



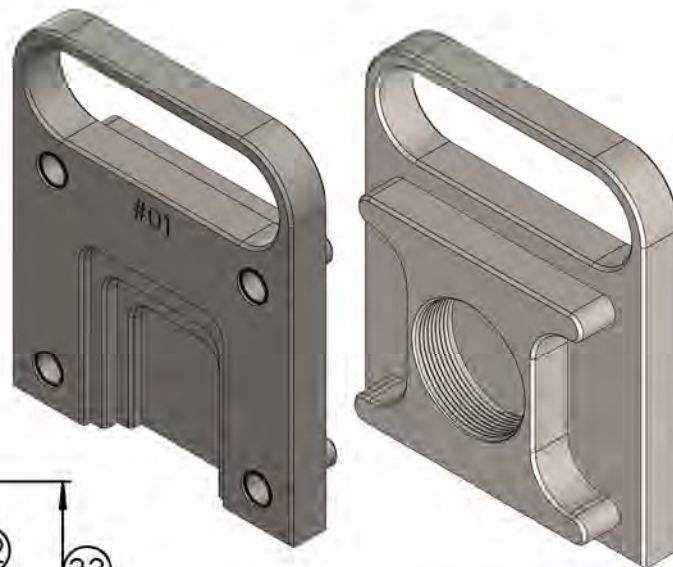
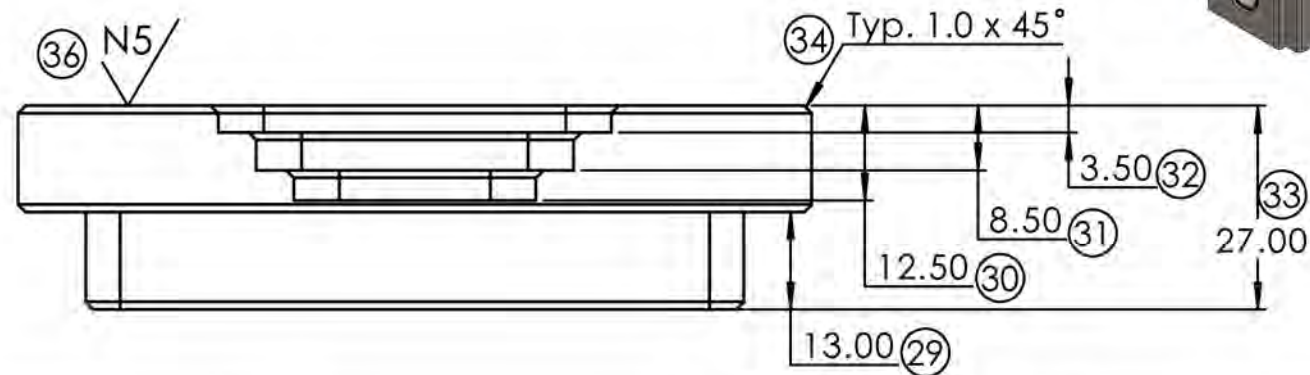
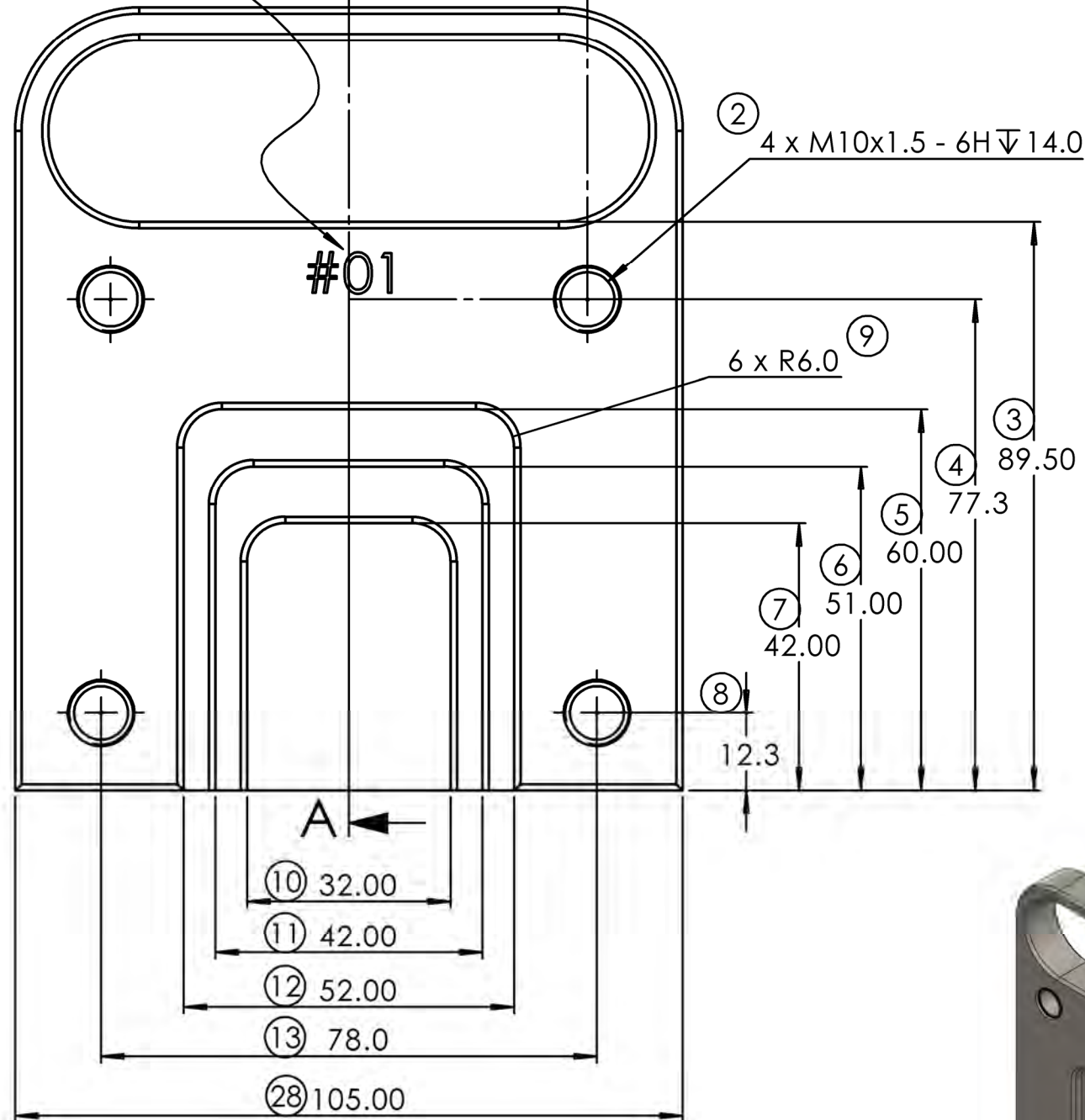
TEST PROJECT / PROJET D'ÉPREUVE

# CNC MACHINING USINAGE CNC

POST-SECONDARY /  
NIVEAU POSTSECONDAIRE

# SECTION A-A

① Engrave Competitor #  
5mm letters,  $\nabla .20$   
approximately centered on tab



**PROPRIETARY AND CONFIDENTIAL**  
THE INFORMATION CONTAINED IN THIS DRAWING IS THE SOLE PROPERTY OF SKILLS CANADA. ANY REPRODUCTION IN PART OR AS A WHOLE WITHOUT THE WRITTEN PERMISSION OF SKILLS CANADA IS PROHIBITED.

UNLESS OTHERWISE SPECIFIED:		NAME	DATE
DIMENSIONS ARE IN MILLIMETERS TOLERANCES:		DRAWN	Marte 05/16/17
ANGULAR: MACH $\pm 0.5\text{deg}$ ONE PLACE DECIMAL $\pm 0.100$ TWO PLACE DECIMAL $\pm 0.025$		CHECKED	
INTERPRET GEOMETRIC TOLERANCING PER:		ENG APPR.	
MATERIAL	1020	MFG APPR.	
FINISH	N7	Q.A.	
DO NOT SCALE DRAWING		COMMENTS:	
		Break all edges	
		Blank Size:	
		31.75 x 107.95 x 127.0	



SIZE	DWG. NO.	REV
<b>B</b>	Mill Part Skills Canada 2017	
SCALE: 1:1	WEIGHT:	SHEET 1 OF 1

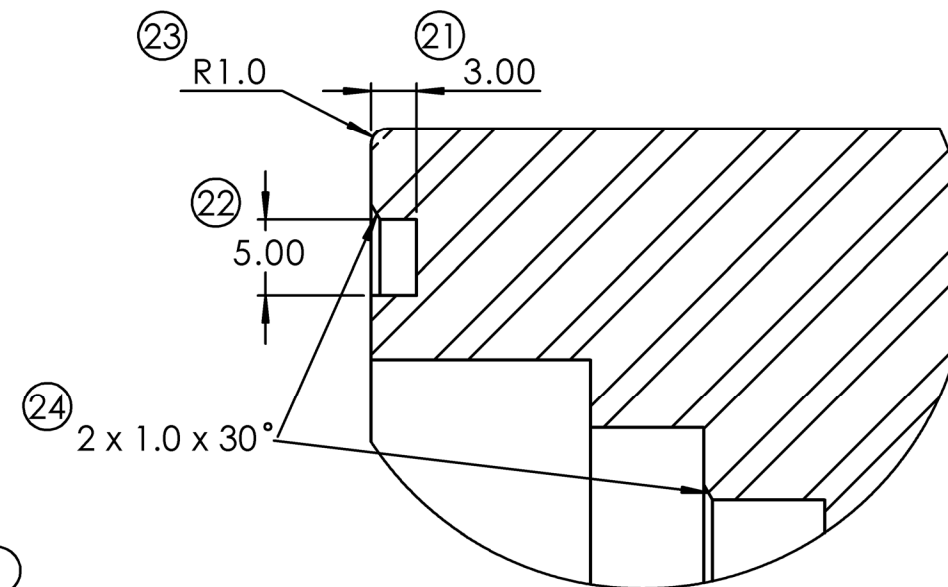
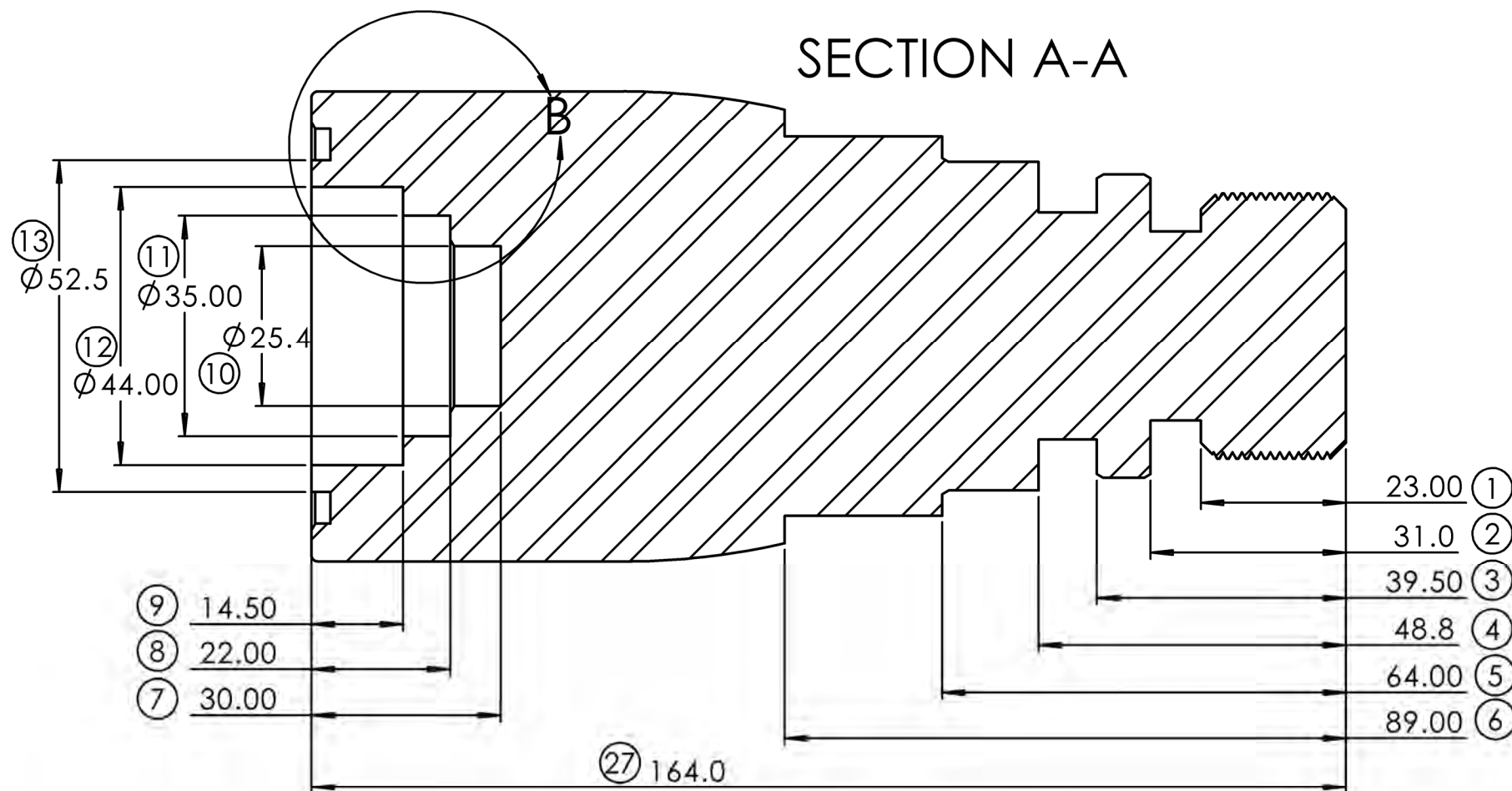
4

3

2

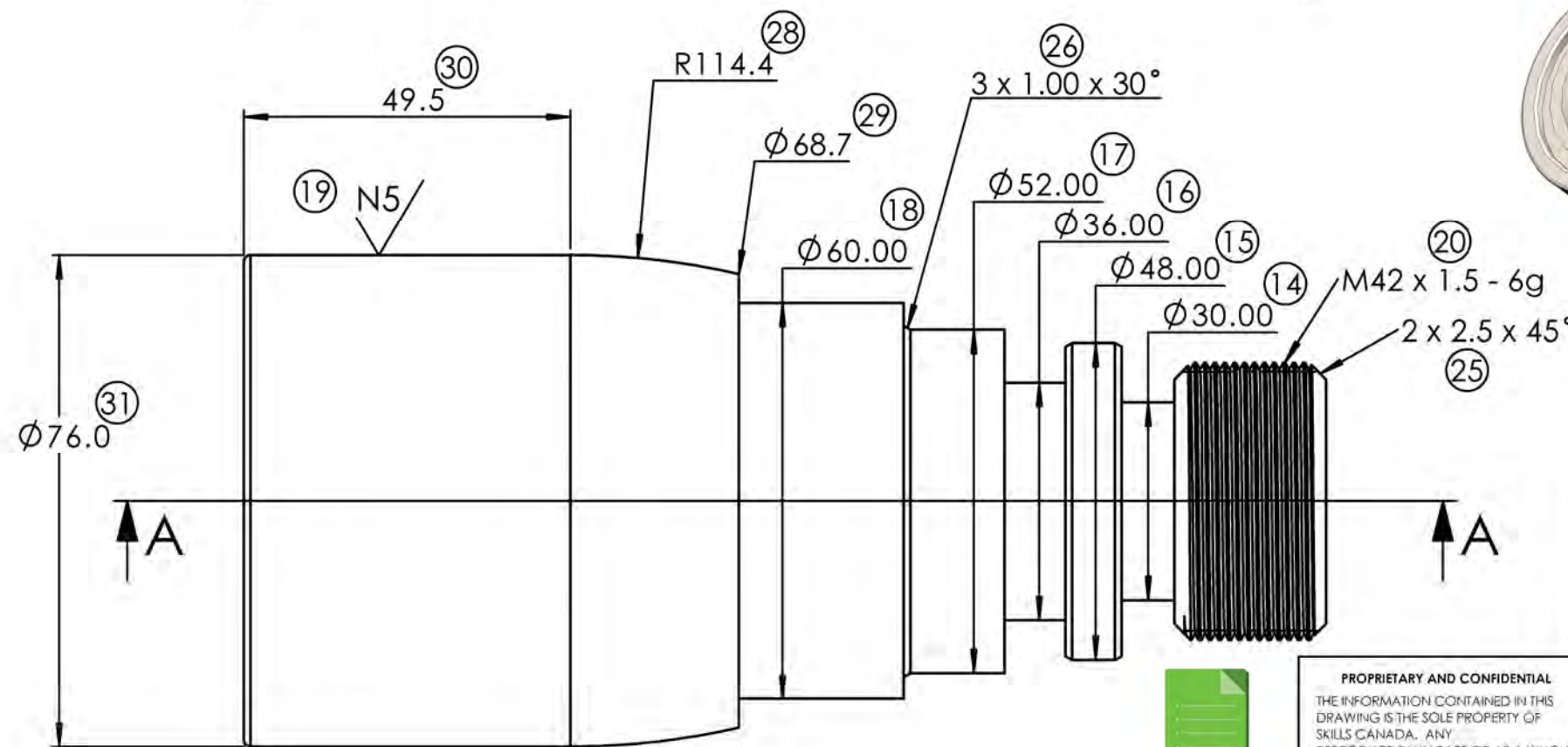
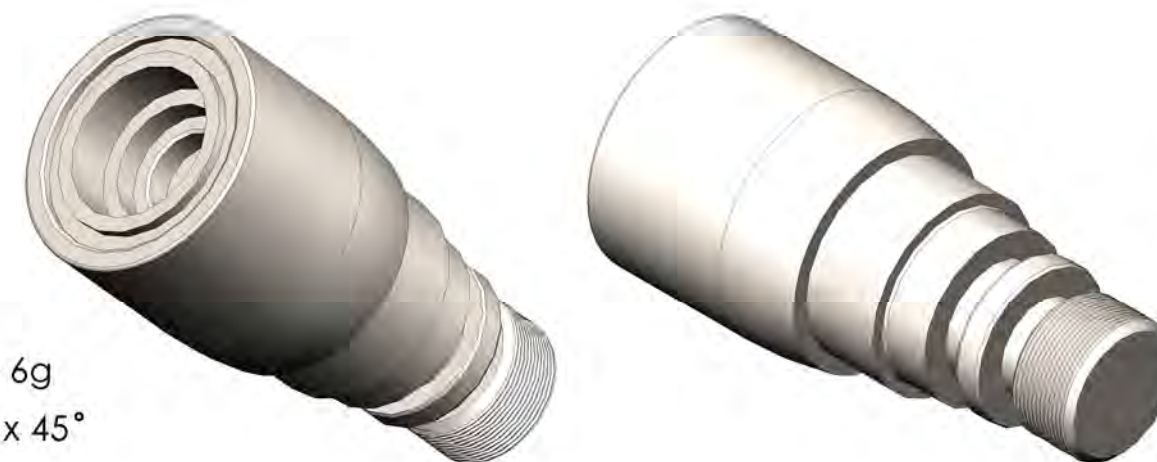
1

### SECTION A-A



### DETAIL B

SCALE 2 : 1



**PROPRIETARY AND CONFIDENTIAL**  
 THE INFORMATION CONTAINED IN THIS DRAWING IS THE SOLE PROPERTY OF SKILLS CANADA. ANY REPRODUCTION IN PART OR AS A WHOLE WITHOUT THE WRITTEN PERMISSION OF SKILLS CANADA IS PROHIBITED.

DOCUMENT USE

UNLESS OTHERWISE SPECIFIED:		NAME	DATE
DIMENSIONS ARE IN MILLIMETERS		DRAWN	Marte 05/17/17
TOLERANCES:		CHECKED	
ANGULAR: MACH ± 0.5deg		ENG APPR.	
ONE PLACE DECIMAL ± 0.100		MFG APPR.	
TWO PLACE DECIMAL ± 0.025		Q.A.	
INTERPRET GEOMETRIC TOLERANCING PER:		COMMENTS:	
MATERIAL	1020	Break all edges	
FINISH	N7	Blank Size:	
DO NOT SCALE DRAWING		165.1 x 76.2	



SIZE	DWG. NO.	REV
<b>B</b>	Lathe Part Skills Canada 2017	
SCALE: 1:1	WEIGHT:	SHEET 1 OF 1

4

3

2

1

B

B

A

A