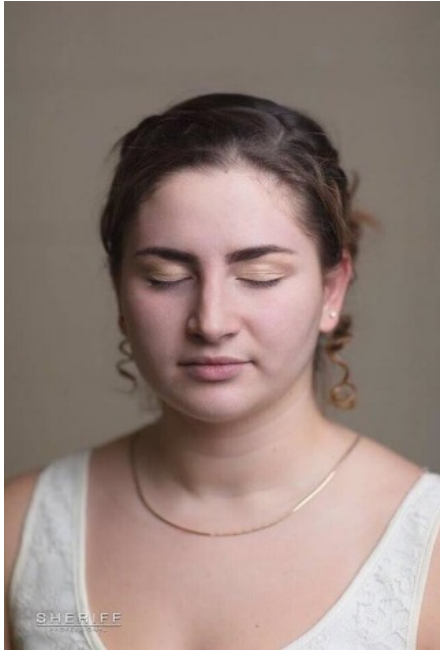




MAKEUP DESIGN TEST PROJECT / ÉPREUVE DE MAQUILLAGE

AESTHETICS ESTHÉTIQUE

POST-SECONDARY /
NIVEAU POSTSECONDAIRE



Step 1. Shape & Sculpt eyebrow.
Using Sheriff's Brows have it all
eyeshadow pallet.

Step 2. Prime the eye with prime time eye & lip primer
Cover the whole eyelid up to brow bone.

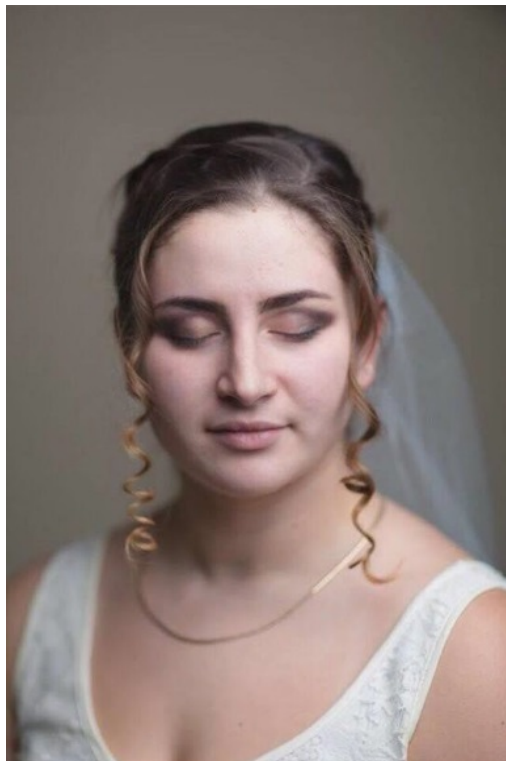


Step 3.

Apply shade 419 Berlin in the crease area. This specific colour helps to define the crease by creating a light shadow.



Step 4. Apply shade 281 Savanna in the outer crease area.



Step 5. Repeat step 4 but with shade 497 Fig creating a V-shape.




Step 6- Apply shade 419 Berlin on the lid to seamlessly harmonize all colours together. Complete your shadow by adding 207 Wisper on the browbone and inner corner of the eye. Go under the eye with shade 497 Fig and white eyeliner on waterline.



Step 7- Complete the eye with gel liner creating a symmetrical wing, full set lashes & black mascara.

****Tip-** Build both eyes as you go**

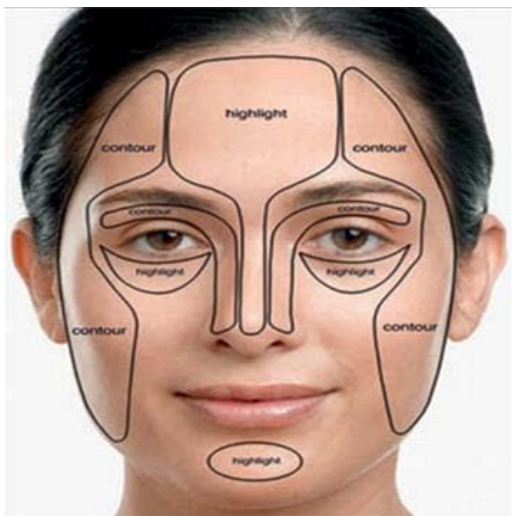
Step 8- Apply face primer all over the face. Use foundation brush in "X" motion.

	<ol style="list-style-type: none"> 1. Start to line the lash line with gel liner 2. From the end of the eye mark a little tick. (Make sure it's even and proportioned to client's eye shape. 3. Extend on the tick. 4. Repeat step 3. Make sure eyes are looking symmetrical and wing is proportioned to clients eye. 5. Clean edge of wing with make-up wipe, concealer or Q-TIP
--	--



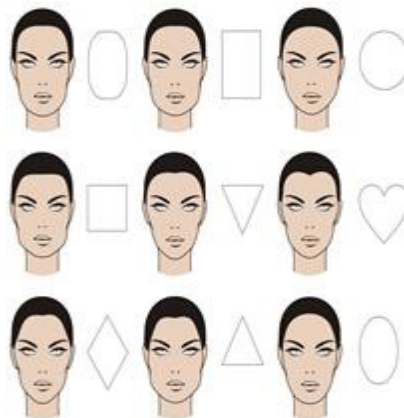
Step 9- Apply Colour Corrector if necessary. Application should be in “X” motion.

Step 10- Apply skin tone colour concealer throughout face. “X” motion followed by HD foundation.




Step 11- Contour/Sculpt the face with six-well concealer pallet. Blend contour out with fingers or kabuki flat brush. Highlight using eye & lip primer.

Faces Shapes




Distinguishing the face shape you're working with will help with product placement of contour and highlight.



Step 12: Apply 300 Cheeky blush. For a more natural look apply in triangular motion.

Step 13: Apply Translucent powder to set face products and remove shine.



Step 14: Apply Sheriff's eye and lip primer on lips. Go over the lip with Naked lipliner and finish off with Luscious lipstick.

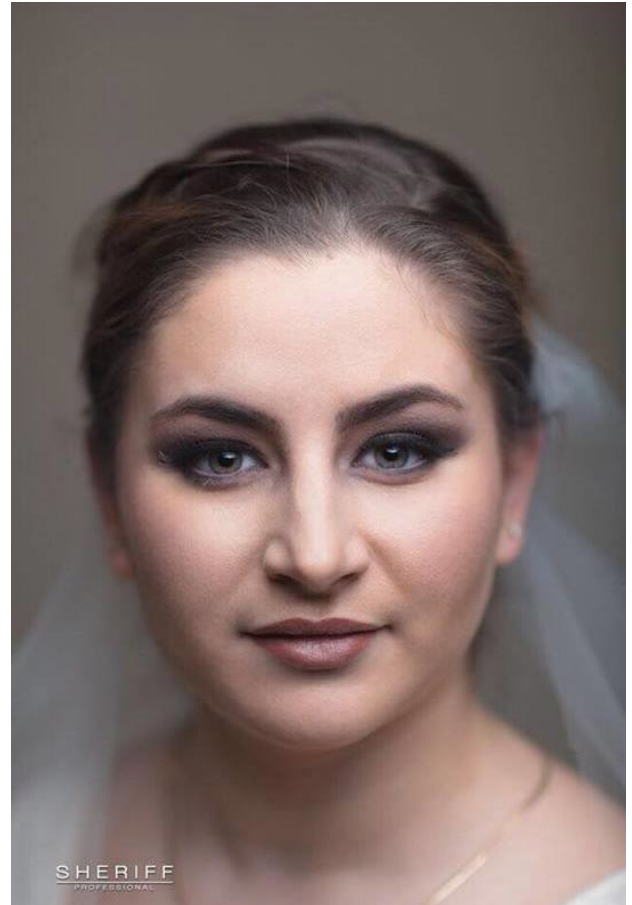
*Ta-da -
We have a
beautiful
bride!*



BEFORE



AFTER



Full Skills Kit includes:

- Primetime (eye & lip primer)- \$28.00
- Eyeshadow refill- \$18.99
- Face primer (kit sample size)- \$42.50 (Regular size)
- Foundation (kit sample size)- \$48.00 (Regular Size)
- Concealer pallet-\$48.50
- Brow Pallet -\$65.00
- Eyeliner white- \$22.50
- Gel liner -\$28.00
- Blush -\$28.00
- Lip liner -\$20.00
- Lipstick-\$22.00
- Mascara -22.50
- Eyelashes -\$15.00
- Translucent powder- \$40.00

Kit Price: \$319.69

Total savings: \$252.04

Tax Included

Discounted products are sold as whole kit. If you would like to purchase individual products prices are above. Shipping is addition to order placement.

www.sheriffcosmetics.com

