



2018

SCNC

SKILLS CANADA
NATIONAL COMPETITION

OCMT

OLYMPIADES CANADIENNES
DES MÉTIERS ET
DES TECHNOLOGIES


skillsCompétences
Canada
Edmonton2018

TEST PROJECT / PROJET D'ÉPREUVE

CARPENTRY CHARPENTERIE

SECONDARY /
NIVEAUX SECONDAIRE





General Notes
FOR EDUCATIONAL
PURPOSE ONLY

CONTENTS
 A1 - ISOMETRIC
 A2- PLANS
 A3- PLANS
 A4- ELEVATIONS
 A5- ELEVATIONS
 A6- SECTIONS
 A7- DETAILS
 A8- DETAILS
 A9- DETAILS
 A10- DETAILS

11	REVISIONS	SEPT,12
...
2	REVISIONS	SEP,08
1	DRAFT	AUG,15
No.	Revision/Issue	Date

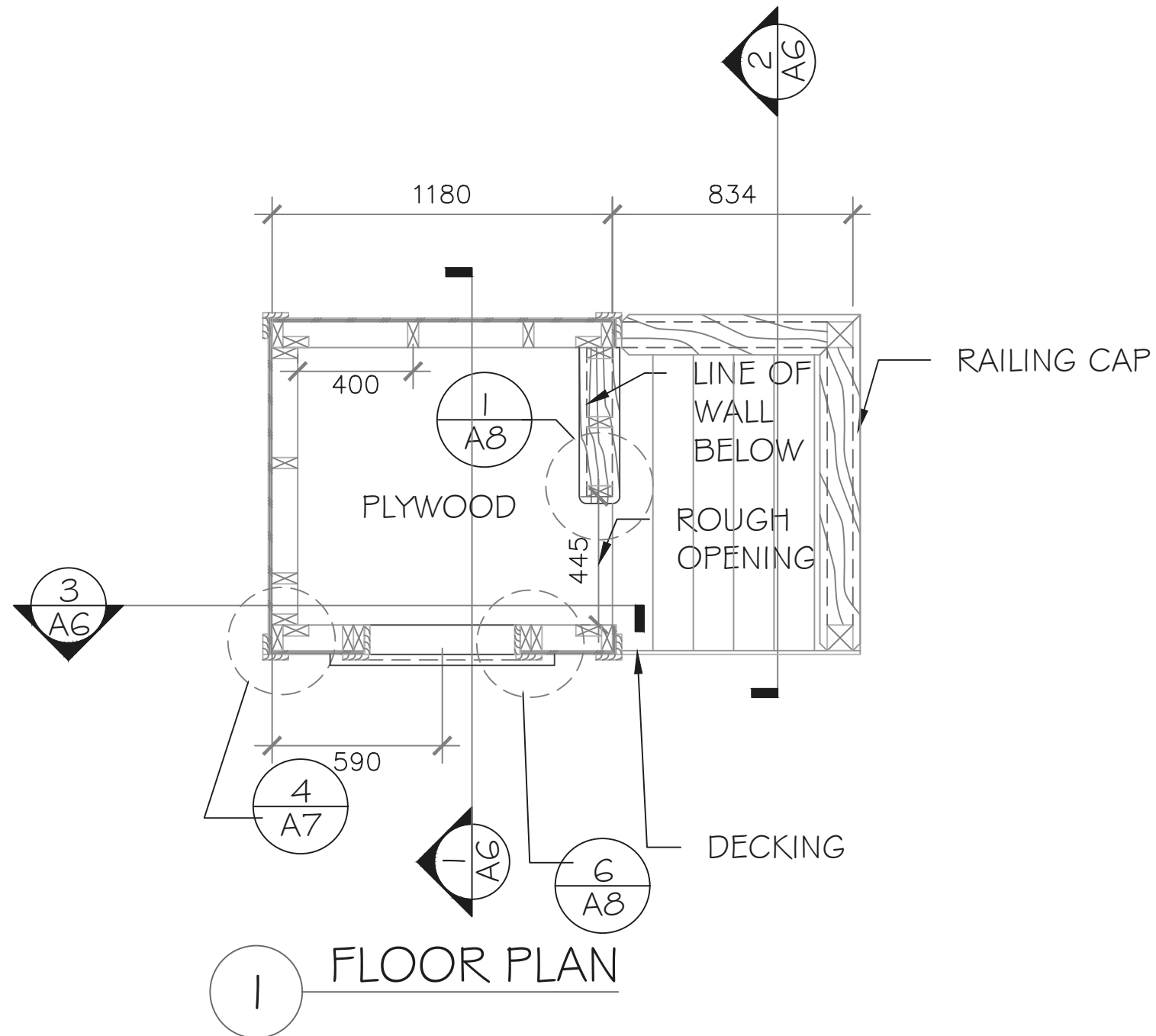
SKILLS
CANADA

NATIONAL
CARPENTRY
SECONDARY

ISOMETRIC

DRAWN BY: I. DU PLESSIS	SHEET #
DATE: 09/12/2017	A1
SCALE: not to scale	





General Notes
 FOR EDUCATIONAL PURPOSE ONLY
 1) All sheathing stock to be verified on site
 2) Finish/ soften all exposed edges
 3) All framing at 400 o/c
 4) All dimensions to framing
 5) All fastening for this project to be as per the National Building Code

No.	Revision/Issue	Date
11	REVISIONS	SEPT,12
...
3	REVISIONS	OCT,14
2	REVISIONS	SEP,08
1	DRAFT	AUG,15

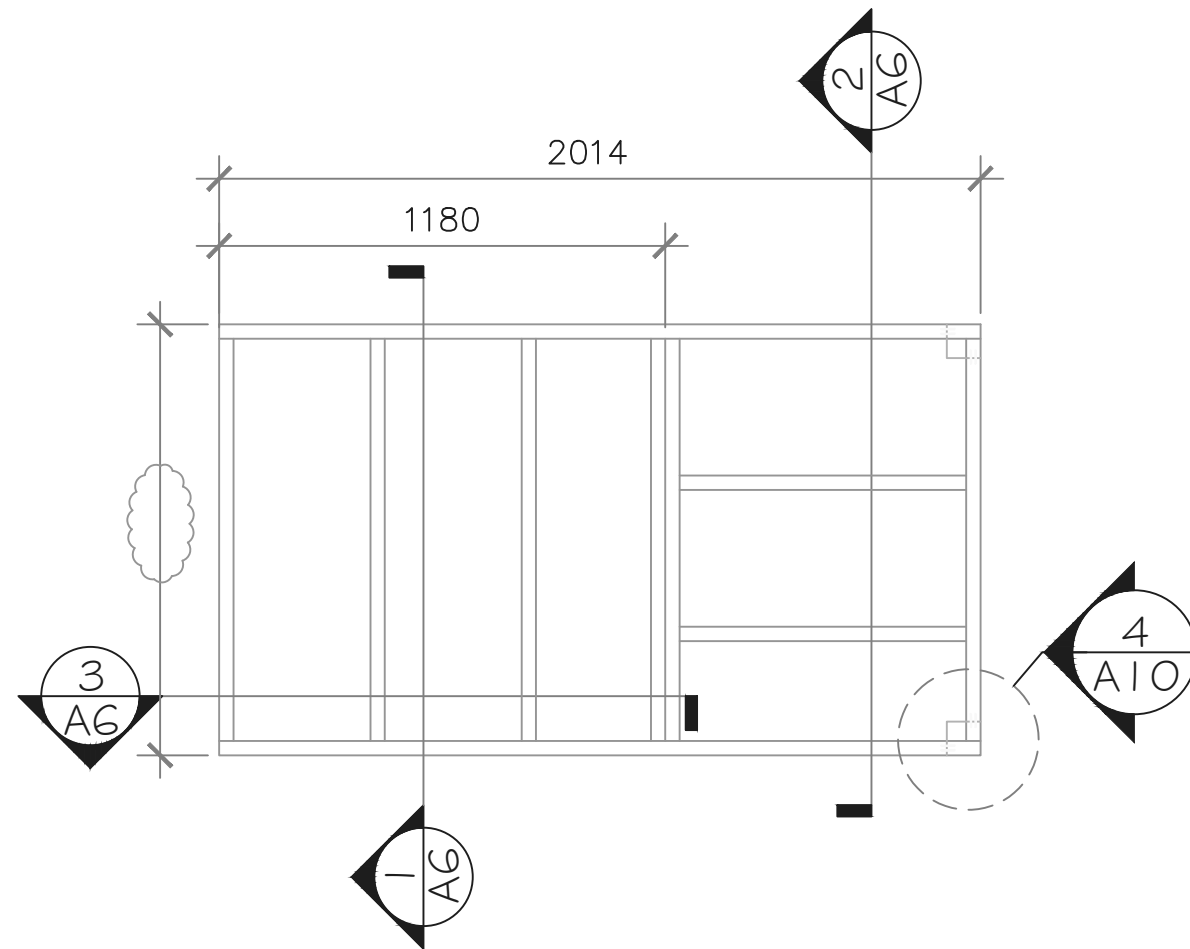
**SKILLS
CANADA**

NATIONAL
CARPENTRY
SECONDARY

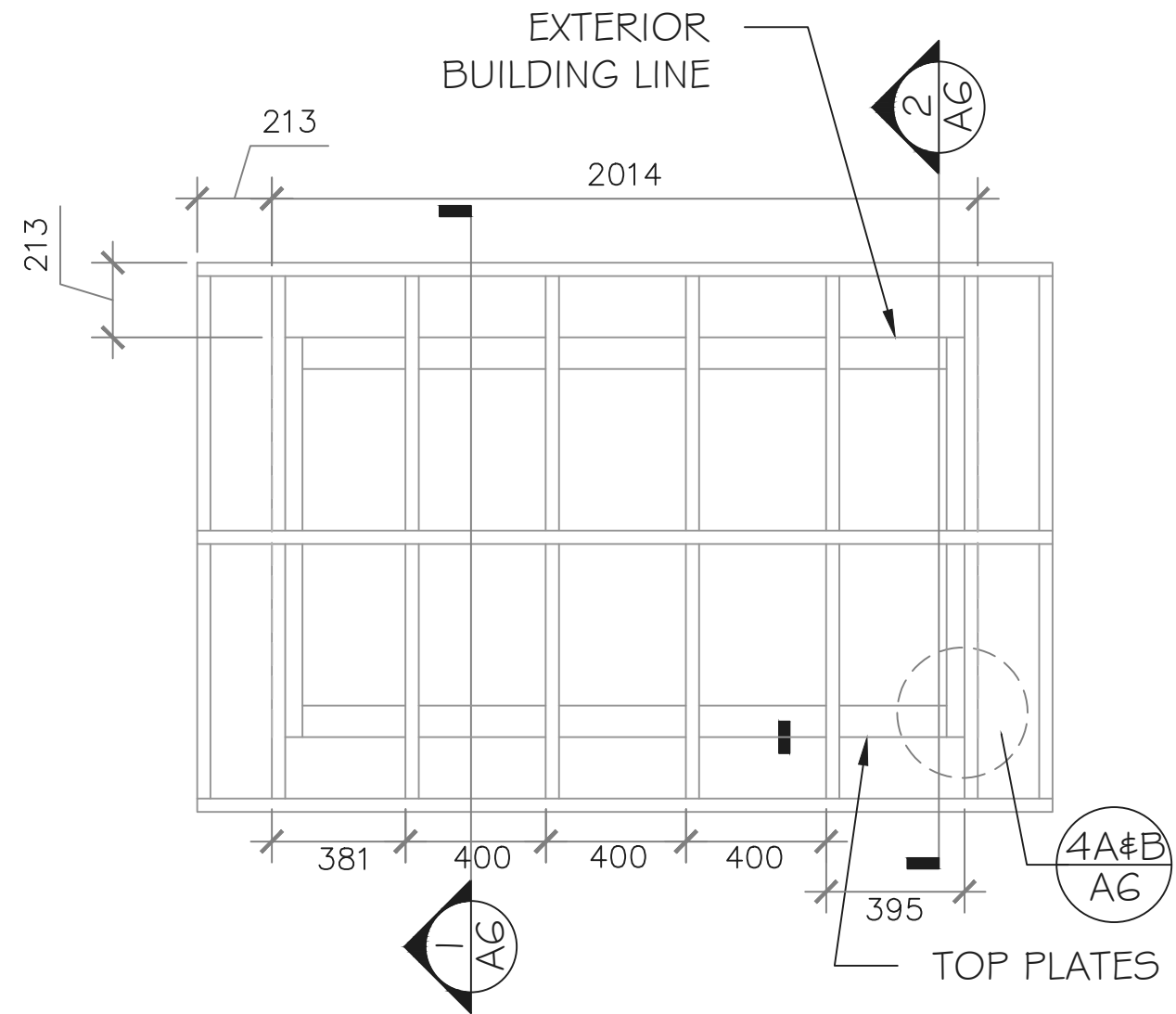
PLANS

DRAWN BY: I. DU PLESSIS DATE: 09/12/2017 SCALE: EP.08	SHEET # A2
--	----------------------





2 FLOOR JOIST PLAN



1 ROOF FRAMING PLAN

General Notes
FOR EDUCATIONAL
PURPOSE ONLY

- 1) START ROOF FRAMING FROM BACK WALL @ 400 o/c
- 2) NO SHEATHING FOR ROOF

No.	Revision/Issue	Date
11	REVISIONS	SEPT,12
...
3	REVISIONS	OCT,14
2	REVISIONS	SEP,08
1	DRAFT	AUG,15

SKILLS
CANADA

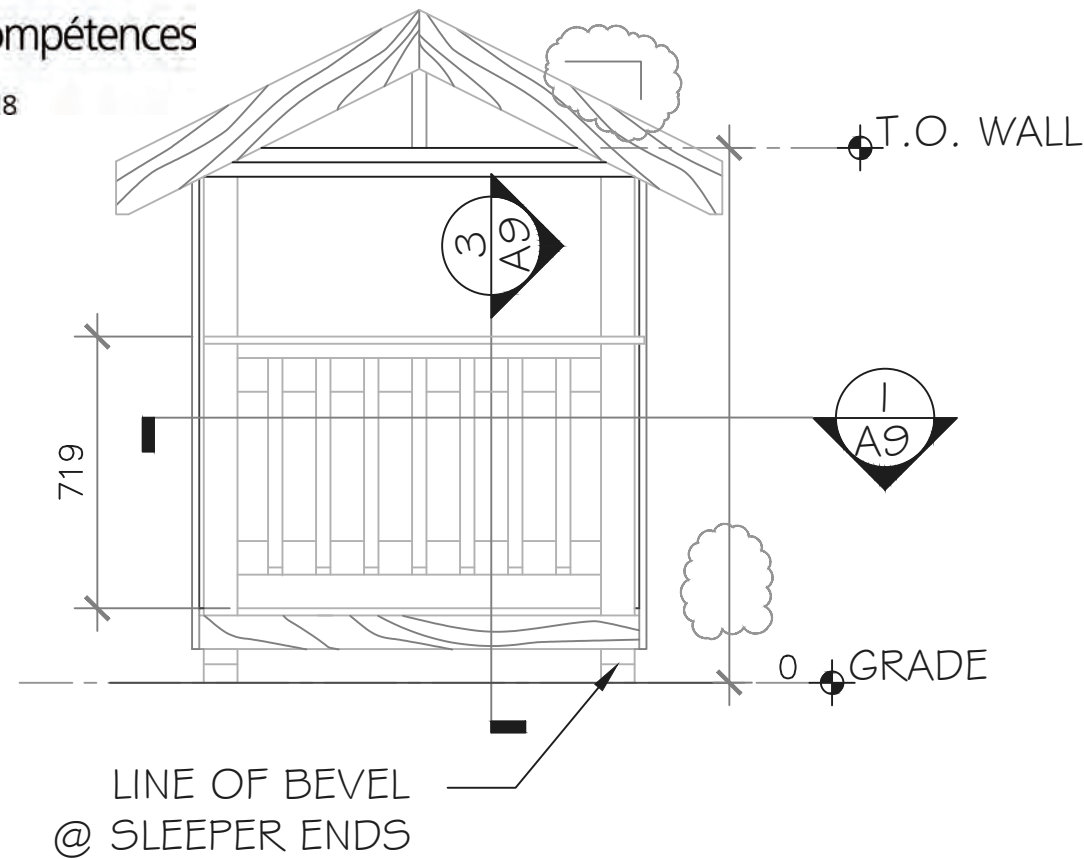
NATIONAL
CARPENTRY
SECONDARY

PLANS

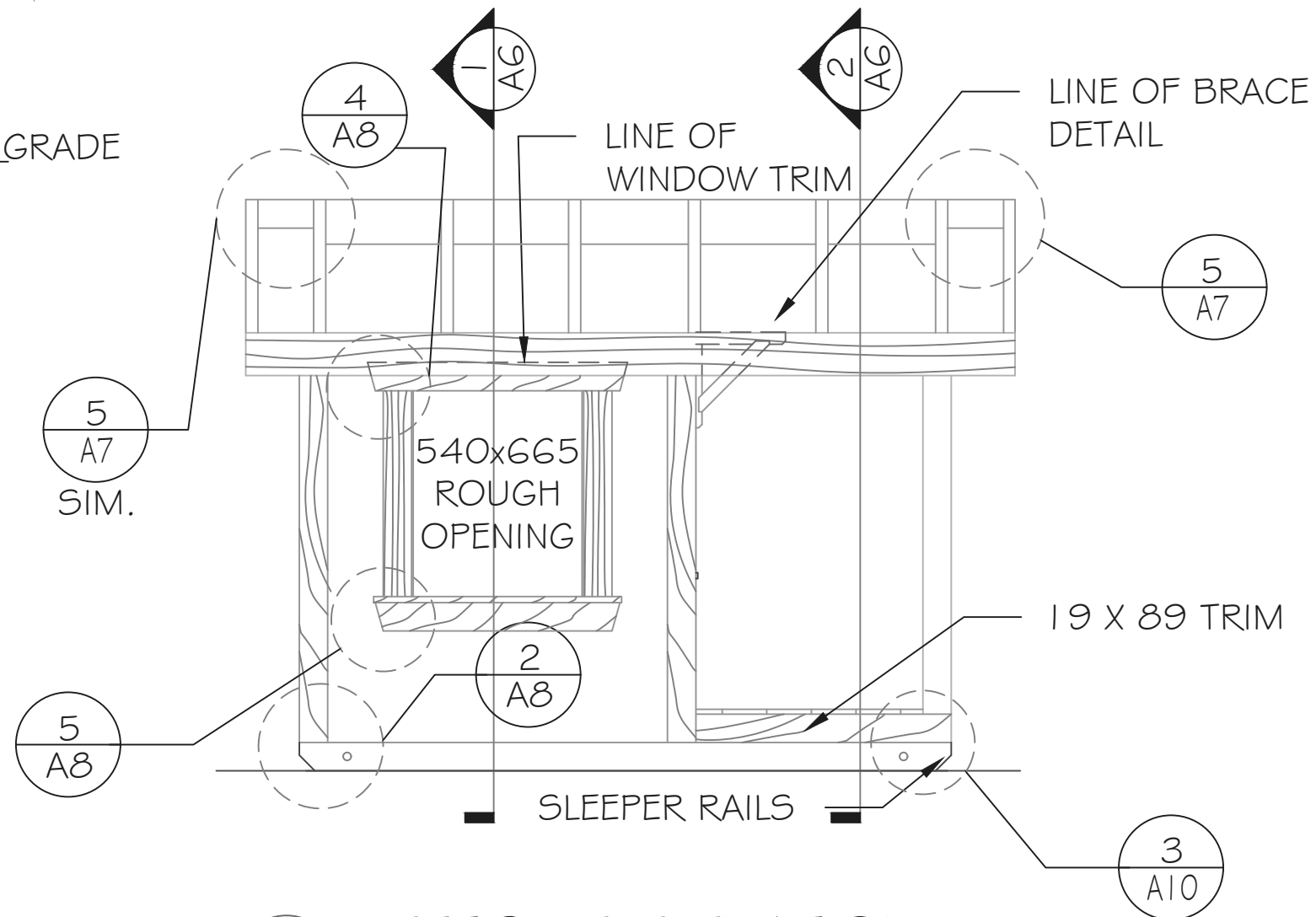
DRAWN BY: I. DU PLESSIS	SHEET #
DATE: 09/12/2017	A3
SCALE: not to scale	



DOCUMENT USE



1 FRONT-ELEVATION



2 LEFT SIDE-ELEVATION

General Notes
 FOR EDUCATIONAL
 PURPOSE ONLY
 1) T.O. = TOP OF
 WALL

No.	Revision/Issue	Date
11	REVISIONS	SEPT,12
...
3	REVISIONS	OCT,14
2	REVISIONS	SEP,08
1	DRAFT	AUG,15

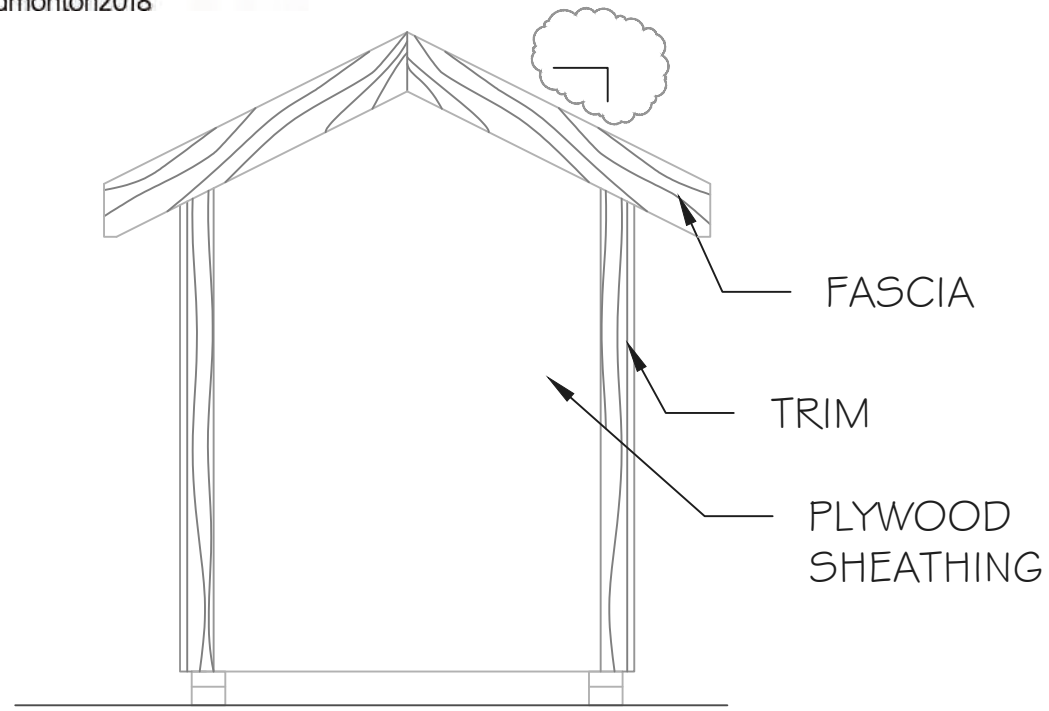
SKILLS
CANADA

NATIONAL
CARPENTRY
SECONDARY

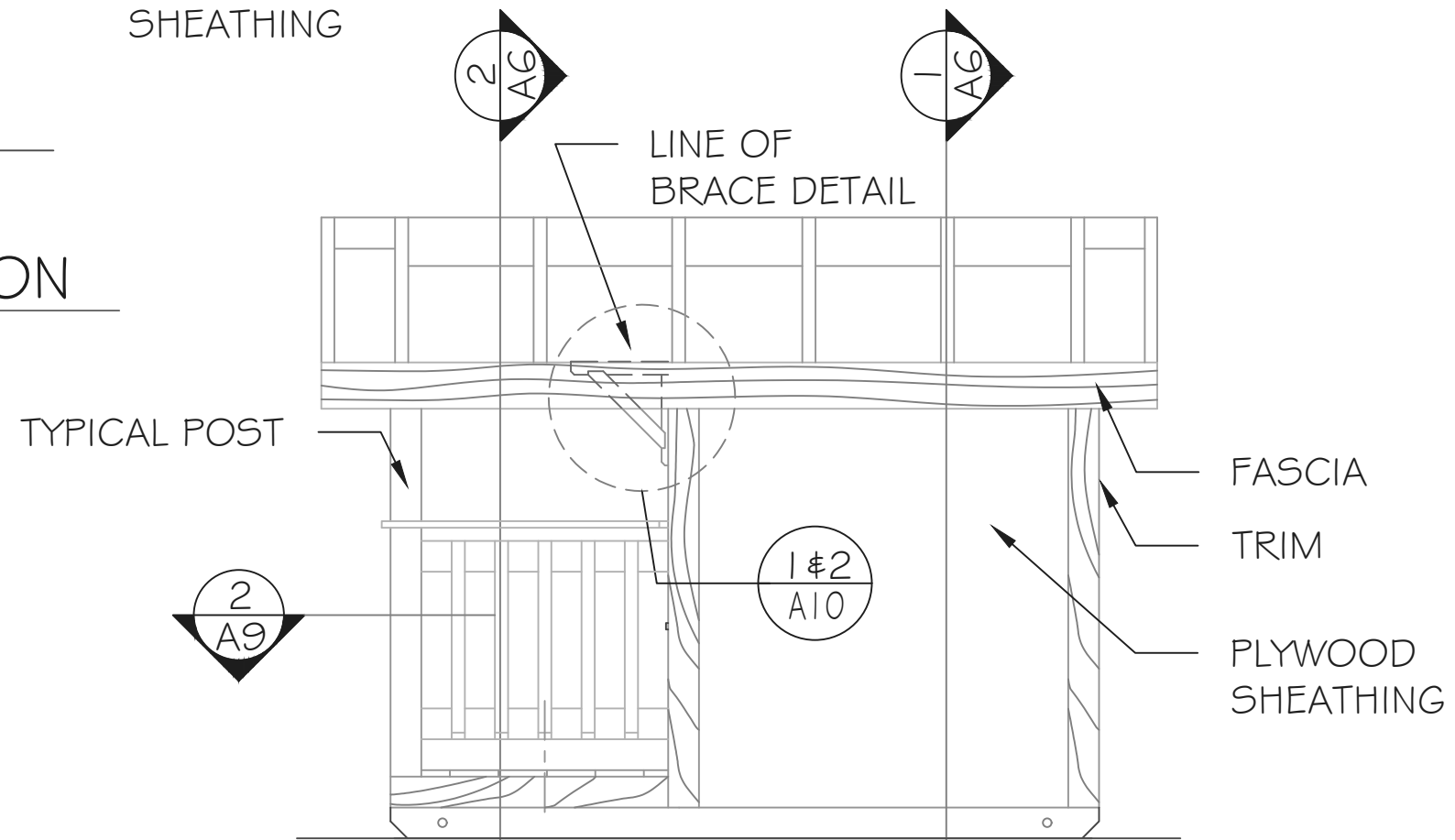
ELEVATIONS

DRAWN BY: I. DU PLESSIS	SHEET #
DATE: 09/12/2017	A4
SCALE: not to scale	





1 REAR-ELEVATION



2 RIGHT SIDE-ELEVATION

General Notes
FOR EDUCATIONAL
PURPOSE ONLY

No.	Revision/Issue	Date
11	REVISIONS	SEPT,12
...
3	REVISIONS	OCT,14
2	REVISIONS	SEP,08
1	DRAFT	AUG,15

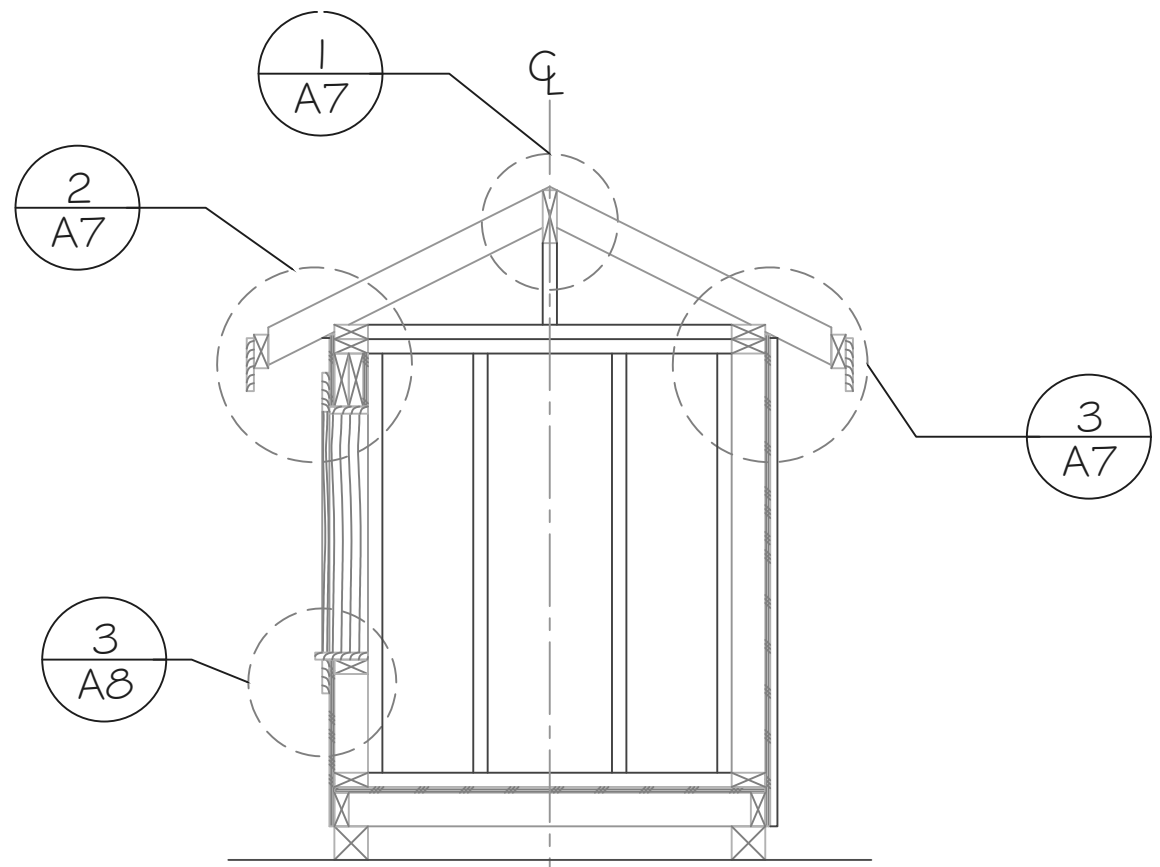
SKILLS
CANADA

NATIONAL
CARPENTRY
SECONDARY

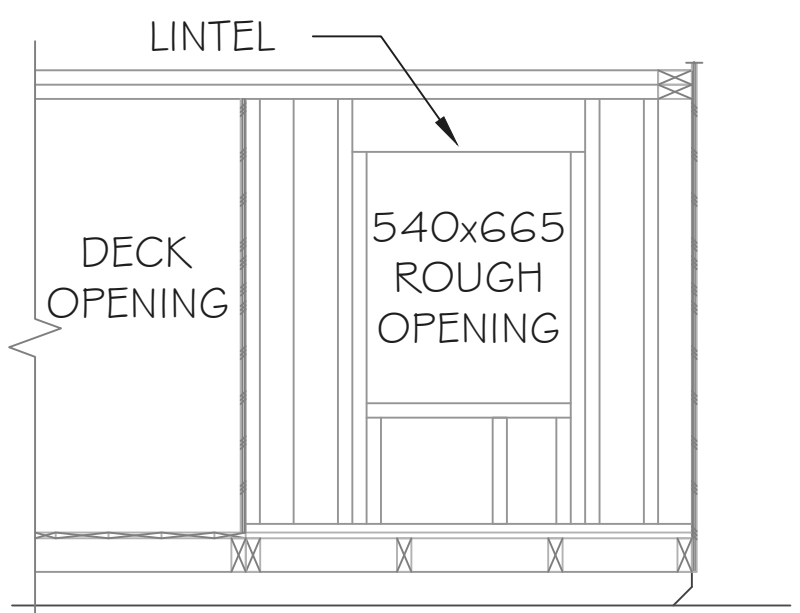
ELEVATIONS

DRAWN BY: I. DU PLESSIS	SHEET #
DATE: 09/12/2017	A5
SCALE: not to scale	

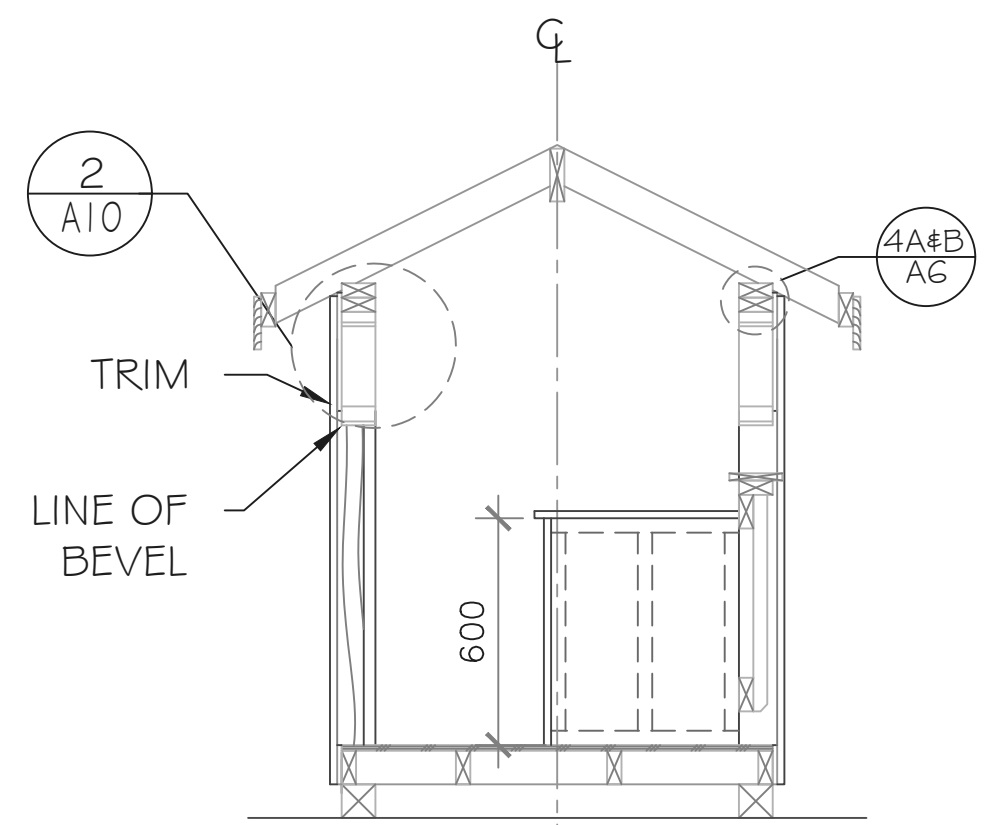




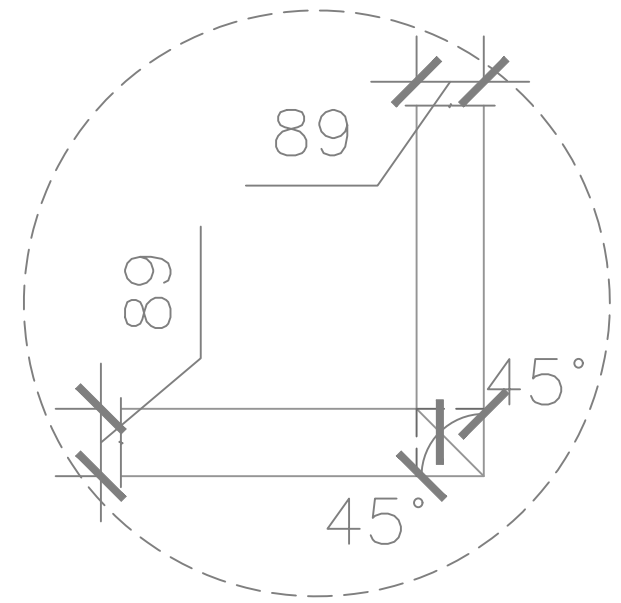
1 SECTION 1
A2, A3, A4, A5



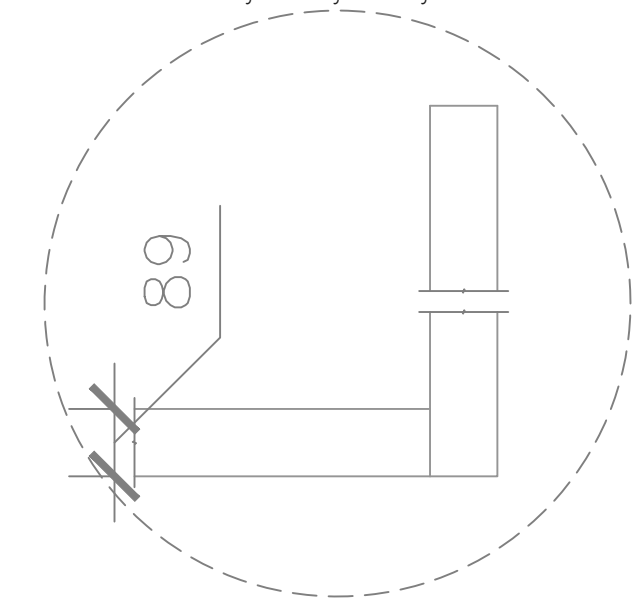
3 SECTION 3
A2, A3



2 SECTION 2
(EXCLUDING BACK WALL)
A2, A3, A4, A5



4A PLAN OF LOWER TOP PLATE
CONNECTION AT POSTS



4B PLAN OF UPPER TOP PLATE
CONNECTION AT POSTS

General Notes
FOR EDUCATIONAL
PURPOSE ONLY



DOCUMENT USE



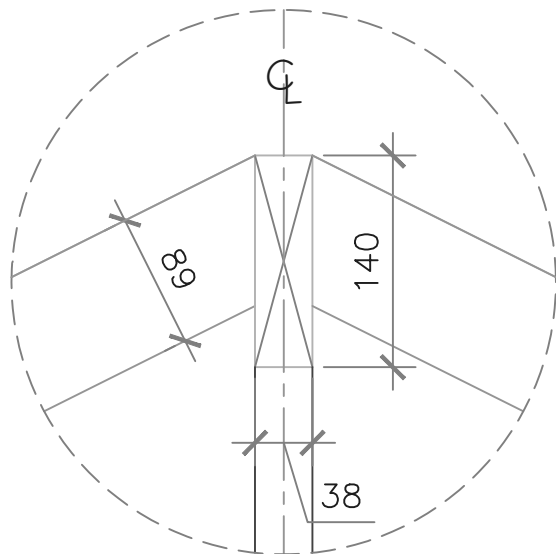
No.	Revision/Issue	Date
11	REVISIONS	SEPT,12
...
3	REVISIONS	OCT,14
2	REVISIONS	SEP,08
1	DRAFT	AUG,15

SKILLS
CANADA

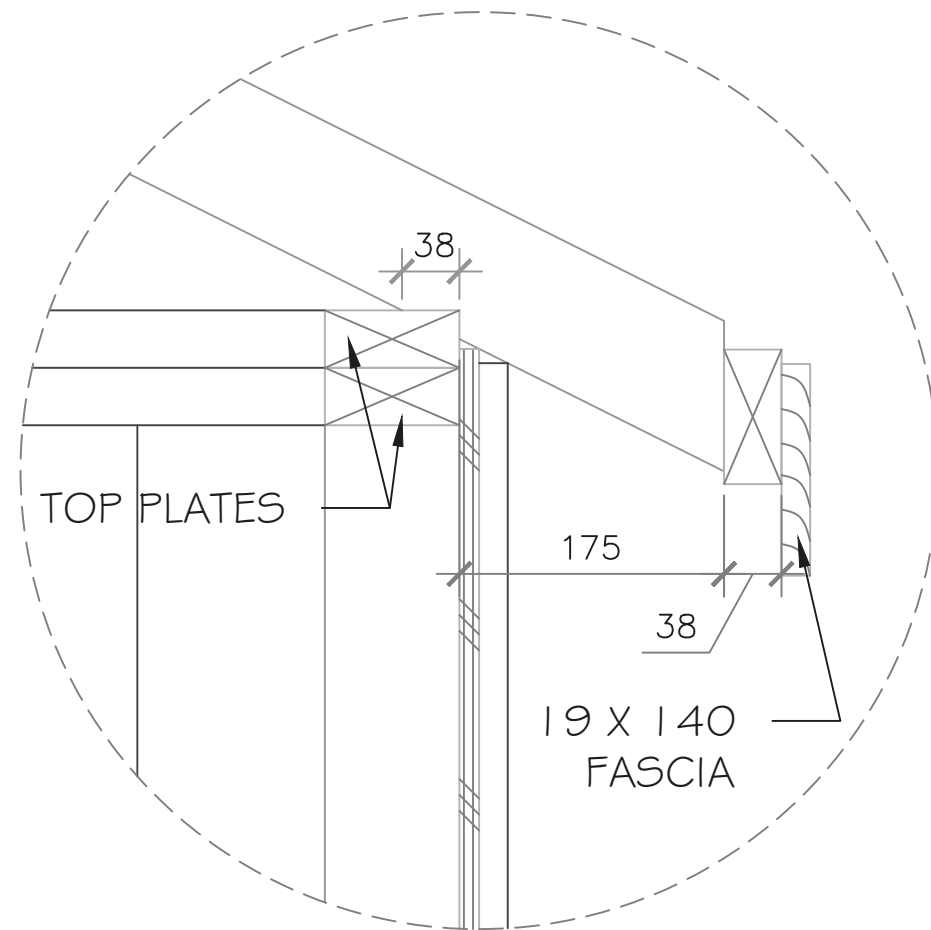
NATIONAL
CARPENTRY
SECONDARY

SECTIONS

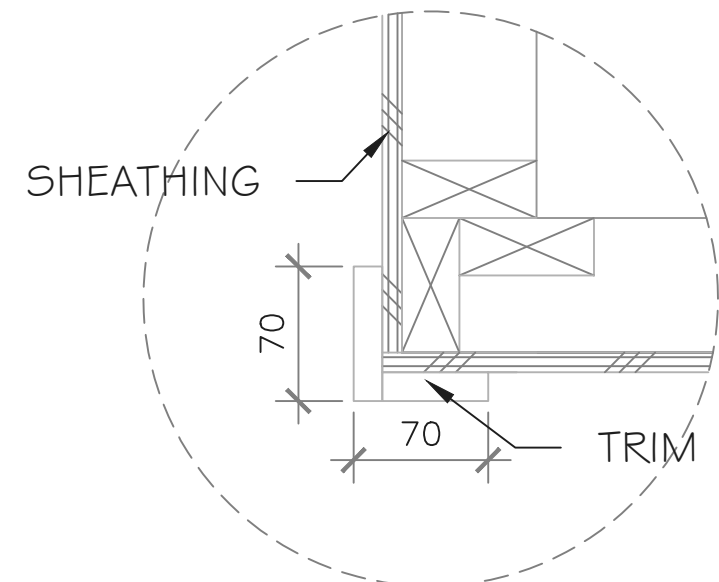
DRAWN BY: I. DU PLESSIS	SHEET #
DATE: 09/12/2017	A6
SCALE: not to scale	



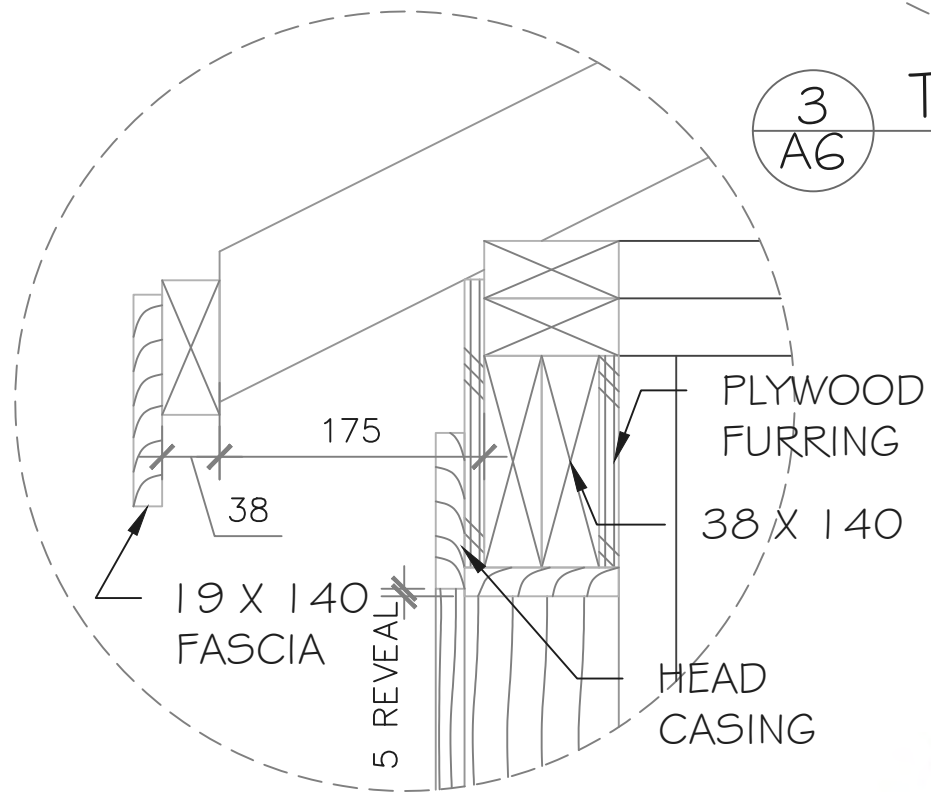
1
AG RIDGE DETAIL



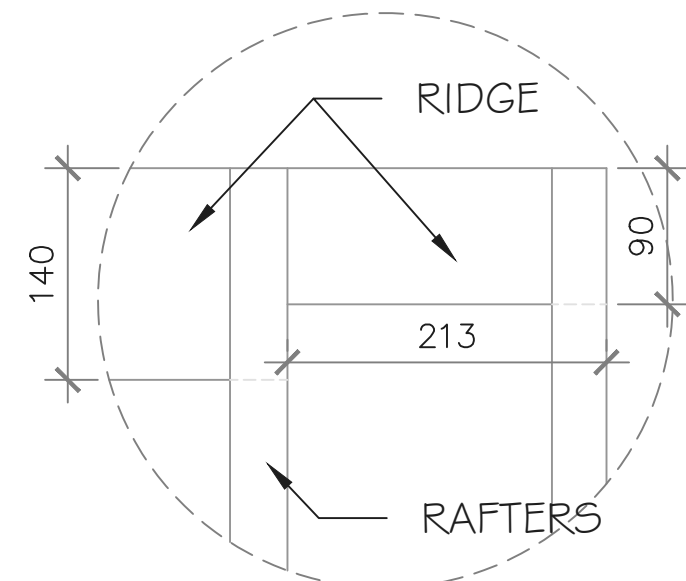
3
AG TYP. EAVE DETAIL



4
A2 TYP. WALL @ CORNER



2
AG EAVE DETAIL @ LINTEL



5
A4 RIDGE DETAIL

General Notes
FOR EDUCATIONAL
PURPOSE ONLY
1) FASCIA CORNERS
TO BE MITRED



No.	Revision/Issue	Date
11	REVISIONS	SEPT,12
...
3	REVISIONS	OCT,14
2	REVISIONS	SEP,08
1	DRAFT	AUG,15

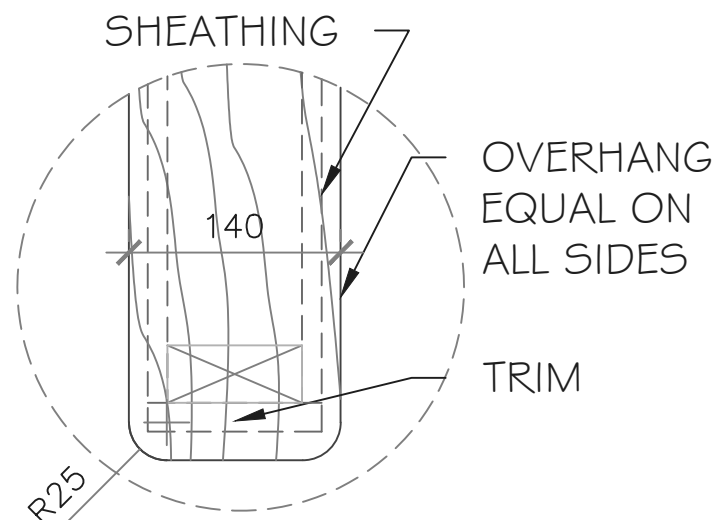
SKILLS
CANADA

NATIONAL
CARPENTRY
SECONDARY

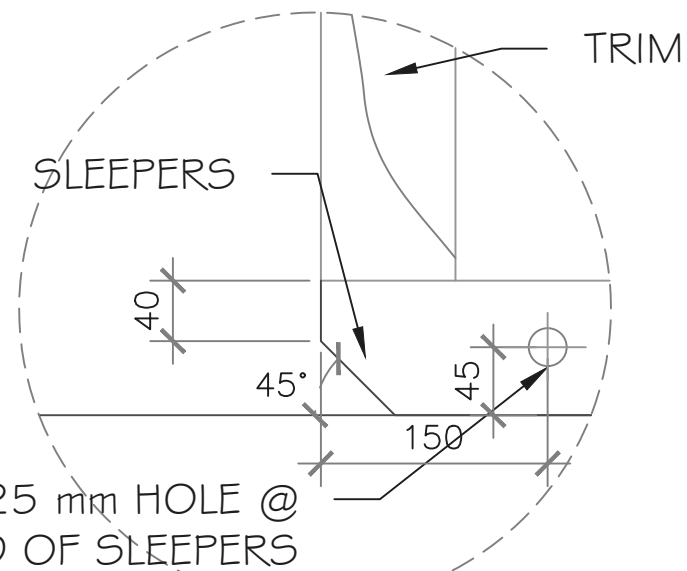
DETAILS

DRAWN BY: I. DU PLESSIS	SHEET #
DATE: 09/12/2017	A7
SCALE: not to scale	

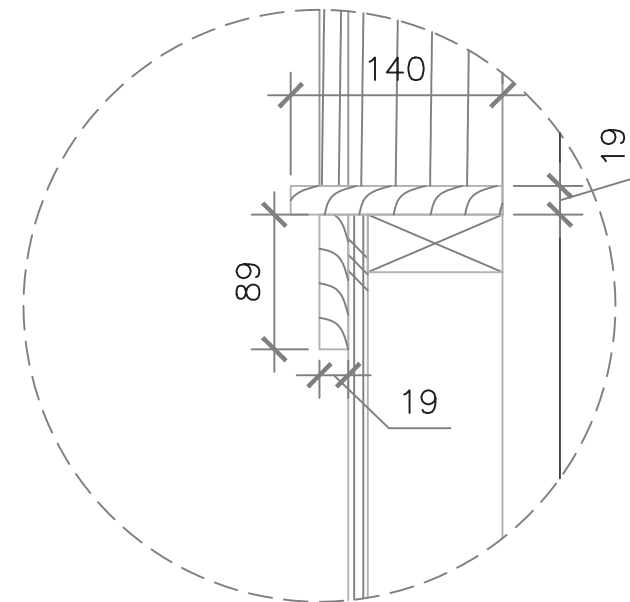




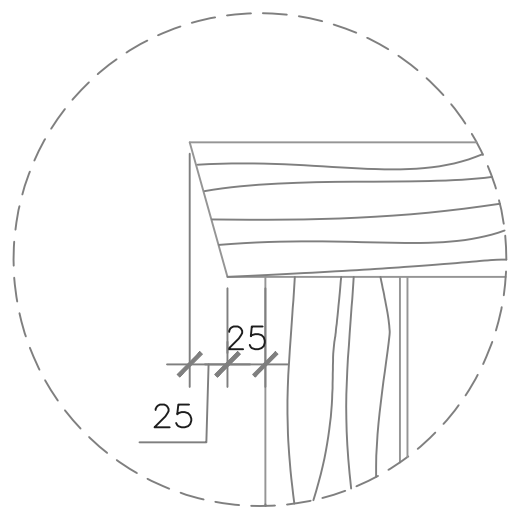
1
A2
WALL CAP DETAIL



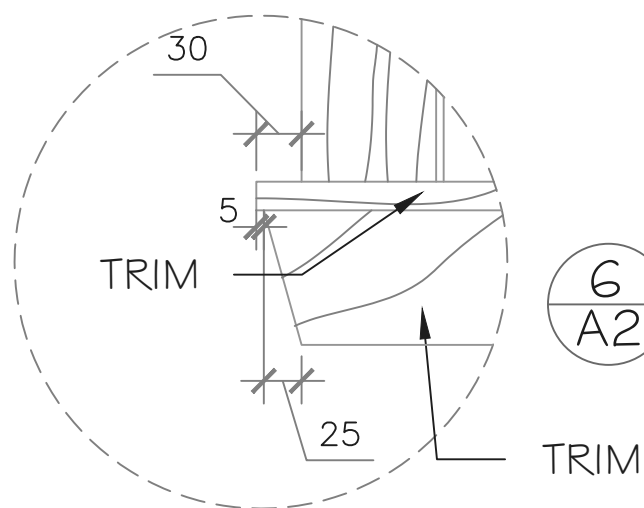
2
A4
SLEEPER ANGLE DETAIL



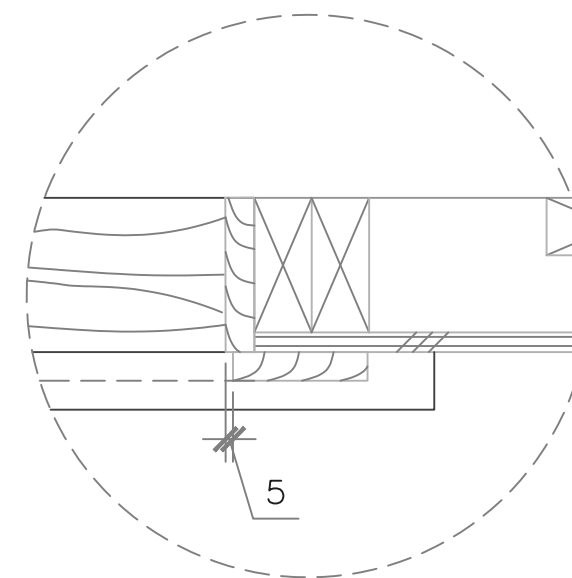
3
A6
WINDOW SILL DETAIL



4
A4
WINDOW HEAD TRIM DETAIL



5
A4
WINDOW SILL TRIM DETAIL



6
A2
WINDOW SILL PLAN DETAIL

General Notes
FOR EDUCATIONAL
PURPOSE ONLY



No.	Revision/Issue	Date
11	REVISIONS	SEPT,12
...
3	REVISIONS	OCT,14
2	REVISIONS	SEP,08
1	DRAFT	AUG,15

SKILLS
CANADA

NATIONAL
CARPENTRY
SECONDARY

DETAILS



DRAWN BY: I. DU PLESSIS	SHEET #
DATE: 09/12/2017	A8
SCALE: not to scale	



General Notes
FOR EDUCATIONAL
PURPOSE ONLY

1) ALL HANDRAIL
MATERIALS ARE
CEDAR



DOCUMENT USE



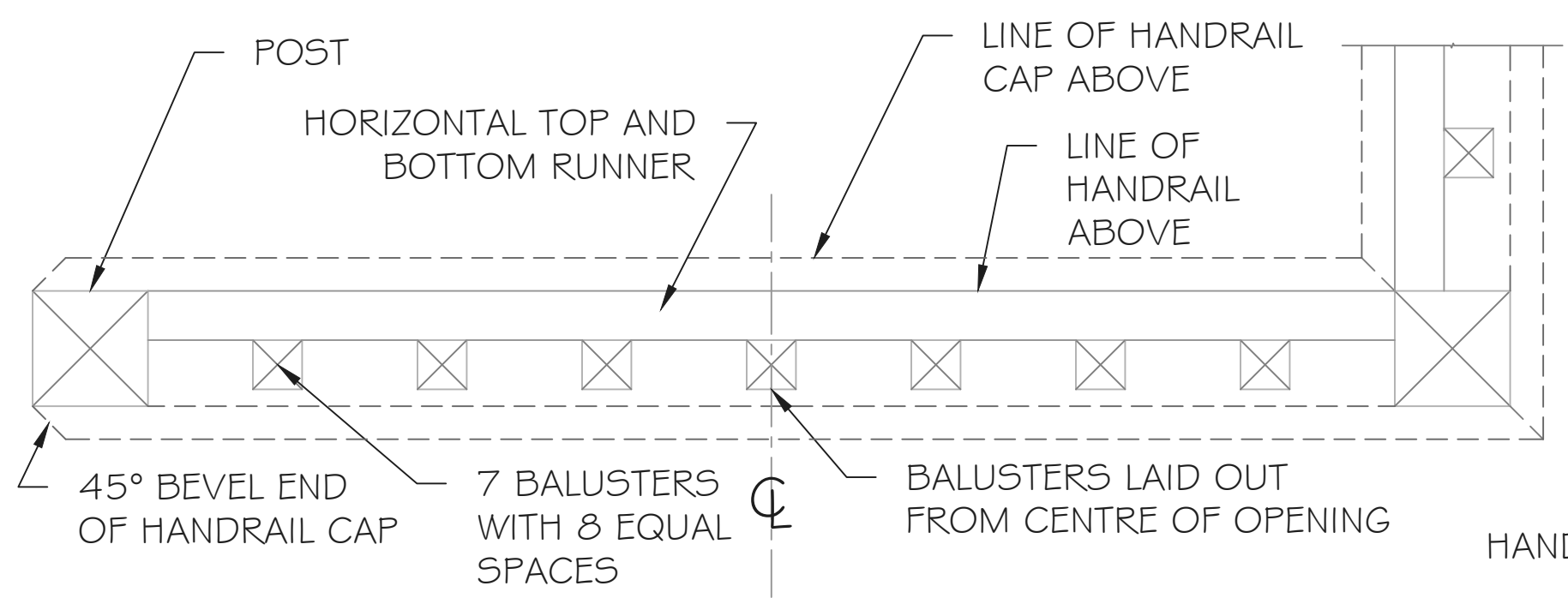
No.	Revision/Issue	Date
11	REVISIONS	SEPT,12
...
3	REVISIONS	OCT,14
2	REVISIONS	SEP,08
1	DRAFT	AUG,15

SKILLS
CANADA

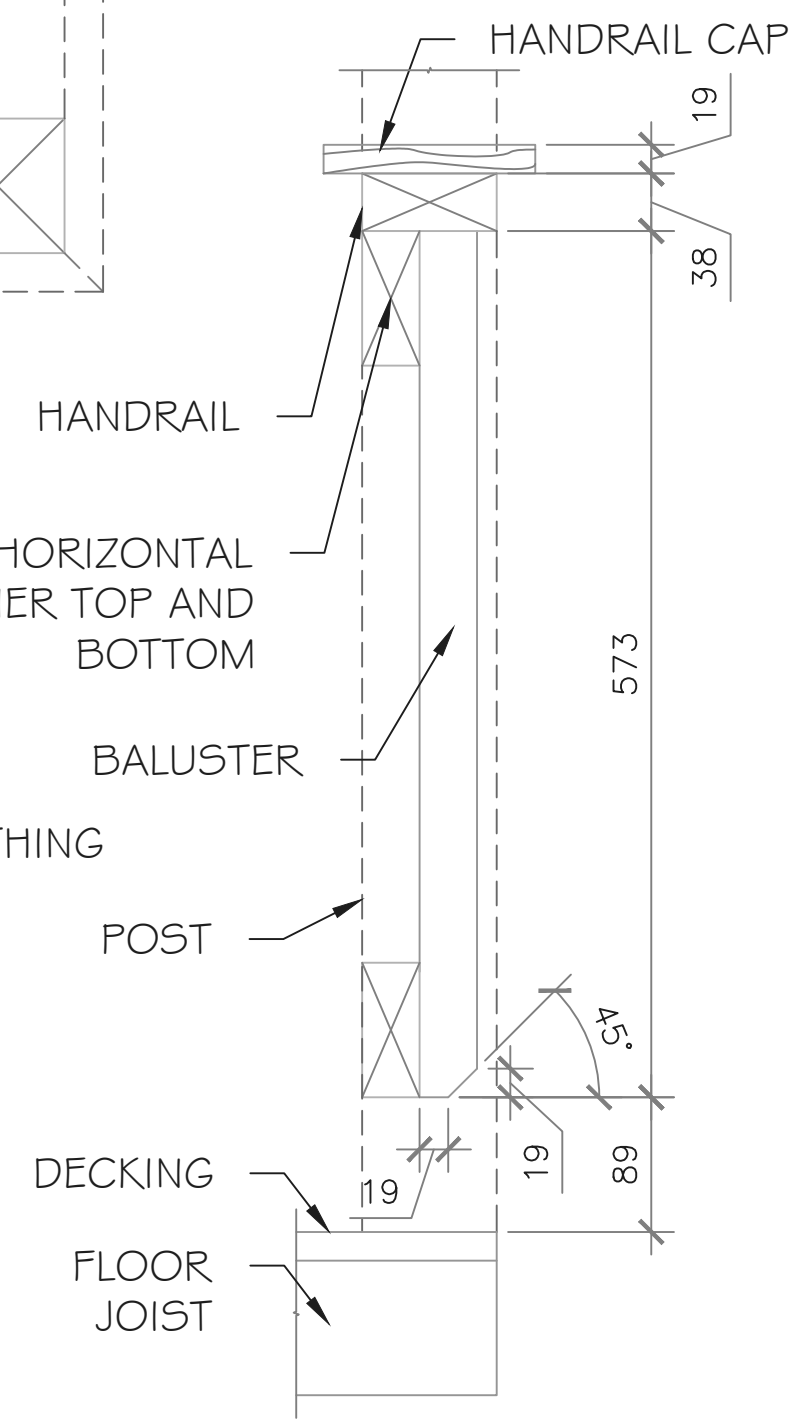
NATIONAL
CARPENTRY
SECONDARY

DETAILS

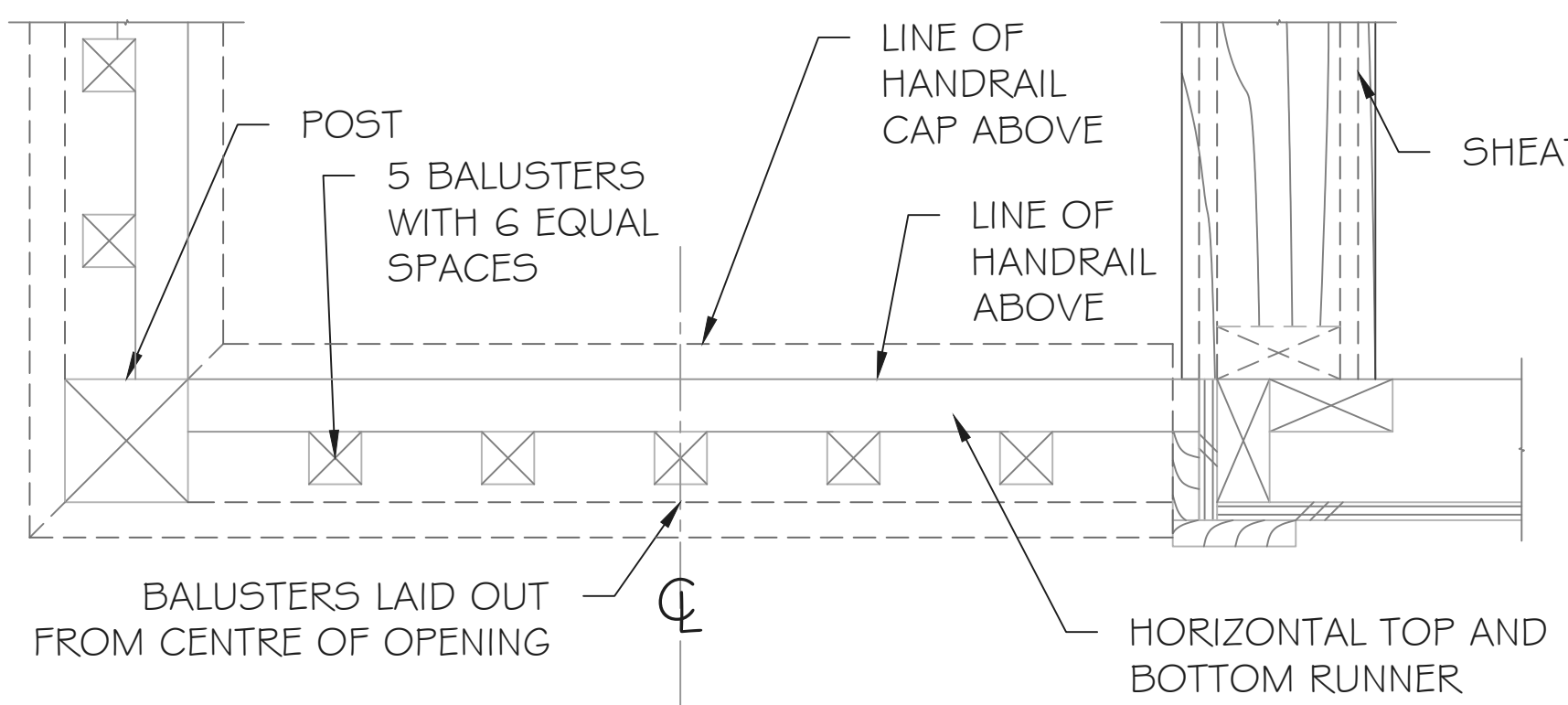
DRAWN BY: I. DU PLESSIS	SHEET #
DATE: 09/12/2017	A9
SCALE: N.T.S.	



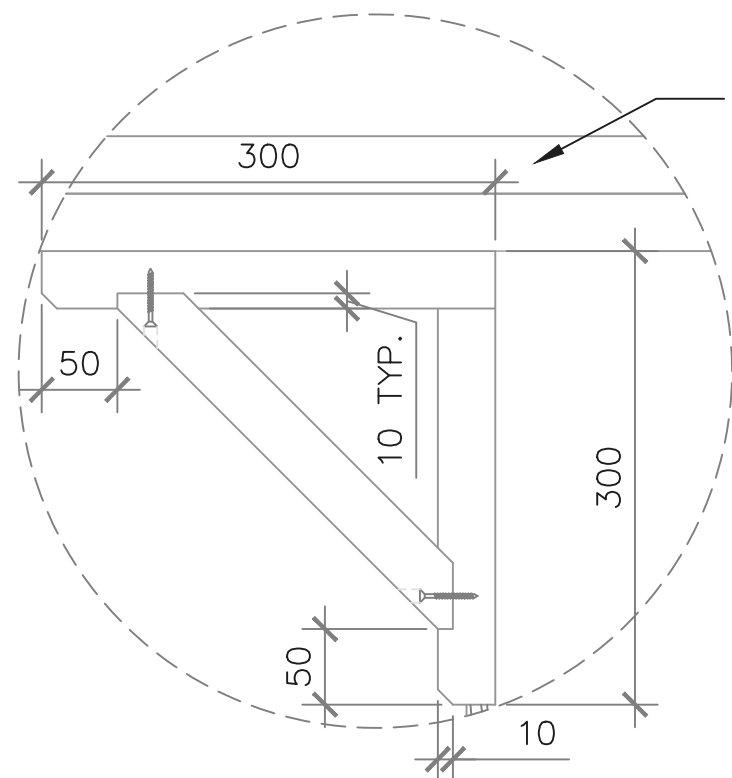
1 FRONT RAILING PLAN
A4



3 BALUSTER SECTION
A4



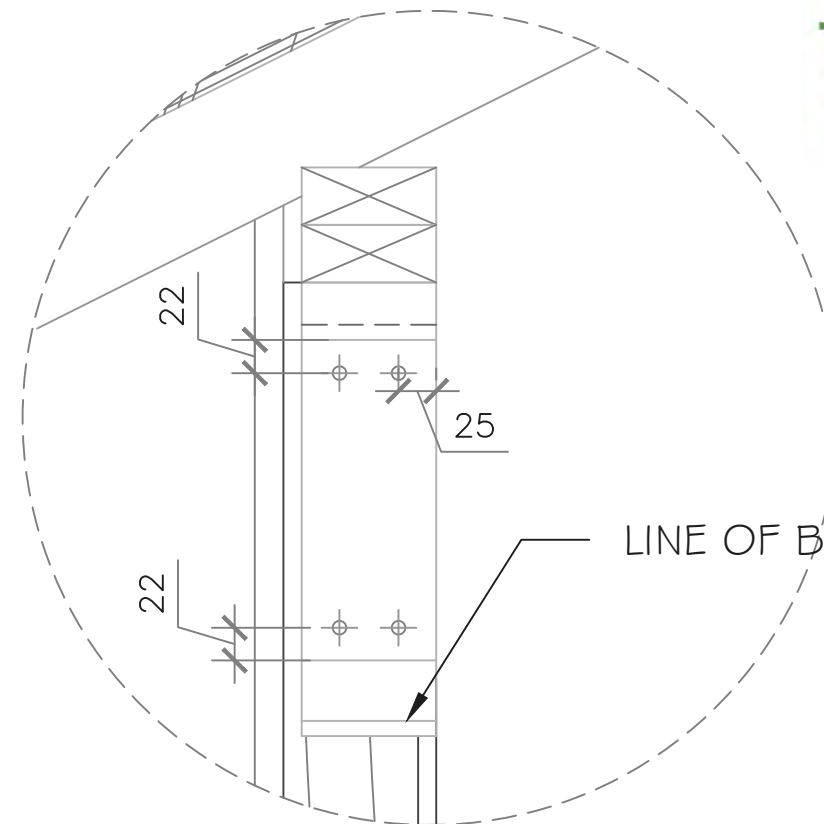
2 SIDE RAILING PLAN
A5



TOP PLATES TO EXTEND BEYOND WALL BEARING ON POST

1
A5

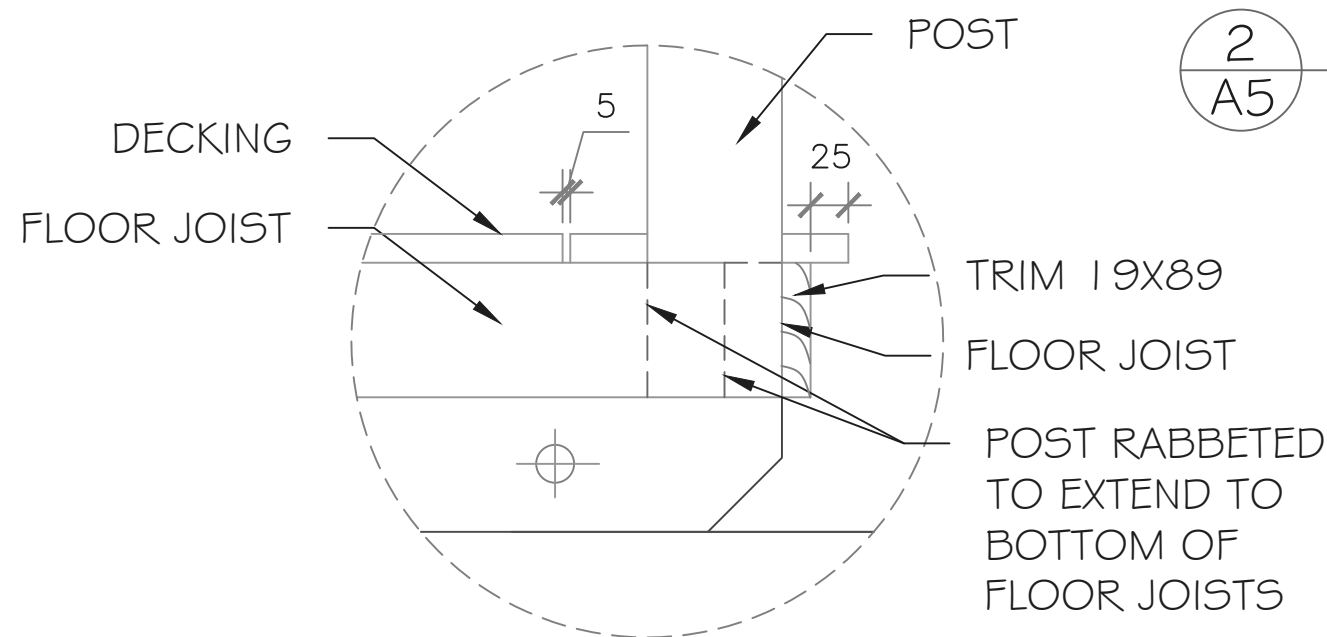
ARCHITECTURAL BRACKET DETAIL-A



LINE OF BEVEL

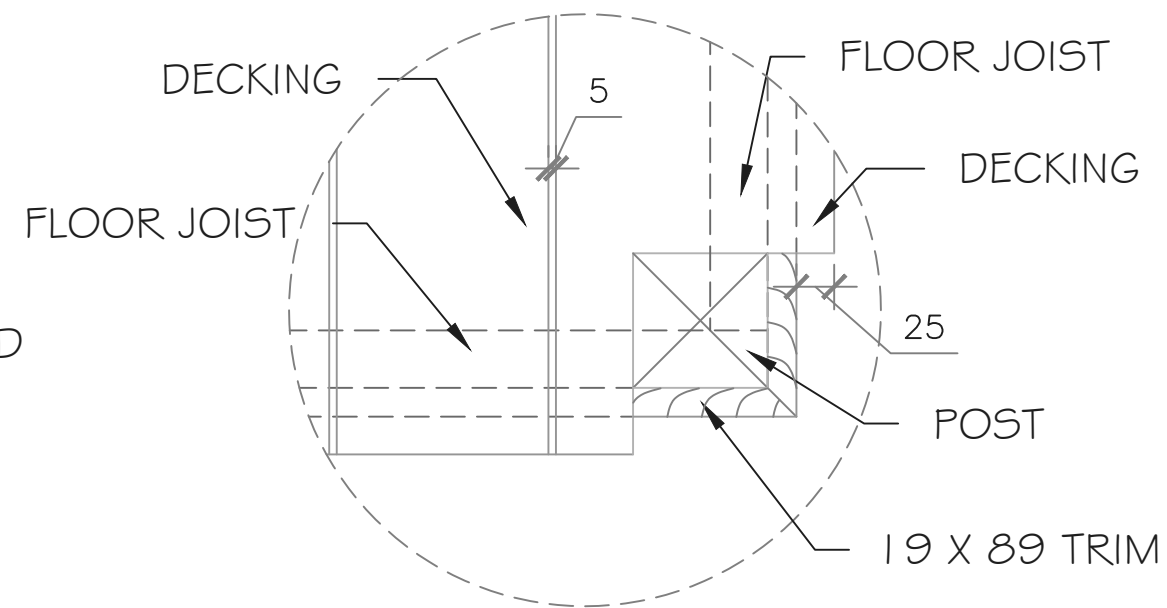
2
A5

ARCHITECTURAL BRACKET DETAIL-B



3
A4

FLOOR JOISTS AT FRONT POSTS



4
A3

DECKING AT FLOOR JOISTS

3
5-2
NUMERACY

General Notes
FOR EDUCATIONAL
PURPOSE ONLY



DOCUMENT USE



No.	Revision/Issue	Date
11	REVISIONS	SEPT,12
...
3	REVISIONS	OCT,14
2	REVISIONS	SEP,08
1	DRAFT	AUG,15

SKILLS
CANADA

NATIONAL
CARPENTRY
SECONDARY

DETAILS

DRAWN BY: I. DU PLESSIS	SHEET #
DATE: 09/12/2017	A10
SCALE: not to scale	