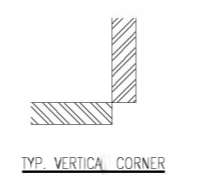
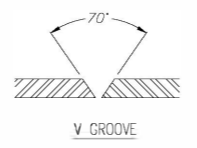
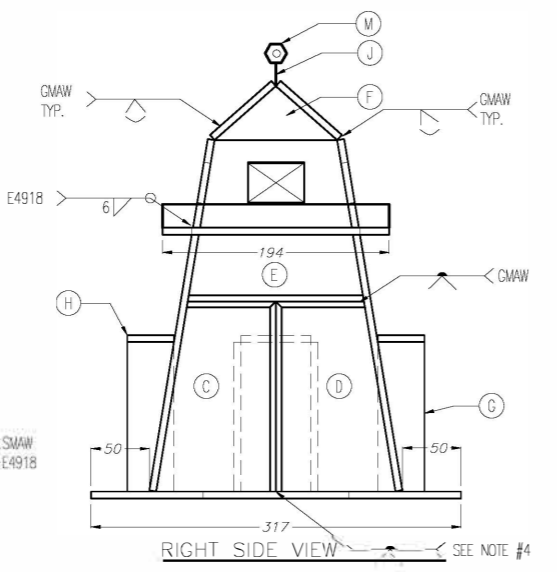
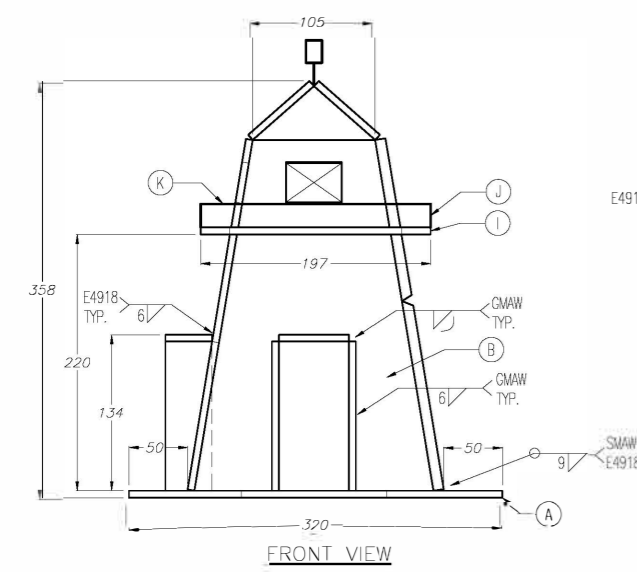
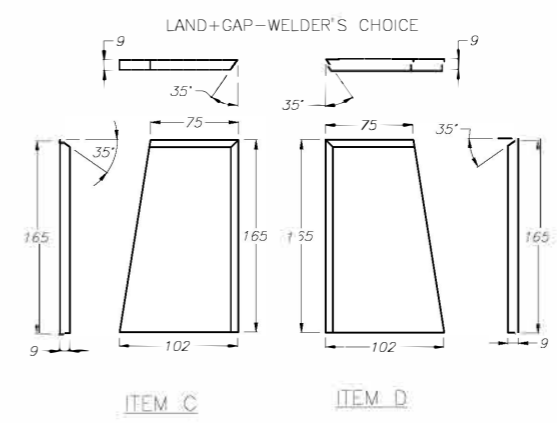
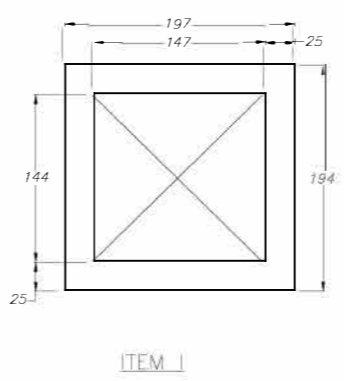
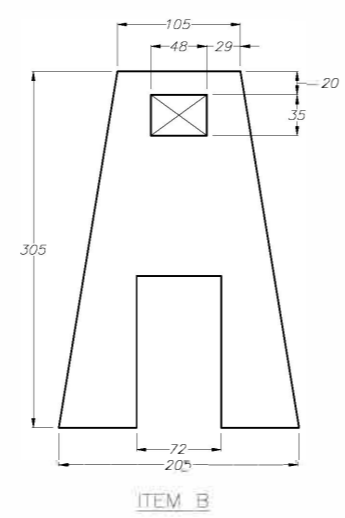
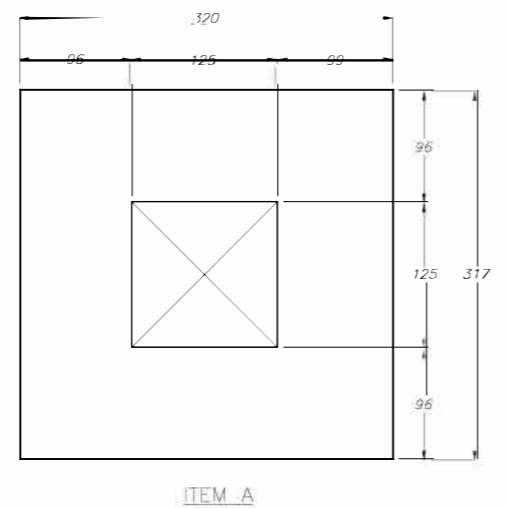
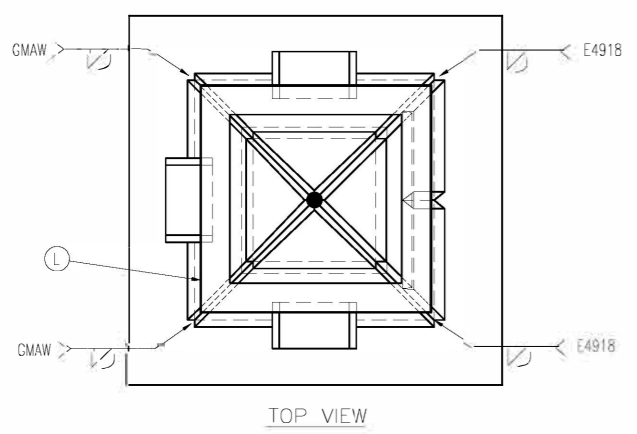
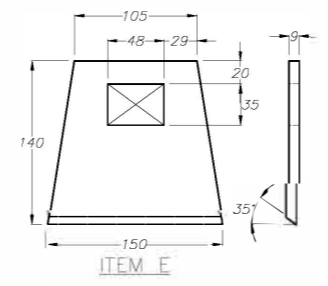
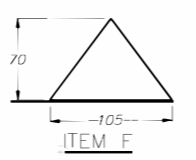


TIME LIMIT: 6 HOURS

RevNo	Revision note	Date	Signature	Checked
1	G was 3	Jan. 4, 2013	JK	JK

- NOTES:
- 1) TACK WELD ALL COMPONENTS TOGETHER EXCEPT J, K, L AND M BEFORE WELDING
 - 2) ALL VERTICAL WELDING PROGRESSION VERTICAL UP
 - 3) PROJECT MUST REMAIN FLAT ON ITS BASEPLATE DURING WELDING
 - 4) V-GROOVE, ROOT-E4310/E4311, FILL+CAP-E4918, LAND+GAP-WELDER'S CHOICE
 - 5) ITEMS J, K, L, M ARE TACKED ONLY AFTER ALL WELDING IS COMPLETE



ALL MATERIAL MILD STEEL
ALL DIMENSIONS IN MILLIMETRES

Item	Quantity	Description	Notes
M	1	HEX NUT X 9MM	
L	2	ROD, 3Ø X 188	
K	2	ROD, 3Ø X 191	
J	5	ROD, 3Ø X 20	
I	1	PLATE 6 x 194 x 197	SHAPE
H	3	PLATE 6 x 40 x 60	
G	6	PLATE 6 x 40 x 128	
F	4	PLATE 6 x 70 x 105	SHAPE
E	1	PLATE 9 x 140 x 150	SHAPE, MILLED
D	1	PLATE 9 x 102 x 165	SHAPE, MILLED
C	1	PLATE 9 x 102 x 165	SHAPE, MILLED
B	3	PLATE 6 x 205 x 305	SHAPE
A	1	PLATE 6 x 317 x 320	SHAPE

Designed by Myron Becker	Checked by Robbie Duncan	Drawn by John Kraisenbrunner	Date Oct 20, 2015	Scale 1:5
-----------------------------	-----------------------------	---------------------------------	----------------------	--------------

DO NOT SCALE DRAWING



SKILLS CANADA

SECONDARY PROJECT Day1

2019-CS-2a

Revision 1 Sheet 1/1