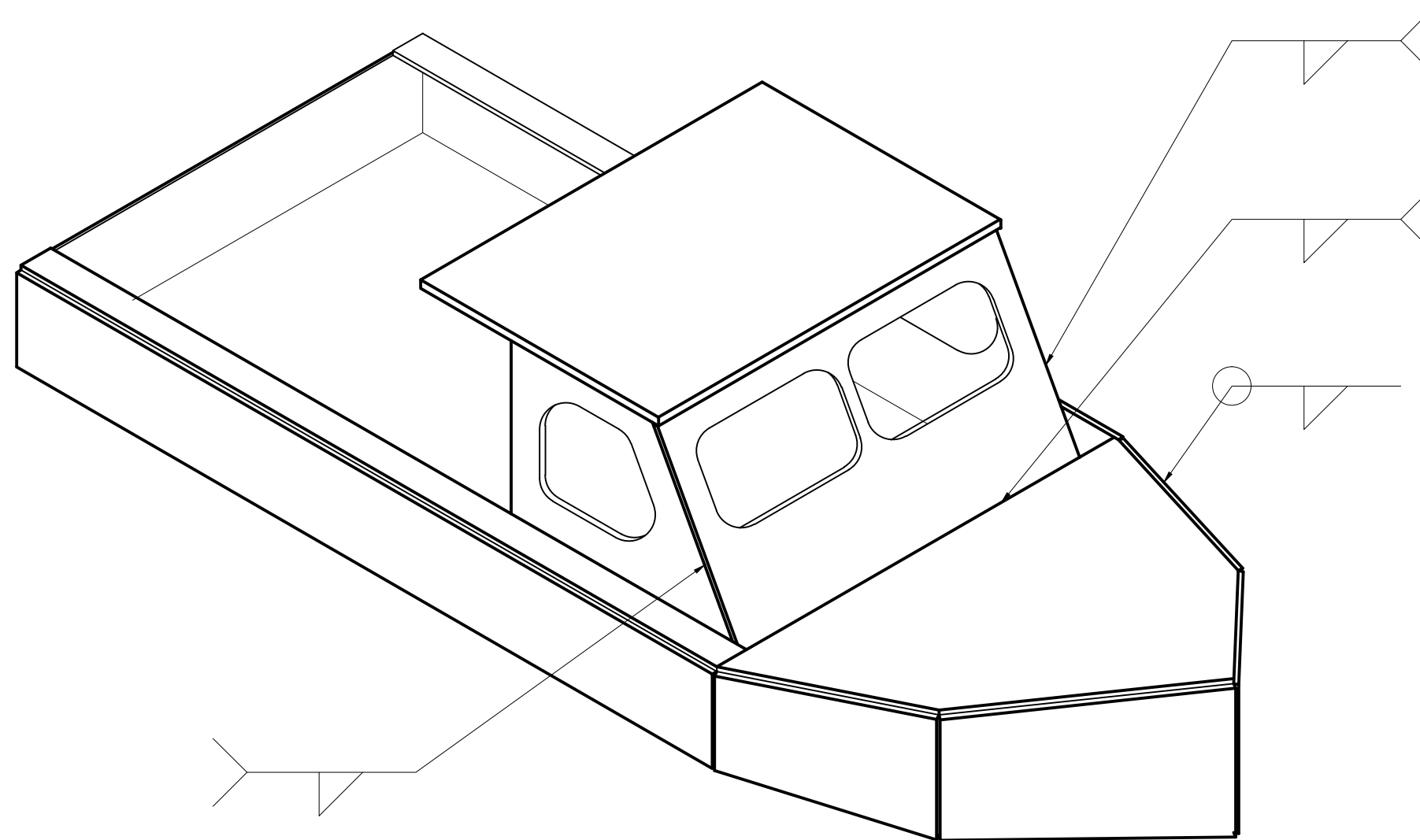


Skills Canada National  
Competition

2019

Olympiades canadiennes  
des métiers et des  
technologies



TIME LIMIT: \_\_\_\_\_

DURÉE: \_\_\_\_\_

Project: PROJET  
BOAT  
BATEAU

Drawn By:

Date:

NOV, 2015

Contact Person:

DEVIN MILLIGAN

Page:

1 OF 2

-ALL FLAT MATERIAL 3MM THICK  
--Stainless ALL DIMENSIONS IN  
MILLIMETERS

-TOUS LES MATÉRIEAUX PLATS ONT UNE  
ÉPAISSEUR DE 3 mm  
-MATÉRIEAUX EN ACIER INOXYDABLE  
TOUTES LES DIMENSIONS SONT EN  
MILLIMÈTRES

LISTE DE MATÉRIEL  
MATERIAL LIST

*ITEM 1	1	170 X 400
*ITEM 2	1	110 X 152
*ITEM 3	2	66 X 84
*ITEM 4	1	170 X 136
*ITEM 5	2	13 X 305
*ITEM 6	1	110 X 152
*ITEM 7	1	30 X 170
*ITEM 8	2	30 X 305
*ITEM 9	2	30 X 77
*ITEM 10	2	43 X 89

\*ÉLÉMENT

Project:

BOAT

BATEAU

Drawn By:

Date:

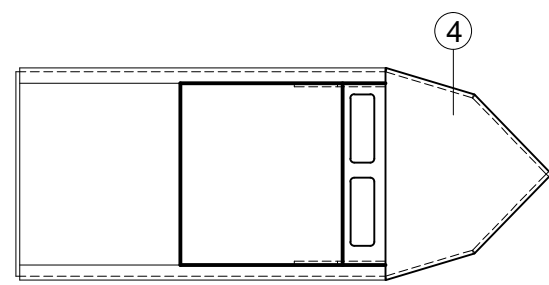
NOV, 2015

Contact Person:

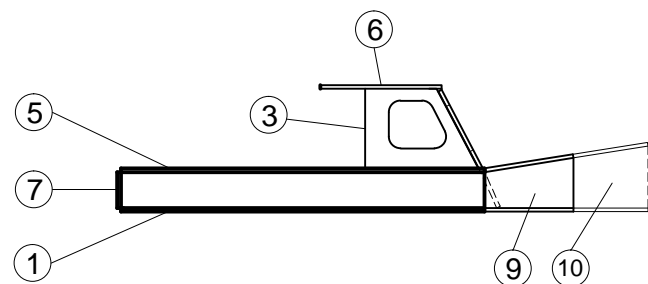
DEVIN MILLIGAN

Page:

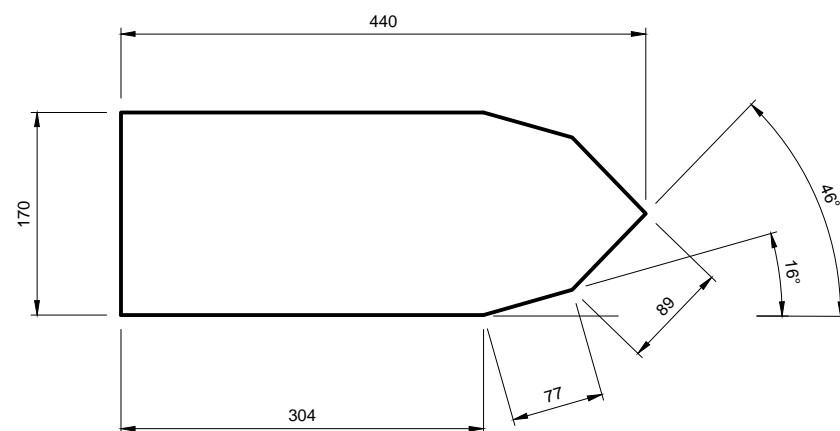
2 OF 2



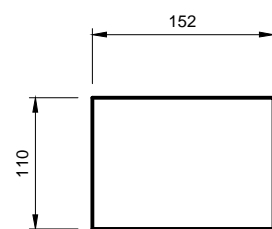
PLAN VIEW VUE EN PLAN



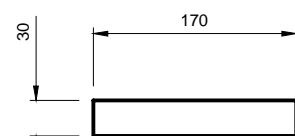
SIDE VIEW  
VUE LATÉRALE



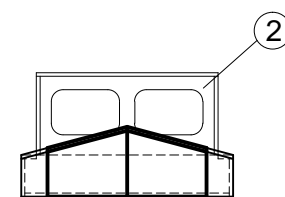
ITEM 1  
ÉLÉMENT 1



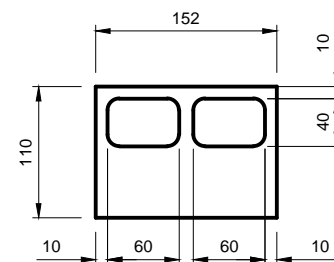
ITEM 6  
ÉLÉMENT 6



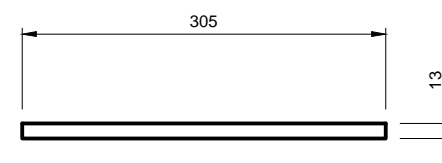
ITEM 7  
ÉLÉMENT 7



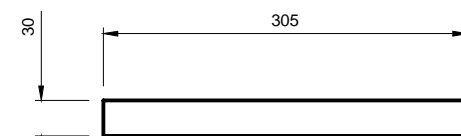
FRONT VIEW VUE AVANT



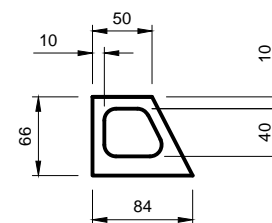
ITEM 2  
ÉLÉMENT 2



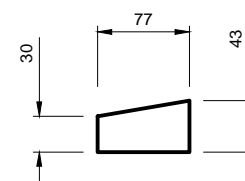
ITEM 5  
ÉLÉMENT 5



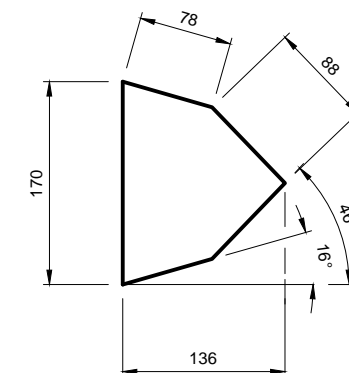
ITEM 8  
ÉLÉMENT 8



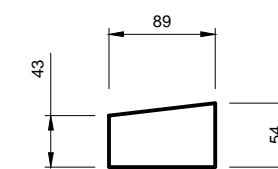
ITEM 3  
ÉLÉMENT 3



ITEM 9  
ÉLÉMENT 9



ITEM 4  
ÉLÉMENT 4



ITEM 10  
ÉLÉMENT 10

NOTES:  
-ALL PARTS MUST BE TACKED IN PLACE  
BEFORE ANY WELDING COMMENCES  
-PROJECT MUST REMAIN ON ITS  
BASEPLATE DURING WELDING  
-ROOT OPENING AND ROOT FACE YOUR  
CHOICE -NO AUTOGENOUS WELDING

NOTES:  
-ASSEMBLER TOUT LE PROJET AVANT DE  
COMMENCER À SOUDER -LE PROJET DOIT  
DEMEURER À PLAT SUR SA PLAQUE D'ASSISE  
DURANT LE SOUDAGE  
-ÉCARTEMENT À LA BASE ET TALON À VOTRE  
CHOIX  
-AUCUNE SOUDURE AUTOGENÈNE