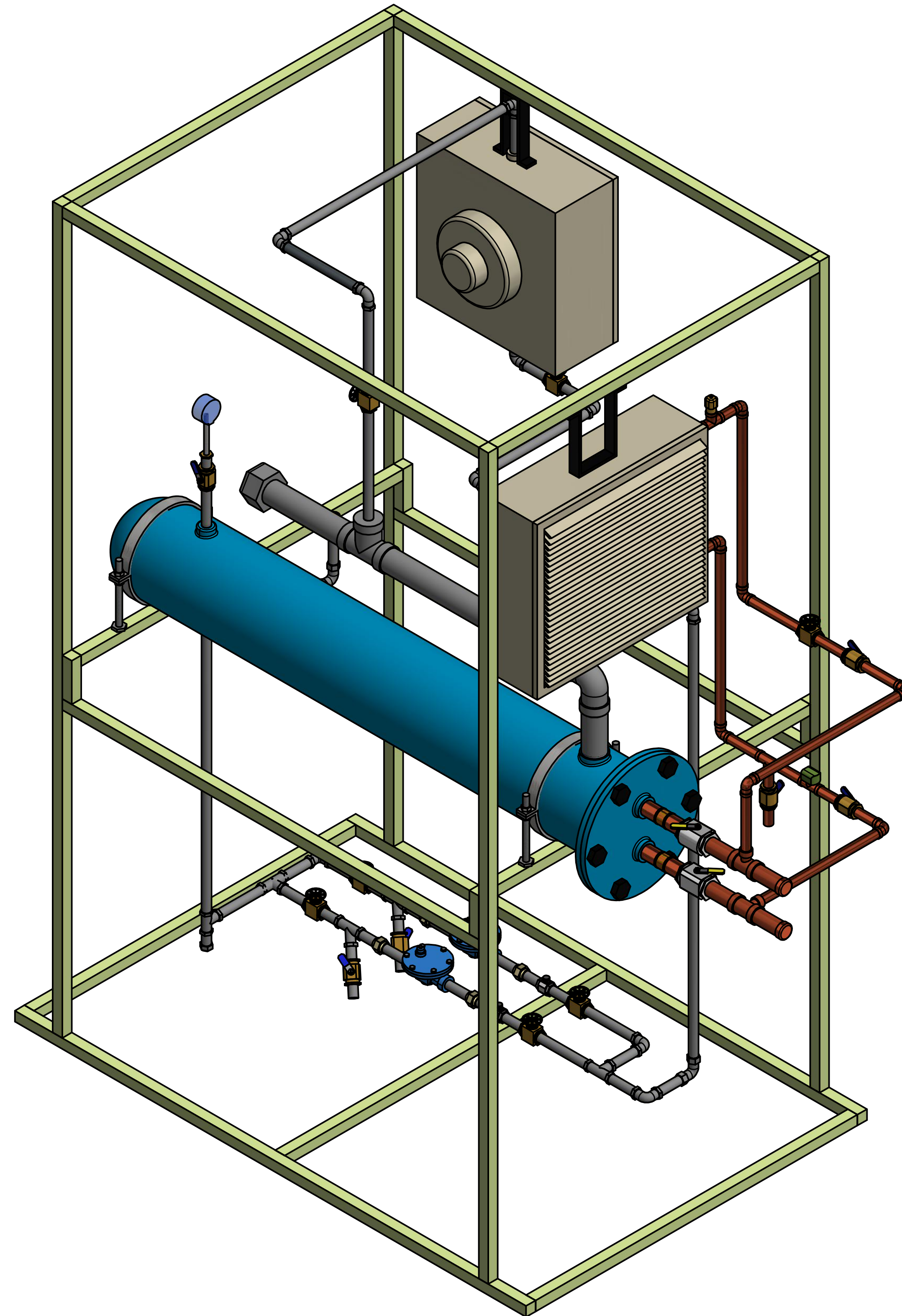
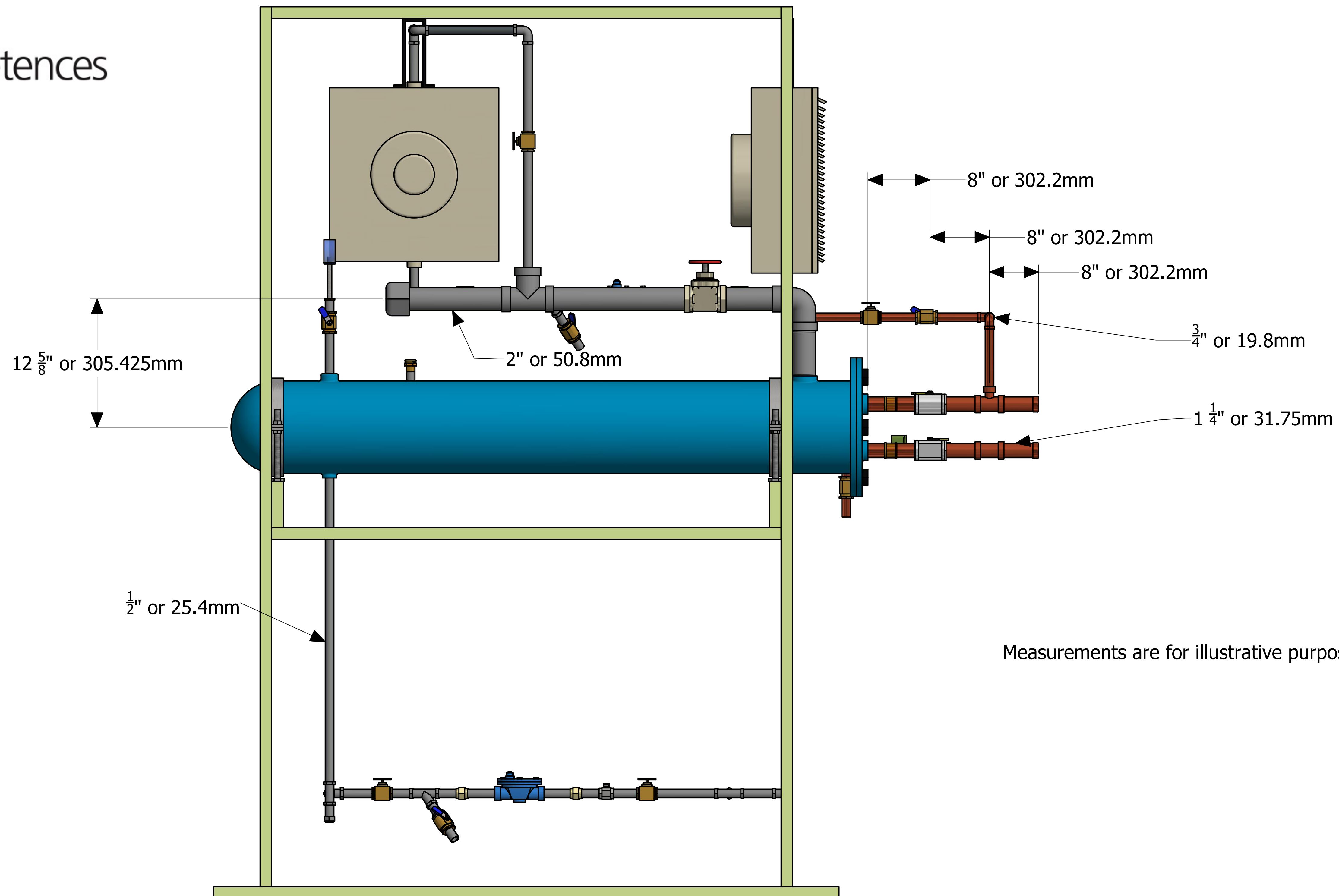


Measurements are for illustrative purposes only



DRAWN Guy Perron	2017-12-13	GP CAD Designs	
		TITLE	
		Steam to Hot Water Converter	
		DWG NO	REV
		Isometric View 1	1
	1/5	SHEET 1 OF 7	



DRAWN Guy Perron	2017-12-13	GP CAD Designs	
		TITLE	
		Steam to Hot Water Converter	
		DWG NO	REV
		Front View	1
	1/5	SHEET 4 OF 7	

Hot Water Unit
16"x18"x5 $\frac{1}{4}$ "

Measurements are for illustrative purposes only

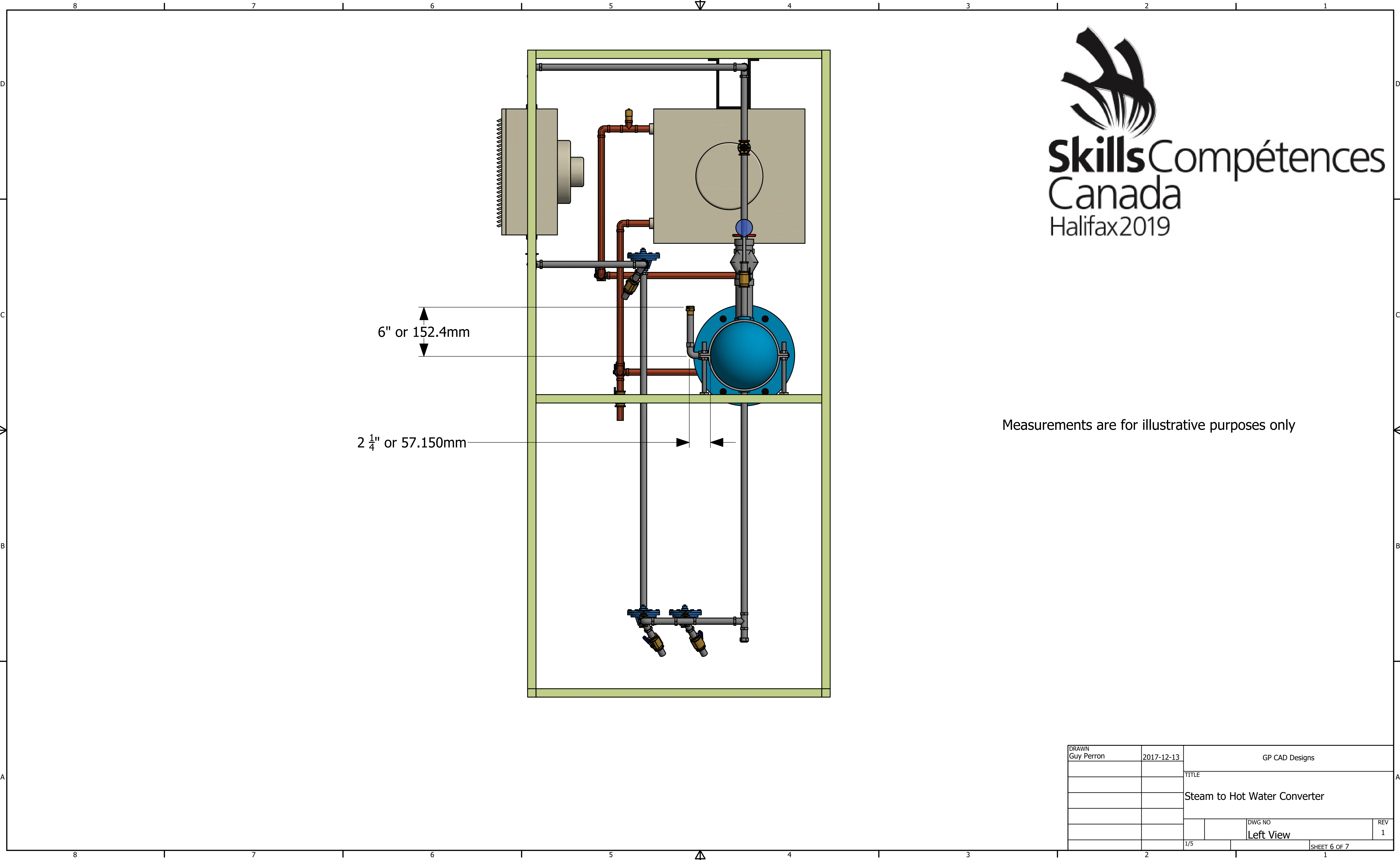
28" or 711.2

14" or 355.60mm

32" or 812.80

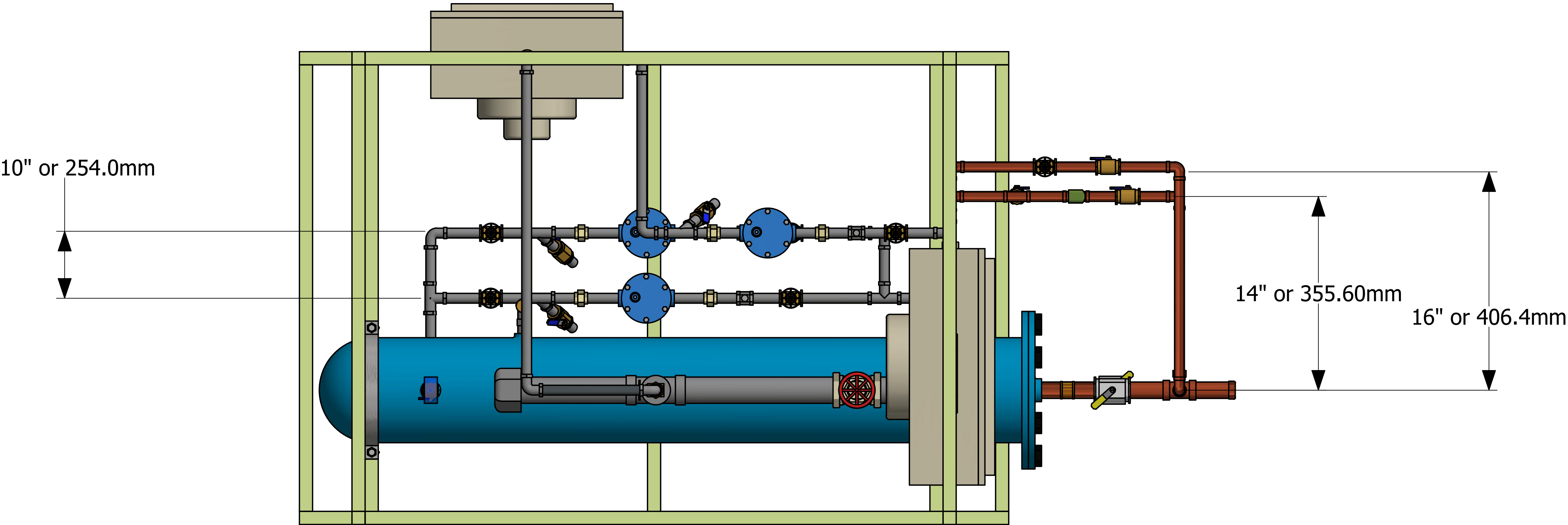
36" or 914.40mm

DRAWN Guy Perron	2017-12-13	GP CAD Designs	
		TITLE	
		Steam to Hot Water Converter	
		DWG NO	REV
		Right View	1
	1/5	SHEET 5 OF 7	



Measurements are for illustrative purposes only

DRAWN Guy Perron	2017-12-13	GP CAD Designs	
		TITLE	
		Steam to Hot Water Converter	
		DWG NO	REV
		Left View	1
	1/5	SHEET 6 OF 7	



Measurements are only for illustrative purposes only

DRAWN Guy Perron	2017-12-13	GP CAD Designs	
		TITLE	
		Steam to Hot Water Converter	
		DWG NO	REV
		Top View	1
	1/5	SHEET 7 OF 7	