



  
**SkillsCompétences**  
Canada  
Vancouver2020

**Project / Projet**

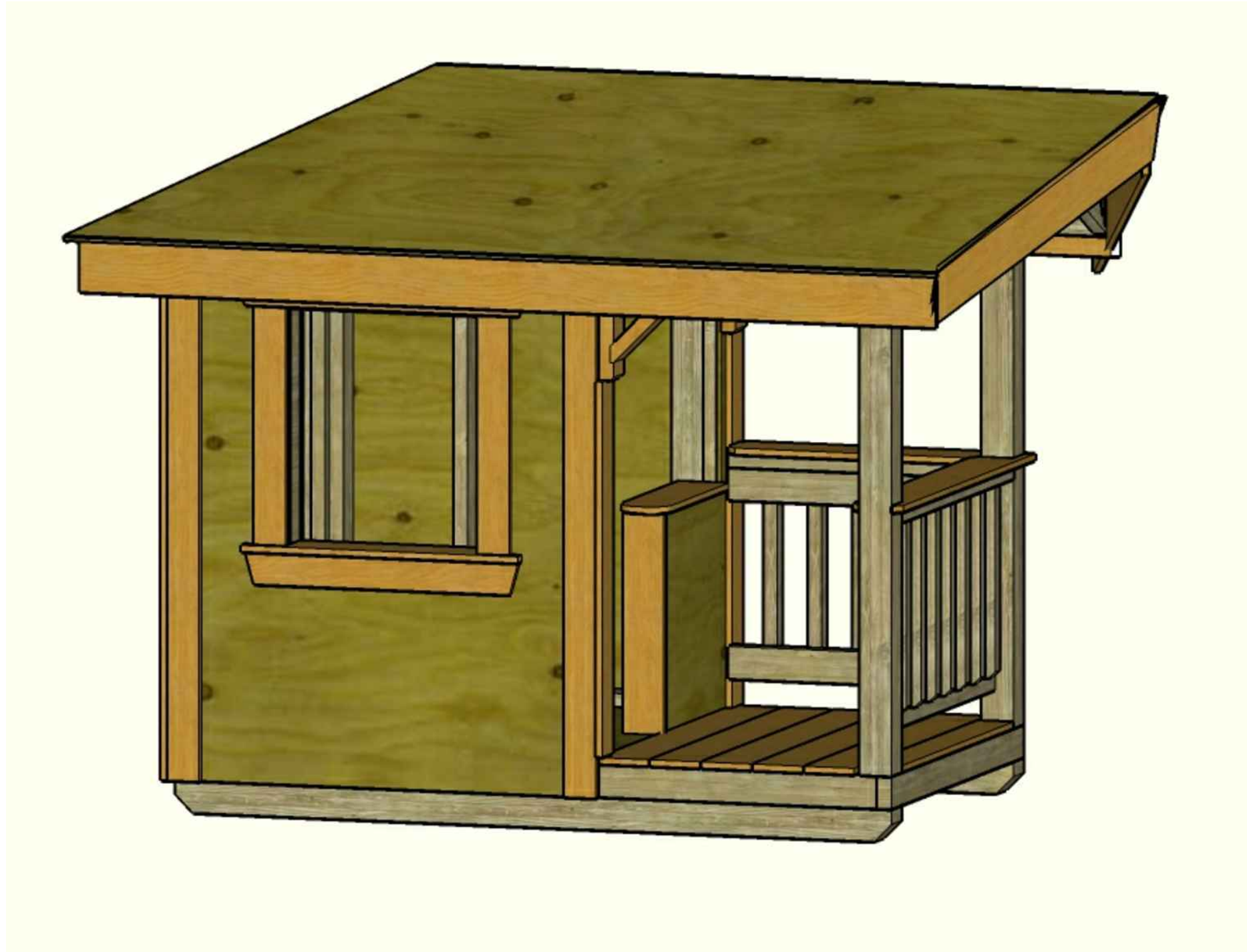
**Carpentry**

**Charpenterie**

**Skill / Métier 26**



SCNC / OCMT  
**2020**  
VANCOUVER



General Notes  
FOR EDUCATIONAL  
PURPOSE ONLY  
 1)

CONTENTS

- A1 - ISOMETRIC
- A2- PLANS
- A3- PLANS
- A4- ELEVATIONS
- A5- ELEVATIONS
- A6- SECTIONS
- A7- DETAILS
- A8- DETAILS
- A9- DETAILS
- A10- DETAILS

9	REVISIONS	SEPT. 12
...	...	...
2	REVISIONS	DEC.12
1	DRAFT	NOV. 19
No.	Revision/Issue	Date

SKILLS  
CANADA

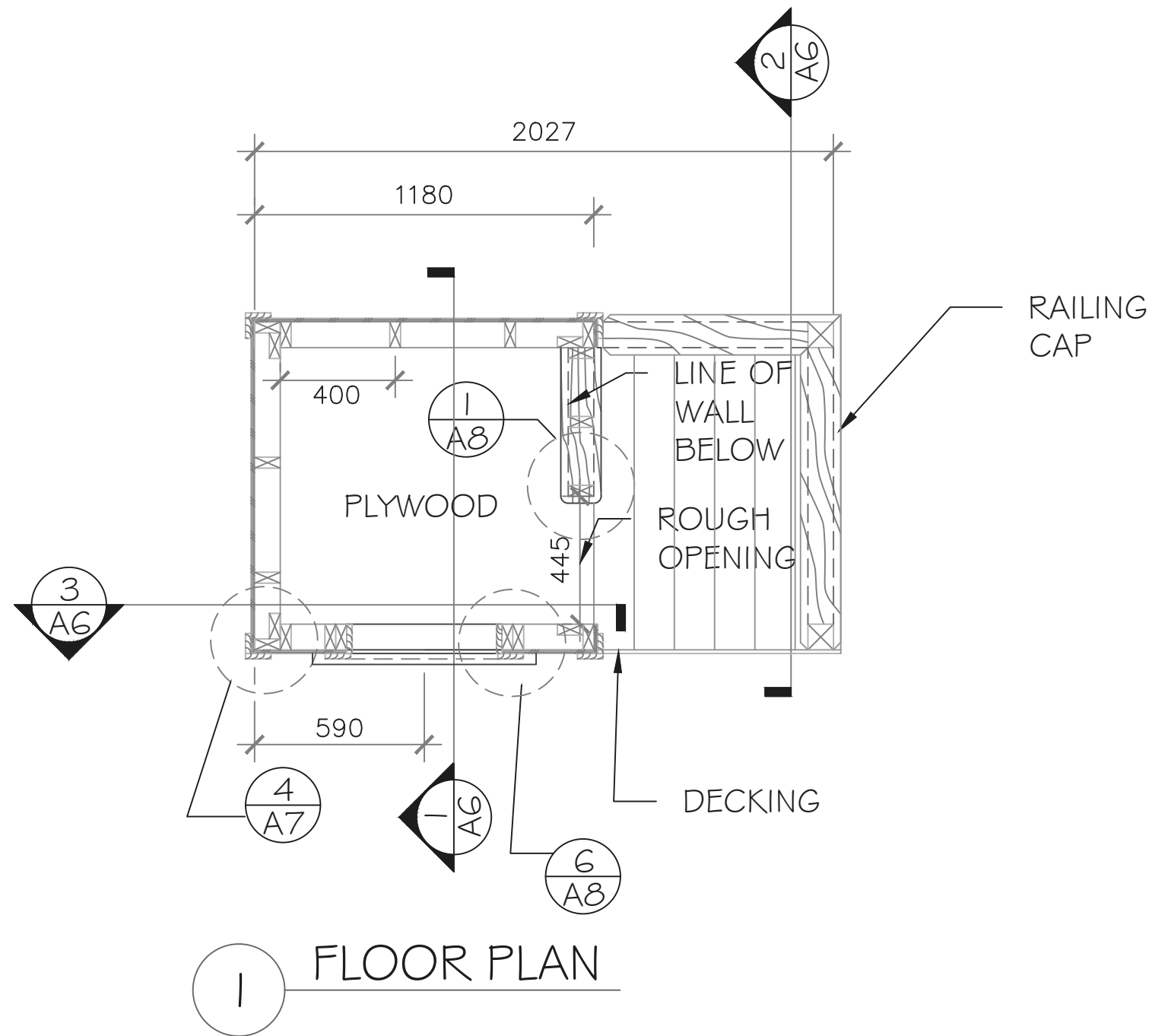
CARPENTRY  
POST  
SECONDARY

ISOMETRIC  
VERSION 2



DOCUMENT USE

DRAWN BY: I. DU PLESSIS	SHEET #
DATE: SCNC2020	A1
SCALE: AS NOTED	



General Notes  
FOR EDUCATIONAL  
PURPOSE ONLY

- 1) All sheathing stock to be verified on site
- 2) Wall framing 2x4 = 38x89
- 3) Finish/Soften all exposed edges
- 4) All framing at 400 o/c
- 5) All dimensions to framing
- 6) All fastening for this project to be as per the National Building Code.

No.	Revision/Issue	Date
9	REVISIONS	SEPT. 12
...	...	...
2	REVISIONS	DEC.12
1	DRAFT	NOV. 19

SKILLS  
CANADA

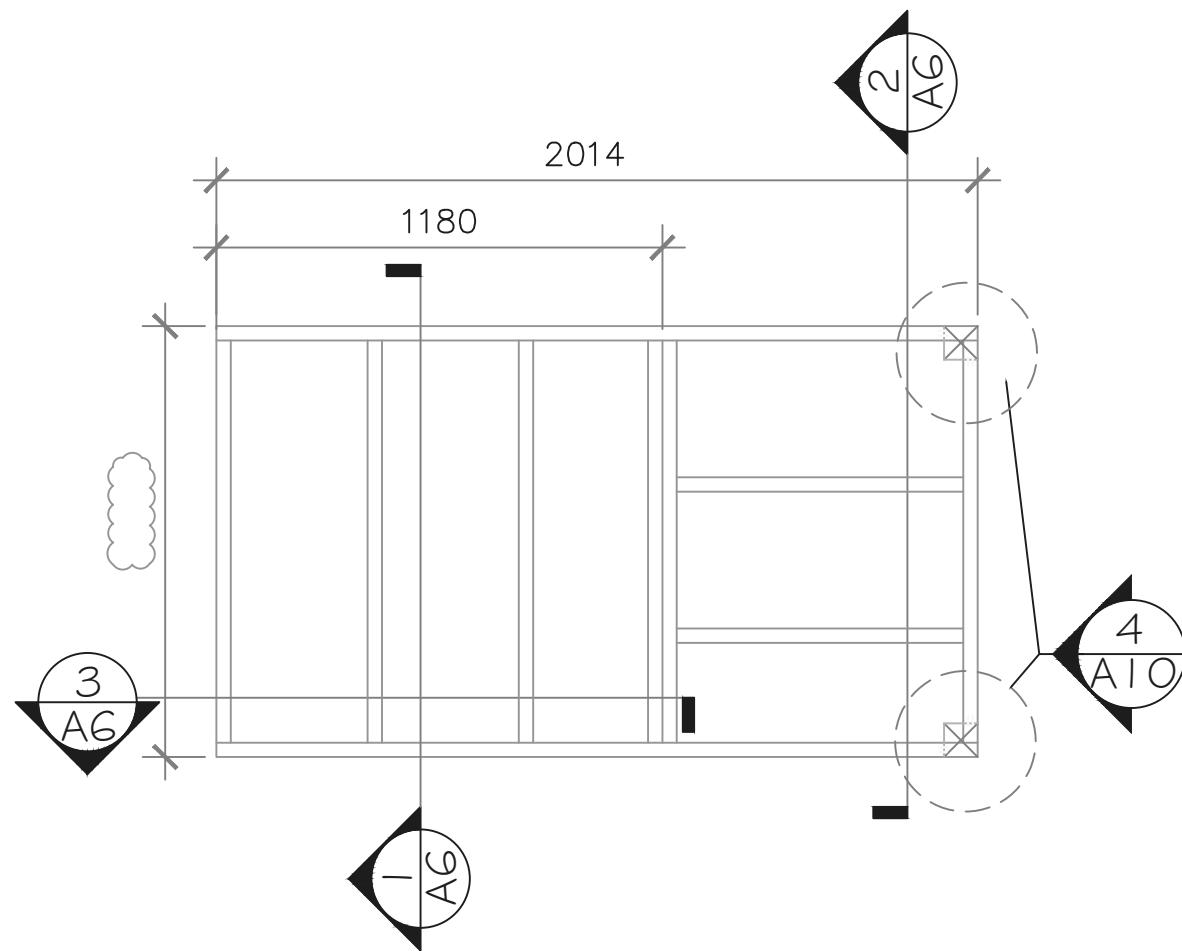
CARPENTRY  
POST  
SECONDARY

PLANS  
VERSION 2

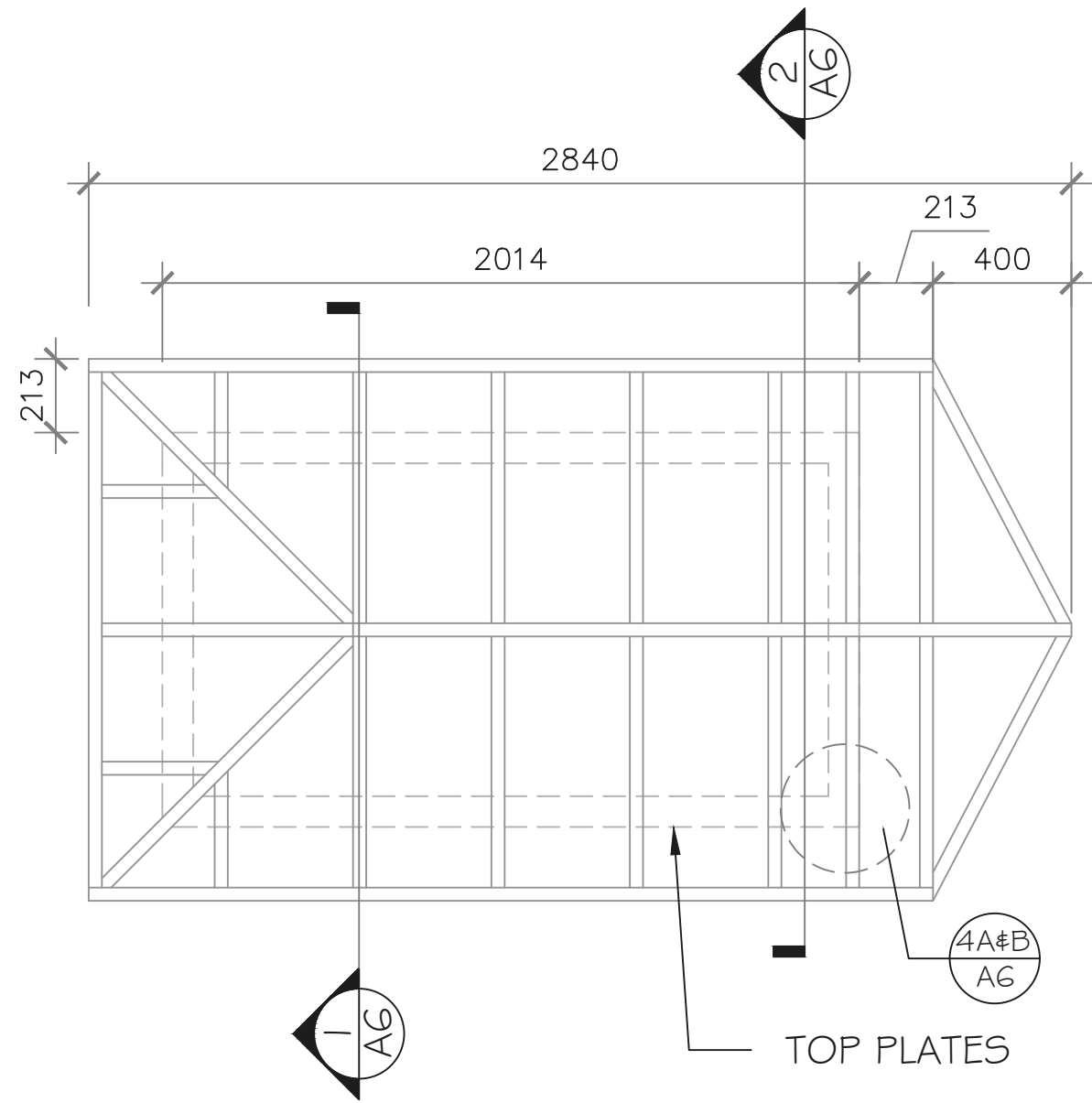


DOCUMENT USE

DRAWN BY: I. DU PLESSIS	SHEET #
DATE: SCNC2020	A2
SCALE: AS NOTED	



2 FLOOR JOIST PLAN



1 ROOF FRAMING PLAN

**General Notes**  
 FOR EDUCATIONAL PURPOSE ONLY  
 1) No sheathing for roof  
 2) Ridge and hip stock 2x6/38x140  
 3) Hips to be back-bevelled; not dropped

No.	Revision/Issue	Date
9	REVISIONS	SEPT. 12
...	...	...
2	REVISIONS	DEC.12
1	DRAFT	NOV. 19

SKILLS CANADA

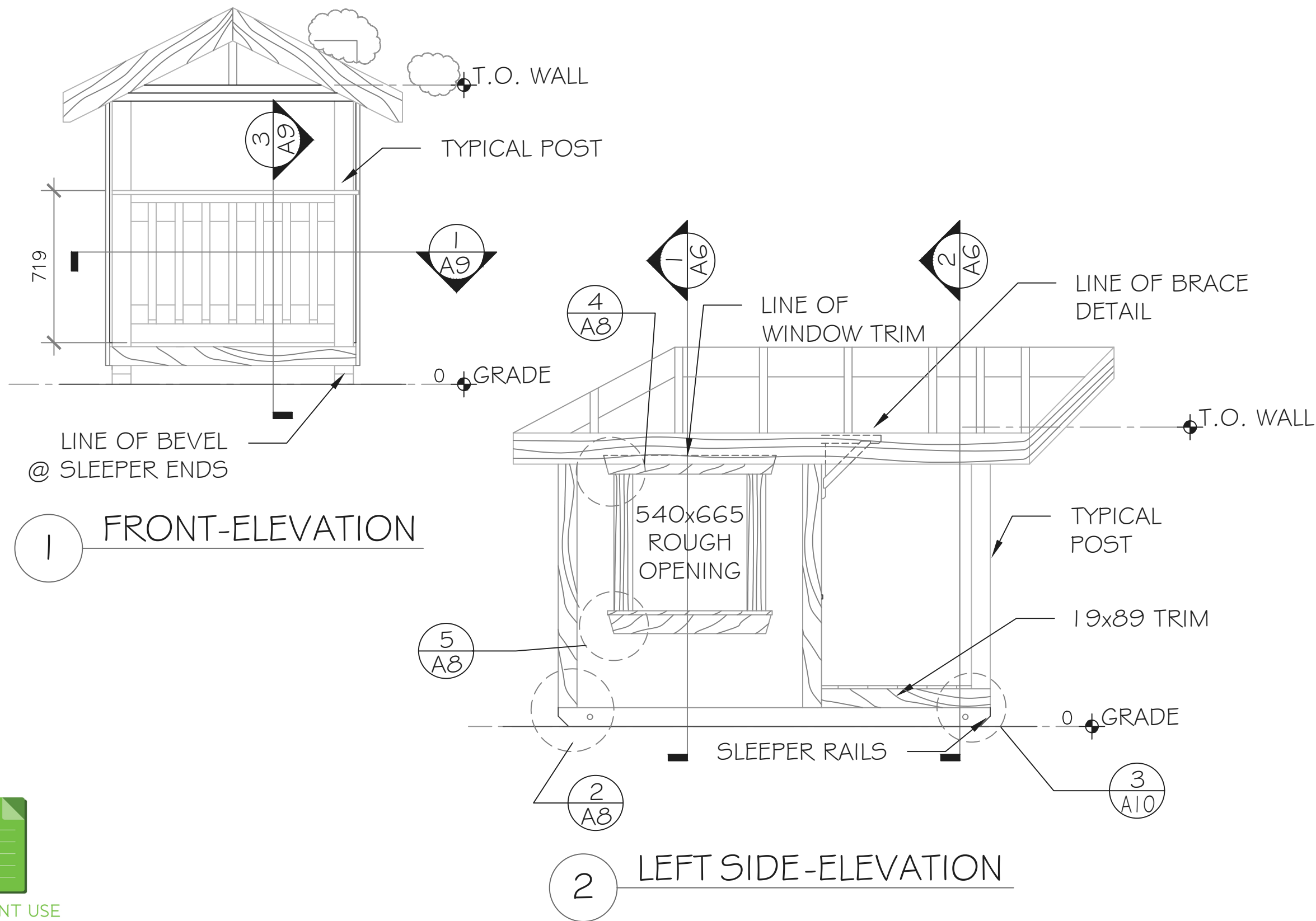
CARPENTRY POST SECONDARY

PLANS VERSION 2

DRAWN BY: I. DU PLESSIS	SHEET #
DATE: SCNC2020	A3
SCALE: AS NOTED	



DOCUMENT USE



**General Notes**  
 FOR EDUCATIONAL PURPOSE ONLY  
 1) T.O. = Top of Wall  
 2) Sleeper rails treated 4x4  
 3) Fascia 1x6/19x140  
 4) Window trim 1x4/19x89  
 5) Balusters 2x2/38x39

No.	Revision/Issue	Date
9	REVISIONS	SEPT. 12
...	...	...
2	REVISIONS	DEC.12
1	DRAFT	NOV. 19

**SKILLS CANADA**

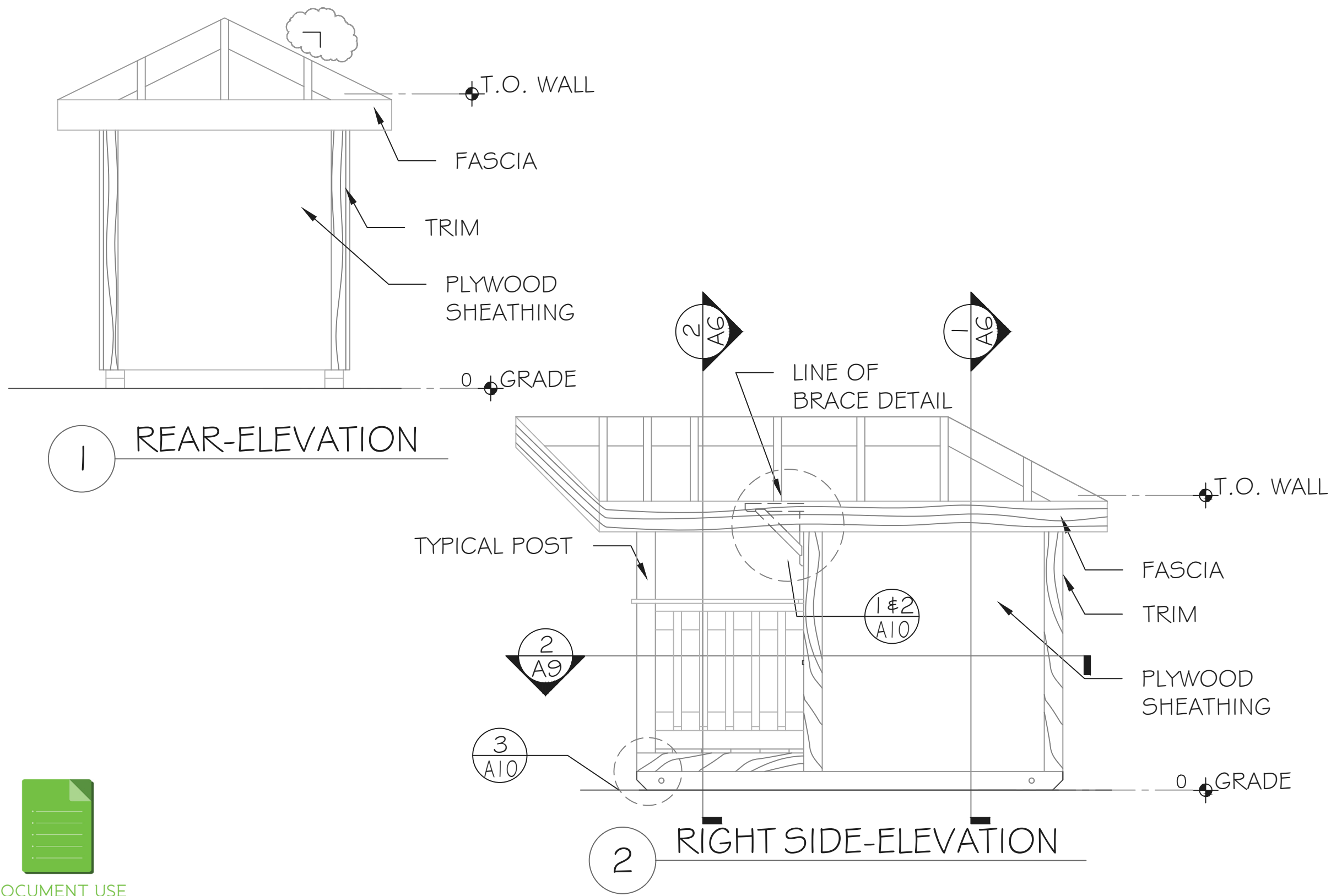
CARPENTRY POST SECONDARY

**ELEVATIONS**  
VERSION 2

DRAWN BY: I. DU PLESSIS	SHEET #
DATE: SCNC2020	A4
SCALE: AS NOTED	



General Notes  
 FOR EDUCATIONAL  
 PURPOSE ONLY  
 1)



No.	Revision/Issue	Date
9	REVISIONS	SEPT. 12
...	...	...
2	REVISIONS	DEC.12
1	DRAFT	NOV. 19

SKILLS  
 CANADA

CARPENTRY  
 POST  
 SECONDARY

ELEVATIONS  
 VERSION 2

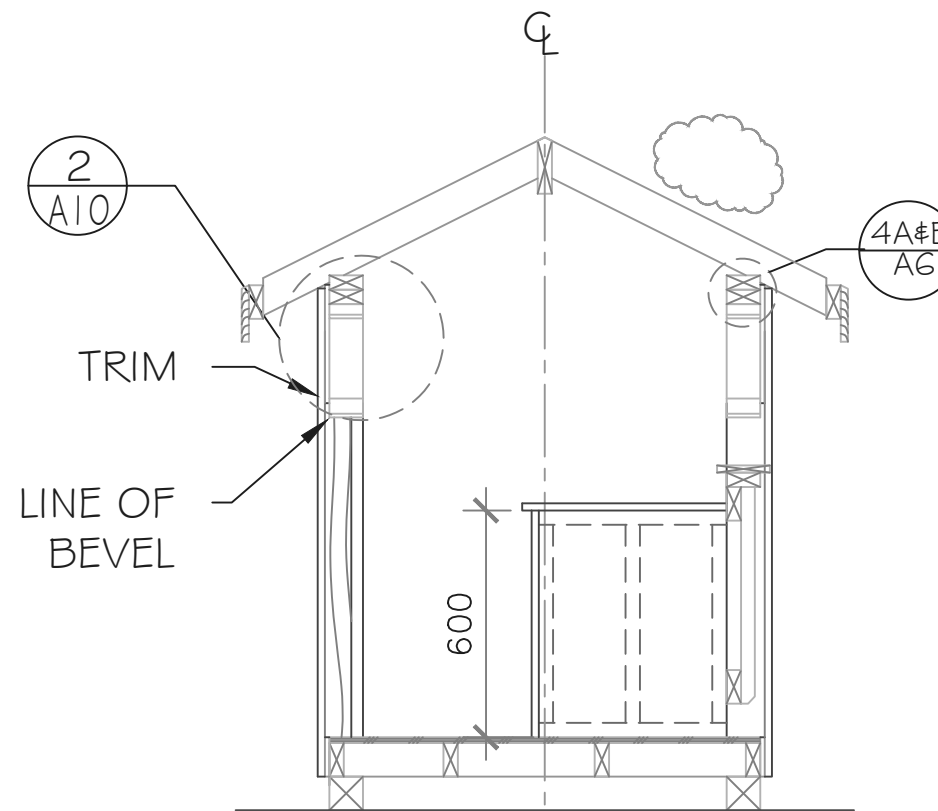
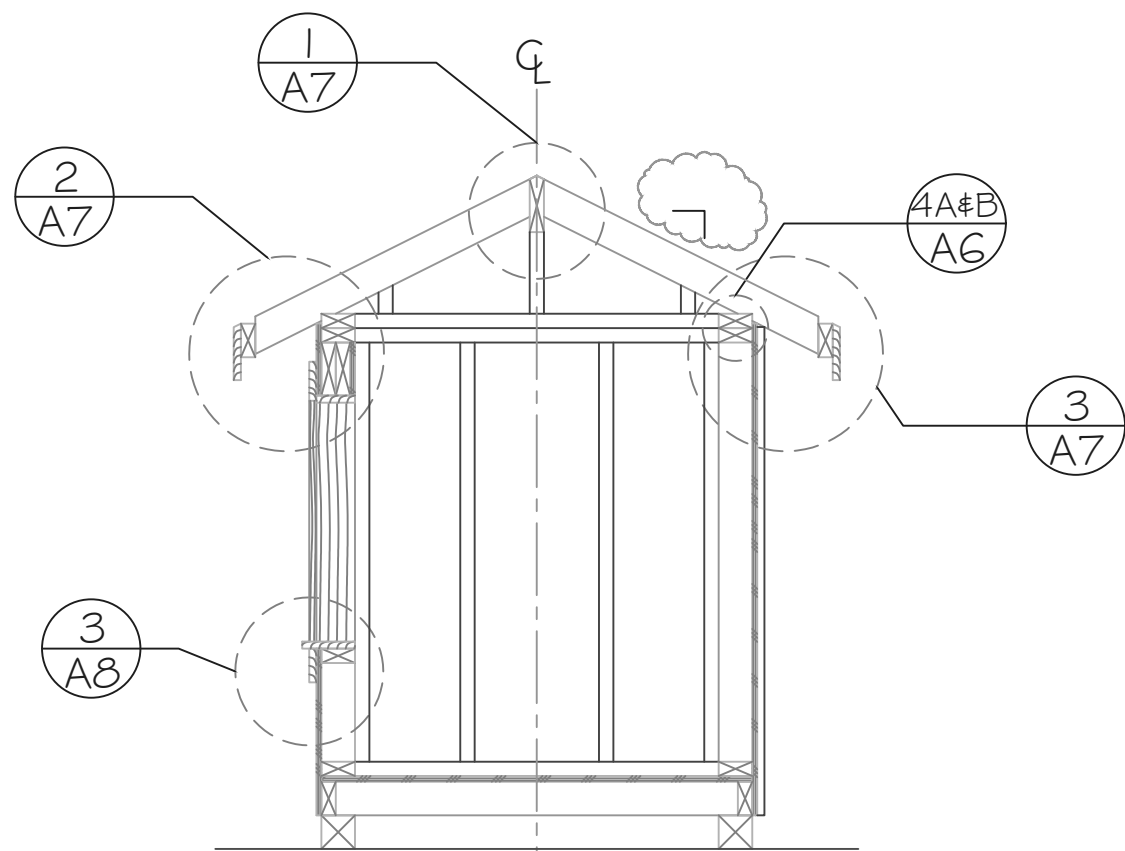
DRAWN BY: I. DU PLESSIS	SHEET #
DATE: SCNC2020	A5
SCALE: AS NOTED	



DOCUMENT USE

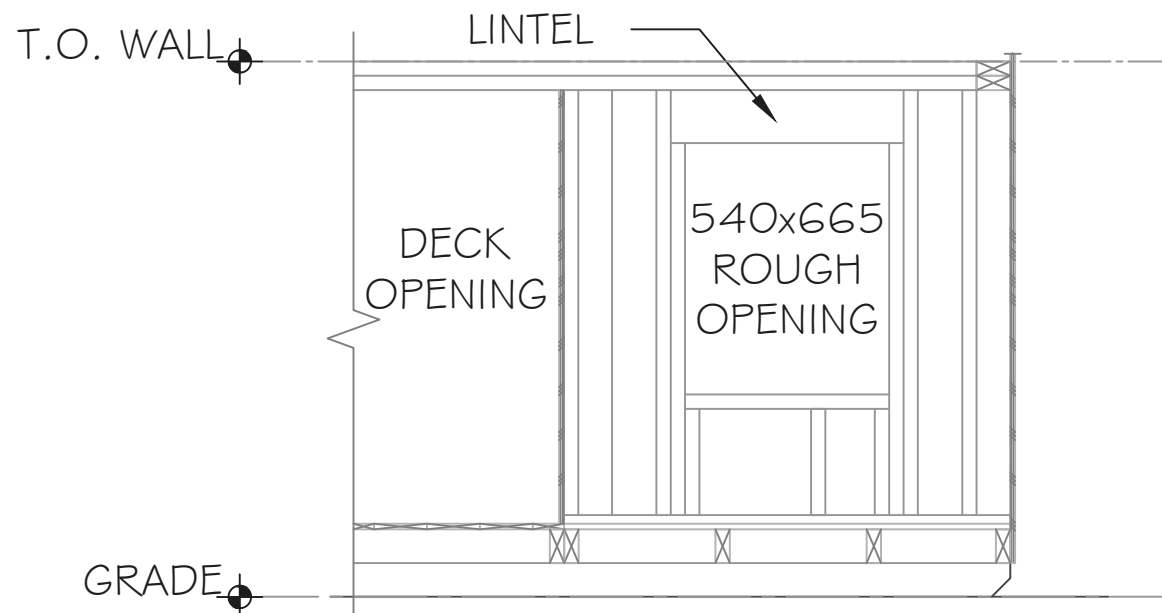


DOCUMENT USE

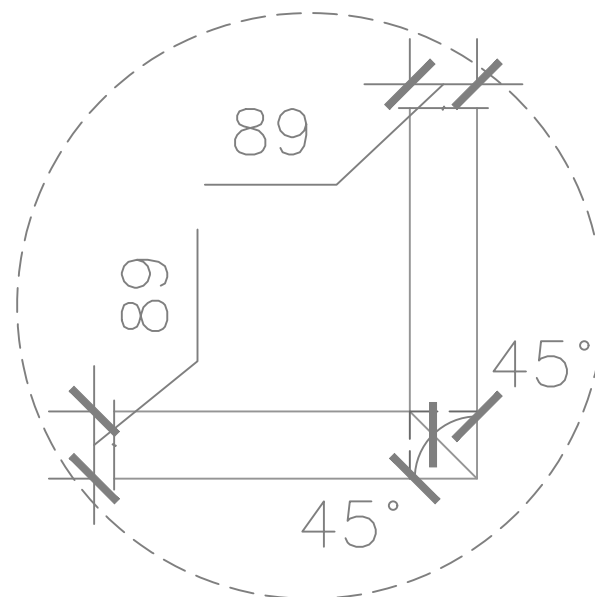


1 SECTION-1  
A2, A3, A4, A5

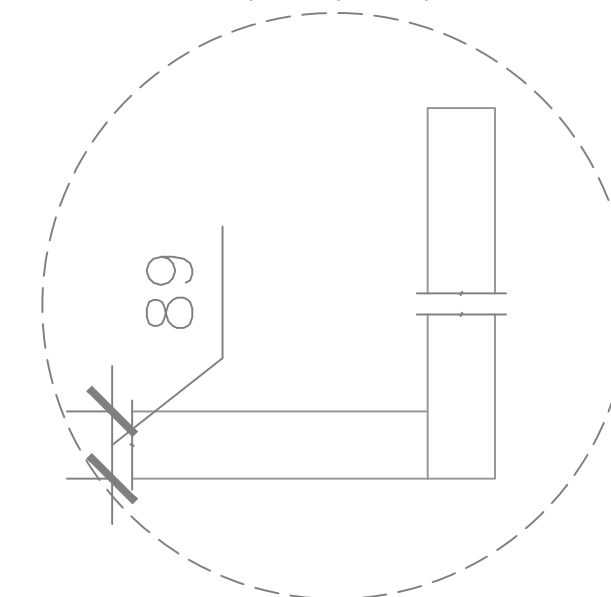
2 SECTION 2  
(EXCLUDING BACK WALL)  
A2, A3, A4, A5



3 SECTION-3  
A2, A3



4A PLAN OF LOWER TOP PLATE  
CONNECTION AT POSTS



4B PLAN OF UPPER TOP PLATE  
CONNECTION AT POSTS

General Notes  
FOR EDUCATIONAL  
PURPOSE ONLY

1) Lintel 2 ply  
89x140

No.	Revision/Issue	Date
9	REVISIONS	SEPT. 12
...	...	...
2	REVISIONS	DEC.12
1	DRAFT	NOV. 19

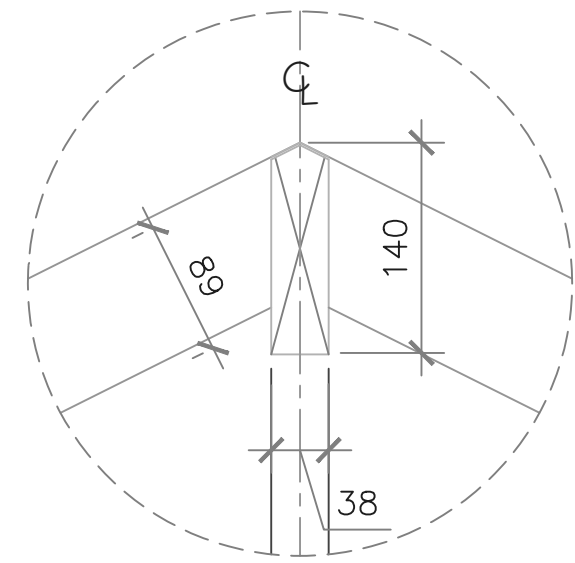
SKILLS  
CANADA

CARPENTRY  
POST  
SECONDARY

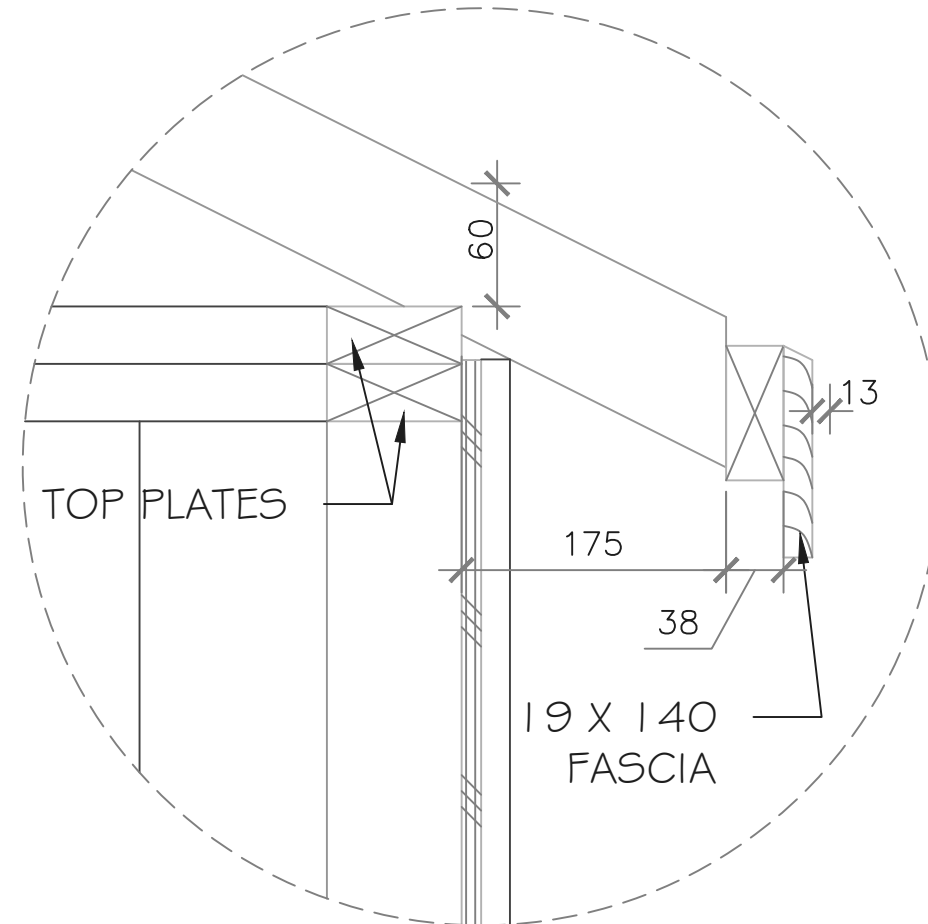
SECTIONS  
VERSION 2

DRAWN BY:  
I. DU PLESSIS  
DATE: SCNC2020  
SCALE: AS NOTED

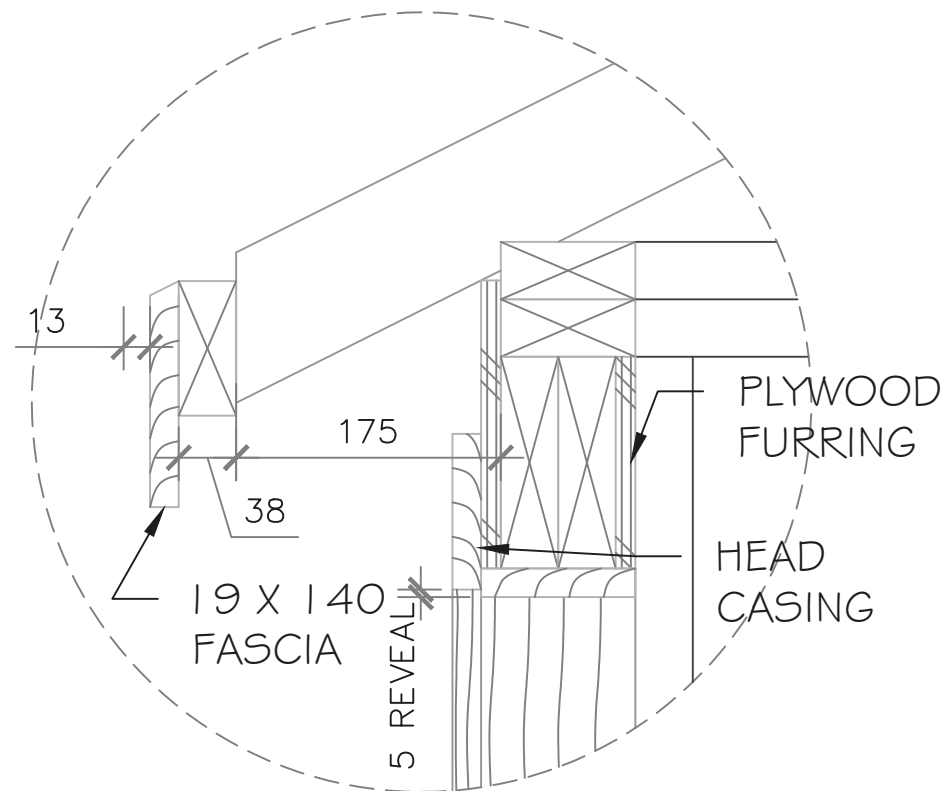
SHEET #  
A6



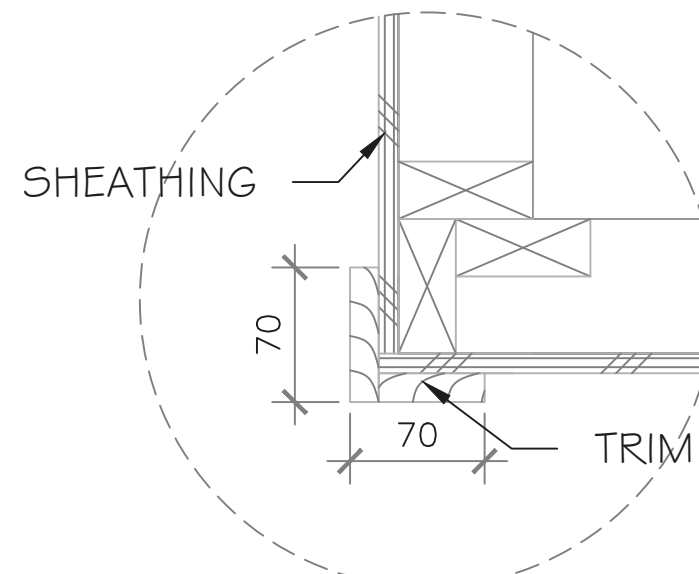
1 RIDGE DETAIL



3 TYP. EAVE DETAIL



2 EAVE DETAIL @ LINTEL



4 TYP. WALL @ CORNER

General Notes  
 FOR EDUCATIONAL  
 PURPOSE ONLY  
 1) FASCIA CORNERS  
 TO BE MITRED

No.	Revision/Issue	Date
9	REVISIONS	SEPT. 12
...	...	...
2	REVISIONS	DEC.12
1	DRAFT	NOV. 19

SKILLS  
CANADA

CARPENTRY  
POST  
SECONDARY

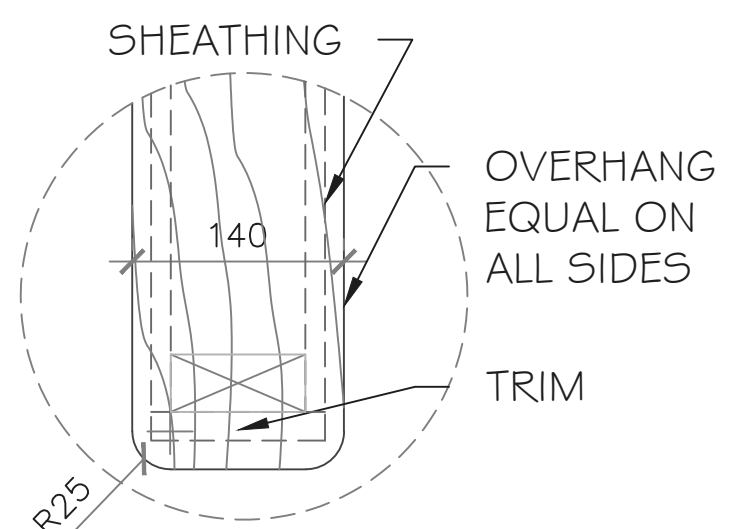
DETAILS  
VERSION 2

DRAWN BY: I. DU PLESSIS	SHEET #
DATE: SCNC2020	A7
SCALE: AS NOTED	

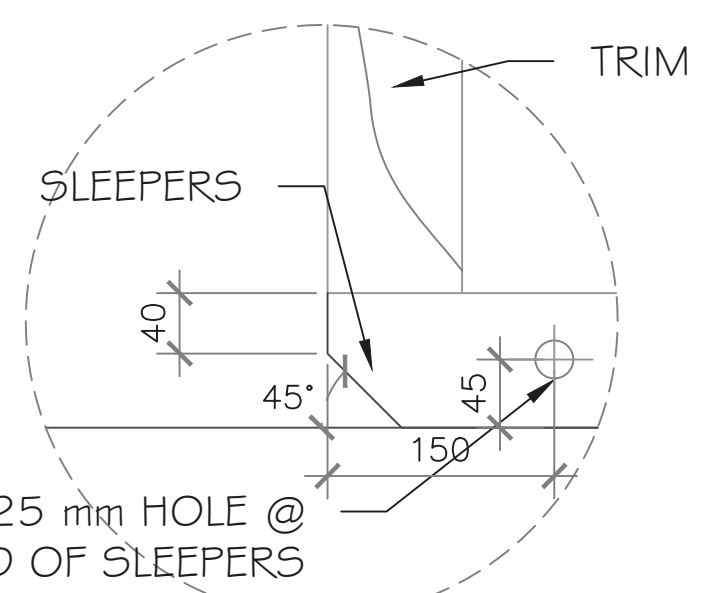


DOCUMENT USE

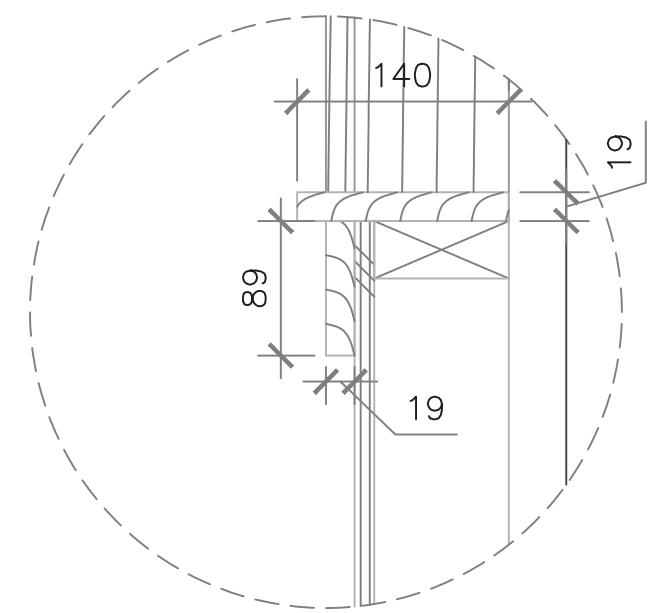




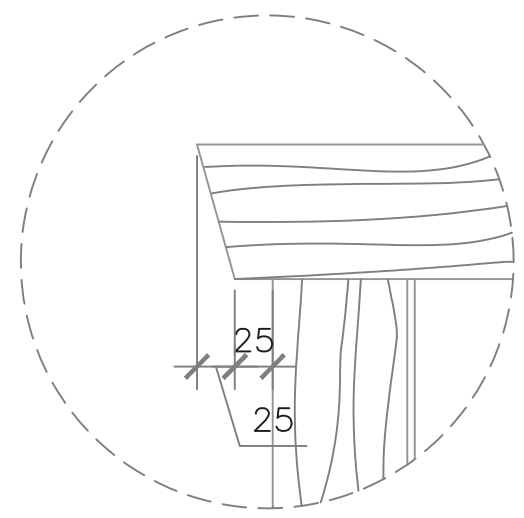
1  
A2  
WALL CAP DETAIL



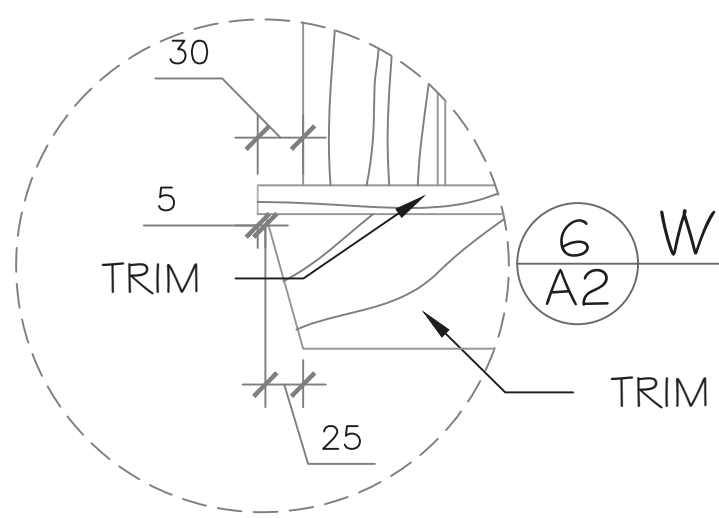
2  
A4  
SLEEPER ANGLE DETAIL



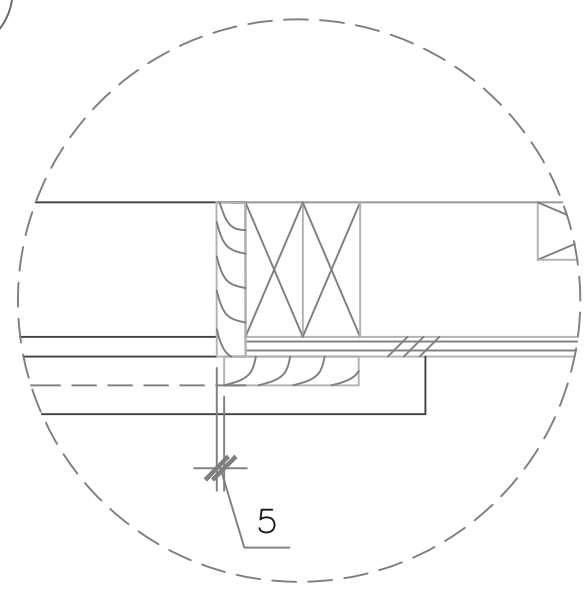
3  
A4  
WINDOW SILL DETAIL



4  
A4  
WINDOW HEAD TRIM DETAIL



5  
A4  
WINDOW SILL TRIM DETAIL



6  
A2  
WINDOW SILL PLAN DETAIL

General Notes  
FOR EDUCATIONAL  
PURPOSE ONLY  
1)

No.	Revision/Issue	Date
9	REVISIONS	SEPT. 12
...	...	...
2	REVISIONS	DEC.12
1	DRAFT	NOV. 19

SKILLS  
CANADA

CARPENTRY  
POST  
SECONDARY

DETAILS  
VERSION 2

DRAWN BY: I. DU PLESSIS	SHEET #
DATE: SCNC2020	A8
SCALE: AS NOTED	

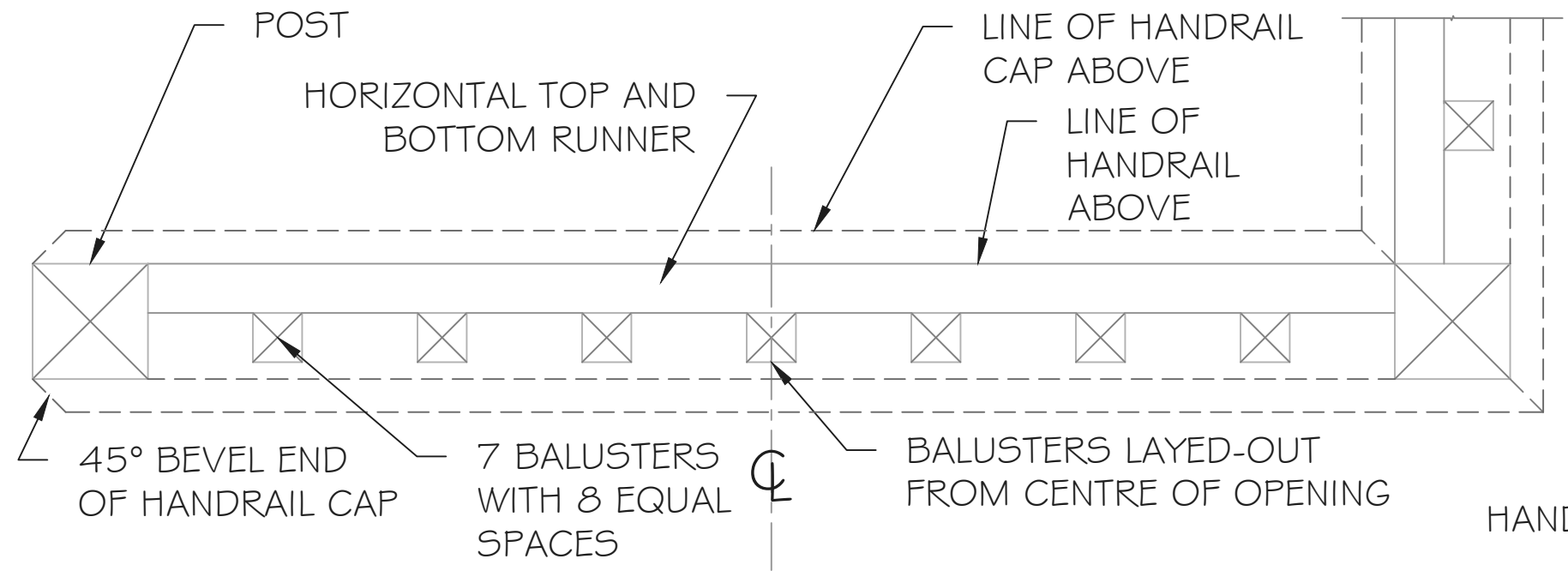


DOCUMENT USE

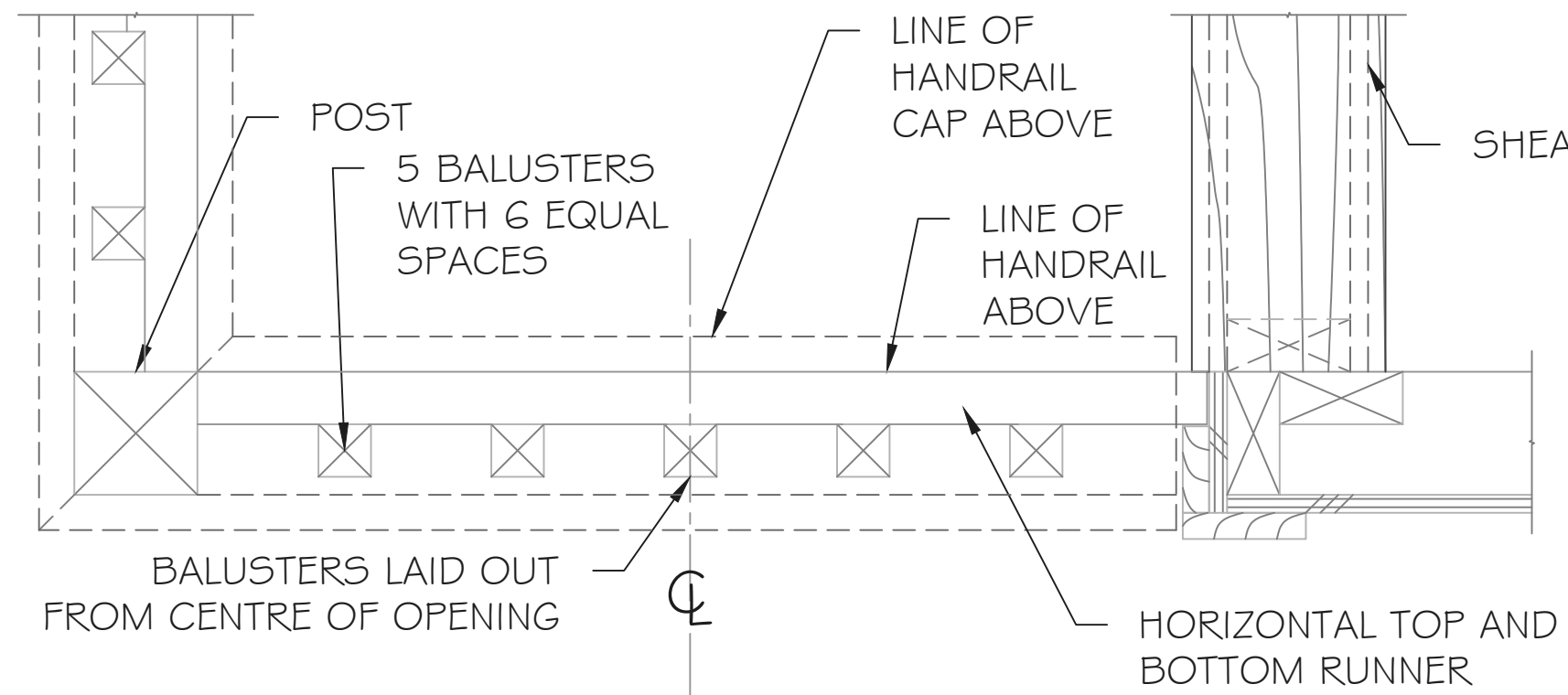


DOCUMENT USE

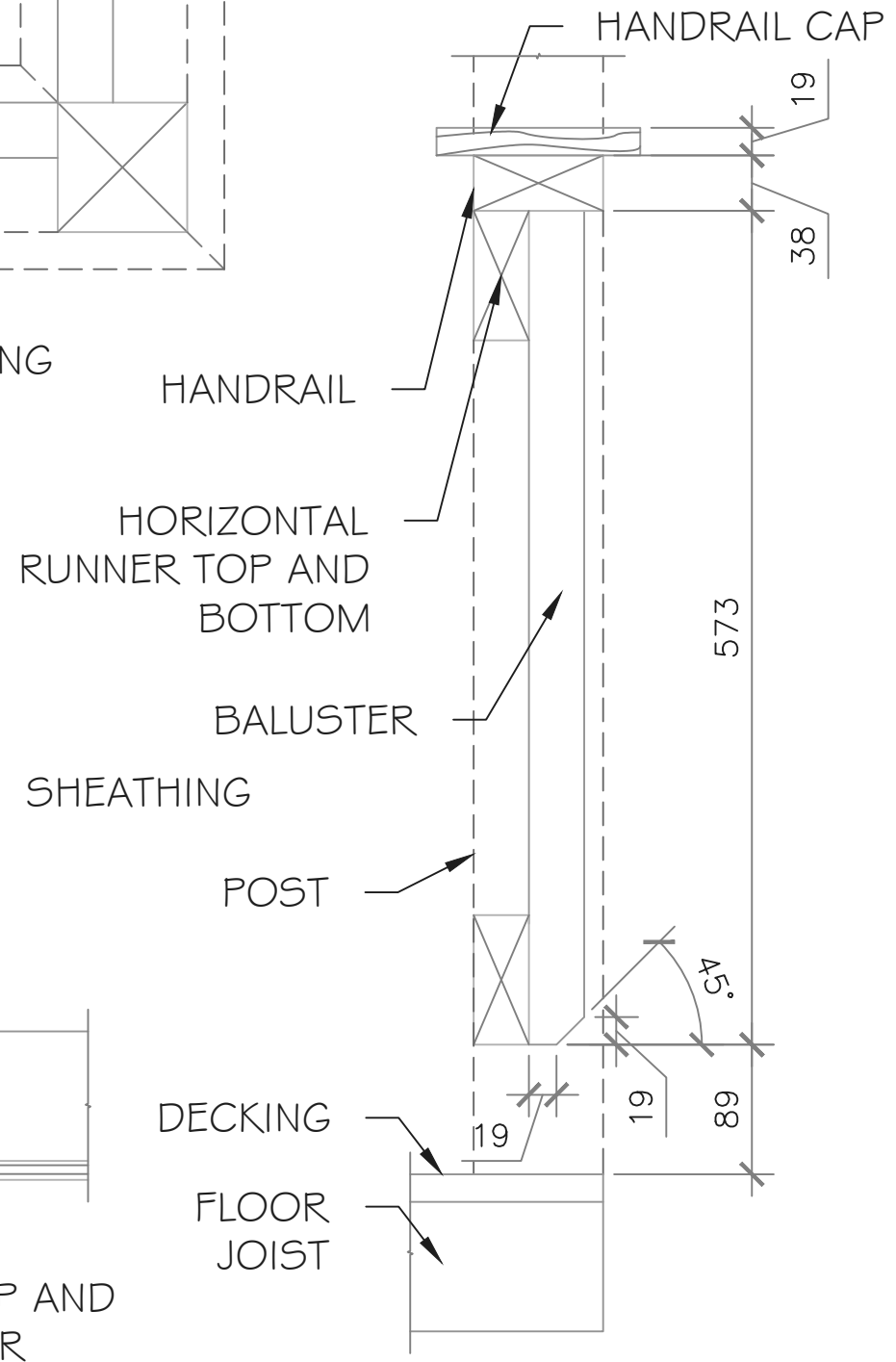
**General Notes**  
 FOR EDUCATIONAL PURPOSE ONLY  
 1) All handrail materials are cedar



1  
A4  
**FRONT RAILING PLAN**



2  
A5  
**SIDE RAILING PLAN**



3  
A4  
**BALUSTER SECTION**

No.	Revision/Issue	Date
9	REVISIONS	SEPT. 12
...	...	...
2	REVISIONS	DEC.12
1	DRAFT	NOV. 19

**SKILLS CANADA**

CARPENTRY POST SECONDARY

DETAILS VERSION 2

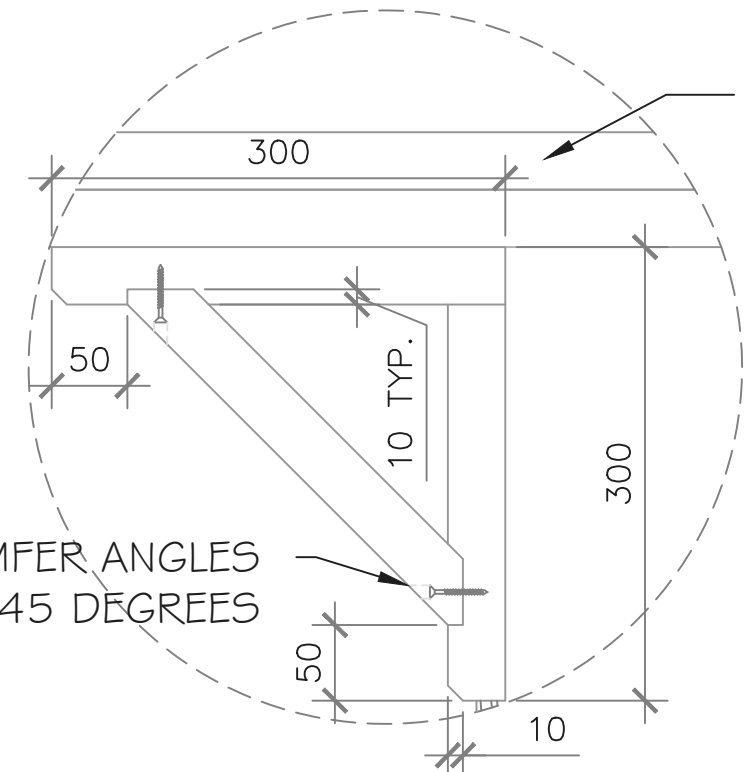
DRAWN BY: I. DU PLESSIS	SHEET #
DATE: SCNC2020	A9
SCALE: AS NOTED	



DOCUMENT USE

General Notes  
FOR EDUCATIONAL  
PURPOSE ONLY

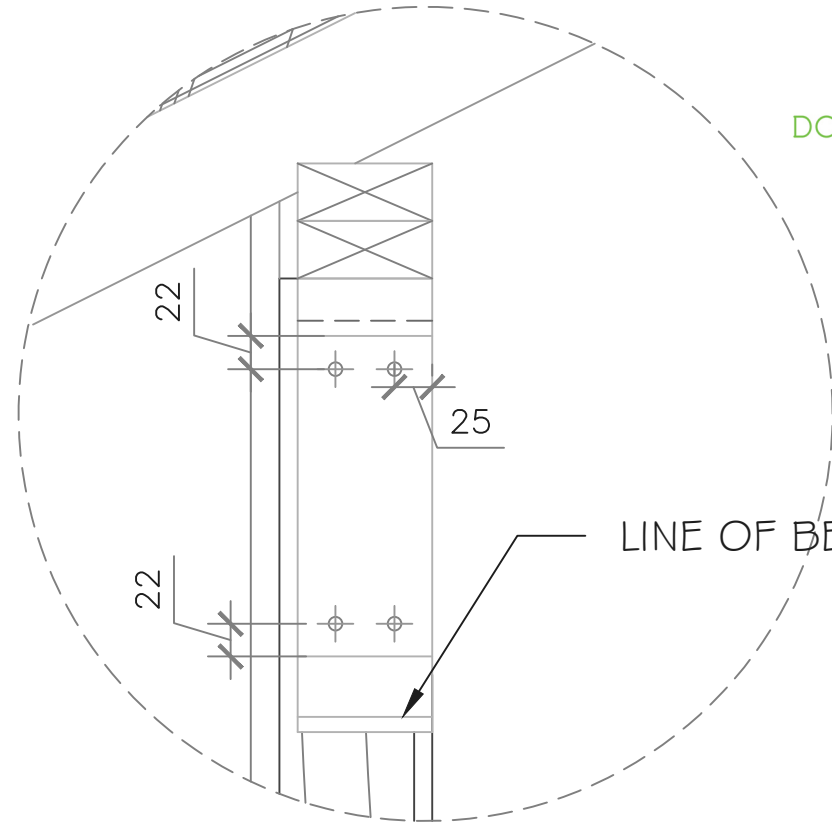
1)



TOP PLATES TO EXTEND  
BEYOND WALL  
BEARING ON POST

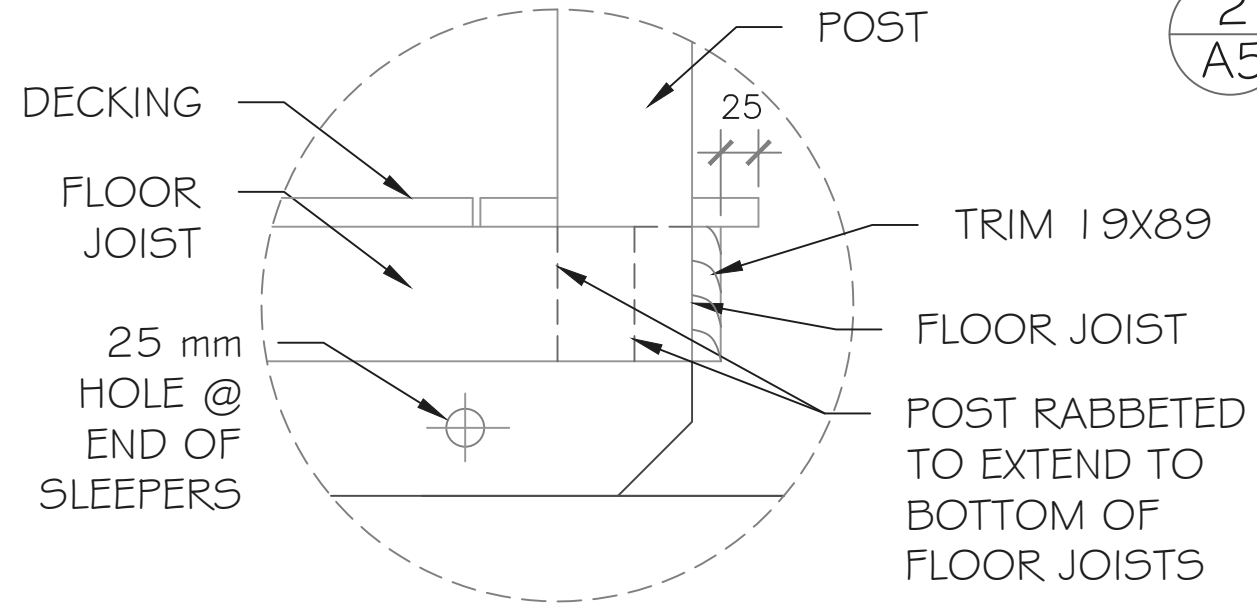
CHAMFER ANGLES  
AT 45 DEGREES

1 ARCHITECTURAL BRACKET DETAIL-A  
A5

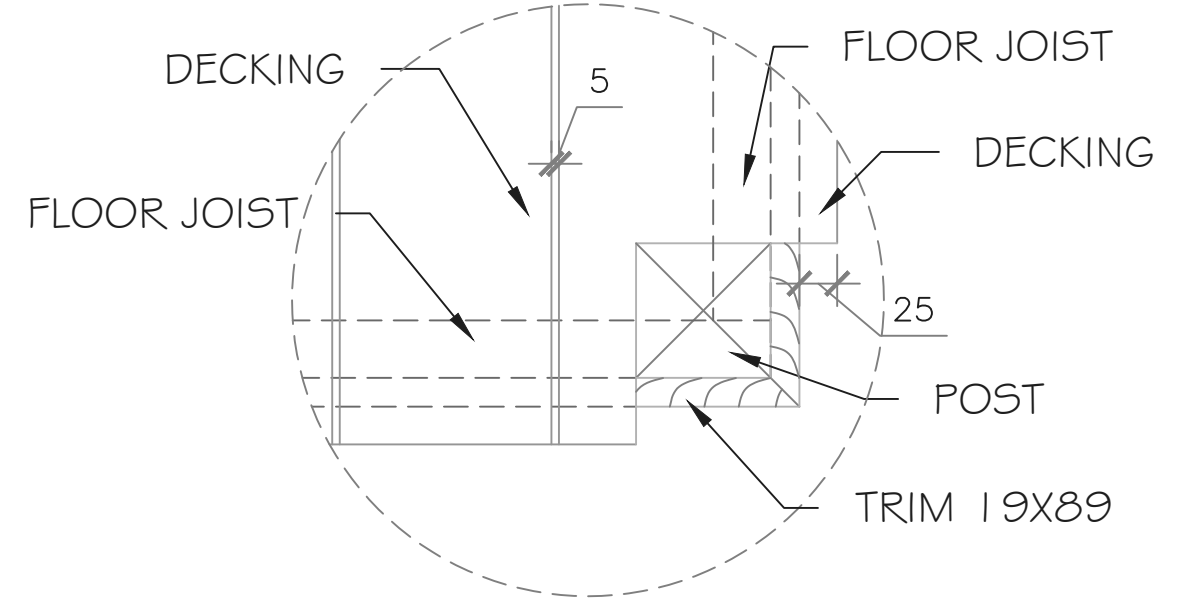


LINE OF BEVEL

2 ARCHITECTURAL BRACKET DETAIL-B  
A5



3 FLOOR JOISTS AT FRONT POSTS  
A4



4 DECKING AT FLOOR JOISTS  
A3

No.	Revision/Issue	Date
9	REVISIONS	SEPT. 12
...	...	...
2	REVISIONS	DEC.12
1	DRAFT	NOV. 19

SKILLS  
CANADA

CARPENTRY  
POST  
SECONDARY

DETAILS  
VERSION 2

DRAWN BY: I. DU PLESSIS	SHEET #
DATE: SCNC2020	A10
SCALE: AS NOTED	