

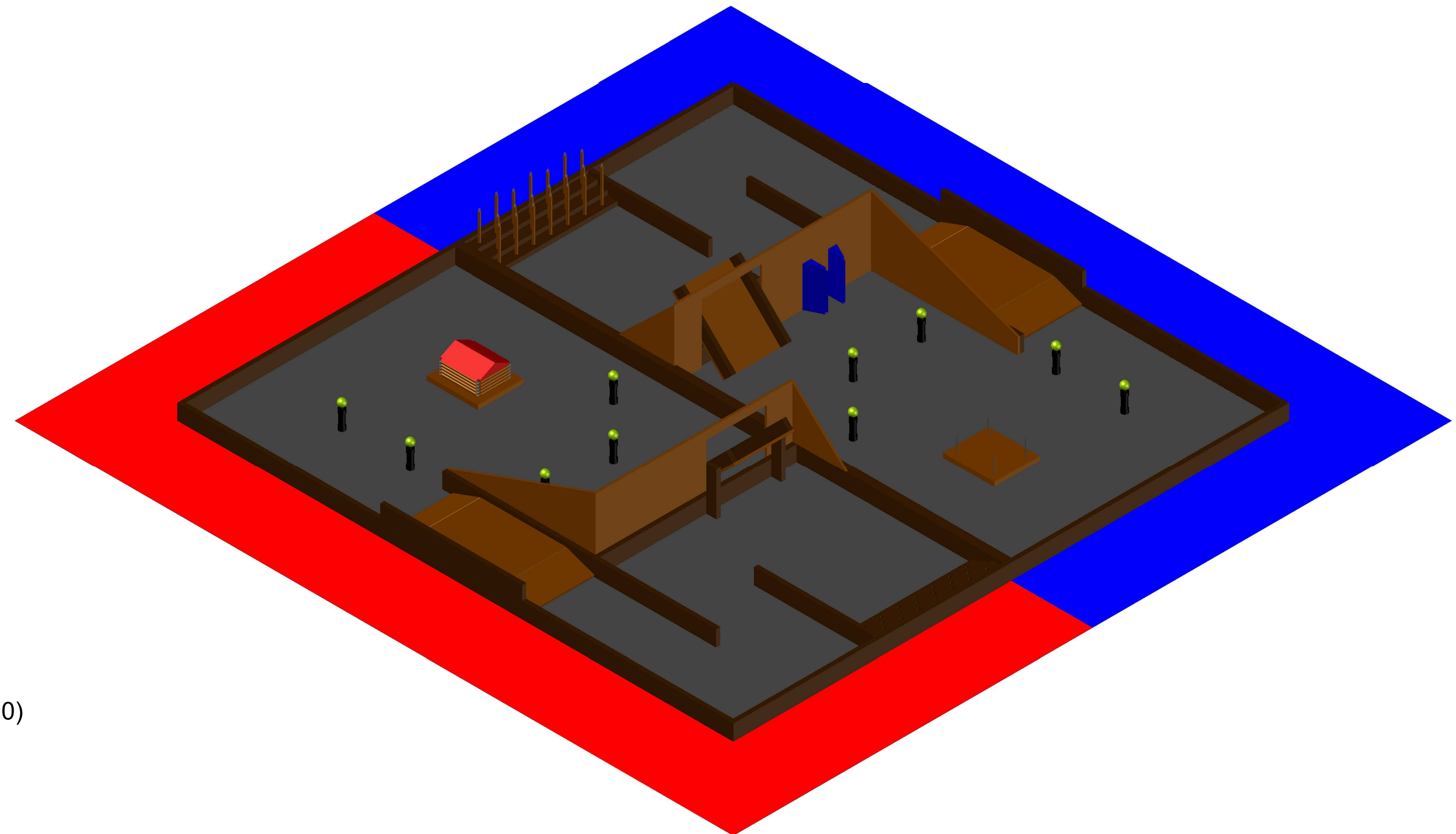
2021 SKILLS CANADA NATIONAL
ROBOTICS COMPETITION

QUEBEC CITY, QUEBEC, CANADA

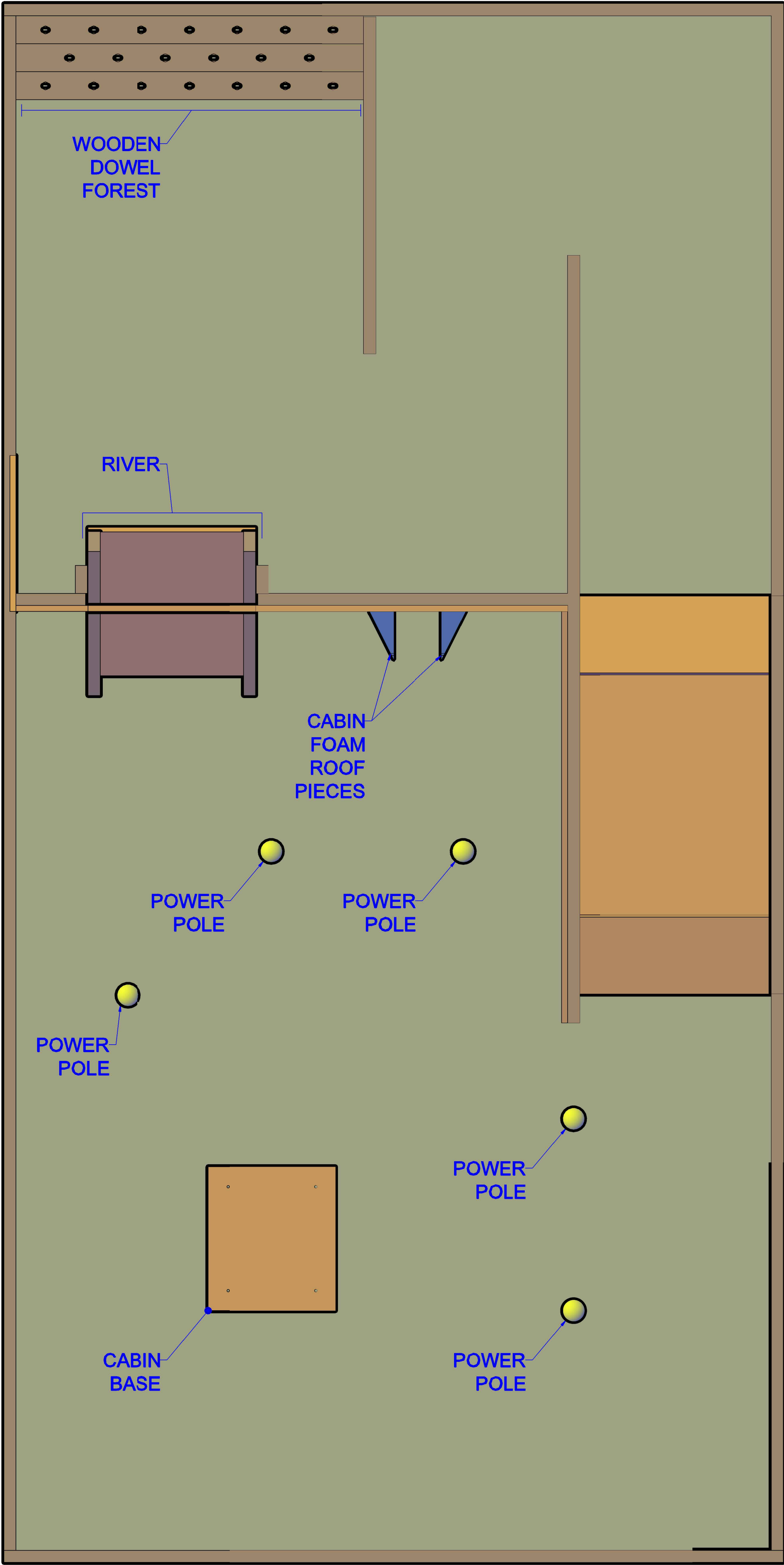
APPENDIX A: COURT AREA DIMENSIONS
AND DETAILS - ISO A1 SIZE

DRAWING INDEX		
SHEET NO.	DWG. TITLE	DWG. NO.
0	COVER SHEET	SC-ROB-0
1	COURT AREA DIMENSIONS	SC-ROB-1
2	MATERIAL CUT SHEET LABELS	SC-ROB-2
3	MATERIAL CUT SHEET	SC-ROB-3
4	SMALL PART DETAILS	SC-ROB-4

ISSUED FOR SCOPE DOCUMENT: JULY 27TH, 2020 (REV. 0)

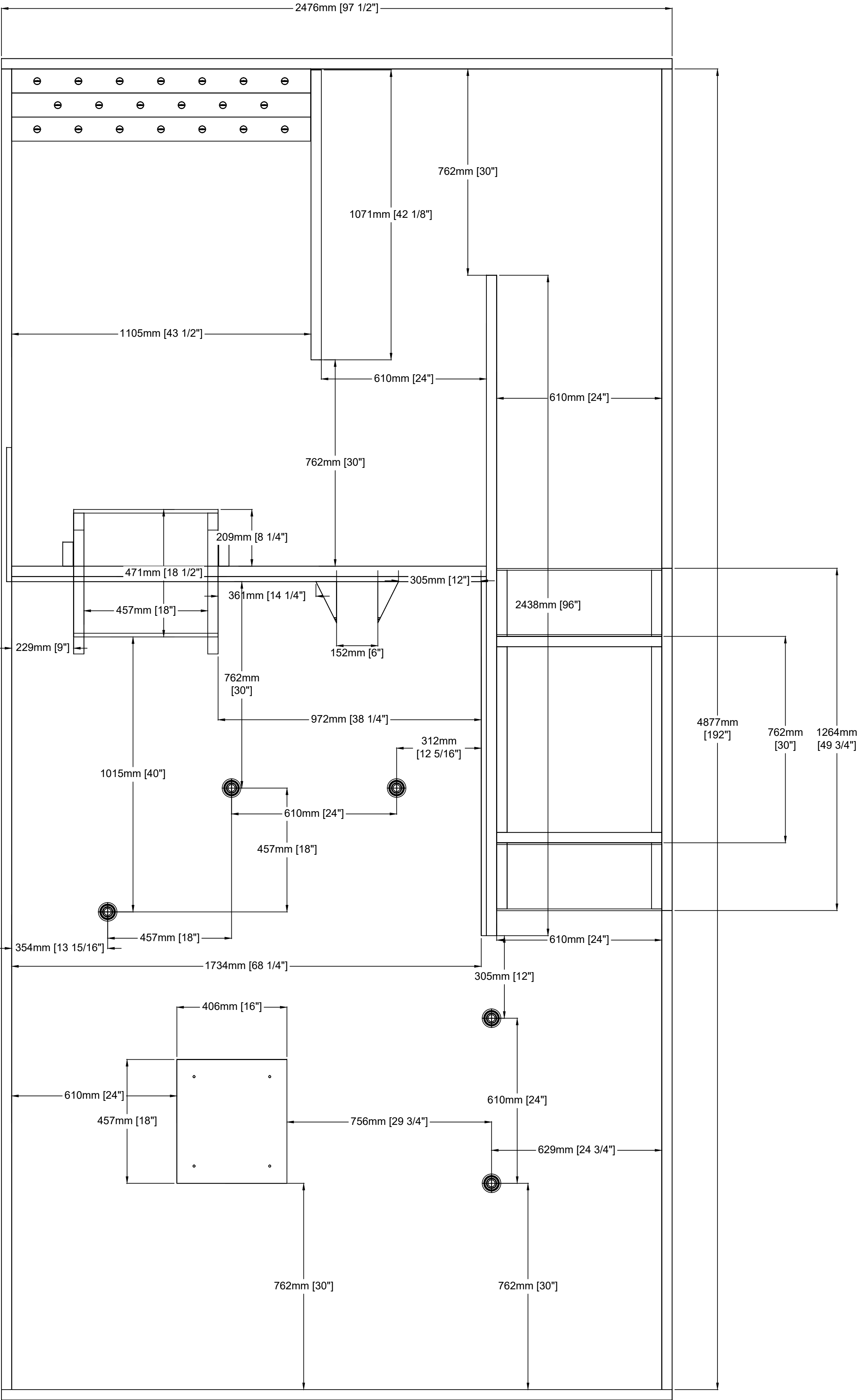


① OVERALL COURT AREA
SCALE = N/A



1 COURT LAYOUT
SCALE = 1:10 (ON ISO A1 SHEET)

1:10
200mm 0mm 200mm 400mm



2 COURT DIMENSIONS
SCALE = 1:10 (ON ISO A1 SHEET)

1:10
200mm 0mm 200mm 400mm

- Notes:**
- ALL MATERIALS LISTED ON ALL DRAWINGS (SC-ROB-1, SC-ROB-2, SC-ROB-3, AND SC-ROB-4) REPRESENT INFORMATION AND DIMENSIONS FOR A SINGLE COURT AREA, REPRESENTING A SINGLE TEAMS SIDE OF THE COMPETITION FLOOR SPACE. TO BUILD A FULL COURT REPRESENTING 2 TEAM COURT AREAS, MULTIPLY MATERIAL QUANTITIES BY 2.
 - SEE DRAWING SC-ROB-04 FOR DIMENSION DETAILS ON SMALLER COURT PIECES, INCLUDING THE FOAM PIECES, UTILITY POLES, AND HOUSE BASE BOLTS.

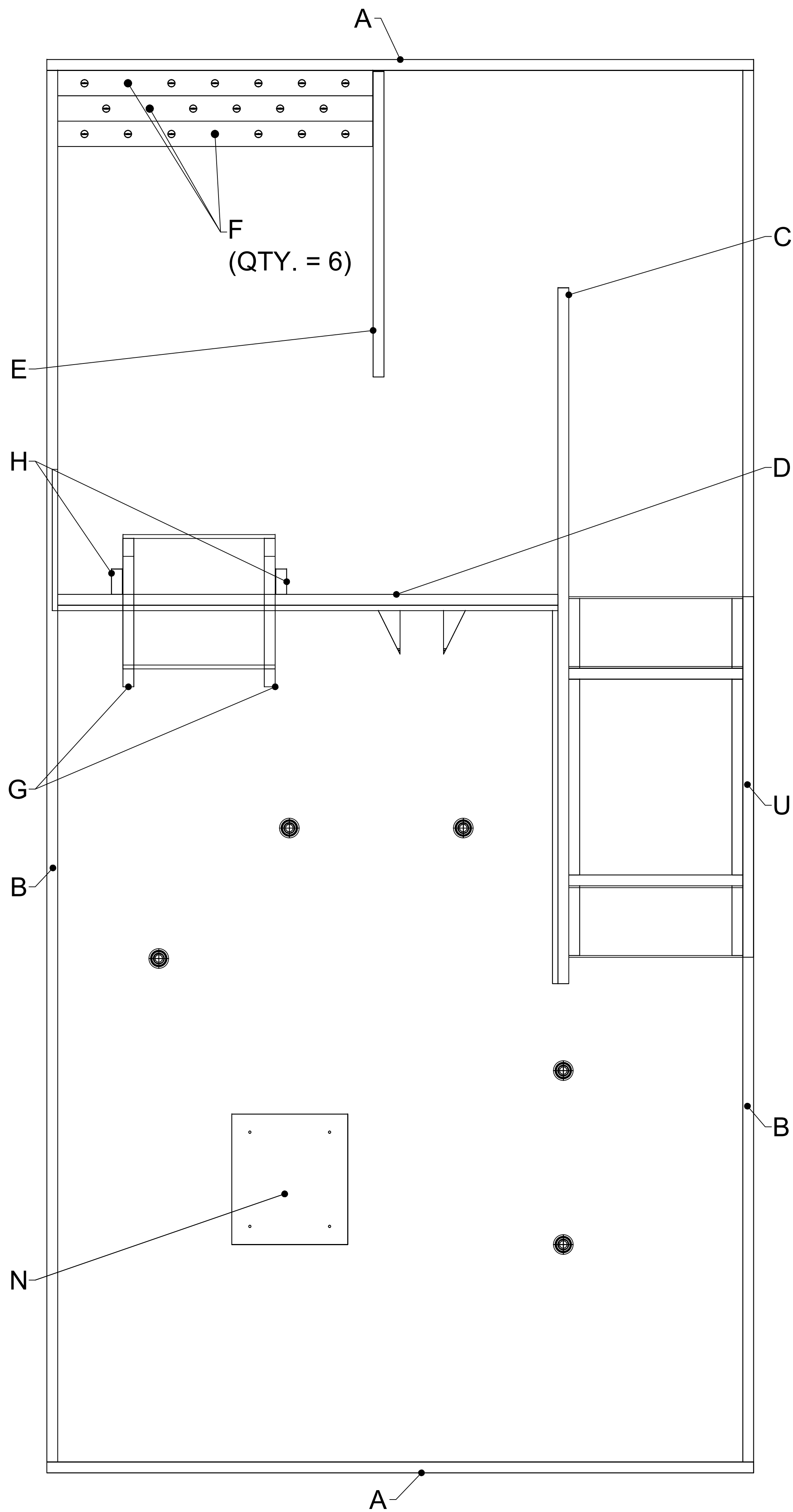
-	-	-	-
-	-	-	-
0	ISSUED FOR SCOPE DOCUMENT	SM	JUL. 27/20

REV: 0	DESCRIPTION:	BY:	DATE:
STATUS: NATIONAL SCOPE ISSUE			

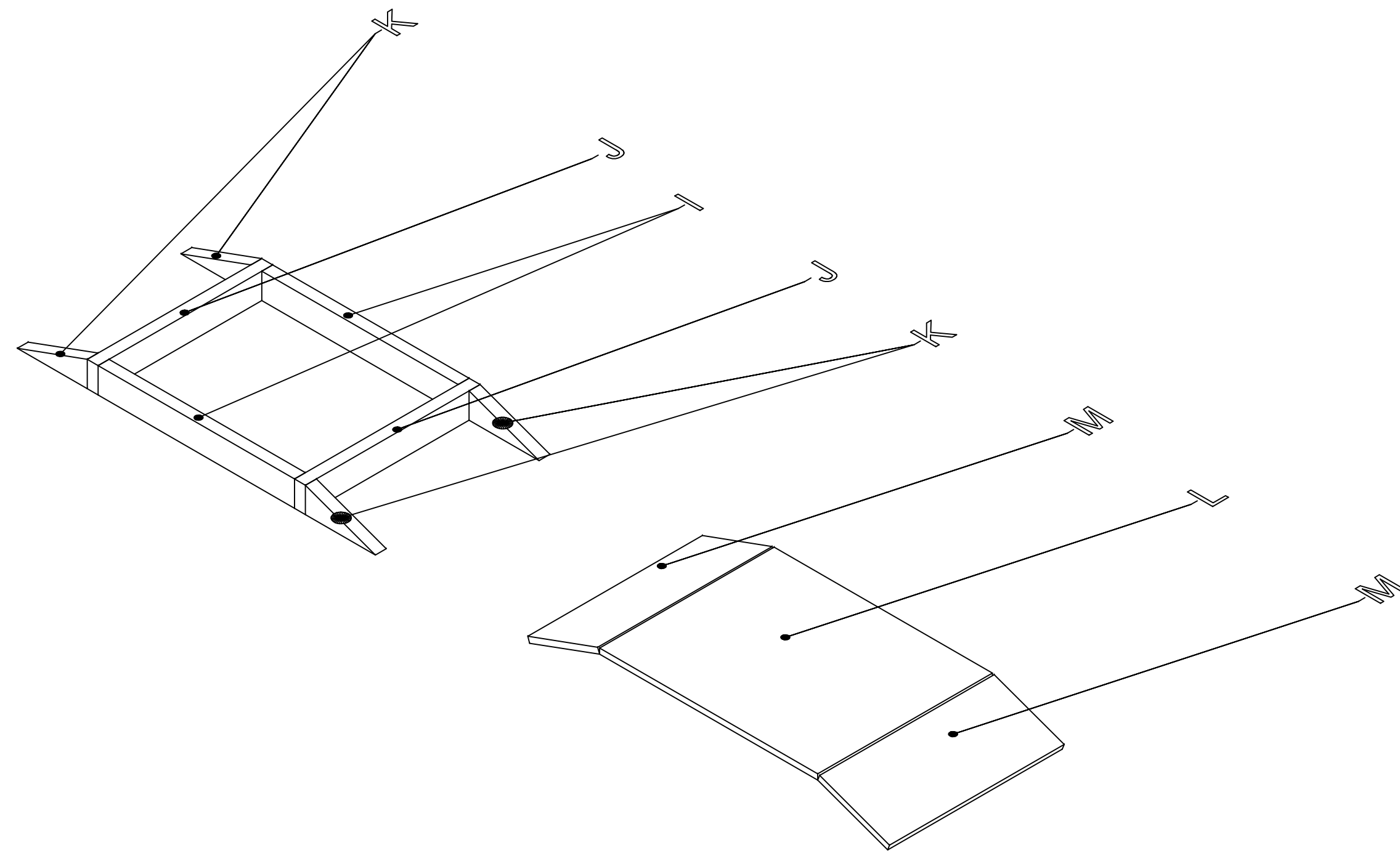
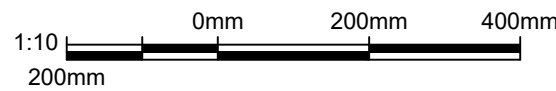
CLIENT: SKILLS CANADA			
-----------------------	--	--	--

TITLE: 2020 NATIONAL ROBOTICS COMPETITION COURT AREA DIMENSIONS			
---	--	--	--

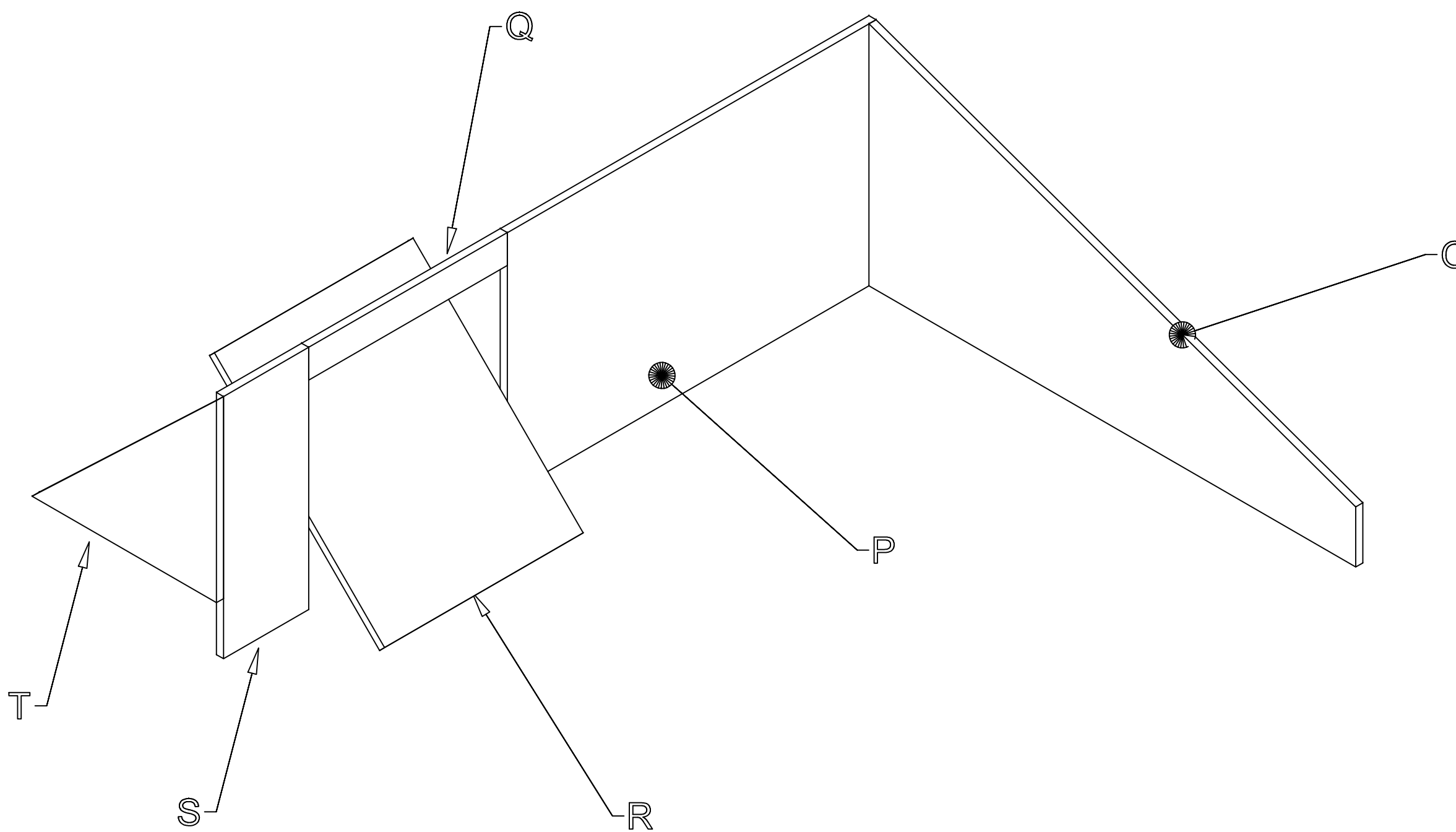
SCALE AT A1: AS NOTED	DATE: JUL. 27/20	DRAWN: SM	DESIGNED: NTC
PROJECT NO: -	DRAWING NO: SC-ROB-1	REVISION: 0	



1 COURT MATERIAL LABELLING
SCALE = 1:10 (ON ISO A1 SHEET)



2 RAMP MATERIAL LABELLING
SCALE = N/A



3 UPRIGHT PLYWOOD MATERIAL LABELLING
SCALE = N/A

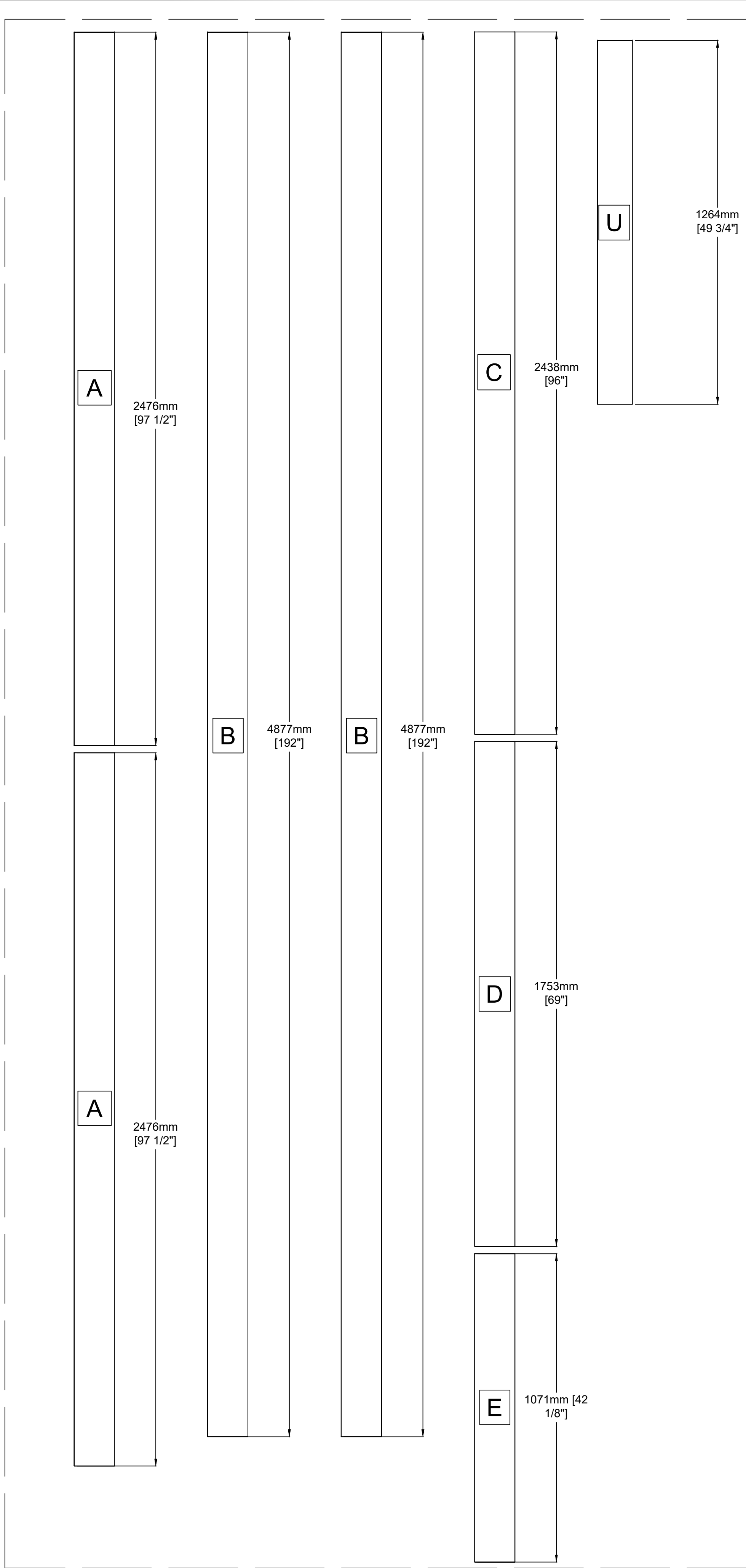
Notes:

1. ALL MATERIALS LISTED ON ALL DRAWINGS (SC-ROB-1, SC-ROB-2, SC-ROB-3, AND SC-ROB-4) REPRESENT INFORMATION AND DIMENSIONS FOR A SINGLE COURT AREA, REPRESENTING A SINGLE TEAMS SIDE OF THE COMPETITION FLOOR SPACE. TO BUILD A FULL COURT REPRESENTING 2 TEAM COURT AREAS, MULTIPLY MATERIAL QUANTITIES BY 2.

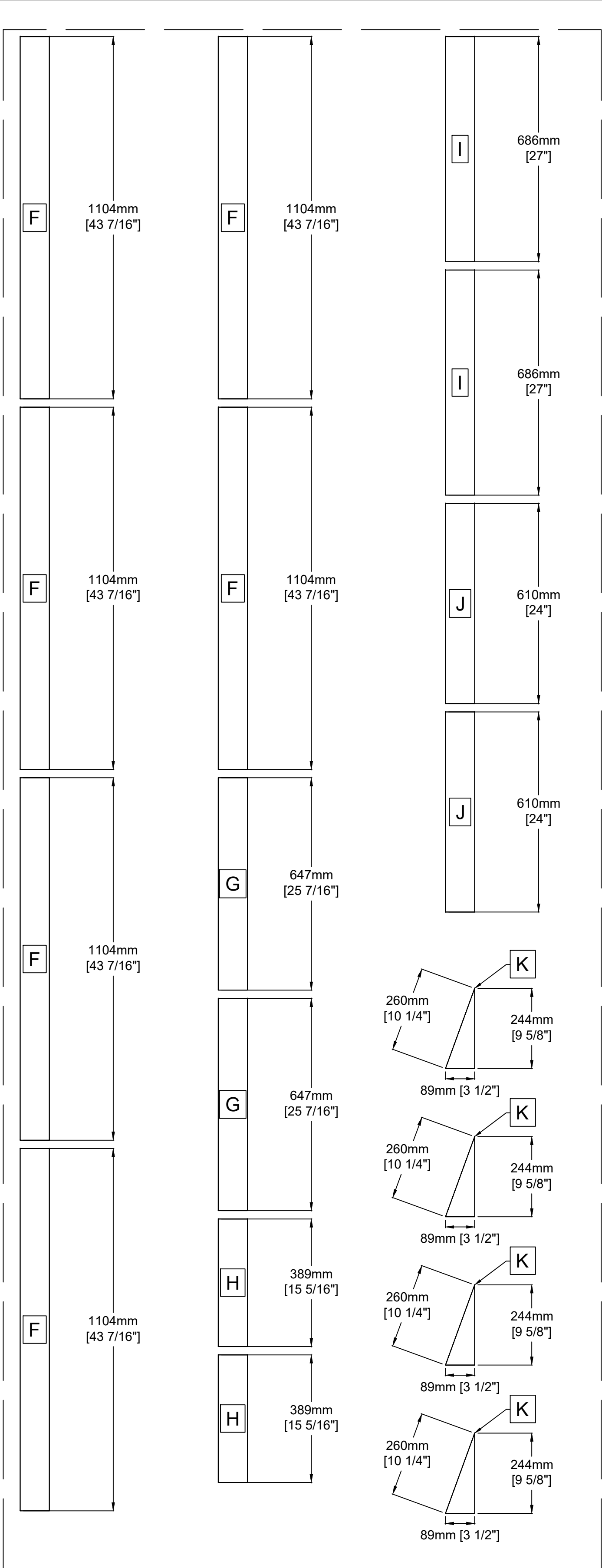
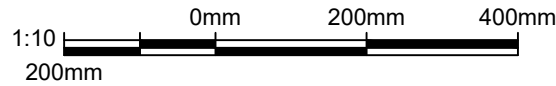
-	-	-	-
-	-	-	-
0	ISSUED FOR SCOPE DOCUMENT	SM	JUL. 27/20

REV: 0	DESCRIPTION:	BY:	DATE:
STATUS: NATIONAL SCOPE ISSUE			

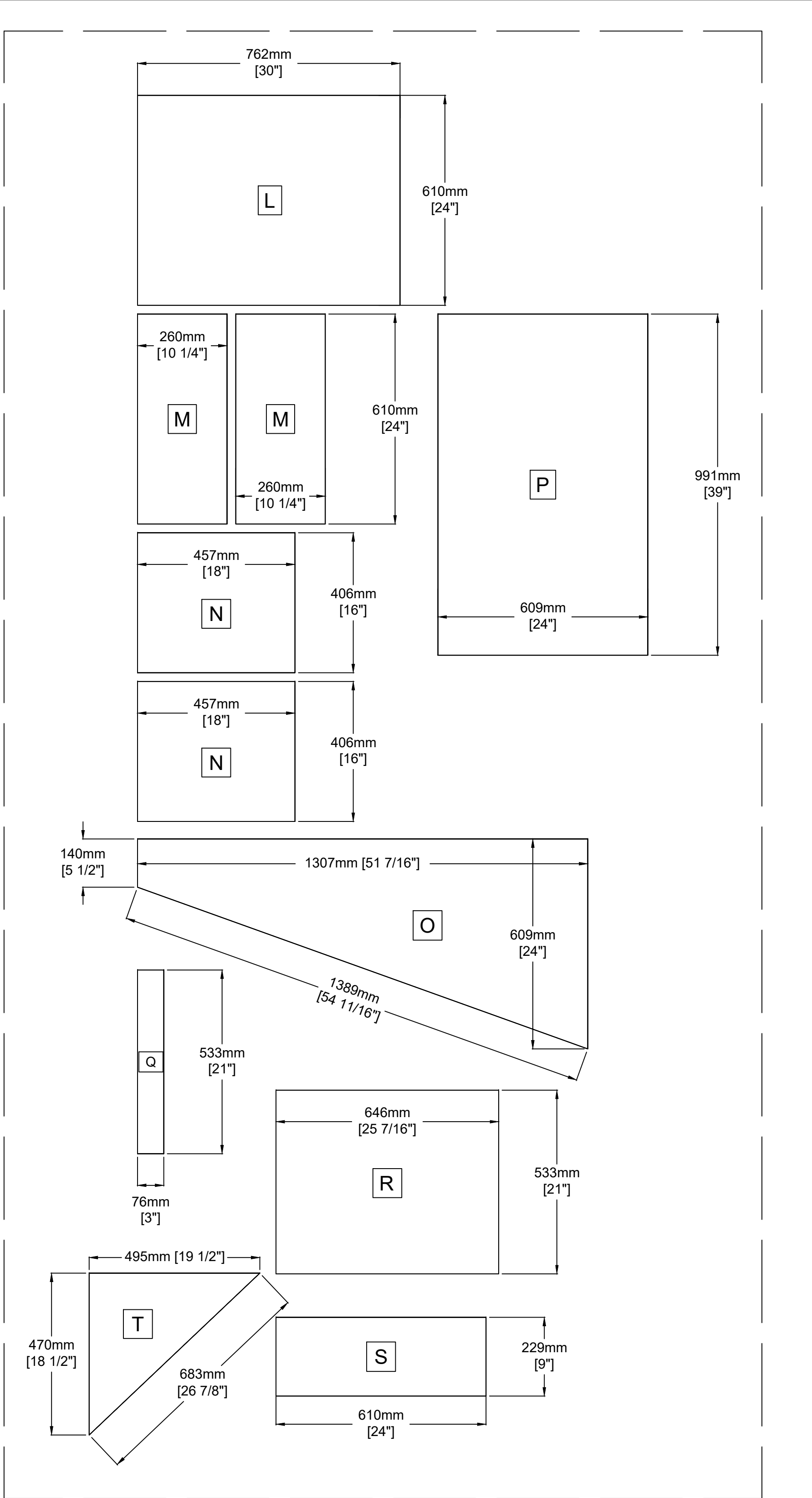
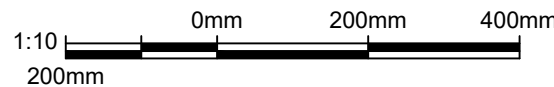
CLIENT: SKILLS CANADA			
TITLE: 2020 NATIONAL ROBOTICS COMPETITION MATERIAL CUT SHEET LABELS			
SCALE AT A1:	DATE:	DRAWN:	DESIGNED:
AS NOTED	JUL. 27/20	SM	NTC
PROJECT NO:	DRAWING NO:	REVISION:	
-	SC-ROB-2	0	



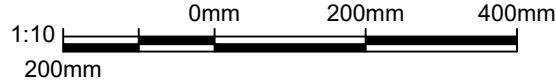
1 STANDARD 2x6" DIMENSIONS
SCALE = 1:10 (ON ISO A1 SHEET)



2 STANDARD 2x4" DIMENSIONS
SCALE = 1:10 (ON ISO A1 SHEET)



3 STANDARD 3/4" PLYWOOD DIMENSIONS
SCALE = 1:10 (ON ISO A1 SHEET)

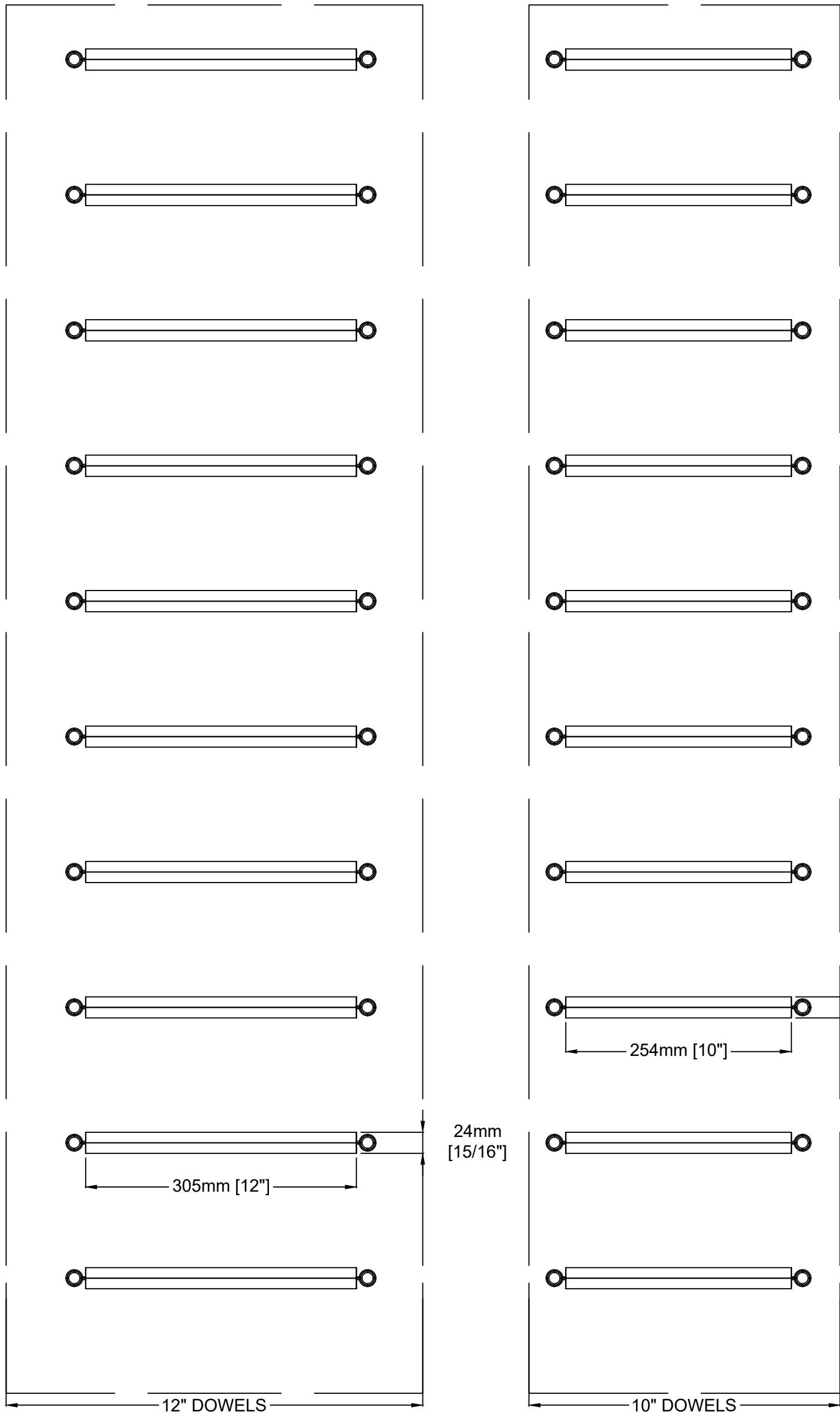


Notes:
1. ALL MATERIALS LISTED ON ALL DRAWINGS (SC-ROB-1, SC-ROB-2, SC-ROB-3, AND SC-ROB-4) REPRESENT INFORMATION AND DIMENSIONS FOR A SINGLE COURT AREA, REPRESENTING A SINGLE TEAMS SIDE OF THE COMPETITION FLOOR SPACE. TO BUILD A FULL COURT REPRESENTING 2 TEAM COURT AREAS, MULTIPLY MATERIAL QUANTITIES BY 2.

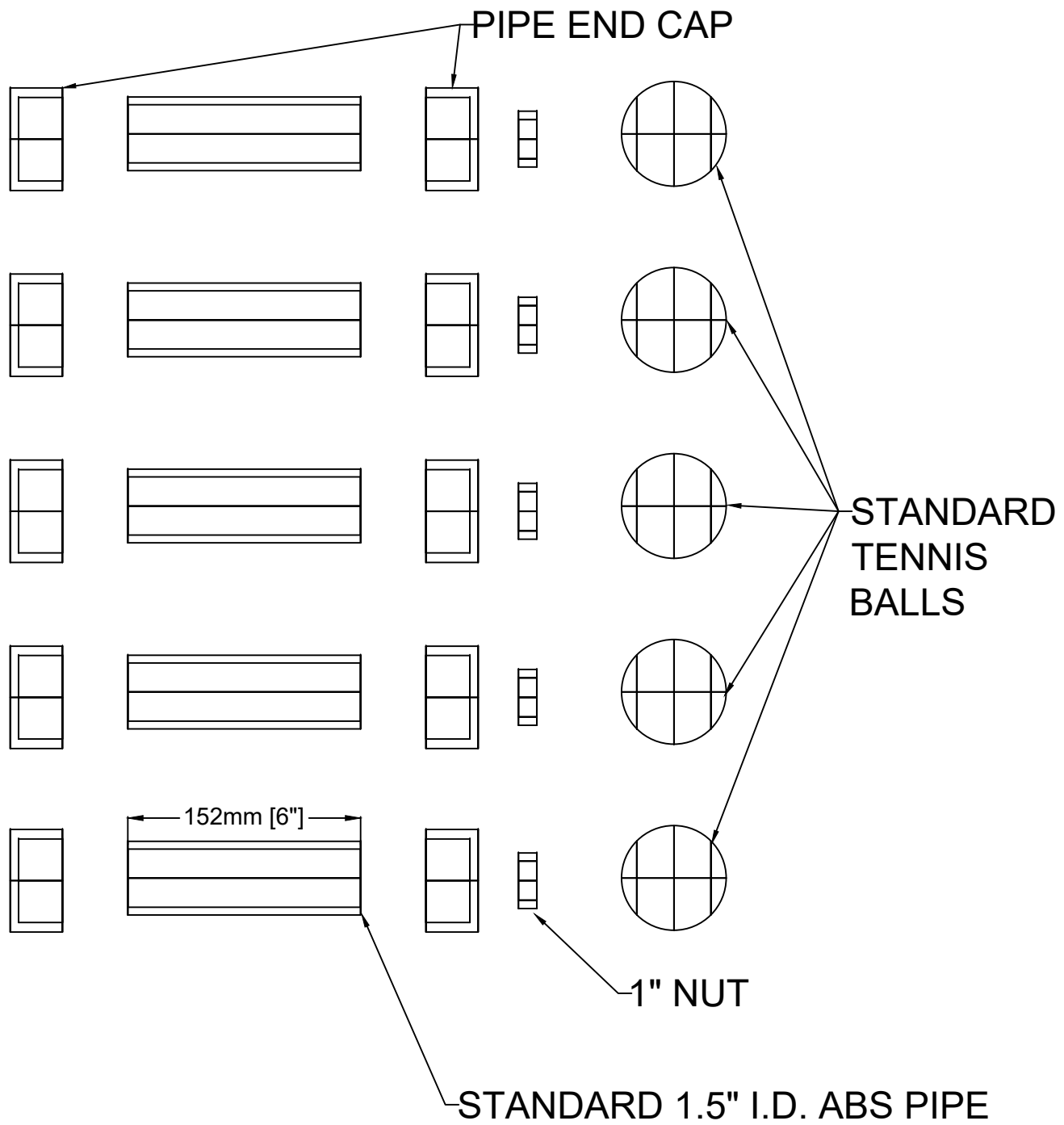
-	-	-	-
-	-	-	-
0	ISSUED FOR SCOPE DOCUMENT	SM	JUL. 27/20

REV: 0	DESCRIPTION:	BY:	DATE:
STATUS: NATIONAL SCOPE ISSUE			

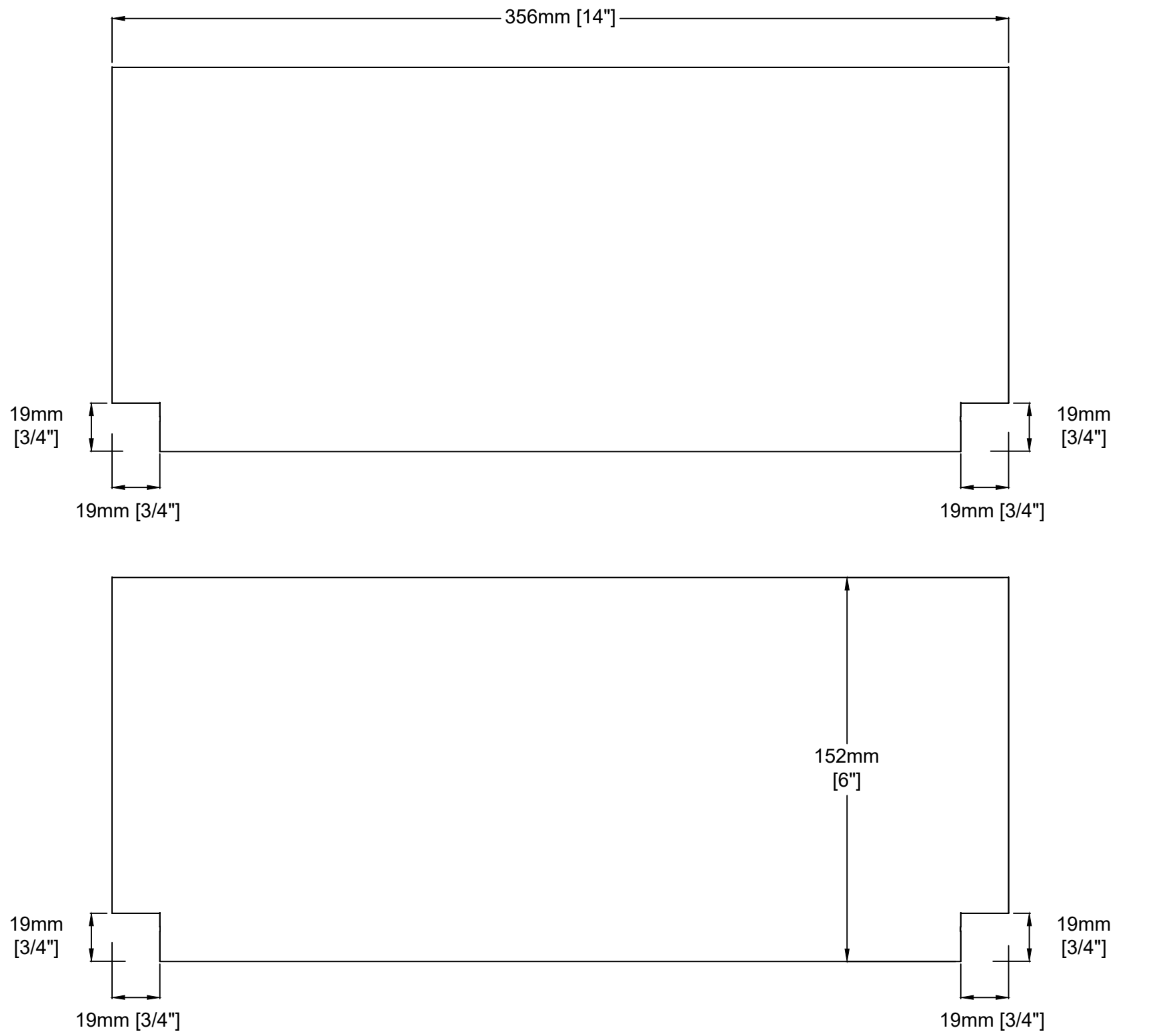
CLIENT: SKILLS CANADA			
TITLE: 2020 NATIONAL ROBOTICS COMPETITION MATERIAL CUT SHEET			
SCALE AT A1: AS NOTED	DATE: JUL. 27/20	DRAWN: SM	DESIGNED: NTC
PROJECT NO: -	DRAWING NO: SC-ROB-3	REVISION: 0	



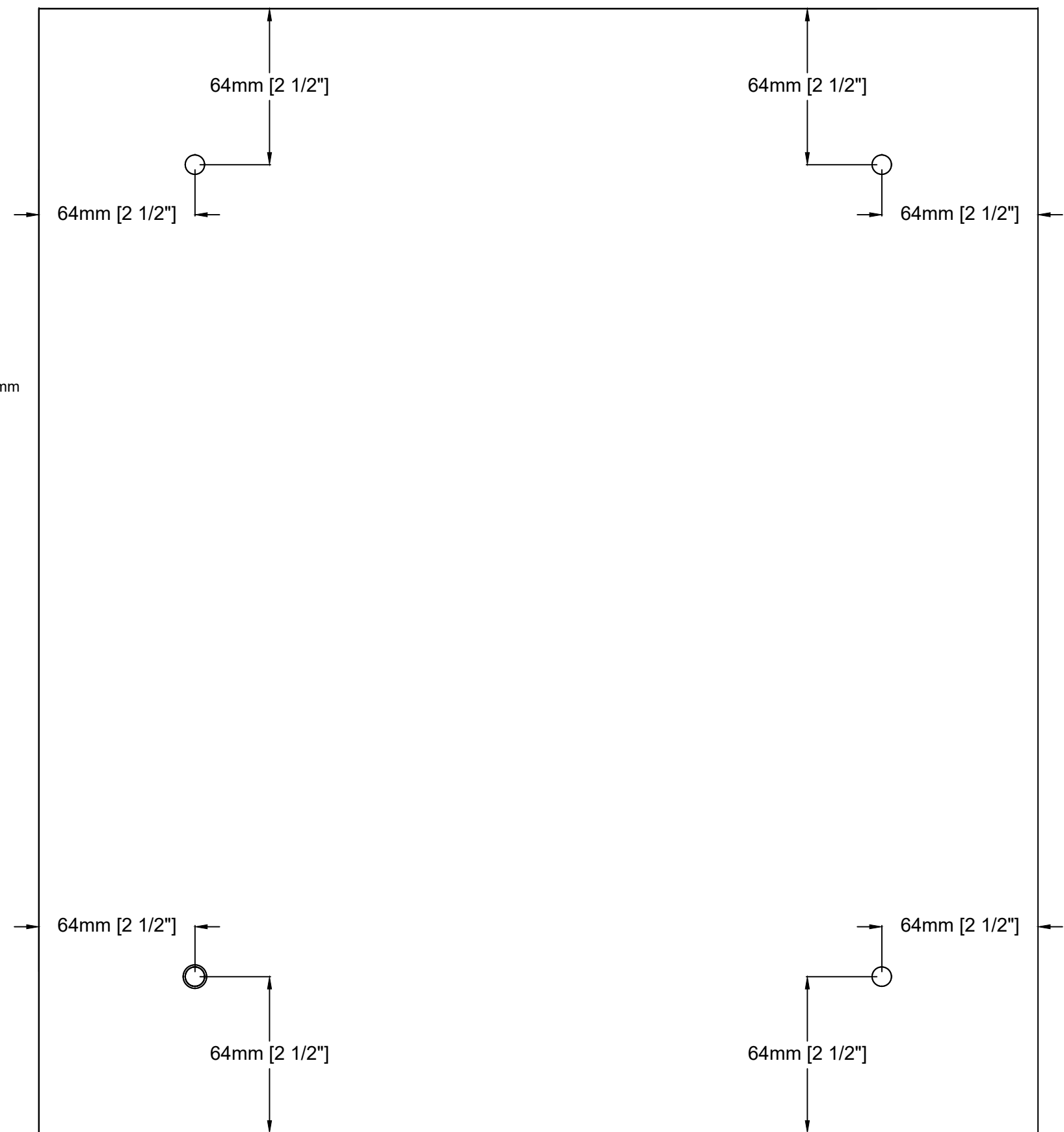
1 FOREST DOWEL DETAILS
SCALE = 1:5 (ON ISO A1 SHEET)



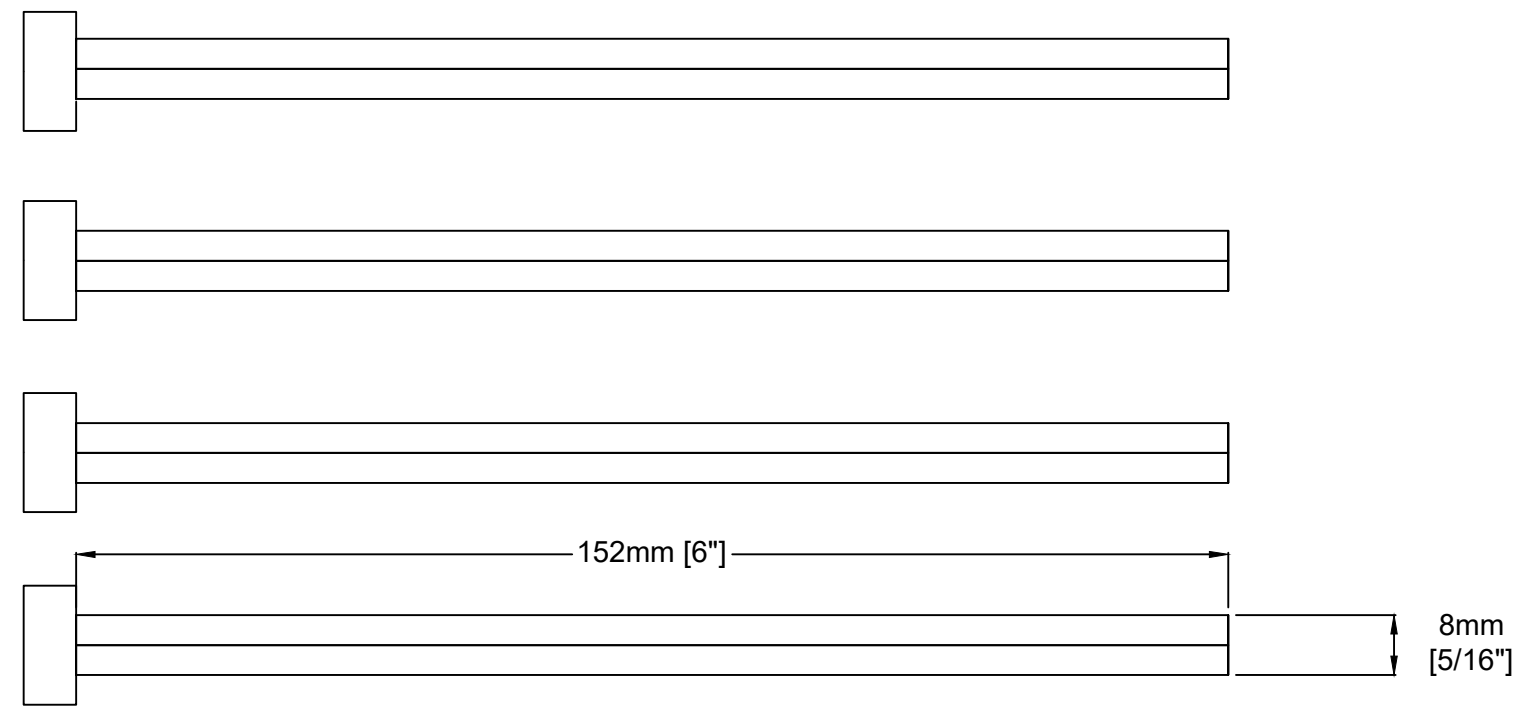
4 UTILITY POLE DETAILS
SCALE = 1:4 (ON ISO A1 SHEET)



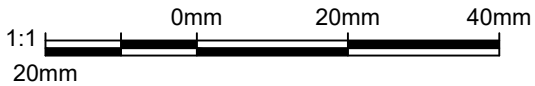
2 FOAM DETAILS
SCALE = 1:2 (ON ISO A1 SHEET)



5 HOUSE BASE DETAILS
SCALE = 1:2 (ON ISO A1 SHEET)



3 WOODEN BASE BOLTS
SCALE = 1:1 (ON ISO A1 SHEET)



2021 Skills National Robotics Competition: Bill of Materials (1 Court)			
Description	Model Description	Quantity	Web Url
Dowel Eye Hooks	Everbilt 1-5/8 Inch Zinc Large Screw Eye (8 Pack)	6	https://bit.ly/2EjSf5L
Wooden Dowels	Alexandria Moulding Hardwood Dowel	6	https://bit.ly/32YJqZv
Foam Insulation	Foamular C-200 Extruded Polystyrene Rigid Insulation	1	https://bit.ly/3hKWd65
Tennis Balls	Wilson Prime All Court Tennis Ball 4 Pack (12 Balls)	1	https://amzn.to/3jDSi0q
Power Pole Hex Nut	Steel Hex Nut, Zinc Plated Finish, Grade 5, 1"-8 Threads	1	https://amzn.to/2CX2b8q
2"x6" x 10' Wood	2" x 6" x 10' Standard SPF Dimension Lumber	4	https://bit.ly/306D9cx
2"x6" x 8' Wood	2" x 6" x 8' Standard SPF Dimension Lumber	5	https://bit.ly/2BzgyvA
2"x4" x 8' Wood	2" x 4" x 8' Standard SPF Dimension Lumber	6	https://bit.ly/2OZZstZ
3/4" x 4' x 8' Plywood	3/4" x 4' x 8' Standard Sheet of Plywood	2	https://bit.ly/3hE7LrF
ABS Pipe	1-1/2" x 12' Standard ABS Pipe	1	https://bit.ly/302NZQB
ABS Cap	1-1/2" ABS Slip On Test Cap	10	https://bit.ly/2BBYmWd

6 BILL OF MATERIALS
SCALE = N/A

Notes:

- ALL MATERIALS LISTED ON ALL DRAWINGS (SC-ROB-1, SC-ROB-2, SC-ROB-3, AND SC-ROB-4) REPRESENT INFORMATION AND DIMENSIONS FOR A SINGLE COURT AREA, REPRESENTING A SINGLE TEAMS SIDE OF THE COMPETITION FLOOR SPACE. TO BUILD A FULL COURT REPRESENTING 2 TEAM COURT AREAS, MULTIPLY MATERIAL QUANTITIES BY 2.

-	-	-	-
-	-	-	-
0	ISSUED FOR SCOPE DOCUMENT	SM	JUL 27/20

REV: 0	DESCRIPTION:	BY:	DATE:
STATUS: NATIONAL SCOPE ISSUE			

CLIENT: SKILLS CANADA			
TITLE: 2020 NATIONAL ROBOTICS COMPETITION MATERIAL CUT SHEET			
SCALE AT A1: AS NOTED	DATE: JUL. 27/20	DRAWN: SM	DESIGNED: NTC
PROJECT NO: -	DRAWING NO: SC-ROB-4	REVISION: 0	