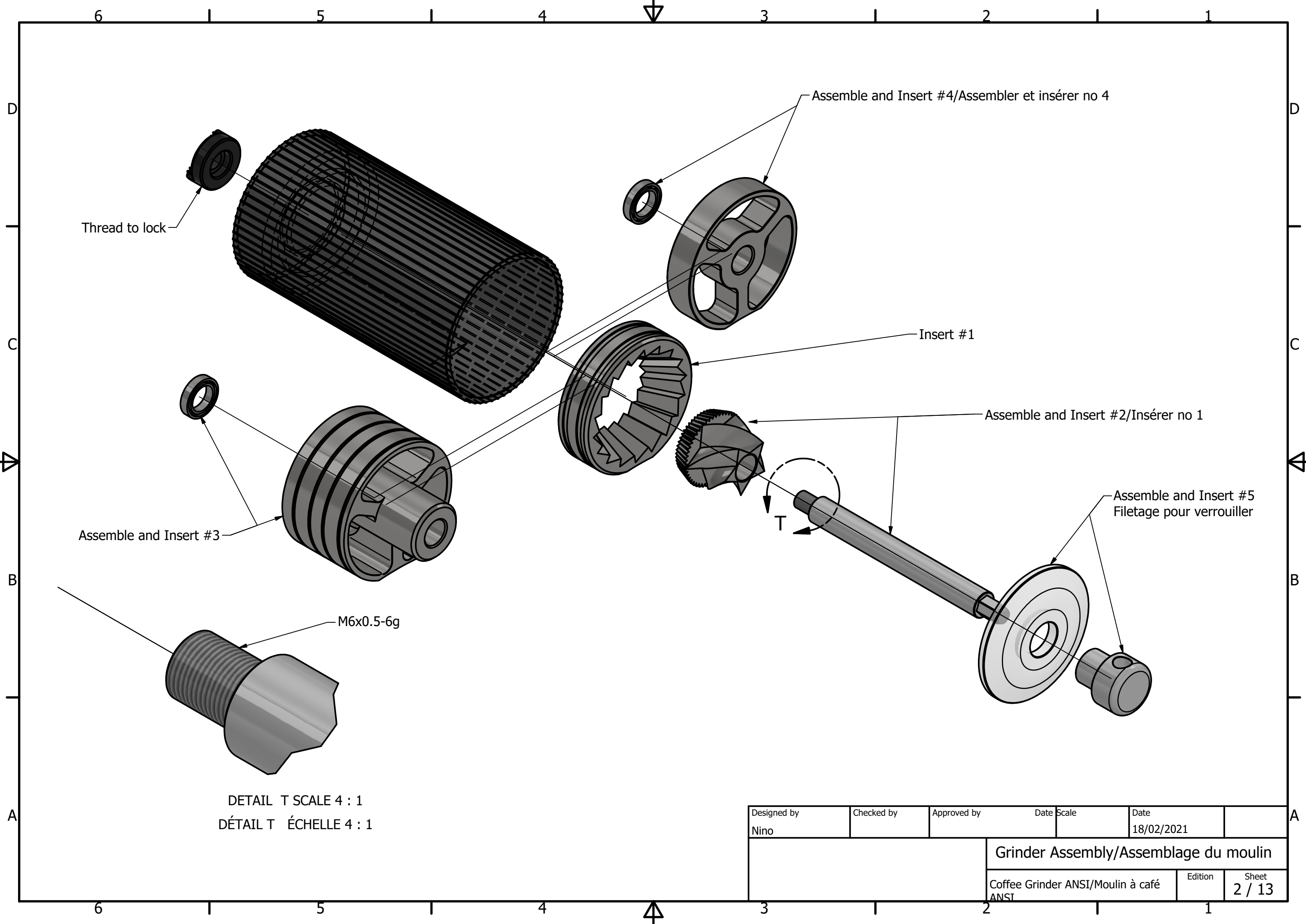
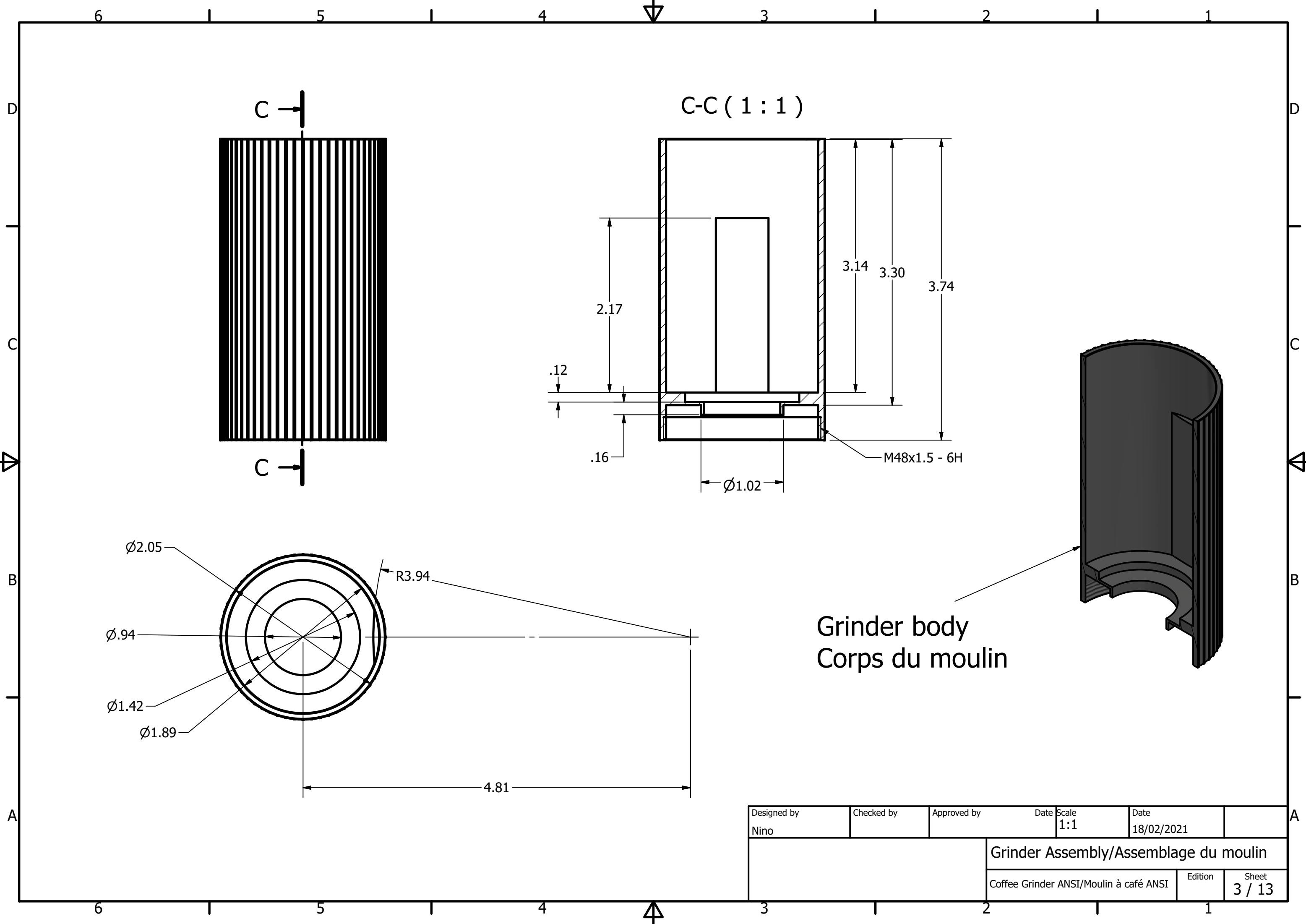


PARTS LIST/LISTE DES PIÈCES		
ITEM/ARTICLE	QTY/QTÉ	PART NUMBER/NUMÉRO DE PIÈCE
1	1	Grinder body/Corps du moulin
2	1	Grinder mill body/Broyeur du moulin
3	1	Grinder mill rotor/Rotor du broyeur
4	1	Grinder mill hopper/Témie du broyeur
5	1	Grinder mill top hopper/Trémis supérieure du broyeur
6	1	GrinderShaft/Arbre du moulin
7	1	Grinder Lid/Couvercle du moulin
8	1	Grinder Handle cap/Capuchon de la poignée
9	1	Grinder Locknut/Contré-écrou du moulin
10	1	Grinds Cup/tasse à monture
11	1	Handle/Poignée
12	1	Knob/Bouton
13	2	JIS B 1521 - 679 9x14x3

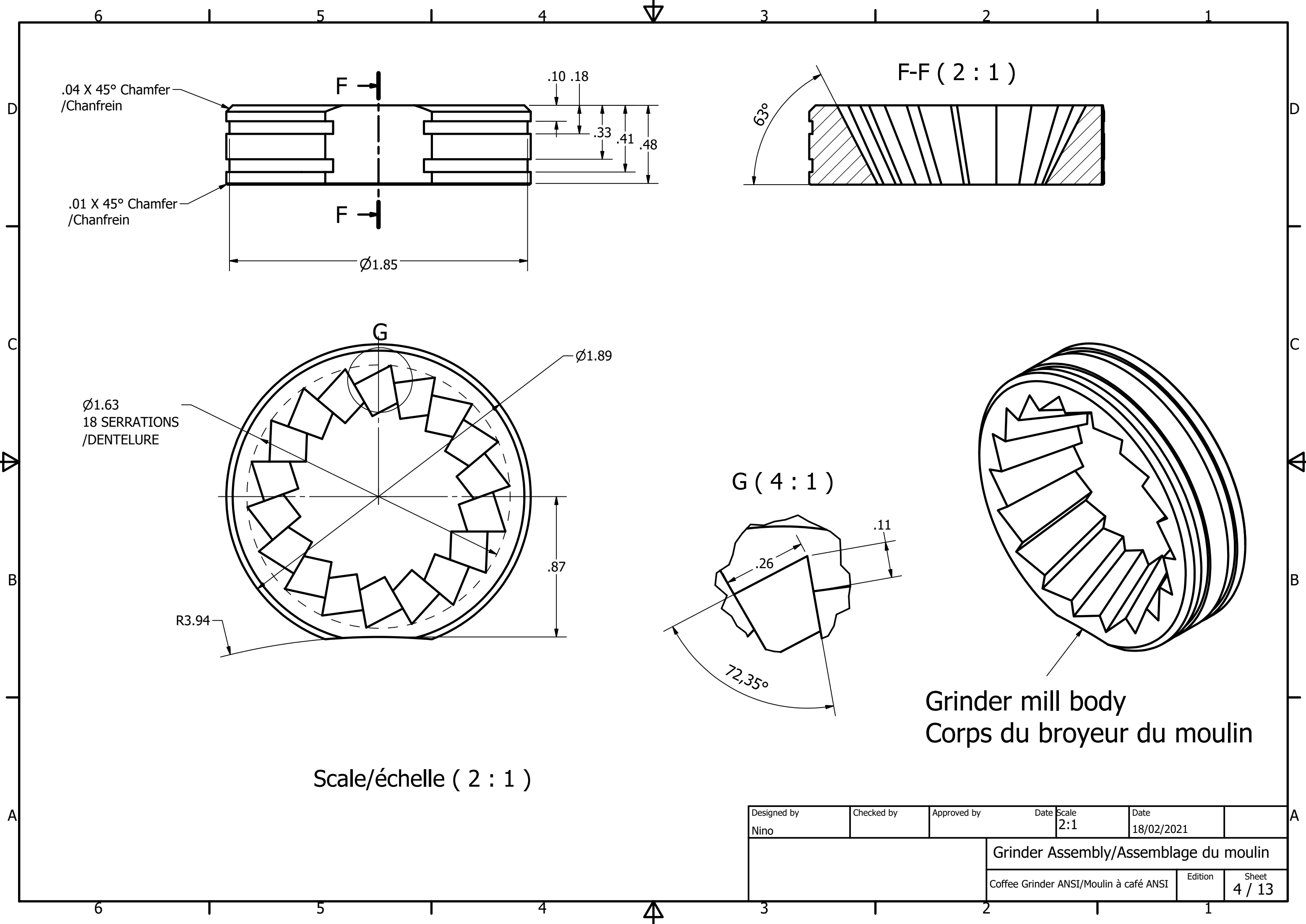
Designed by Nino	Checked by	Approved by	Date 18/02/2021	Scale 1:1	Date 18/02/2021
			Grinder Assembly/Assemblage du moulin		
			Coffee Grinder ANSI/Moulin à café ANSI	Edition	Sheet 1 / 13



Designed by Nino	Checked by	Approved by	Date 18/02/2021	Scale	
			Grinder Assembly/Assemblage du moulin		
			Coffee Grinder ANSI/Moulin à café ANSI	Edition	Sheet 2 / 13



Designed by Nino	Checked by	Approved by	Date 18/02/2021	Scale 1:1	Date 18/02/2021	
			Grinder Assembly/Assemblage du moulin			
			Coffee Grinder ANSI/Moulin à café ANSI		Edition	Sheet 3 / 13



Designed by Nino	Checked by	Approved by	Date 18/02/2021	Scale 2:1	Date 18/02/2021	
			Grinder Assembly/Assemblage du moulin			
			Coffee Grinder ANSI/Moulin à café ANSI	Edition	Sheet 4 / 13	

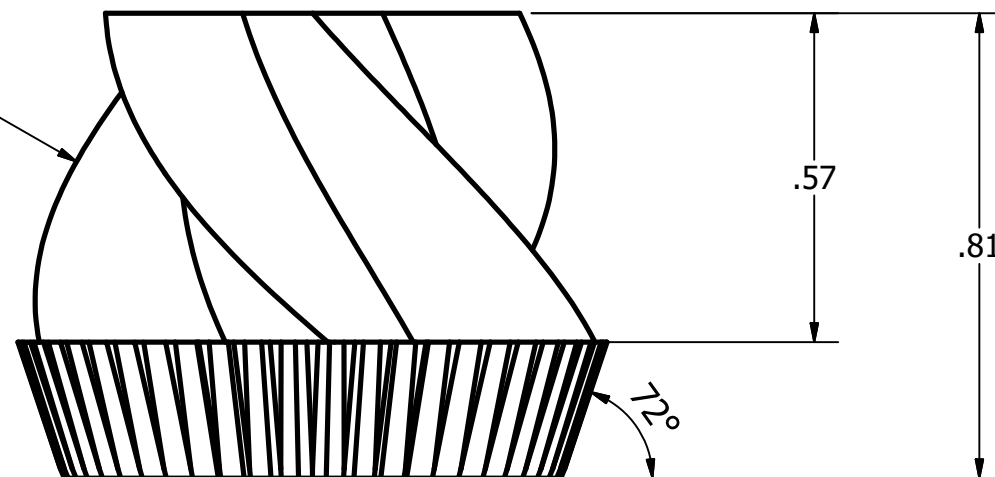
D

C

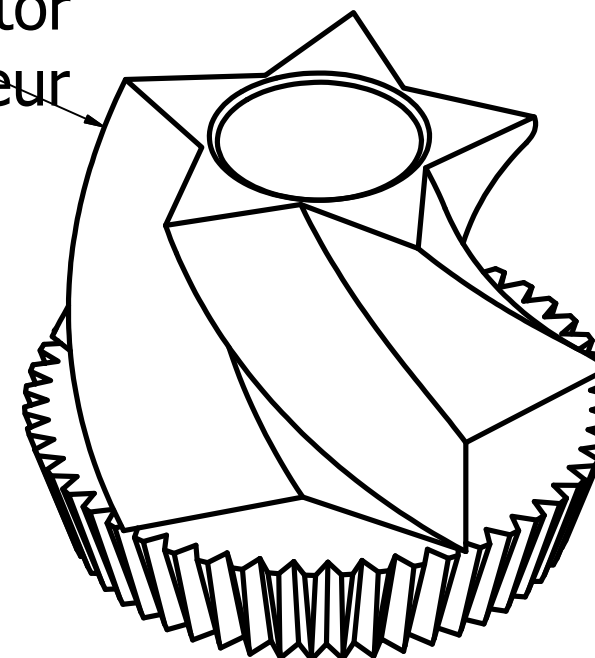
B

A

75° TWIST
/SPIRALE



Grinder mill rotor
Rotor du broyeur
du moulin

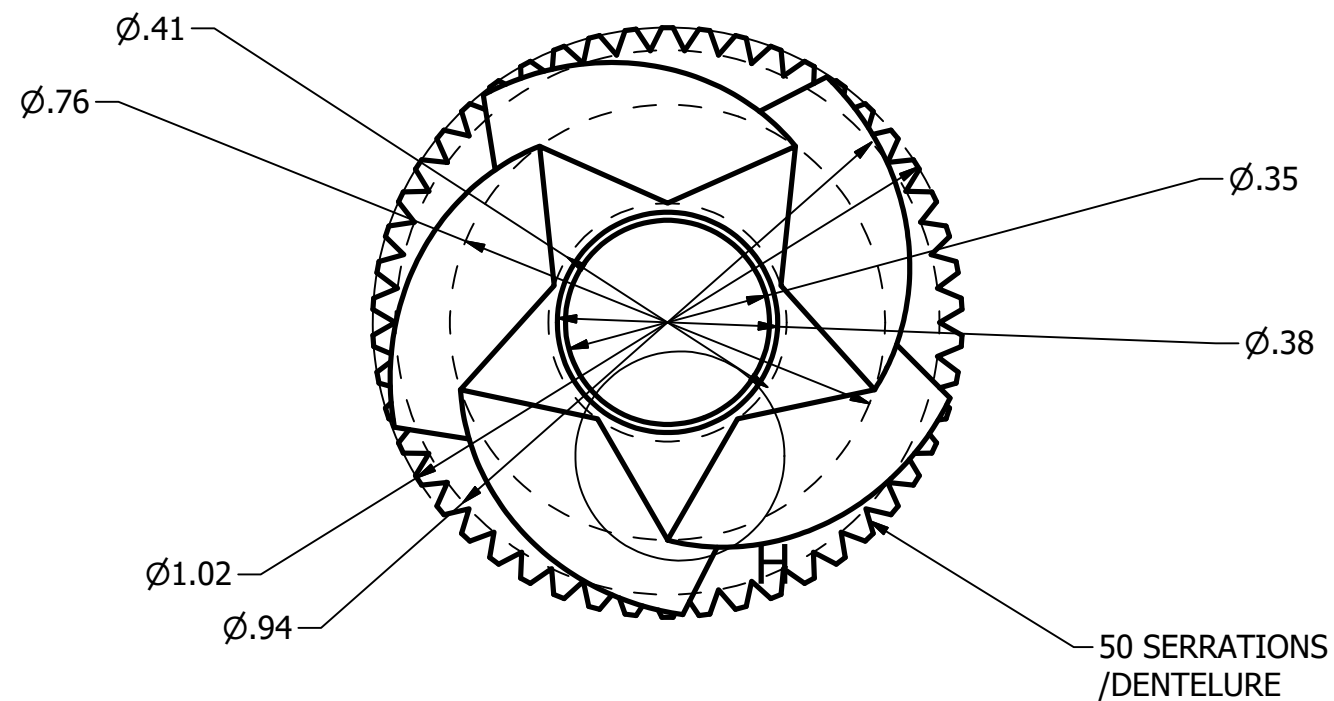


D

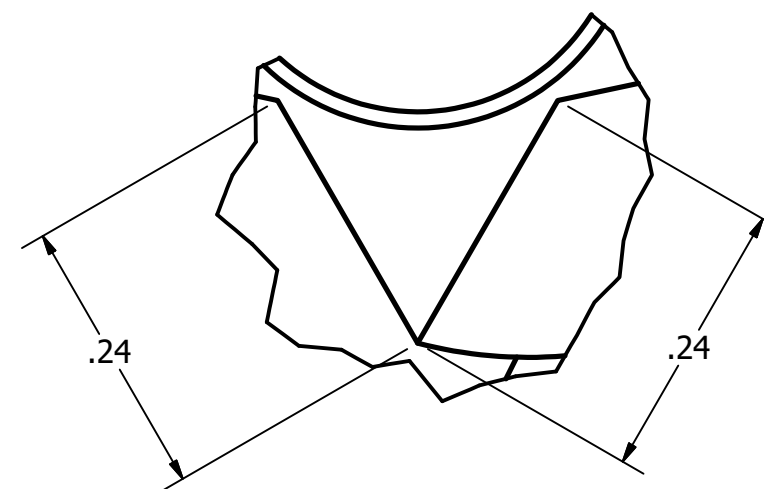
C

B

A



H (6 : 1)



Designed by Nino	Checked by	Approved by	Date 18/02/2021	Scale 3:1	Date 18/02/2021	
			Grinder Assembly/Assemblage du moulin			
			Coffee Grinder ANSI/Moulin à café ANSI	Edition	Sheet 5 / 13	

6

5

4

3

2

1

6

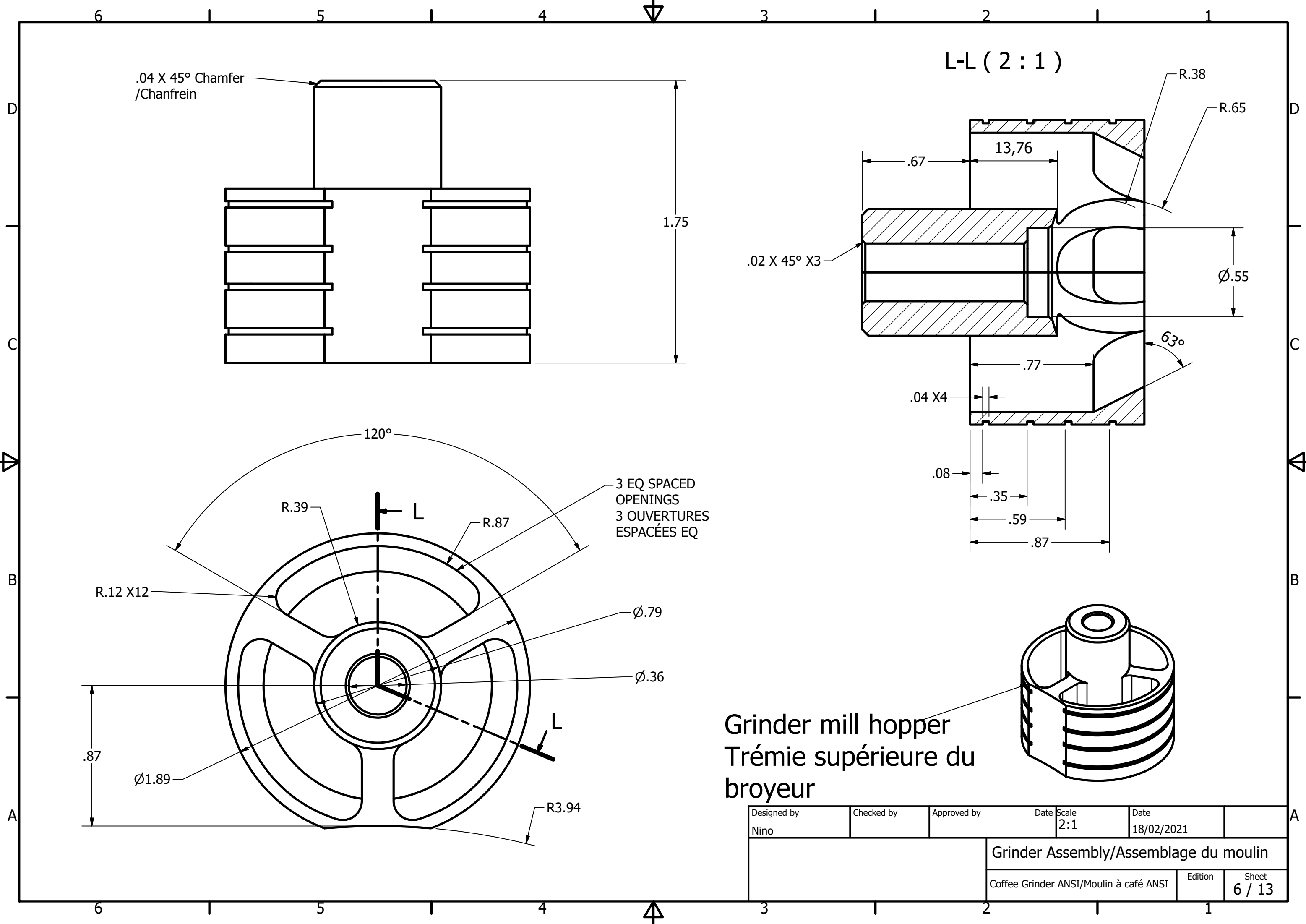
5

4

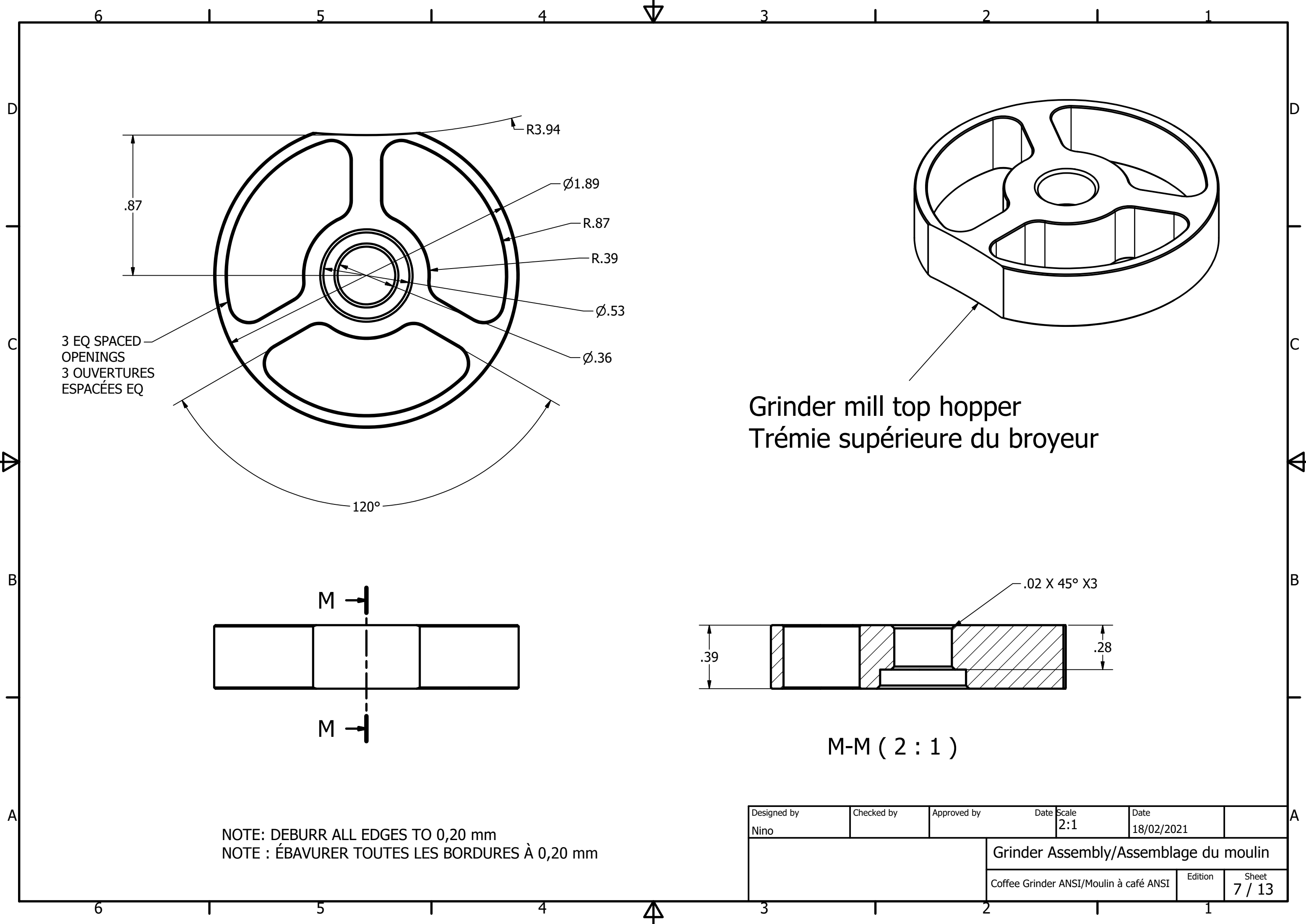
3

2

1



Designed by Nino	Checked by	Approved by	Date 18/02/2021	Scale 2:1	Date 18/02/2021	
			Grinder Assembly/Assemblage du moulin			
			Coffee Grinder ANSI/Moulin à café ANSI	Edition	Sheet 6 / 13	

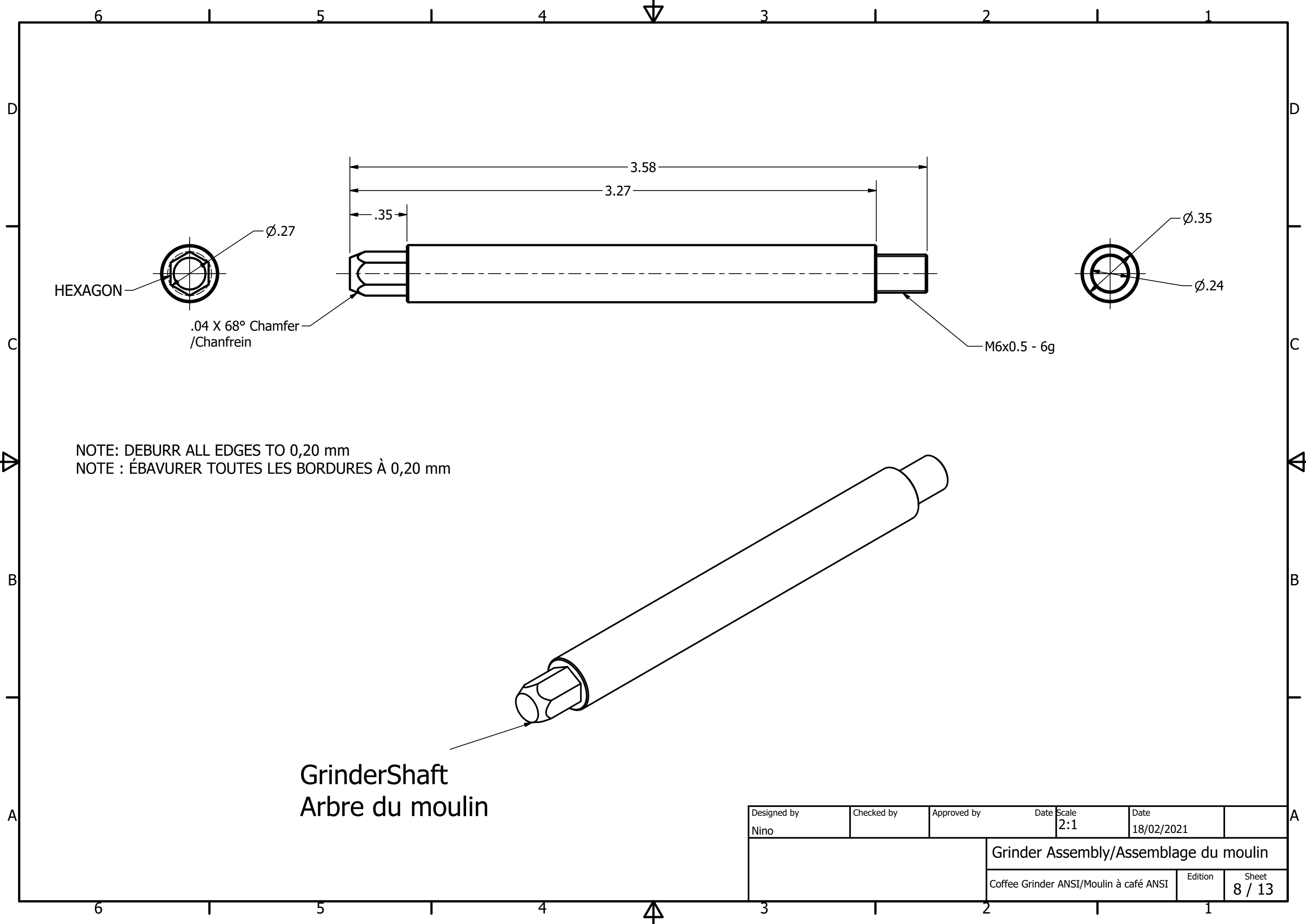


3 EQ SPACED
OPENINGS
3 OUVERTURES
ESPACÉES EQ

Grinder mill top hopper
Trémie supérieure du broyeur

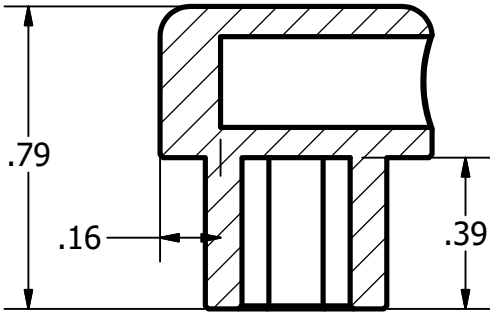
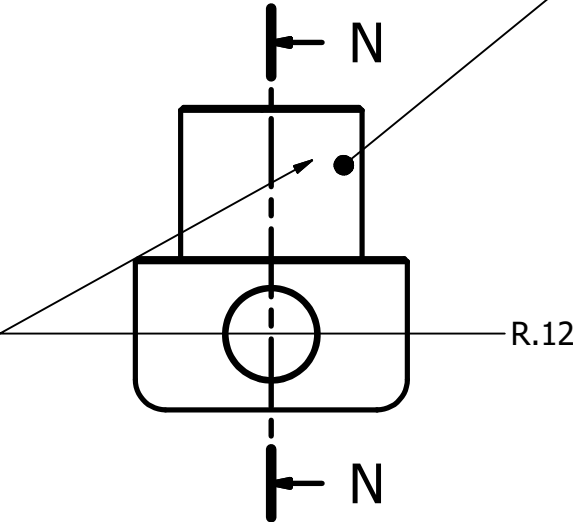
NOTE: DEBURR ALL EDGES TO 0,20 mm
NOTE : ÉBAVURER TOUTES LES BORDURES À 0,20 mm

Designed by Nino	Checked by	Approved by	Date 2:1	Date 18/02/2021	
			Grinder Assembly/Assemblage du moulin		
			Coffee Grinder ANSI/Moulin à café ANSI	Edition	Sheet 7 / 13

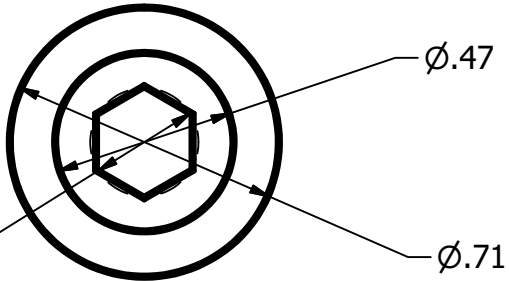


Designed by Nino	Checked by	Approved by	Date 18/02/2021	Scale 2:1	Date 18/02/2021	
			Grinder Assembly/Assemblage du moulin			
			Coffee Grinder ANSI/Moulin à café ANSI	Edition	Sheet 8 / 13	

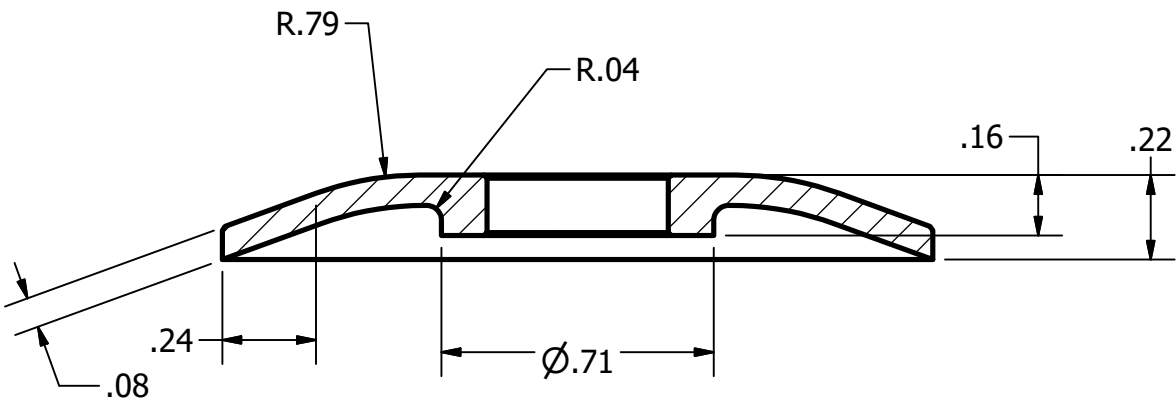
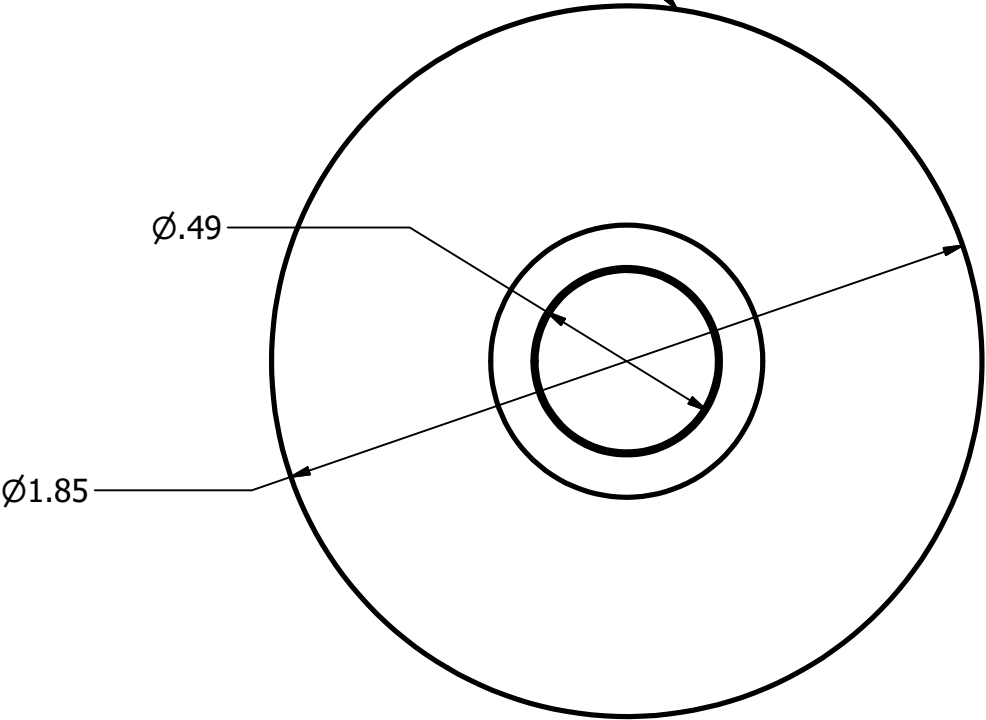
Grinder Handle cap/Capuchon de la poignée du moulin



N-N (2 : 1)



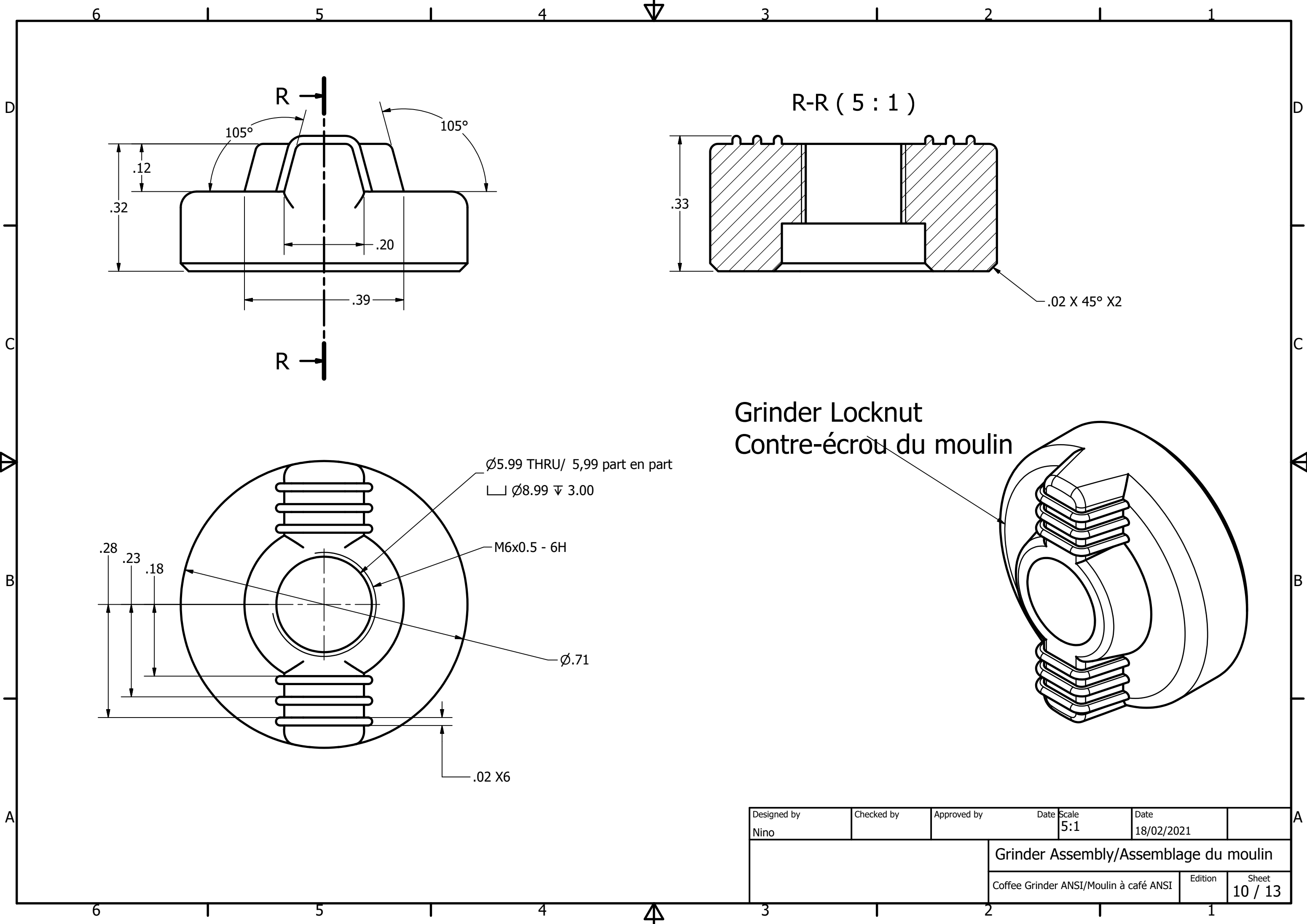
Grinder Lid
Couvercle du moulin



P-P (2 : 1)

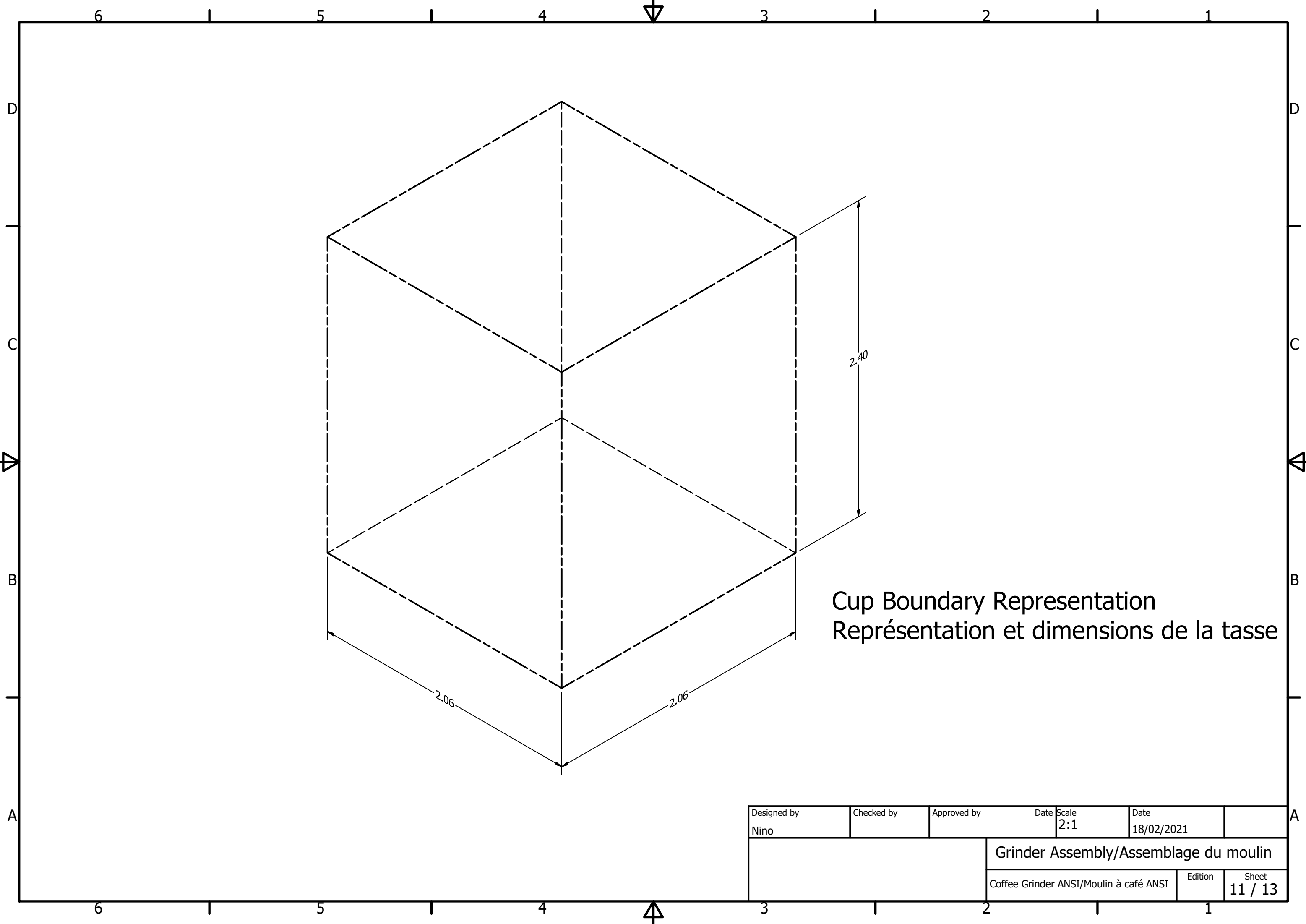
NOTE: DEBURR ALL EDGES TO 0,20 mm
NOTE : ÉBAVURER TOUTES LES BORDURES À 0,20 mm

Designed by Nino	Checked by	Approved by	Date 18/02/2021	Scale 2:1	Date 18/02/2021	
			Grinder Assembly/Assemblage du moulin			
			Coffee Grinder ANSI/Moulin à café ANSI	Edition	Sheet 9 / 13	



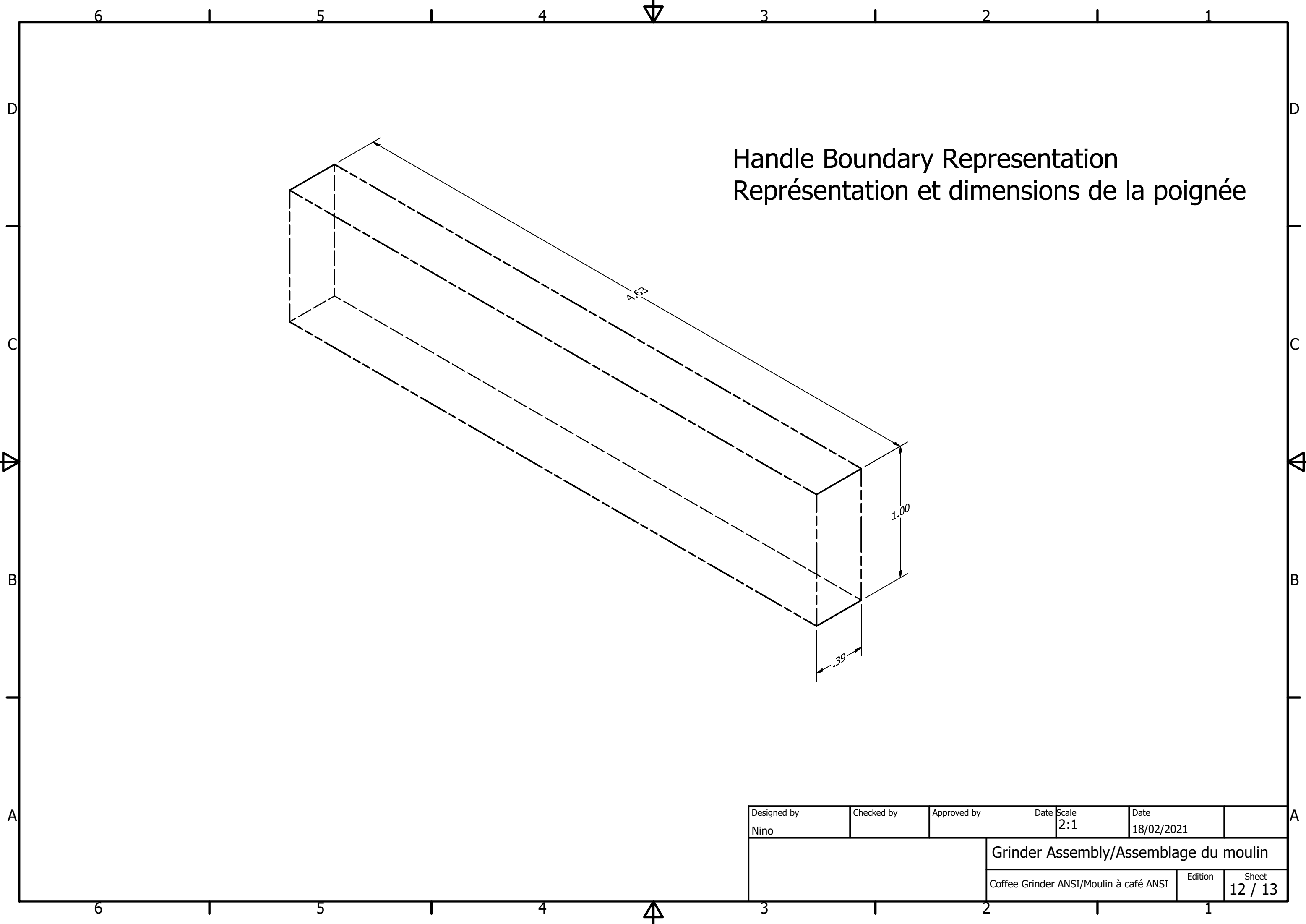
Grinder Locknut
Contre-écrou du moulin

Designed by Nino	Checked by	Approved by	Date 18/02/2021	Scale 5:1	Date 18/02/2021
			Grinder Assembly/Assemblage du moulin		
			Coffee Grinder ANSI/Moulin à café ANSI	Edition	Sheet 10 / 13



Cup Boundary Representation
Représentation et dimensions de la tasse

Designed by Nino	Checked by	Approved by	Date 18/02/2021	Scale 2:1	Date 18/02/2021	
			Grinder Assembly/Assemblage du moulin			
			Coffee Grinder ANSI/Moulin à café ANSI		Edition	Sheet 11 / 13



Handle Boundary Representation
Représentation et dimensions de la poignée

Designed by Nino	Checked by	Approved by	Date 18/02/2021	Scale 2:1	Date 18/02/2021	
			Grinder Assembly/Assemblage du moulin			
			Coffee Grinder ANSI/Moulin à café ANSI	Edition	Sheet 12 / 13	

