

TOOL TOTE

ORTHOGRAPHIC
VIEWS

SECTION ORIGINS

notes:

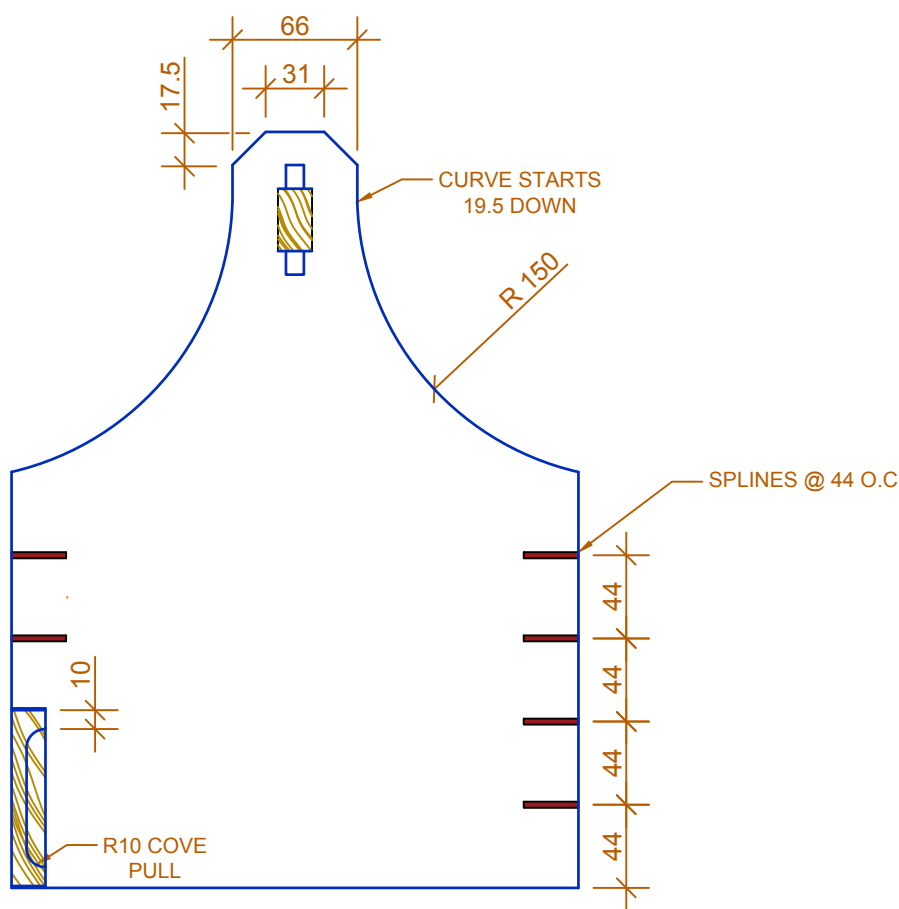
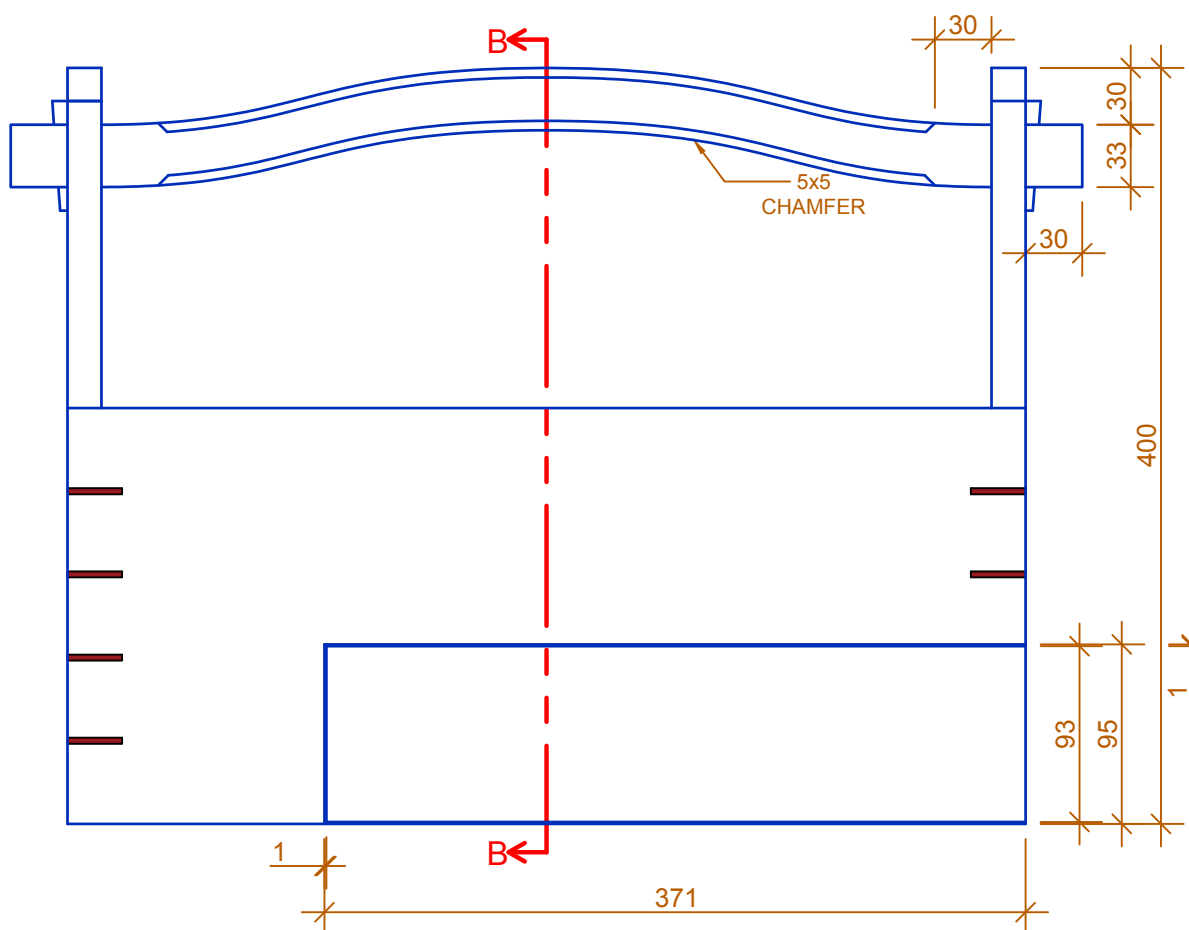
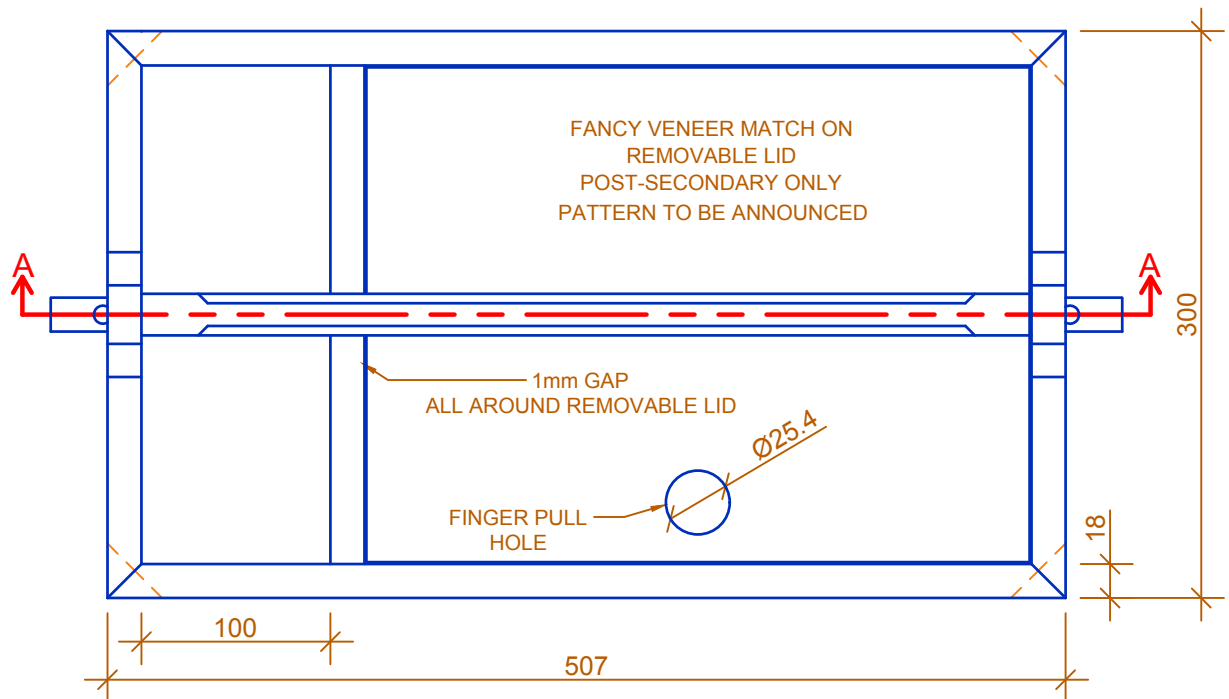
SCALE - 1:4

PAGE 1 OF 3

drawn by:
mm

06/11/19

- TOOL TOTE
- SIDES, DIVIDER, SHELF, BOTTOM, REMOVABLE LID IN BALTIC BIRCH PLYWOOD
 - HANDLE IN HICKORY
 - DRAWER SLAB FRONT IN SOLID WALNUT
 - TUSKS IN TOP OF HANDLE IN MAPLE DOWEL
 - DOVETAIL DRAWER BOX IN SOLID CHERRY
 - DRAWER BOTTOM 6MM BALTIC BIRCH PLYWOOD
 - DRAWER SLIDES ARE FULL EXTENSION ACCURIDES
 - REMOVABLE LID TO HAVE FEATURE VENEER MATCH (POST SECONDARY ONLY)
 - MITRED BOX CORNERS REINFORCED WITH HARDWOOD FEATHERS TO SUIT SAW KERF
 - CURVE ON BOX ENDS AND HANDLE ACCORDING TO SUPPLIED TEMPLATES



TOOL TOTE

SECTIONAL
VIEWS

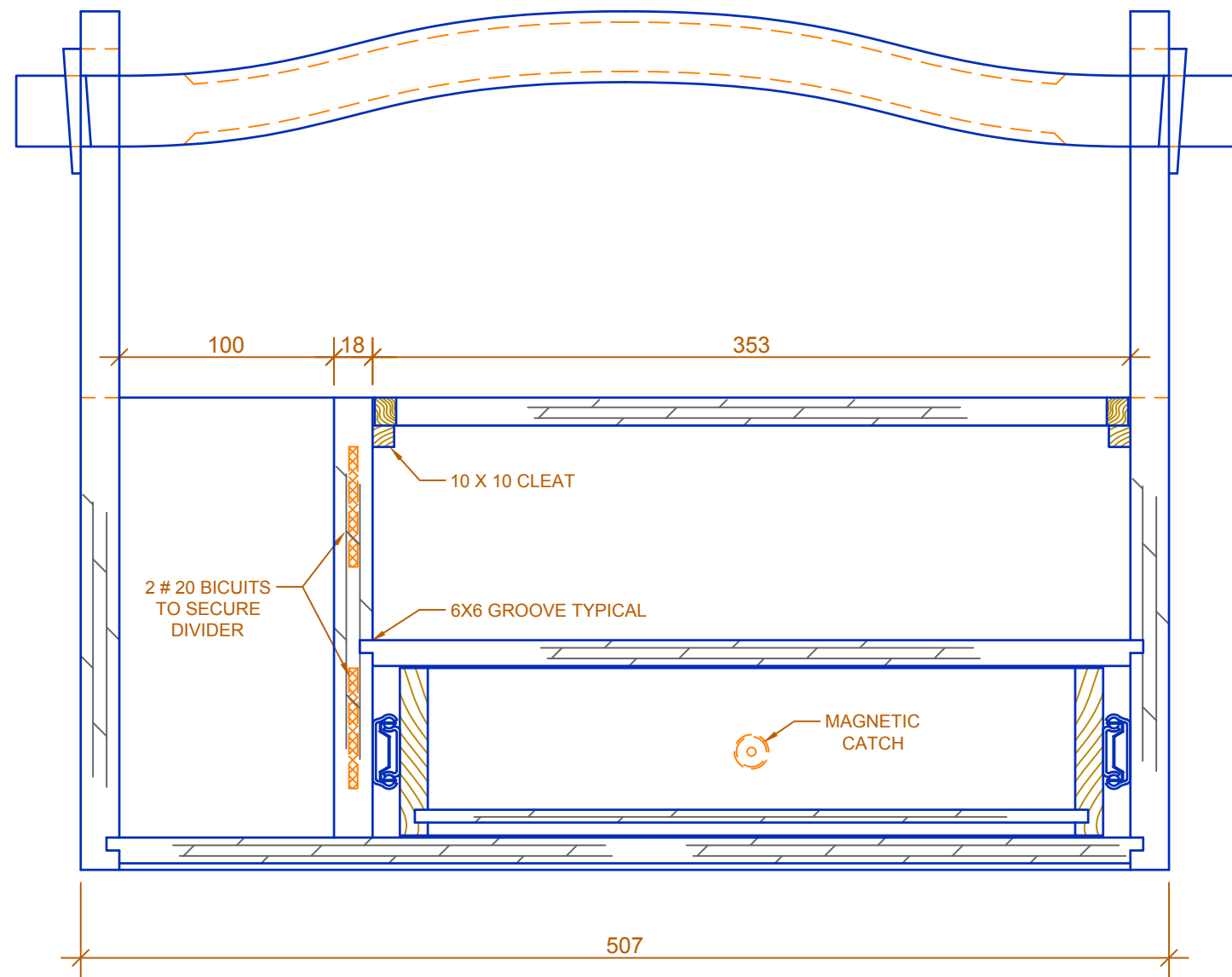
notes:

SCALE - 1:3

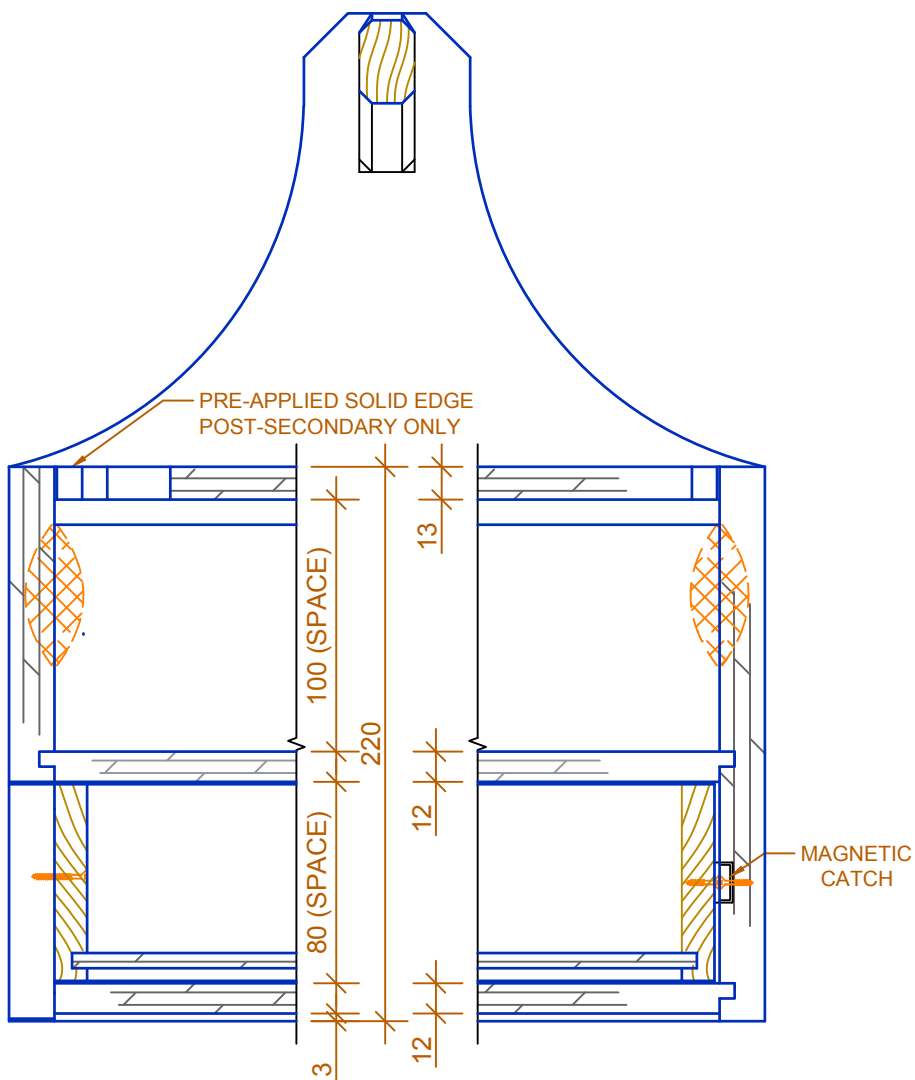
PAGE 2 OF 3

drawn by:
mm

06/11/19



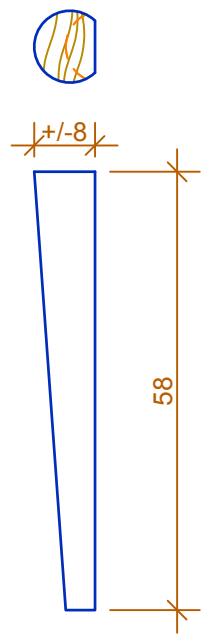
SECTION A - A



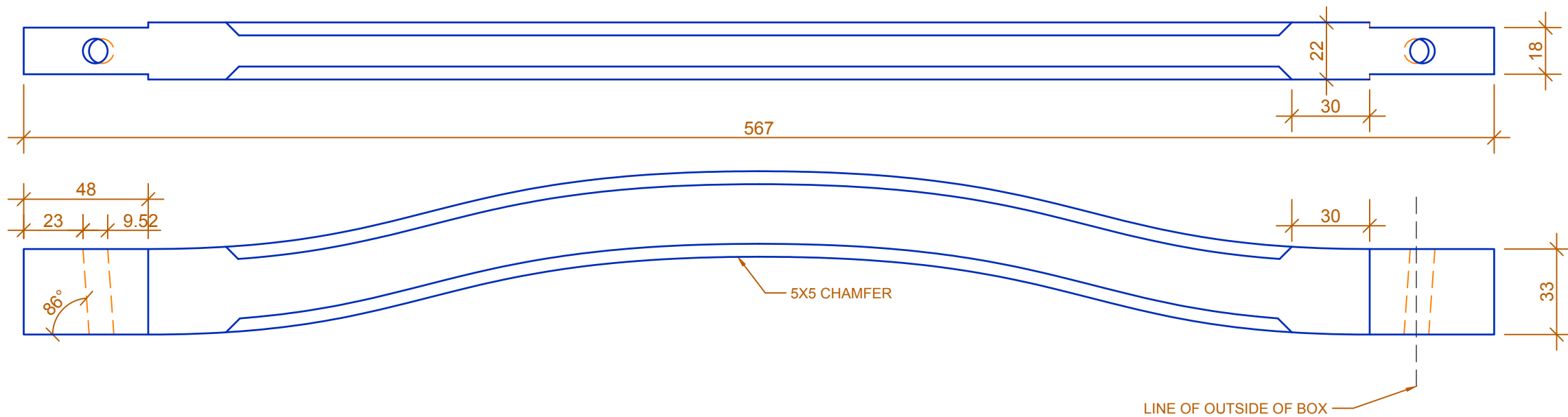
SECTION B - B

TOOL TOTE

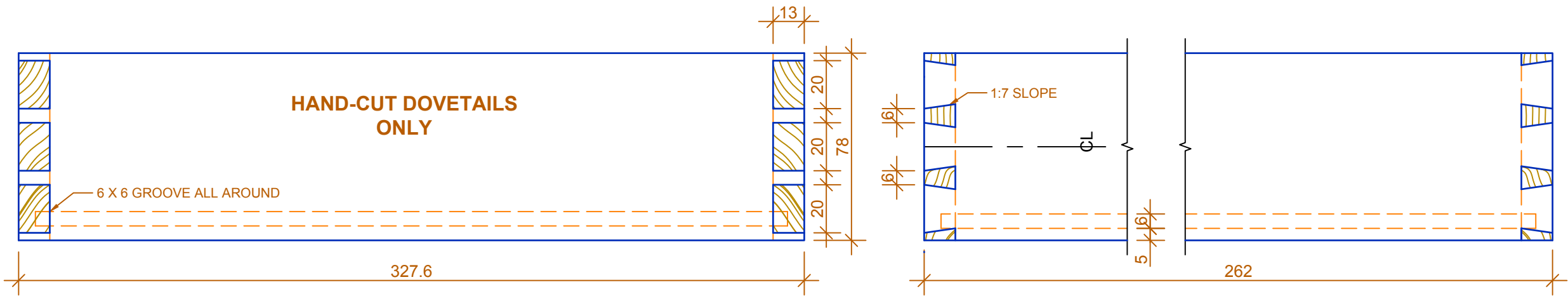
DRAWER,HANDLE
DETAILS



TUSK DETAIL
1:1



POST - SECONDARY ONLY
DRAWER DETAIL



notes:



DOCUMENT USE

SCALE - 1:2
OR AS NOTED

PAGE 3 OF 3

drawn by:
mm

06/11/19

SECONDARY ONLY
DRAWER DETAIL

