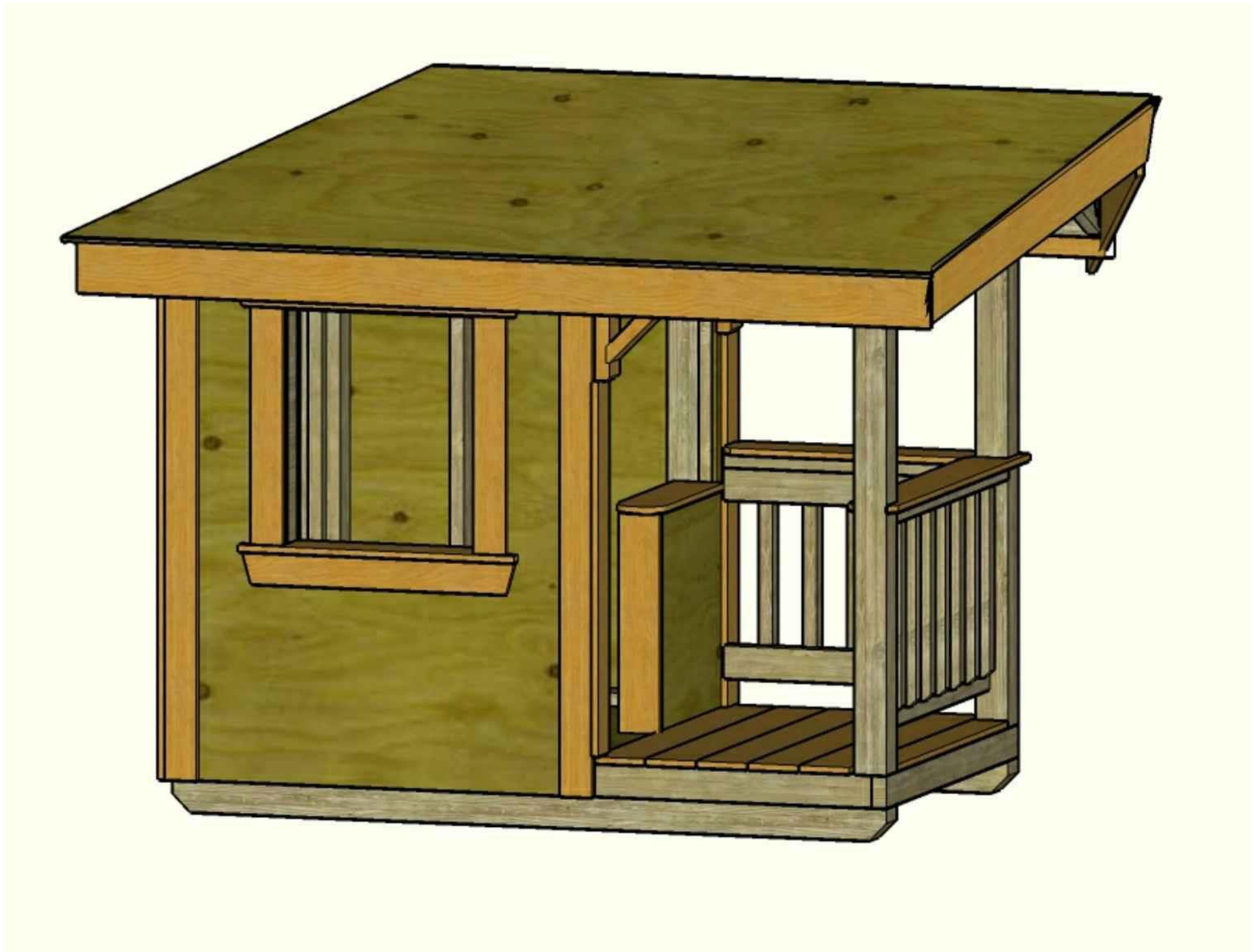




PROJECT (DRAWINGS)  
**Carpentry**  
POST-SECONDARY



**General Notes**

FOR EDUCATIONAL  
PURPOSE ONLY  
1)

**CONTENTS**

- A1- ISOMETRIC
- A2- PLANS
- A3- PLANS
- A4- ELEVATIONS
- A5- ELEVATIONS
- A6- SECTIONS
- A7- DETAILS
- A8- DETAILS
- A9- DETAILS
- A10- DETAILS

9	REVISIONS	SEPT. 12
...	...	...
2	REVISIONS	DEC.12
1	DRAFT	NOV. 12
No.	Revision/Issue	Date

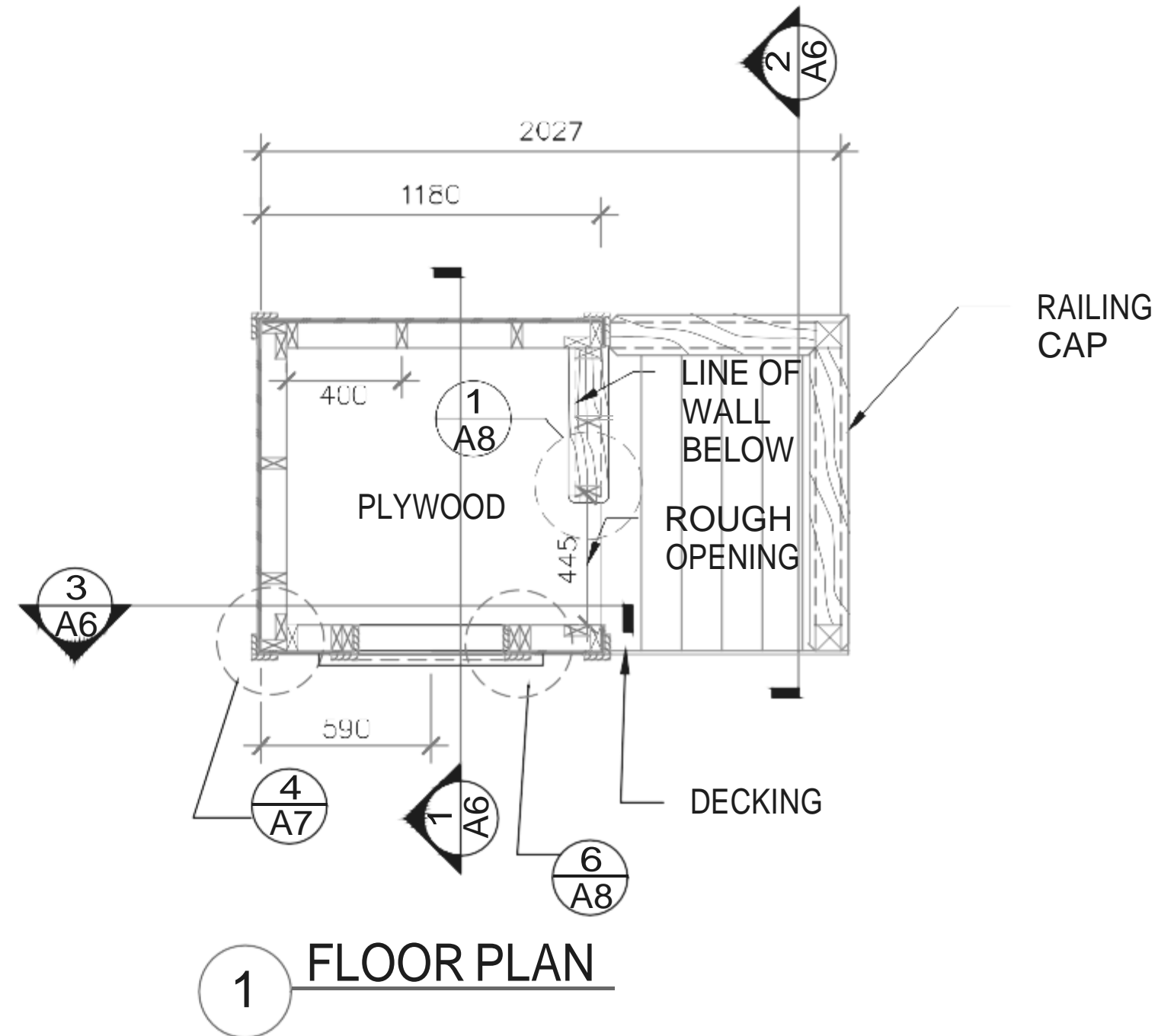
**SKILLS  
CANADA**

CARPENTRY  
POST  
SECONDARY

**ISOMETRIC  
VERSION 2**

DRAWN BY:  
I. DU PLESSIS  
DATE:  
SCNC2020  
SCALE:  
AS NOTED

SHEET #  
**A1**



## General Notes

FOR EDUCATIONAL  
PURPOSE ONLY

- <sup>1)</sup> All sheathing stock to be verified onsite
- <sup>2)</sup> Wall framing 2x4 = 38x89
- <sup>3)</sup> Finish/Soften all exposed edges
- <sup>4)</sup> All framing at 400 o/c
- <sup>5)</sup> All dimensions to framing
- <sup>6)</sup> All fastening for this project to be as per the National Building Code.

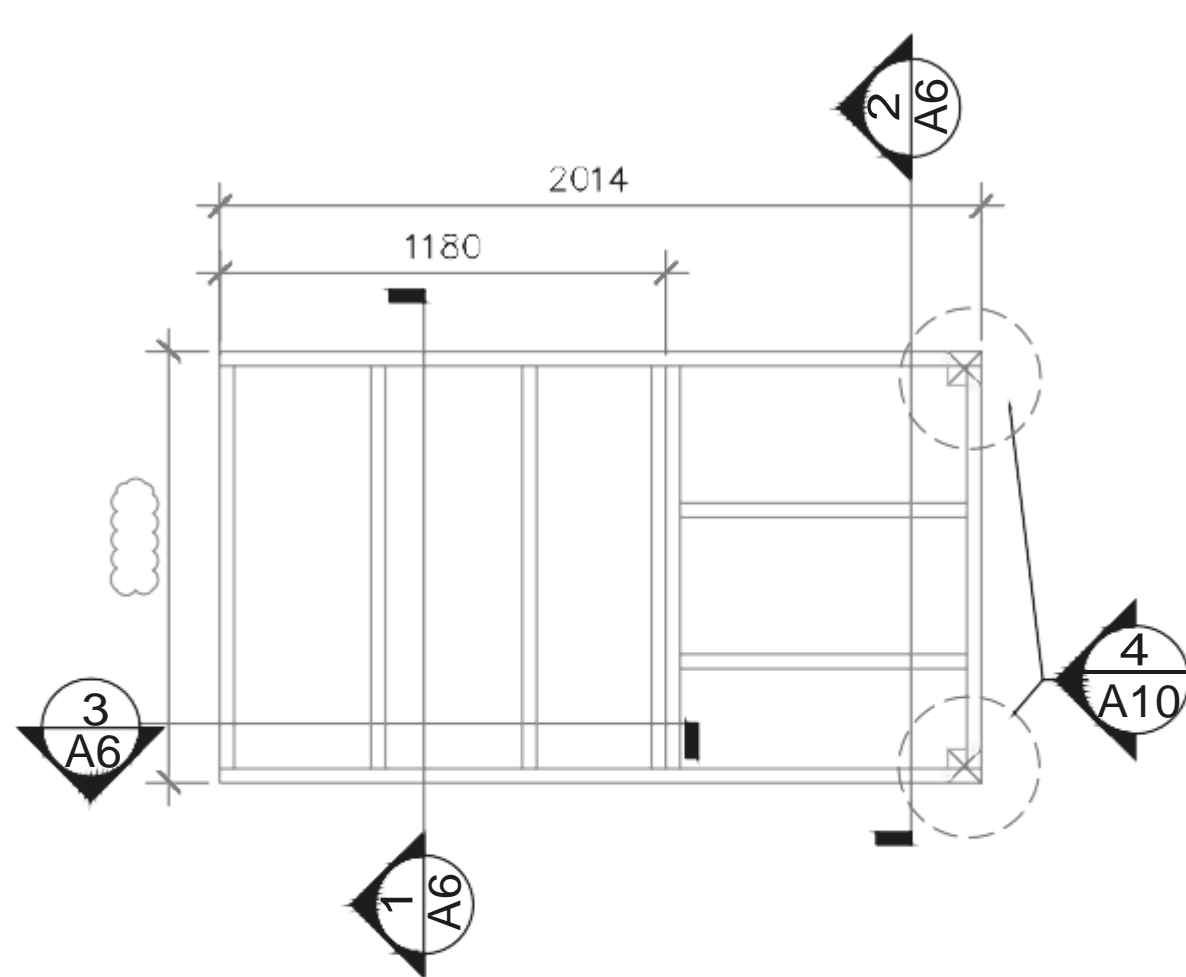
No.	Revision/Issue	Date
9	REVISIONS	SEPT. 12
...	...	...
2	REVISIONS	DEC. 12
1	DRAFT	NOV. 18

**SKILLS  
CANADA**

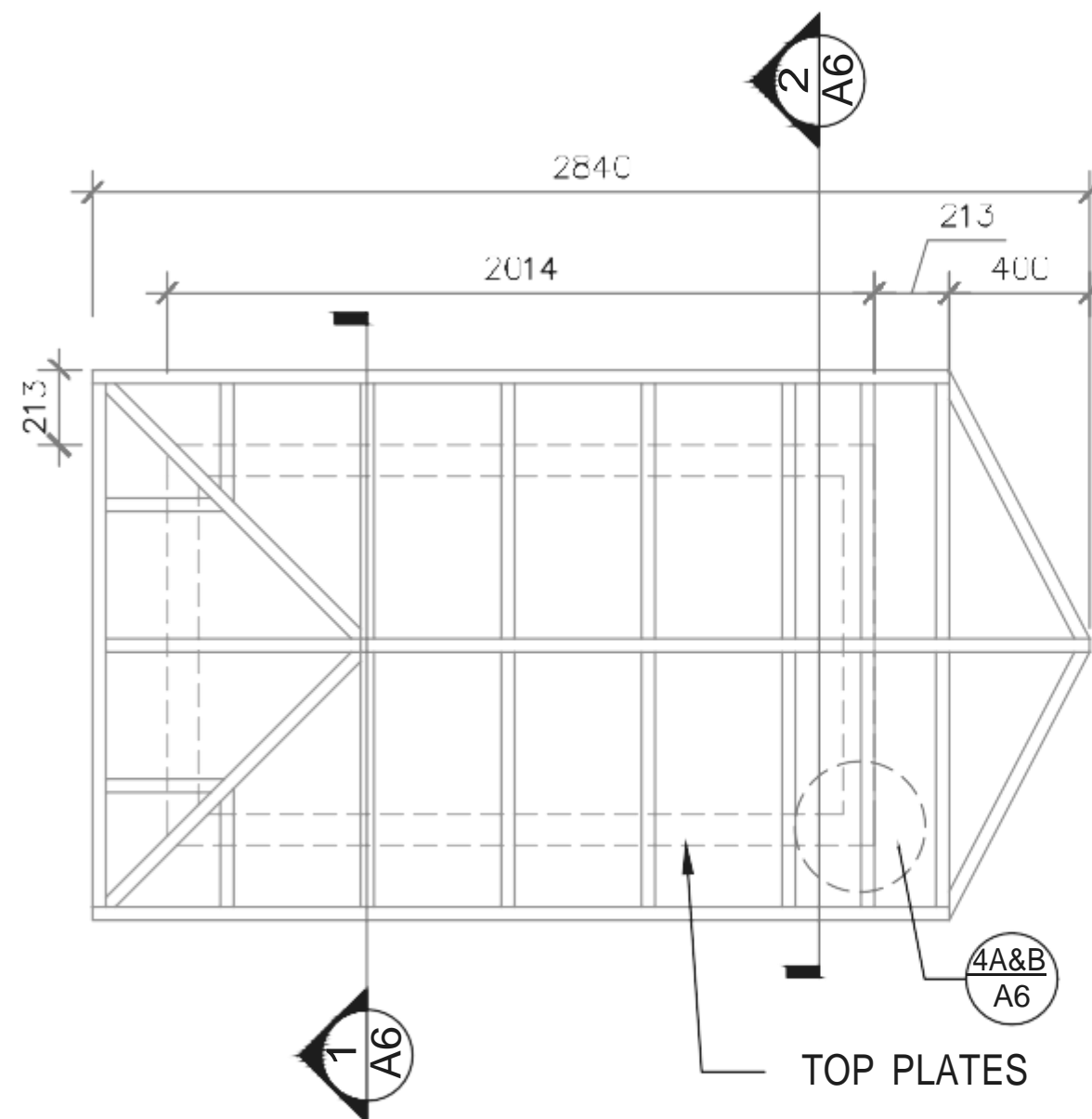
CARPENTRY  
POST  
SECONDARY

**PLANS**  
VERSION 2

DRAWN BY: I. DU PLESSIS	SHEET #
DATE: SCNC2020	A2
SCALE: AS NOTED	



2 FLOOR JOIST PLAN



1 ROOF FRAMING PLAN

## General Notes

FOR EDUCATIONAL  
PURPOSE ONLY

1)  
No sheathing for  
roof

2)  
Ridge and hip  
stock  
2x6/38x140

3)  
Hips to be  
back-bevelled; not  
dropped

No.	Revision/Issue	Date
9	REVISIONS	SEPT. 12
...	...	...
2	REVISIONS	DEC.12
1	DRAFT	NOV. 18

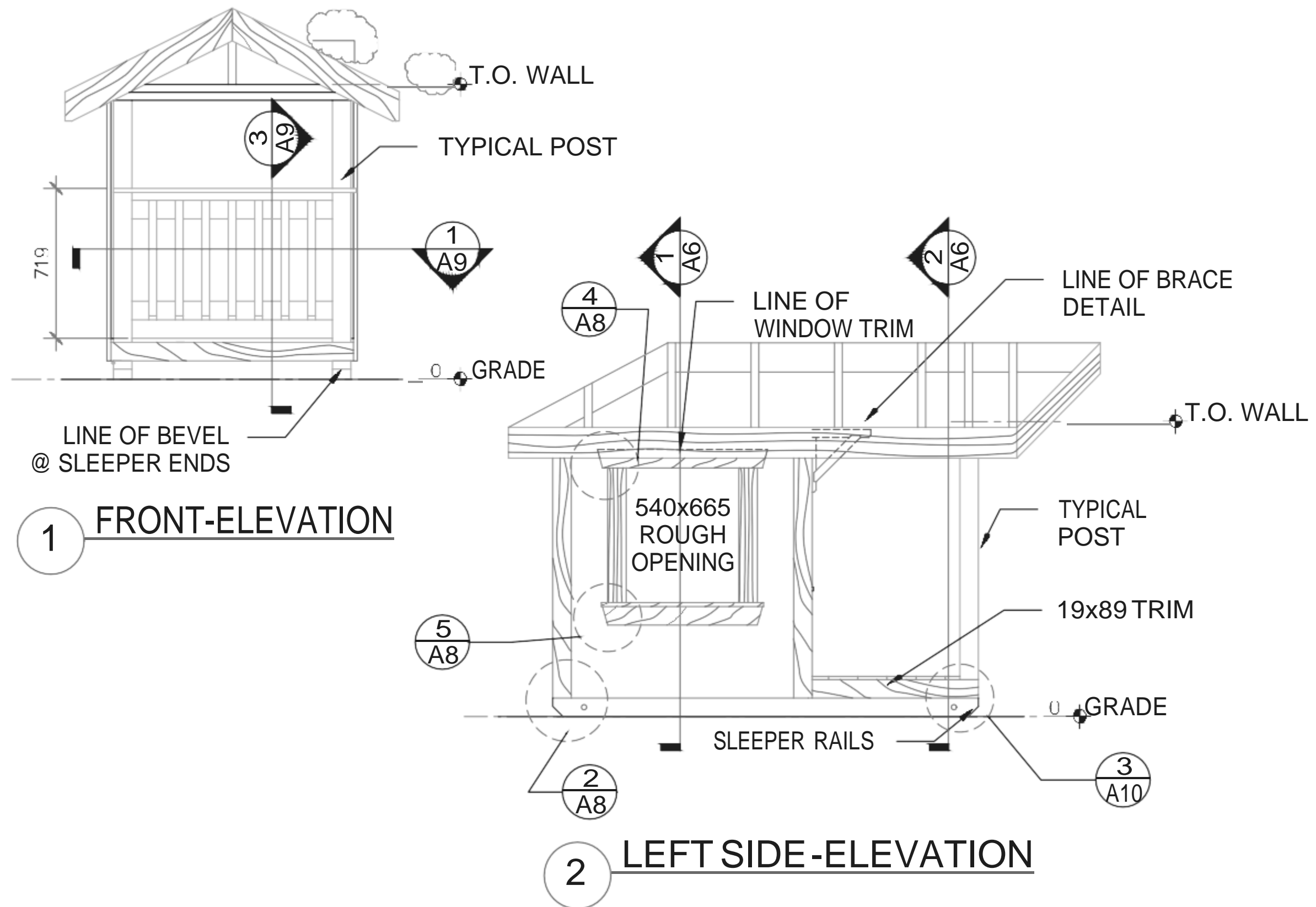
**SKILLS  
CANADA**

CARPENTRY  
POST  
SECONDARY

**PLANS**  
VERSION 2

DRAWN BY:  
I. DU PLESSIS  
DATE:  
SCNC2020  
SCALE:  
AS NOTED

SHEET #  
**A3**



## General Notes

FOR EDUCATIONAL  
PURPOSE ONLY

1) T.O. = Top of Wall

2) Sleeper rails  
treated 4x4

3) Fascia  
1x6/19x140

4) Window trim  
1x4/19x89

5) Balusters  
2x2/38x39

No.	Revision/Issue	Date
9	REVISIONS	SEPT. 12
...	...	...
2	REVISIONS	DEC. 12
1	DRAWING	NOV. 11

**SKILLS  
CANADA**

CARPENTRY  
POST  
SECONDARY

**ELEVATIONS  
VERSION 2**

DRAWN BY: I. DU PLESSIS	SHEET #
DATE: SCNC2020	A4
SCALE: AS NOTED	



General Notes  
FOR EDUCATIONAL  
PURPOSE ONLY  
1)

No.	Revision/Issue	Date
9	REVISIONS	SEPT. 12
...	...	...
2	REVISIONS	DEC. 12
1	DRAFT	NOV. 19

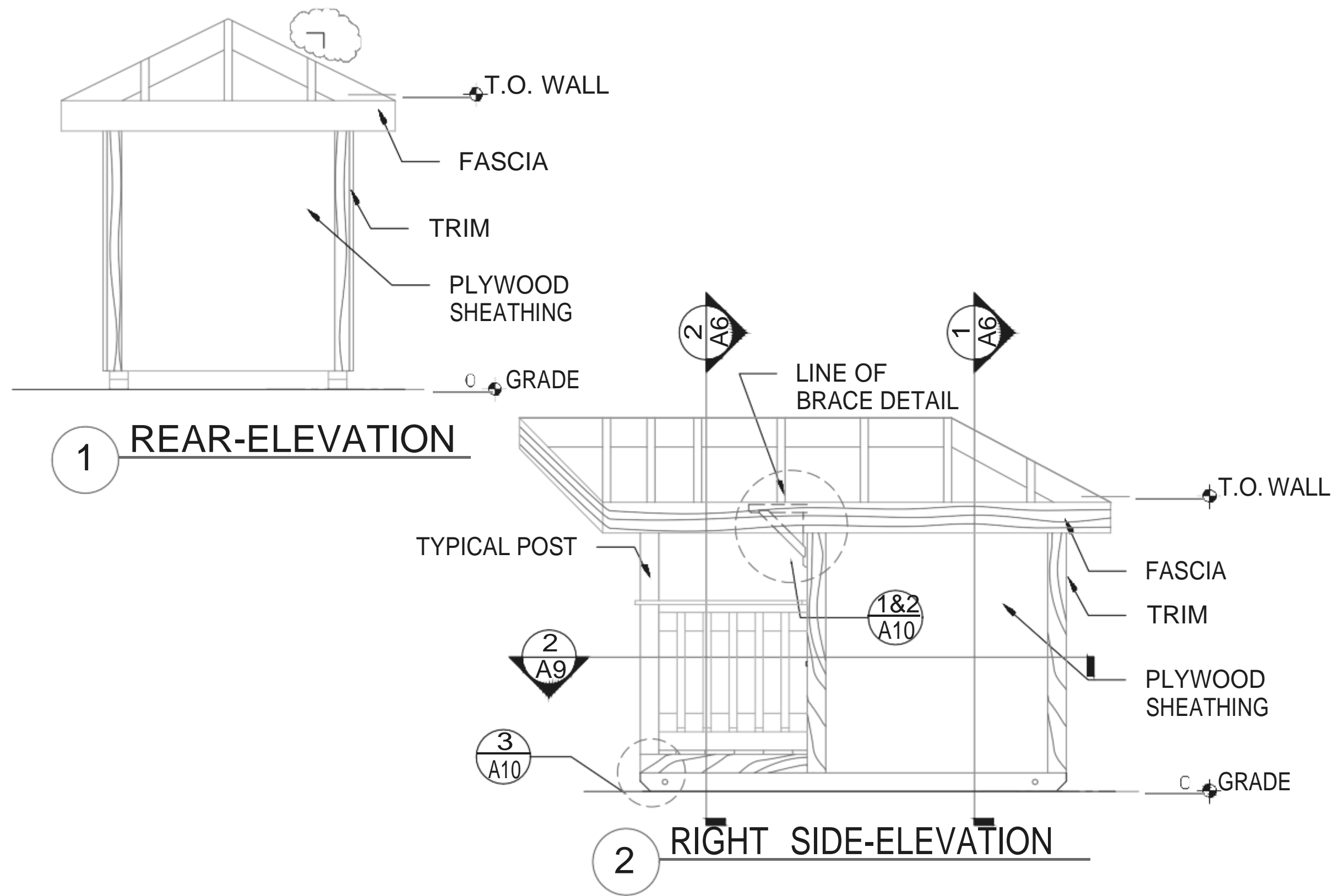
SKILLS  
CANADA

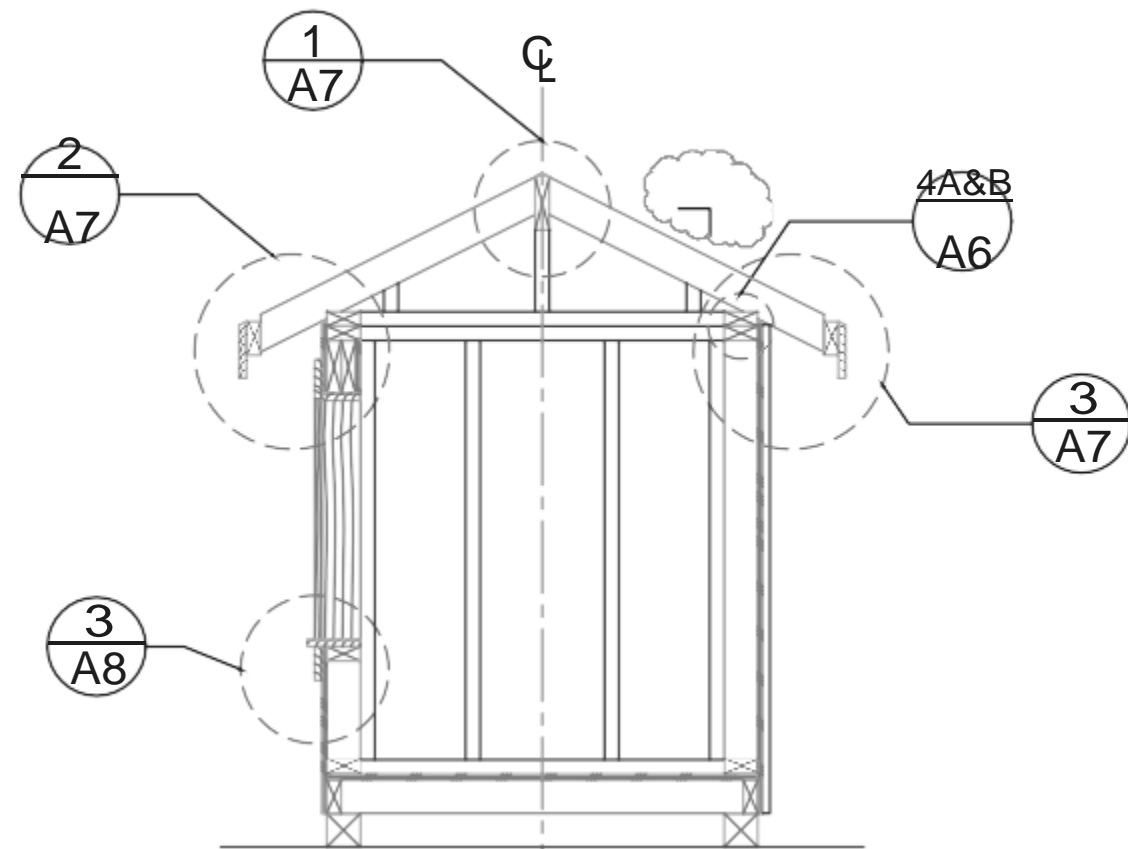
CARPENTRY  
POST  
SECONDARY

ELEVATIONS  
VERSION 2

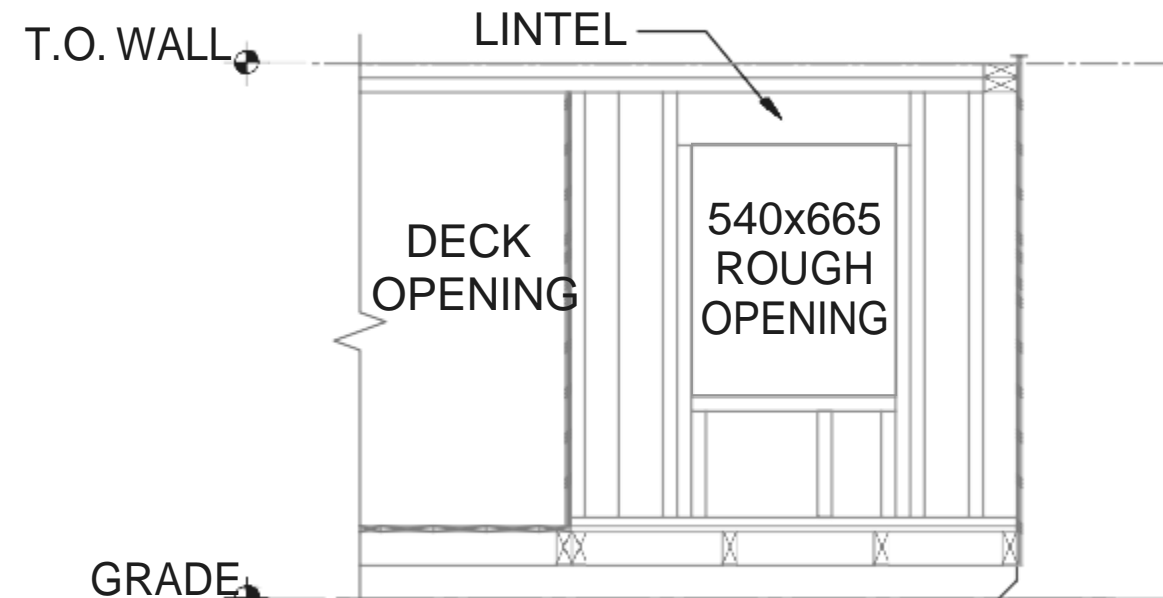
DRAWN BY:  
I. DU PLESSIS  
DATE:  
SCNC2020  
SCALE:  
AS NOTED

SHEET #  
A5

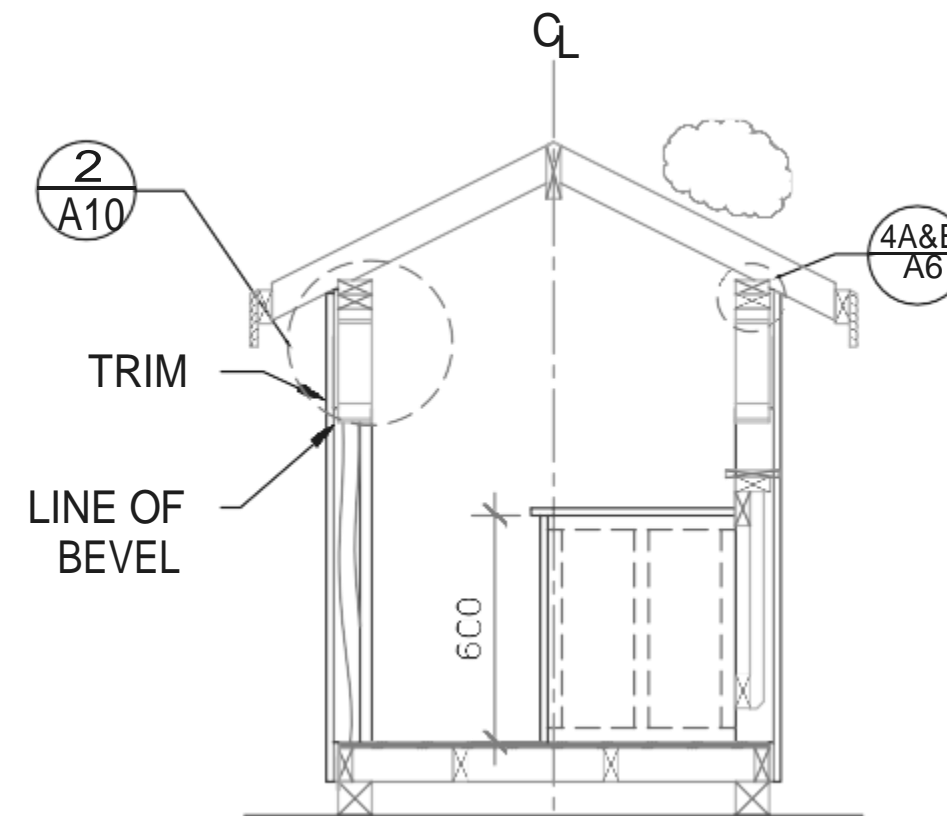




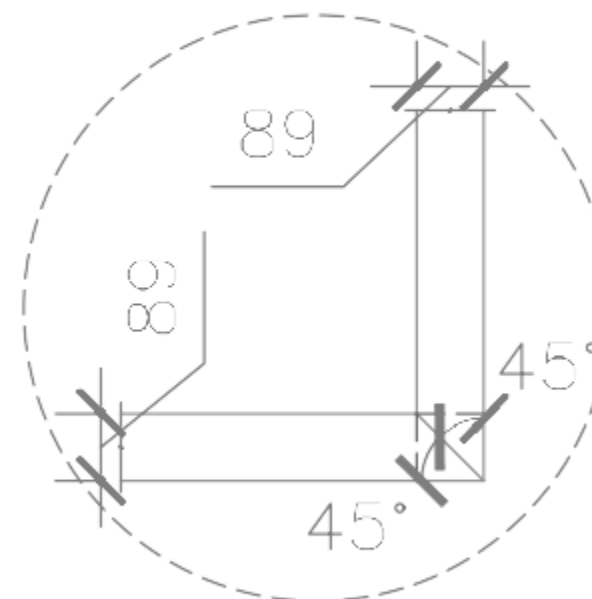
**1 SECTION-1**  
A2, A3, A4, A5



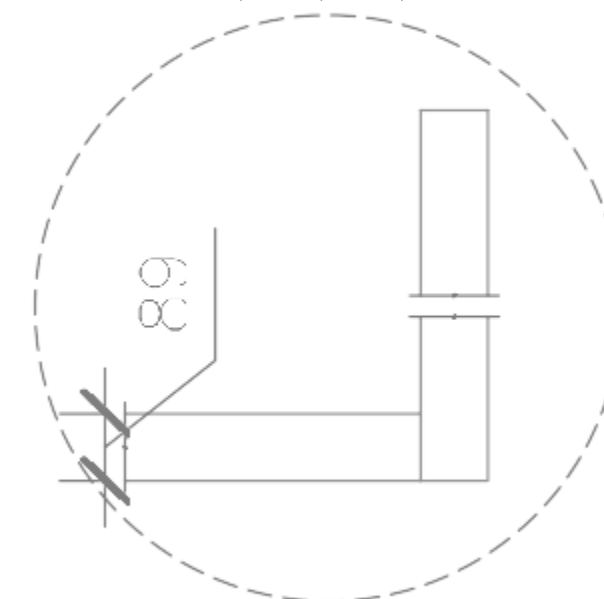
**3 SECTION-3**  
A2, A3



**2 SECTION2**  
(EXCLUDING BACKWALL)  
A2, A3, A4, A5



**4A PLAN OF LOWER TOP PLATE**  
CONNECTION AT POSTS



**4B PLAN OF UPPER TOP PLATE**  
CONNECTION AT POSTS

**General Notes**  
FOR EDUCATIONAL  
PURPOSE ONLY  
Lintel 2ply  
89x140

No.	Revision/Issue	Date
9	REVISIONS	SEPT. 12
2	REVISIONS	DEC.12
1	DRAFT	NOV. 19

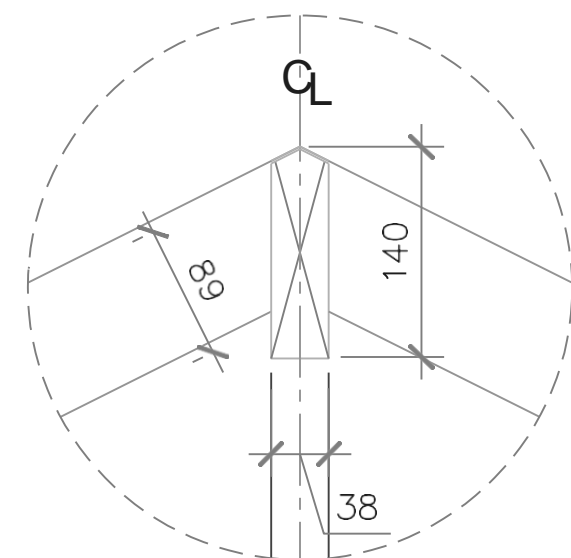
**SKILLS  
CANADA**

CARPENTRY  
POST  
SECONDARY

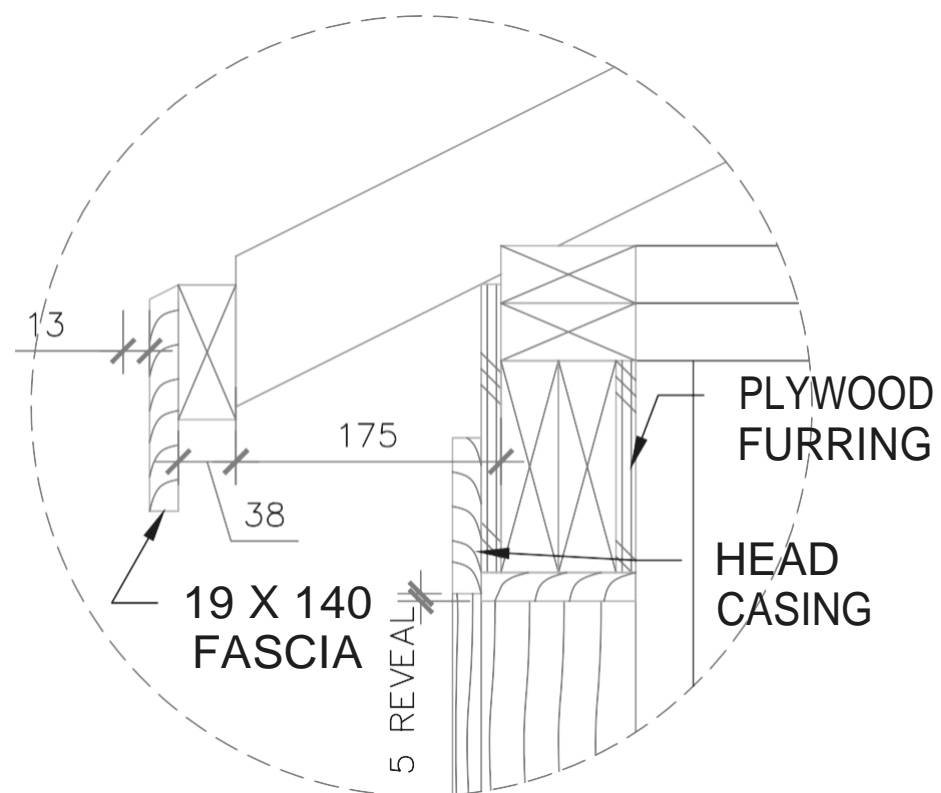
**SECTIONS**  
VERSION 2

DRAWN BY:  
I. DU PLESSIS  
DATE: SCNC2020  
SCA AS NOTED

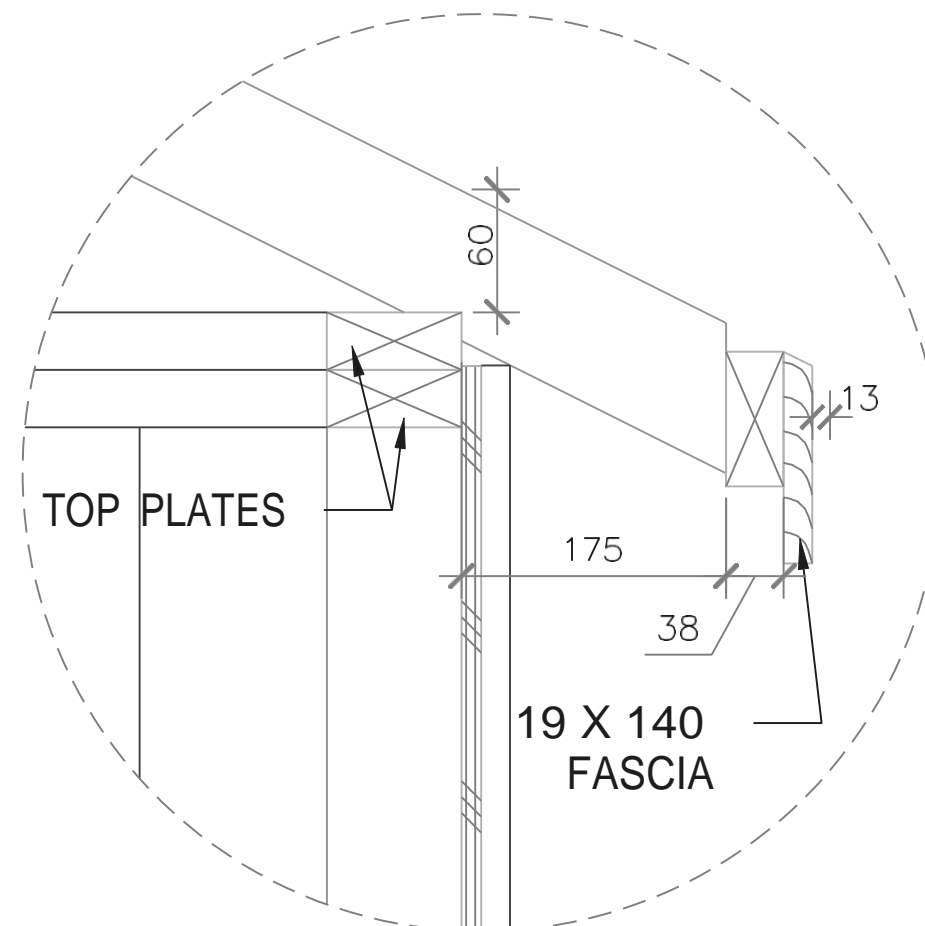
SHEET #  
**A6**



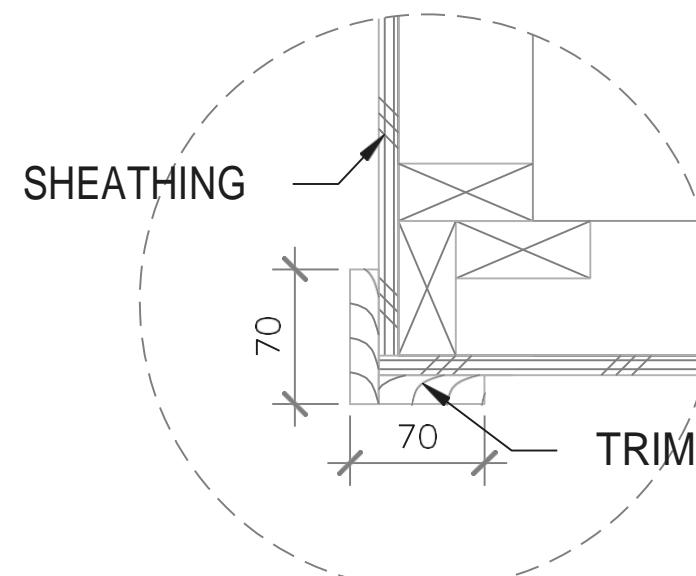
1 RIDGE DETAIL



2 EAVE DETAIL @LINTEL



3 TYP. EAVE DETAIL



4 TYP. WALL @CORNER

**General Notes**  
FOR EDUCATIONAL  
PURPOSE ONLY  
1) **FASCIA CORNERS  
TO BE MITRED**

9	REVISIONS	SEPT. 12
...	...	...
2	REVISIONS	DEC. 12
1	DRAFT	NOV. 12
No.	Revision/Issue	Date

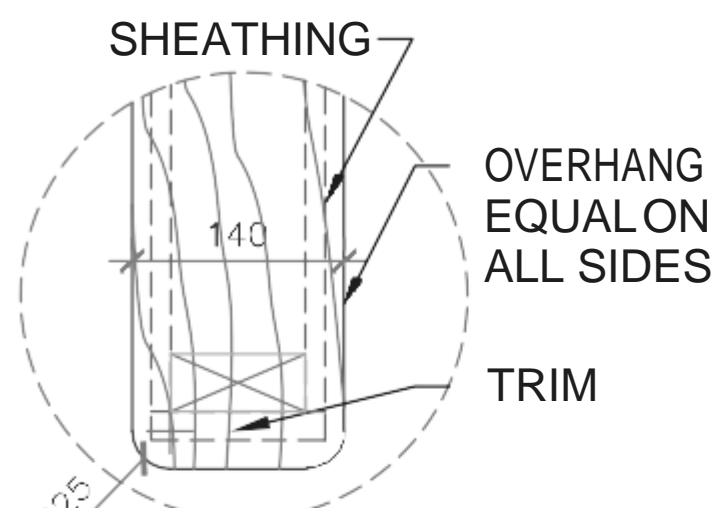
**SKILLS  
CANADA**

**CARPENTRY  
POST  
SECONDARY**

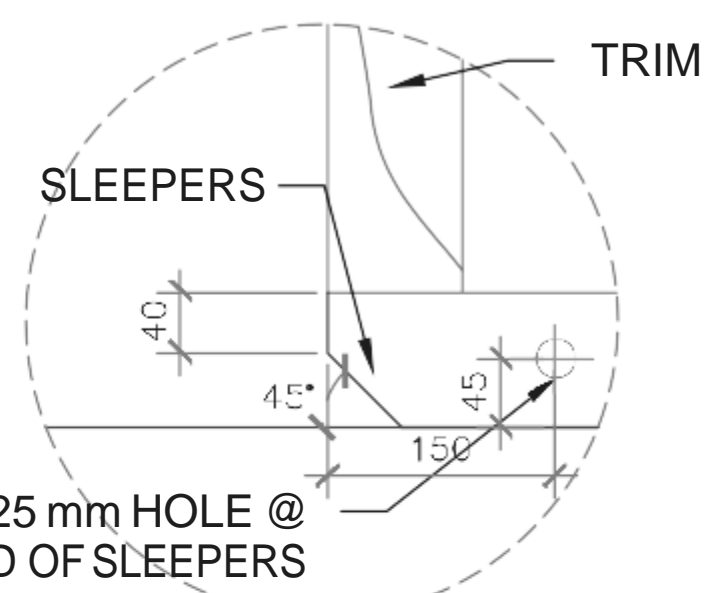
**DETAILS  
VERSION 2**

DRAWN BY: I. DU PLESSIS	SHEET #
DATE: SCNC2020	<b>A7</b>
SCALE: AS NOTED	

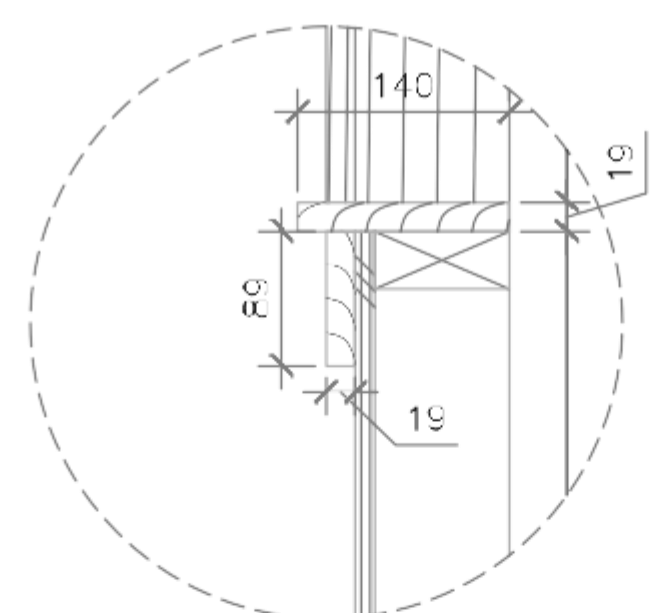




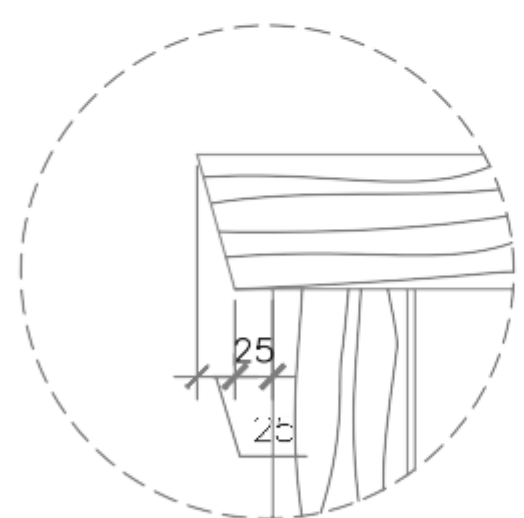
1  
A2  
**WALL CAP DETAIL**



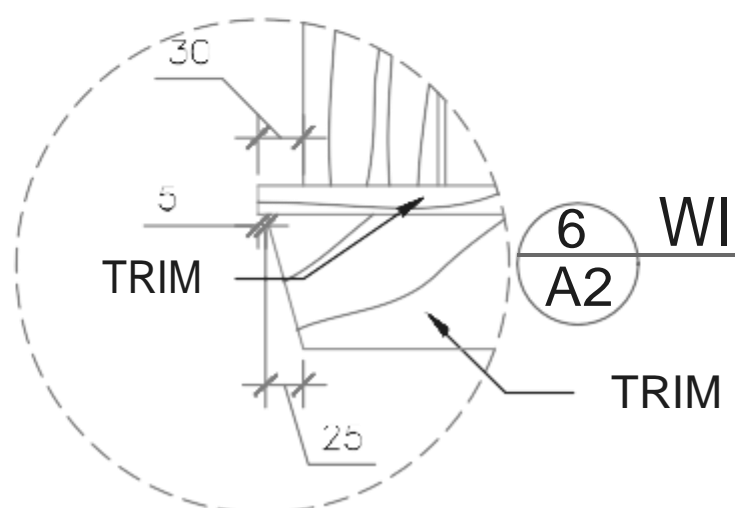
2  
A4  
**SLEEPER ANGLE DETAIL**



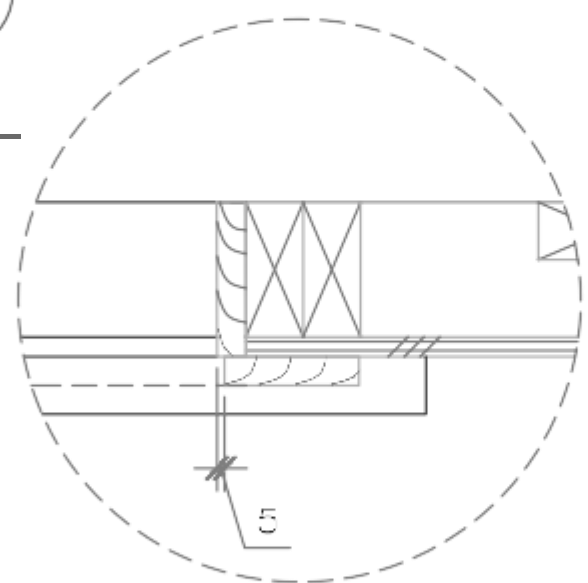
3  
A4  
**WINDOW SILL DETAIL**



4  
A4  
**WINDOW HEAD TRIM DETAIL**



5  
A4  
**WINDOW SILL TRIM DETAIL**



6  
A2  
**WINDOWSILL PLAN DETAIL**

**General Notes**  
FOR EDUCATIONAL  
PURPOSE ONLY

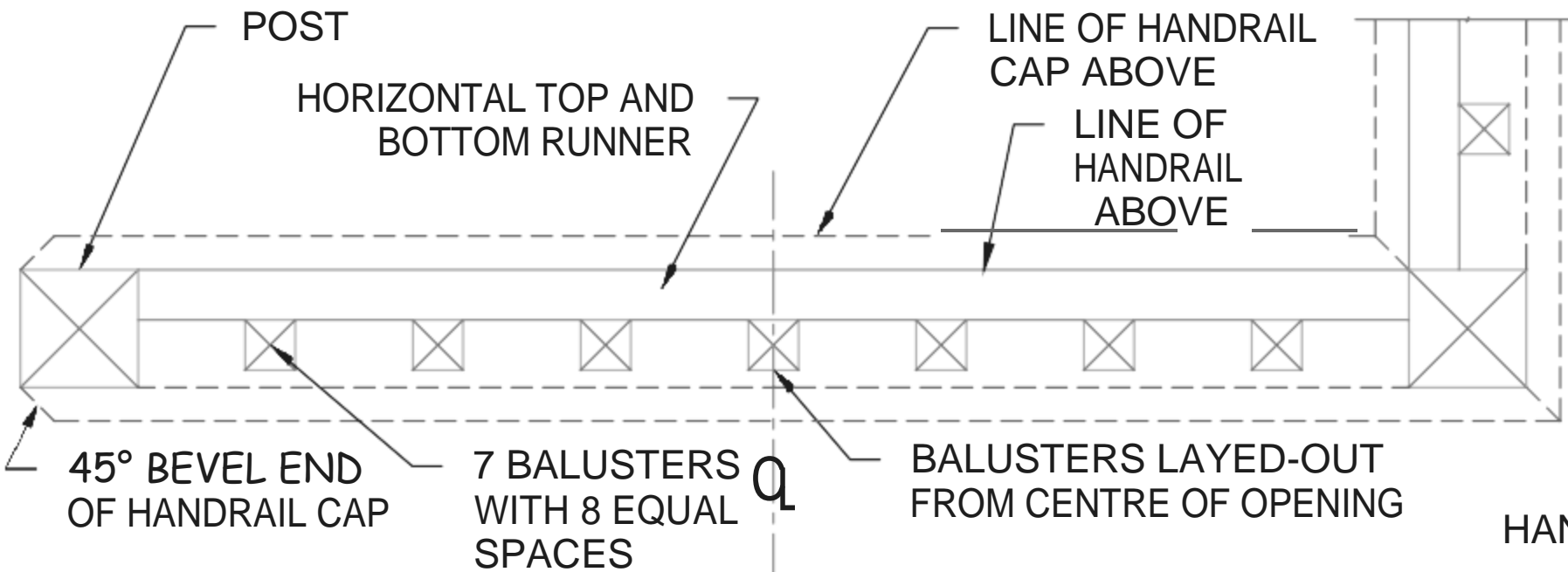
9	REVISIONS	SEPT. 12
...	...	...
2	REVISIONS	DEC. 12
1	DRAFT	NOV. 18
No.	Revision/Issue	Date

**SKILLS  
CANADA**

**CARPENTRY  
POST  
SECONDARY**

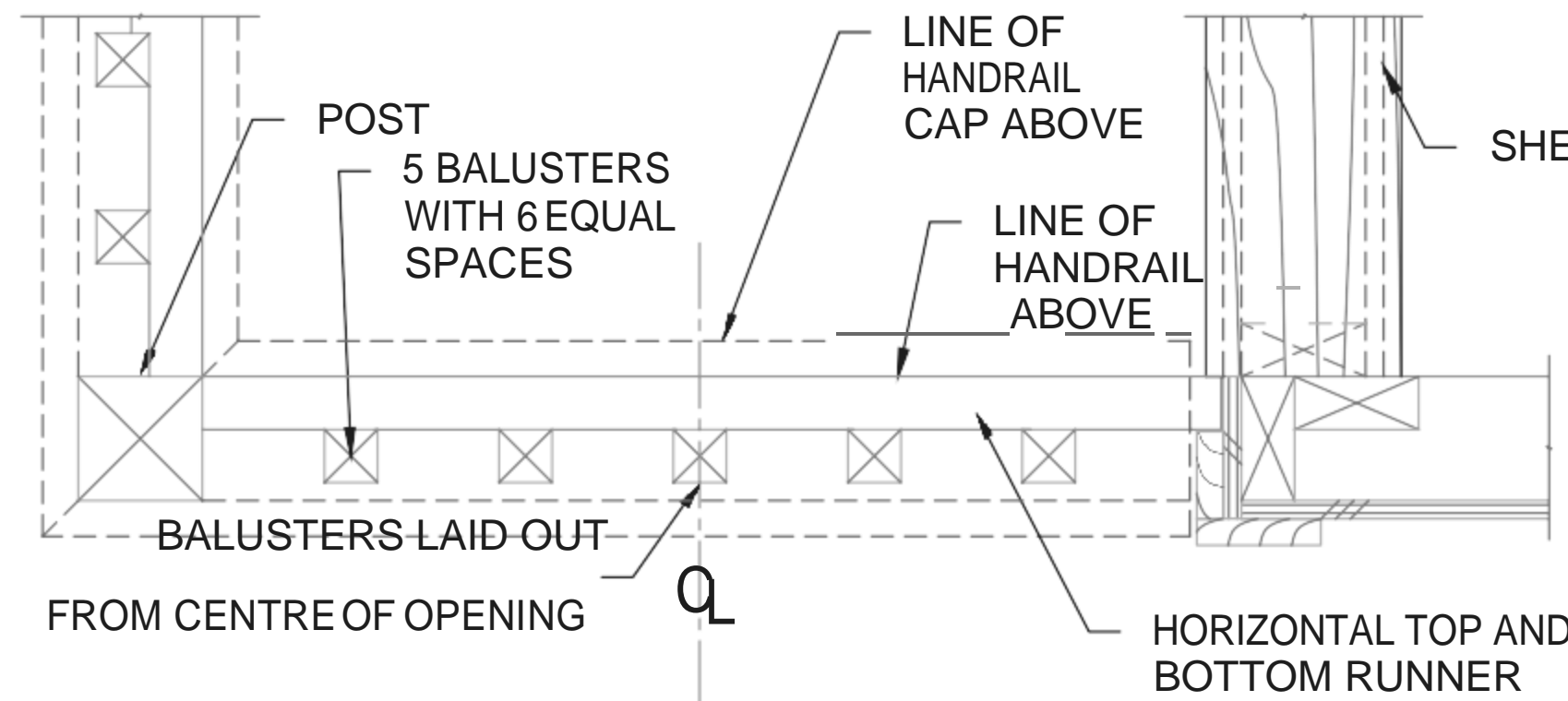
**DETAILS  
VERSION 2**

DRAWN BY: I. DU PLESSIS	SHEET #
DATE: SCNC2020	A8
SCALE: AS NOTED	



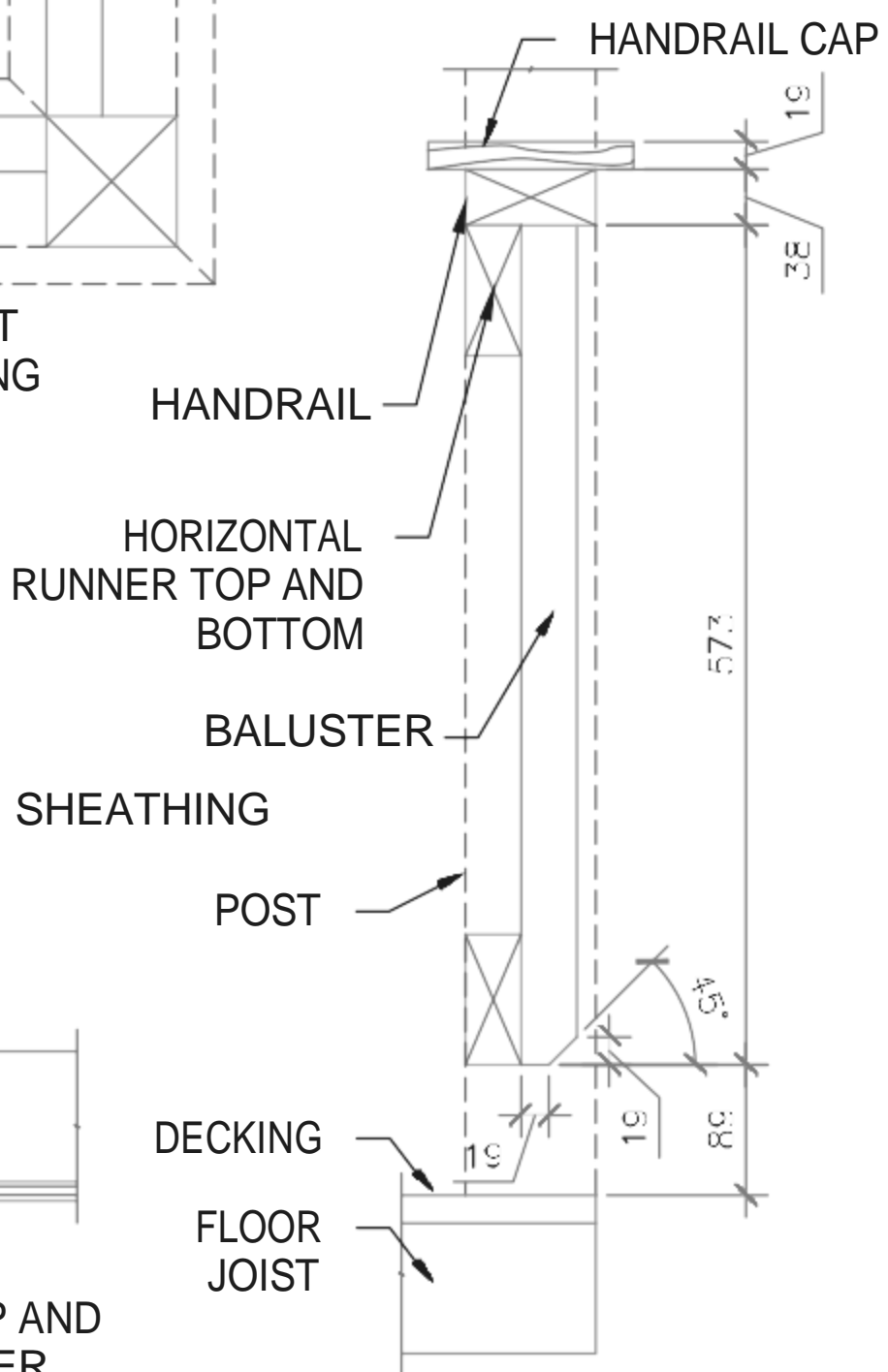
1  
A4

**FRONT RAILING PLAN**



2  
A5

**SIDE RAILING PLAN**



3  
A4

**BALUSTER SECTION**

**General Notes**

FOR EDUCATIONAL PURPOSE ONLY

1) All handrail materials are cedar

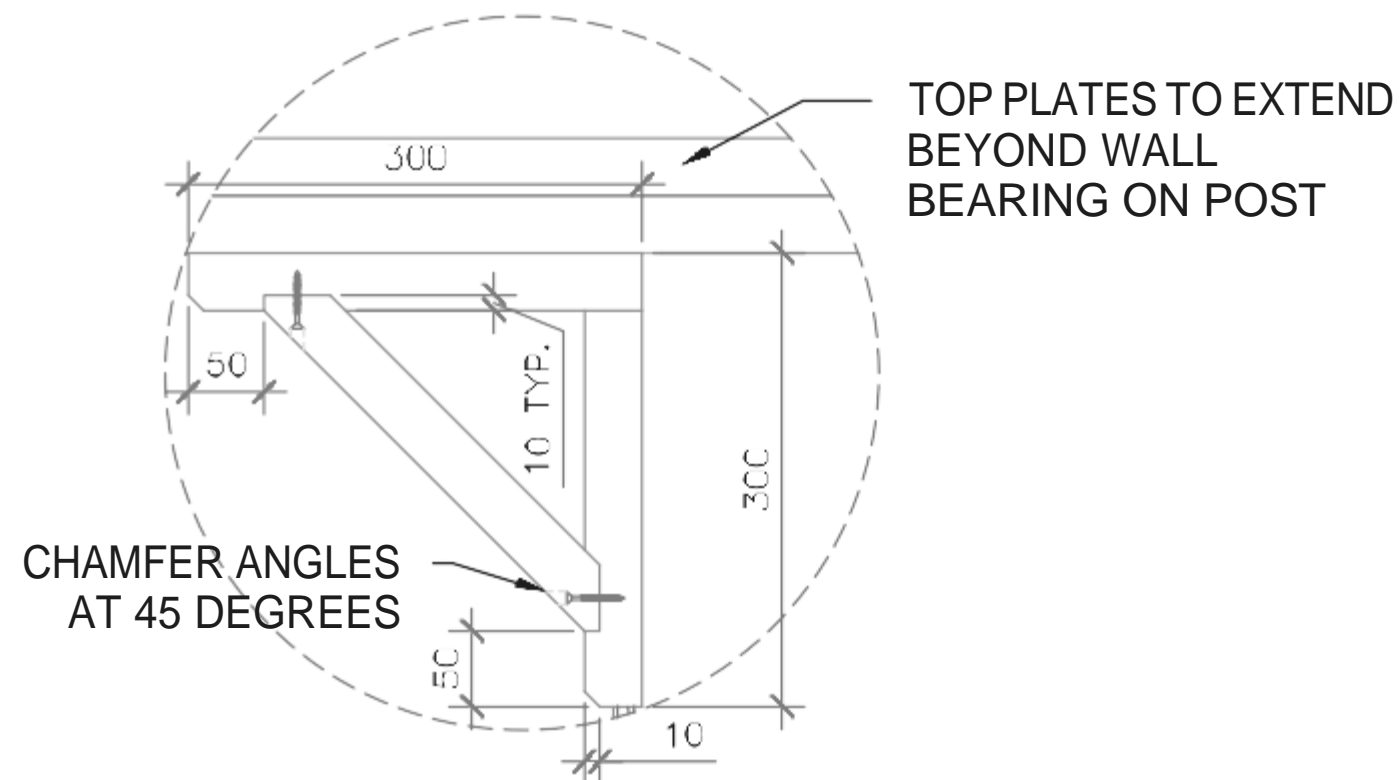
No.	Revision/Issue	Date
9	REVISIONS	SEPT. 12
...	...	...
2	REVISIONS	DEC.12
1	DRAFT	NOV. 12

**SKILLS  
CANADA**

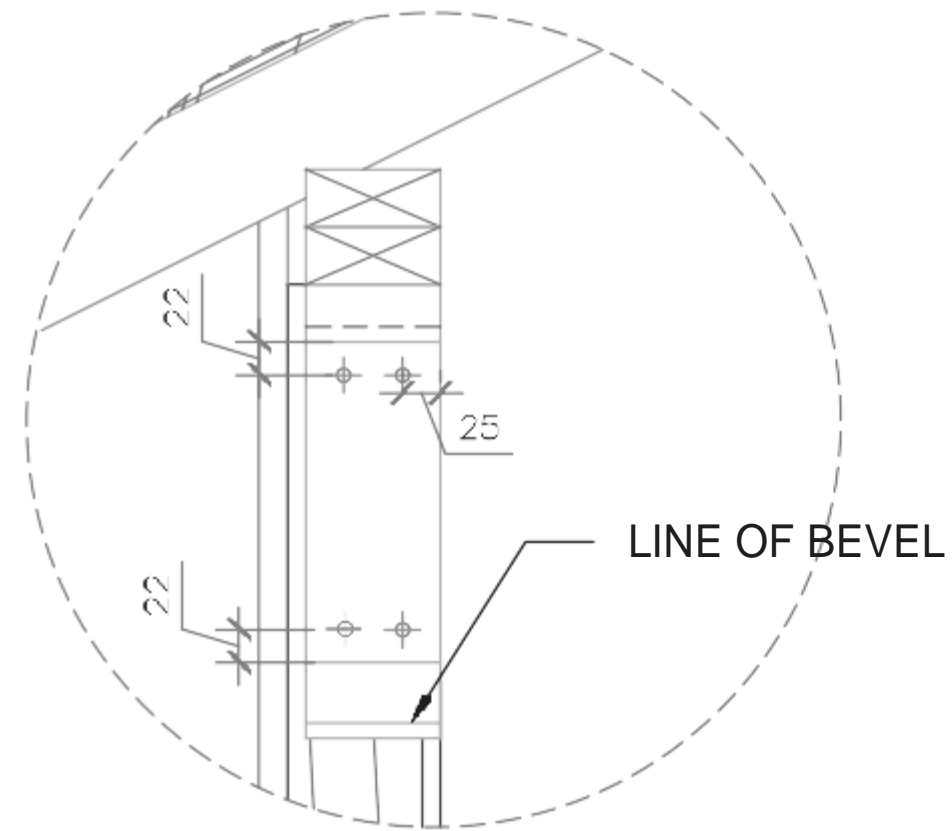
**CARPENTRY  
POST  
SECONDARY**

**DETAILS  
VERSION 2**

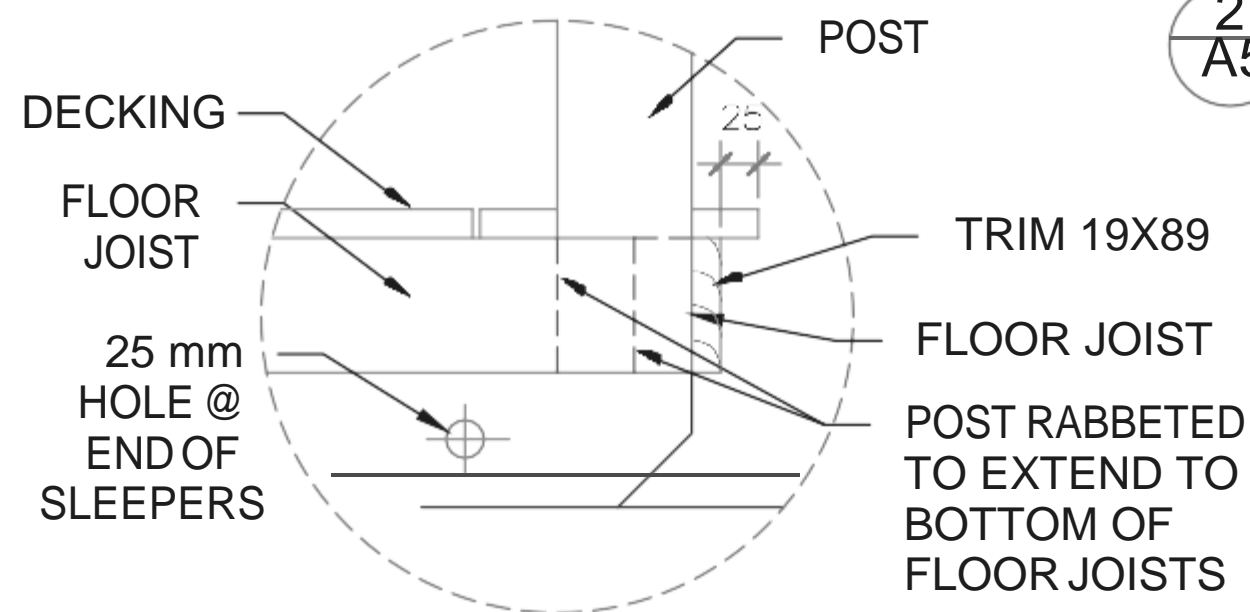
DRAWN BY: I. DUPLESSIS	SHEET #
DATE: SCNC2020	A9
SCALE: AS NOTED	



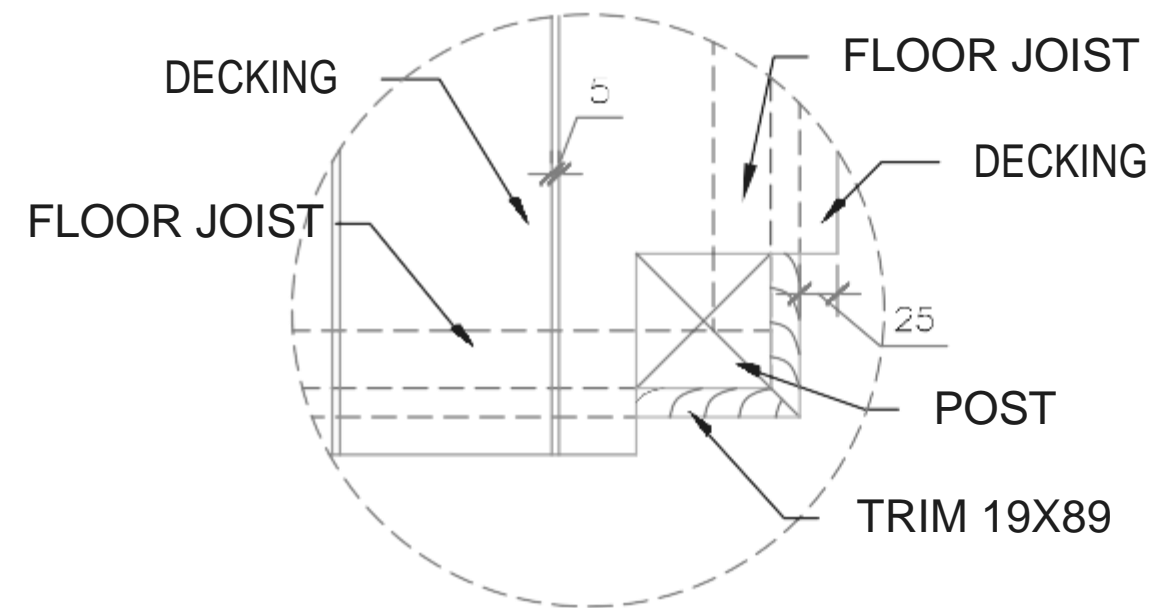
1 ARCHITECTURAL BRACKET DETAIL-A  
A5



2 ARCHITECTURAL BRACKET DETAIL-B  
A5



3 FLOOR JOISTS AT FRONT POSTS  
A4



4 DECKING AT FLOOR JOISTS  
A3

General Notes  
FOR EDUCATIONAL  
PURPOSE ONLY  
1)

No.	Revision/Issue	Date
9	REVISIONS	SEPT. 12
...	...	...
2	REVISIONS	DEC. 12
1	DRAFT	NOV. 18

SKILLS  
CANADA

CARPENTRY  
POST  
SECONDARY

DETAILS  
VERSION 2

DRAWN BY: I. DU PLESSIS	SHEET #
DATE: SCNC2020	A1C
SCALE: AS NOTED	