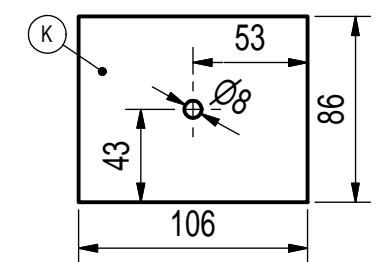
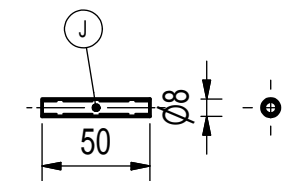
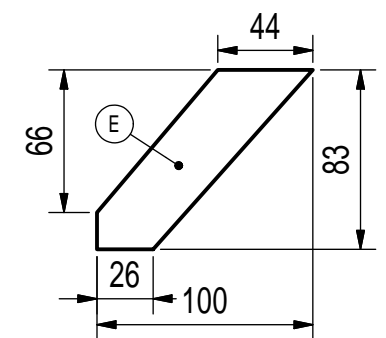
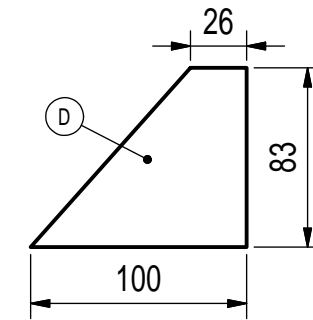
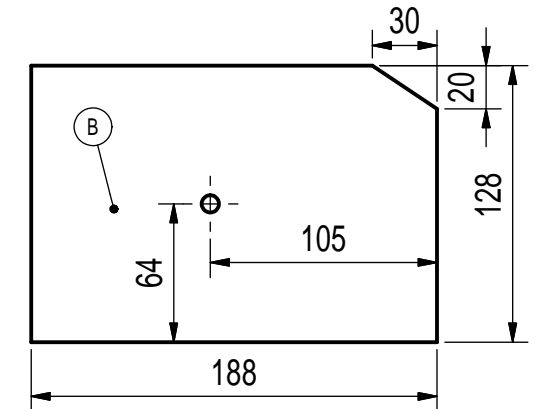
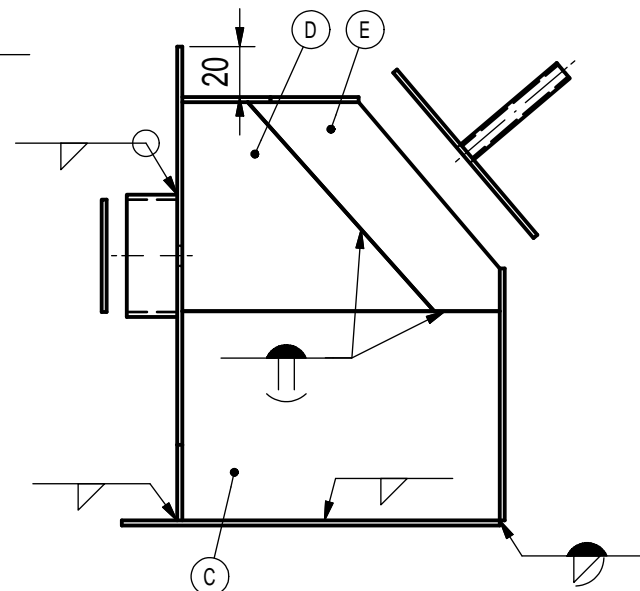
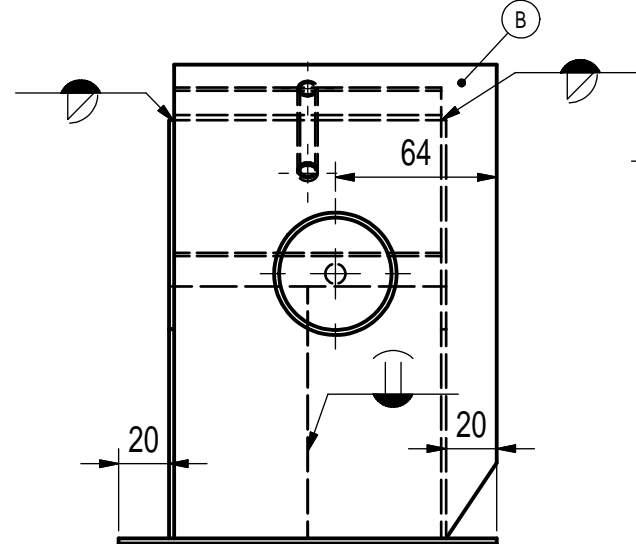
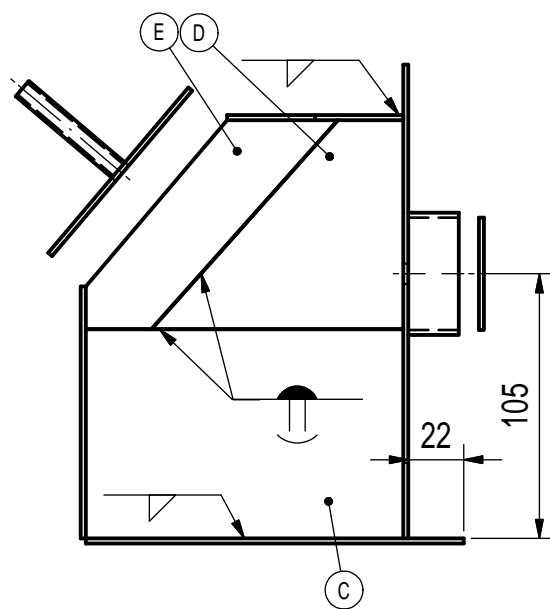
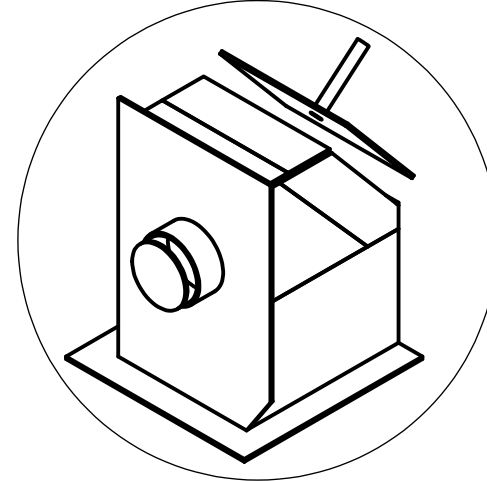
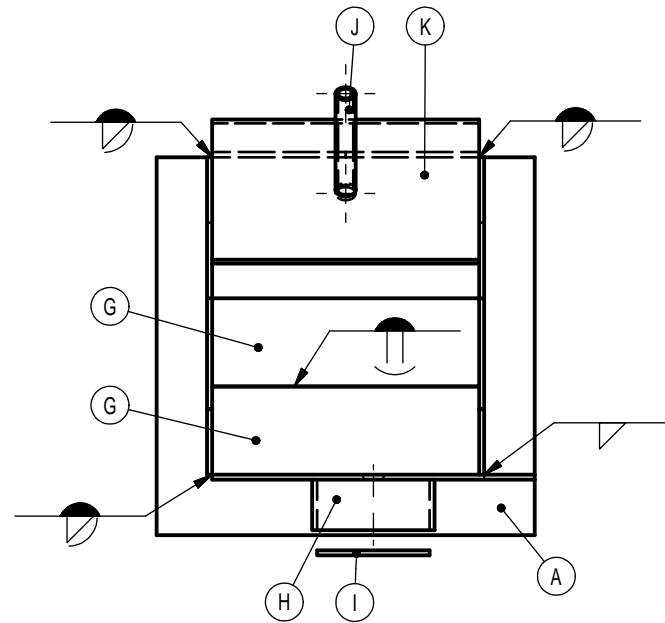
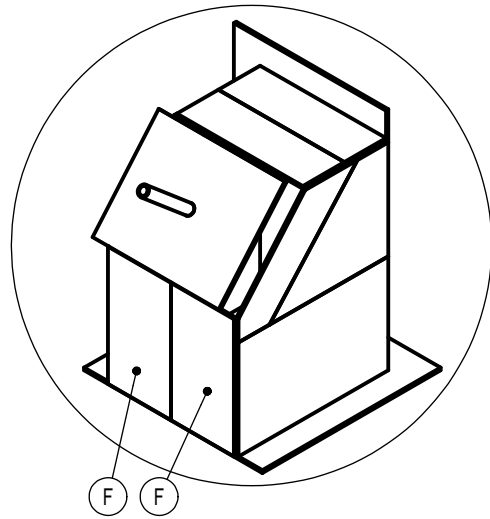


Item	Q'ty	Descriptions
A	1	150X150X2.0, AISI 304 STAINLESS STEEL SHEET
B	1	188X128X2.0, AISI 304 STAINLESS STEEL SHEET, CUT AS PER SKETCH
C	2	126X83X2.0, AISI 304 STAINLESS STEEL SHEET
D	2	100X83X2.0, AISI 304 STAINLESS STEEL SHEET, TRAPEZOID CUT AS PER SKETCH
E	2	100X83X2.0, AISI 304 STAINLESS STEEL SHEET, CUT AS PER SKETCH
F	2	100X53X2.0, AISI 304 STAINLESS STEEL SHEET
G	2	106X35X2.0, AISI 304 STAINLESS STEEL SHEET
H	1	Ø 48.6X20X2.0, AISI 304 STAINLESS STEEL PIPE
I	1	Ø 44.6X2.0, AISI 304 STAINLESS STEEL SHEET FOR PURGING
J	1	Ø 8.0X50X1.0, AISI 304 STAINLESS STEEL TUBE FOR PURGING
K	1	106X86X2.0, AISI 304 STAINLESS STEEL SHEET WITH Ø 8.0 DRILLED HOLE AS PER SKETCH



### INSTRUCTIONS TO COMPETITORS

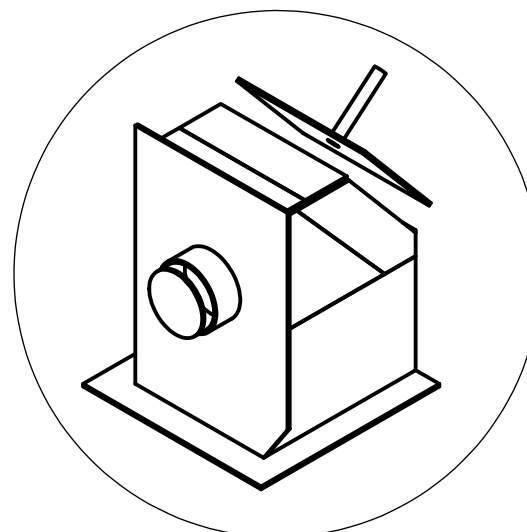
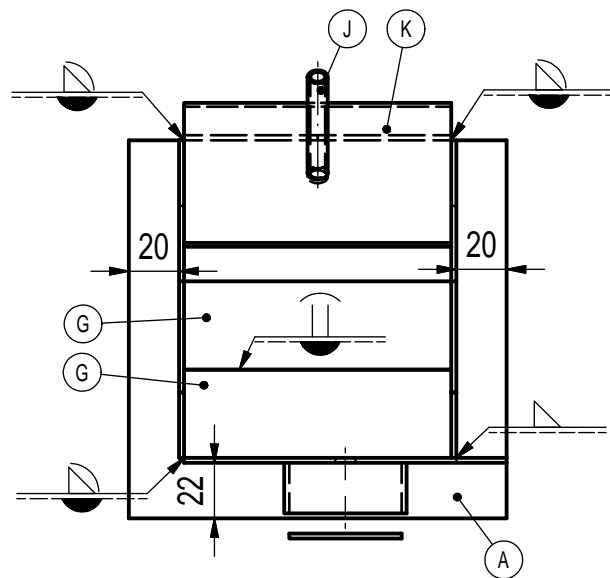
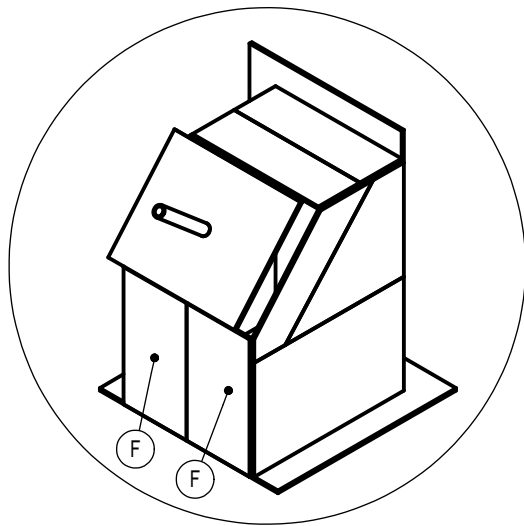
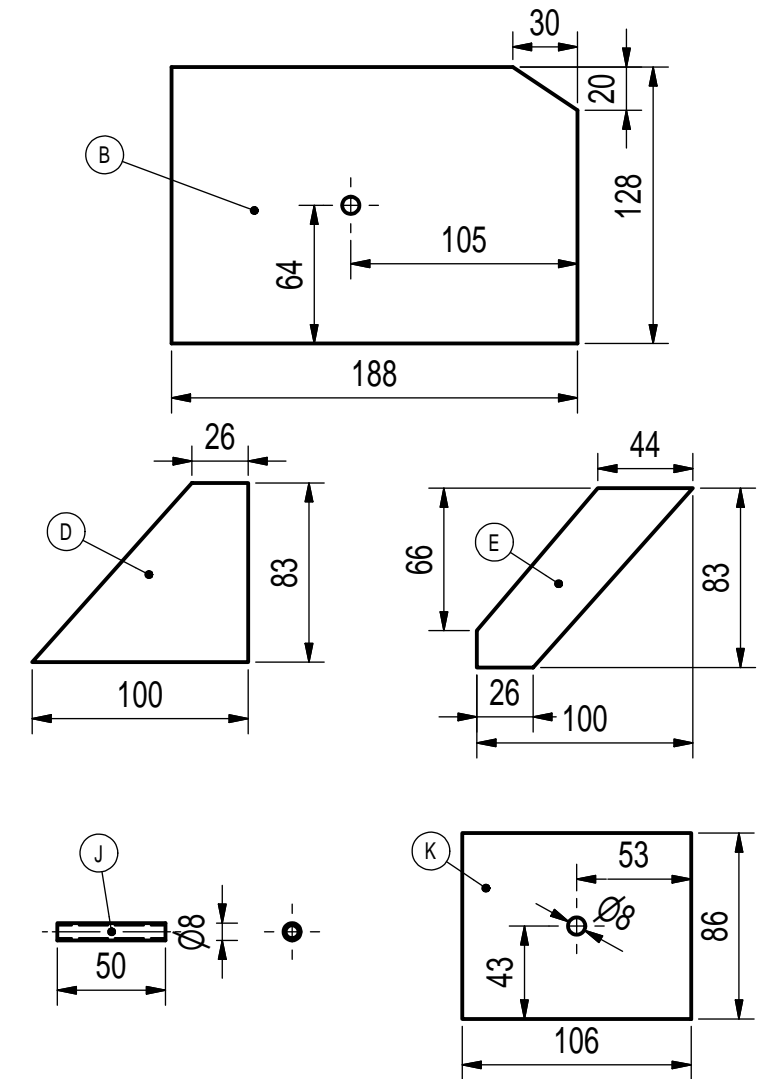
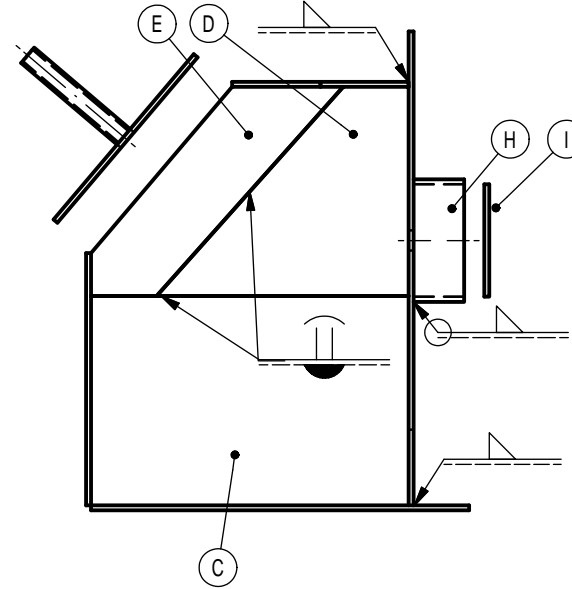
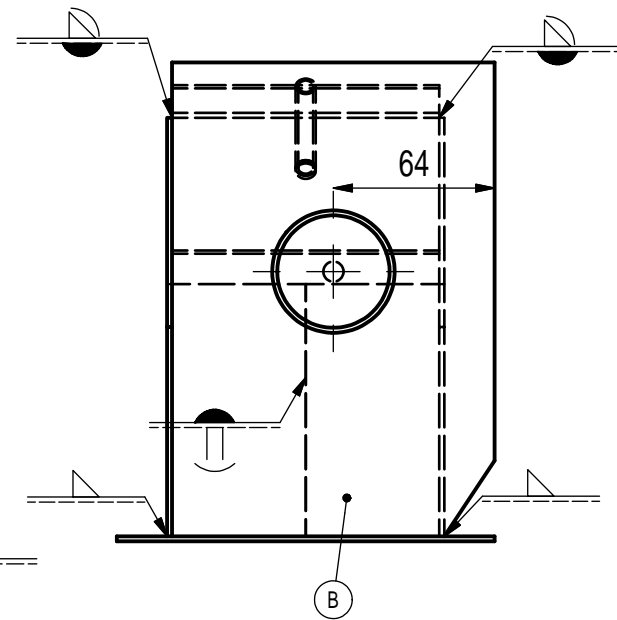
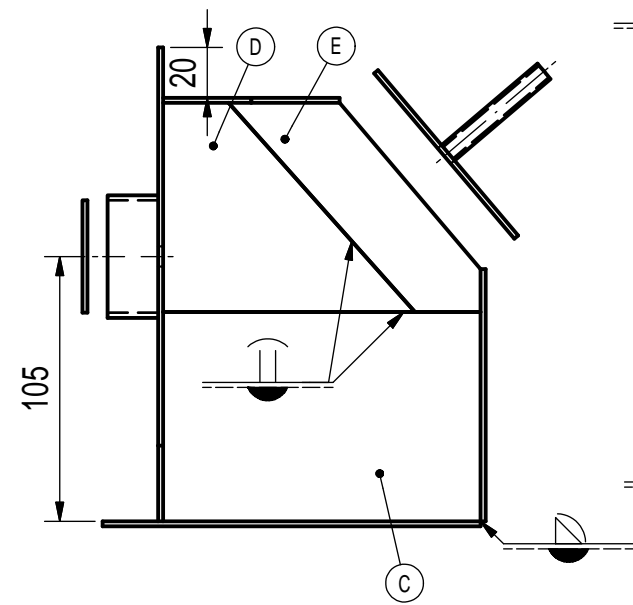
1. WELDING PROCESS : ISO 4063-141 (AWS A3.0 GTAW)
2. WELDING POSITIONS: ALL EXCEPT VERTICAL DOWN .
3. NO GAPS ARE ALLOWED ON BUTT & CORNER WELD JOINTS AND SHALL HAVE FULL PENETRATIONS.
4. ALL THE WELDING TO BE CARRIED OUT WITH BASE PLATE "A" IN THE FLAT POSITION.
5. ALL LEG SIZES OF FILLET WELDS: 3.0 mm WITH TOLERANCE (+1.0 mm/-0.0 mm).
6. OUTSIDE CORNER WELD RADII TO BE JUDGEMENT ASSESSED WITH GRADE (0,1,2,3).
7. ALL WELDS SHALL BE COMPLETED IN ONLY ONE PASS WITH FILLER ROD ADDED.
8. PURGING PLATES AND TUBE TO BE REMOVED AFTER WELDING.

NOTE: ALL DIMENSTIONS IN MILLIMETRE

Test Project for the 46<sup>th</sup> WorldSkills  
Competition in Shanghai, China 2021.  
Copyright © 2021 WorldSkills International.  
All Rights Reserved.



Skill: 10. 焊接, Welding, Schweißen, Soudage			
Scale: N. T. S	Date: 19. June. 2020	Paper: A3	
Drawn/Designed by: Chih-Peng Chen TW / Takeshi Tokimatsu JP			Drawing No: WSC2021_TP10_JP_SS_ASSEMBLY_ISO A
Description: Stainless Steel Structure-Assembly			Rev: 1
			Page:
			Appd:
			Sign:



Item.	Qty	Descriptions
K	1	106X86X2.0, AISI 304 STAINLESS STEEL SHEET WITH Ø 8.0 DRILLED HOLE AS PER SKETCH
J	1	Ø 8.0X50X1.0, AISI 304 STAINLESS STEEL TUBE FOR PURGING
I	1	Ø 44.6X2.0, AISI 304 STAINLESS STEEL SHEET FOR PURGING
H	1	Ø 48.6X20X2.0, AISI 304 STAINLESS STEEL PIPE
G	2	106X35X2.0, AISI 304 STAINLESS STEEL SHEET
F	2	100X53X2.0, AISI 304 STAINLESS STEEL SHEET
E	2	100X83X2.0, AISI 304 STAINLESS STEEL SHEET, CUT AS PER SKETCH
D	2	100X83X2.0, AISI 304 STAINLESS STEEL SHEET, TRAPEZOID CUT AS PER SKETCH
C	2	126X83X2.0, AISI 304 STAINLESS STEEL SHEET
B	1	188X128X2.0, AISI 304 STAINLESS STEEL SHEET, CUT AS PER SKETCH
A	1	150X150X2.0, AISI 304 STAINLESS STEEL SHEET

### INSTRUCTIONS TO COMPETITORS

1. WELDING PROCESS : ISO 4063-141 (AWS A3.0 GTAW)
2. WELDING POSITIONS: ALL EXCEPT VERTICAL DOWN. .
3. NO GAPS ARE ALLOWED ON BUTT & CORNER WELD JOINTS AND SHALL HAVE FULL PENETRATIONS.
4. ALL THE WELDING TO BE CARRIED OUT WITH BASE PLATE "A" IN THE FLAT POSITION.
5. ALL LEG SIZES OF FILLET WELDS: 3.0 mm WITH TOLERANCE (+1.0 mm/-0.0 mm).
6. OUTSIDE CORNER WELD RADII TO BE JUDGEMENT ASSESSED WITH GRADE (0,1,2,3).
7. ALL WELDS SHALL BE COMPLETED IN ONLY ONE PASS WITH FILLER ROD ADDED.
8. PURGING PLATES AND TUBE TO BE REMOVED AFTER WELDING.

NOTE: ALL DIMENSTIONS IN MILLIMETRE

Test Project for the 46<sup>th</sup> WorldSkills  
Competition in Shanghai, China 2021.  
Copyright © 2021 WorldSkills International.  
All Rights Reserved.



Skill: 10. 焊接, Welding, Schweißen, Soudage			OR		
Scale: N. T. S	Date: 19. June. 2020	Paper: A3	Drawing No: WSC2021_TP10_JP_SS_ASSEMBLY_ISO E		
Drawn/Designed by: Chih-Peng Chen TW / Takeshi Tokimatsu JP			Rev: 1	Page:	
Description: Stainless Steel Structure-Assembly			Appd:	Sign:	