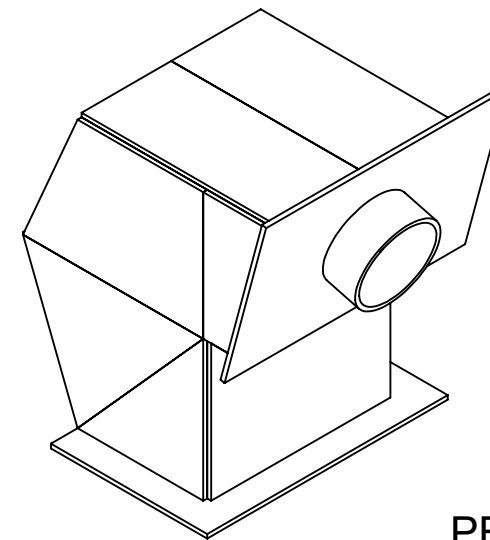
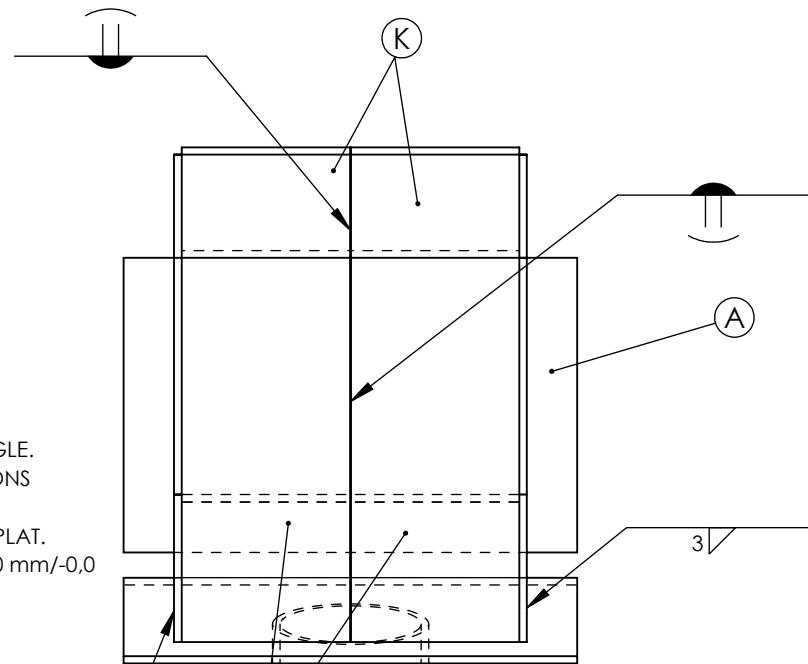


INSTRUCTIONS TO COMPETITORS

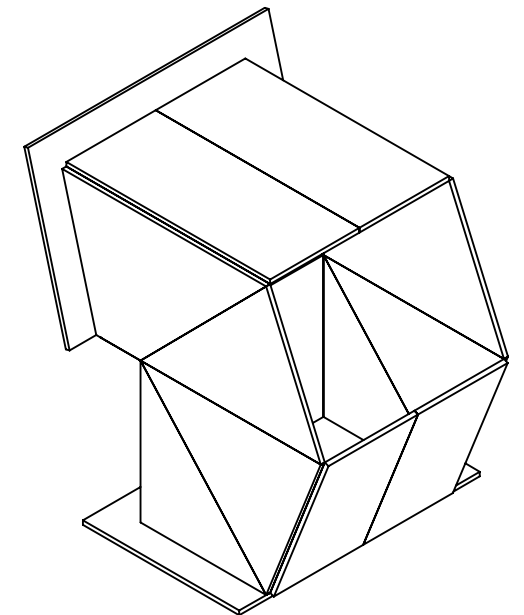
1. WELDING PROCESS: ISO 4063-141 (AWS A3.0 GTAW)
2. WELDING POSITIONS: ALL EXCEPT VERTICAL DOWN.
3. NO GAPS ARE ALLOWED ON THE BUTT & CORNER WELD JOINTS.
4. ALL BUTT & CORNER WELDS SHALL HAVE FULL PENETRATIONS.
5. ALL THE WELDING TO BE CARRIED OUT WITH BASE PLATE "A" IN THE FLAT POSITION.
6. ALL LEG SIZES OF FILLET WELDS: 4.0 mm WITH TOLERANCE (+2.0 mm/-0.0 mm).
7. OUTSIDE CORNER WELD RADII TO BE JUDGEMENT ASSESSED WITH GRADE (0,1,2,3).
8. ALL WELDS SHALL BE COMPLETED IN ONLY ONE PASS WITH FILLER ROD ADDED.

INSTRUCTIONS AUX CONCURRENTS

1. PROCÉDÉ DE SOUDAGE : ISO 4063-141 (AWS A3.0 GTAW)
2. POSITIONS DE SOUDAGE : TOUTES SAUF VERTICALES DESCENDANT.
3. AUCUN ÉCART N'EST AUTORISÉ SUR LES JOINTS DE SOUDURE BOUT À BOUT ET D'ANGLE.
4. TOUTES LES SOUDURES BOUT À BOUT ET EN ANGLE DOIVENT AVOIR DES PÉNÉTRATIONS COMPLÈTES.
5. TOUTES LES SOUDURES DOIVENT ÊTRE EFFECTUÉES AVEC LA PLAQUE DE BASE "A" À PLAT.
6. TOUTES LES DIMENSIONS DES SOUDURES D'ANGLE : 4,0 mm AVEC TOLÉRANCE (+2,0 mm/-0,0 mm).
7. RAYONS DE SOUDURE DES COINS EXTÉRIEURS À ÉVALUER AU JUGEMENT SELON LES DIMENSINS 0,1,2,3).
8. TOUTES LES SOUDURES DOIVENT ÊTRE EFFECTUÉES EN UN SEUL PASSE AVEC MÉTAL D'APPORT



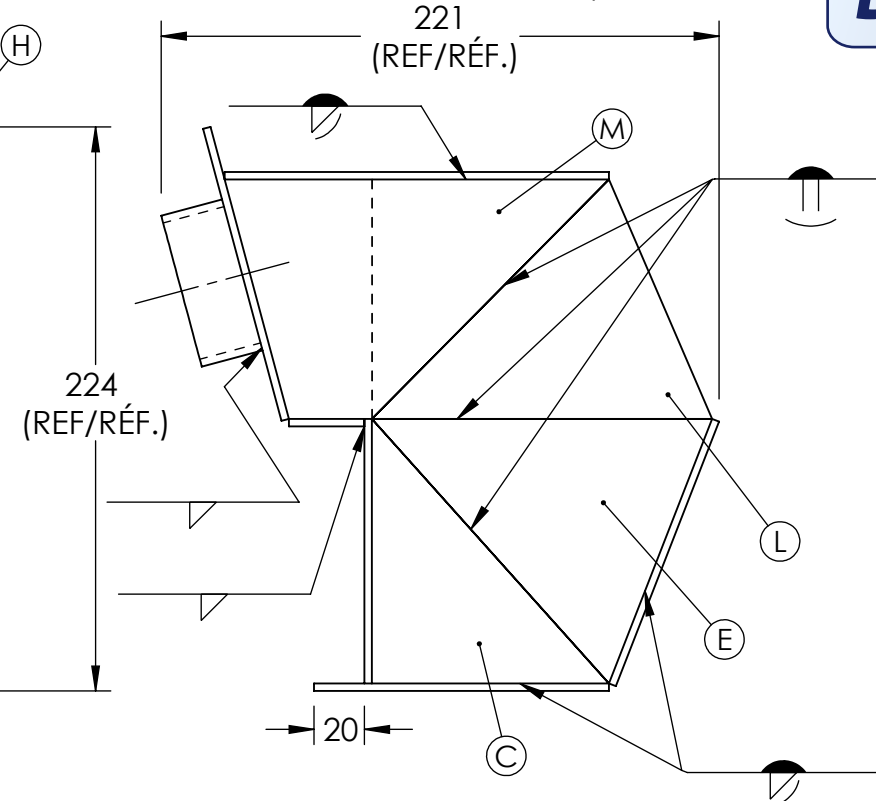
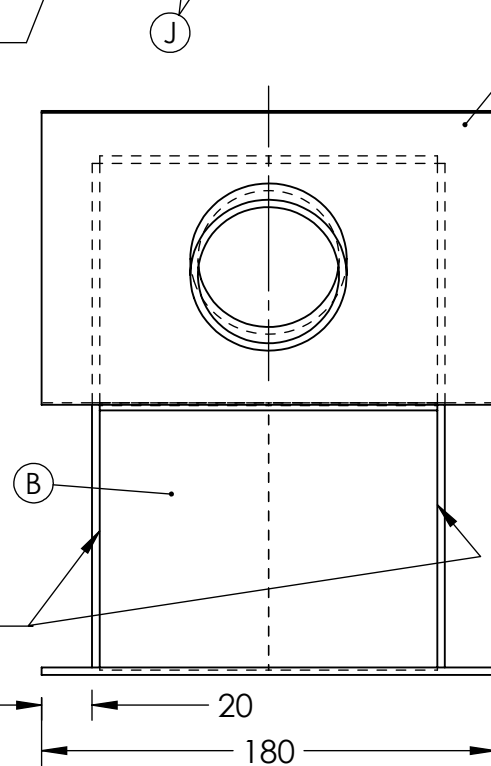
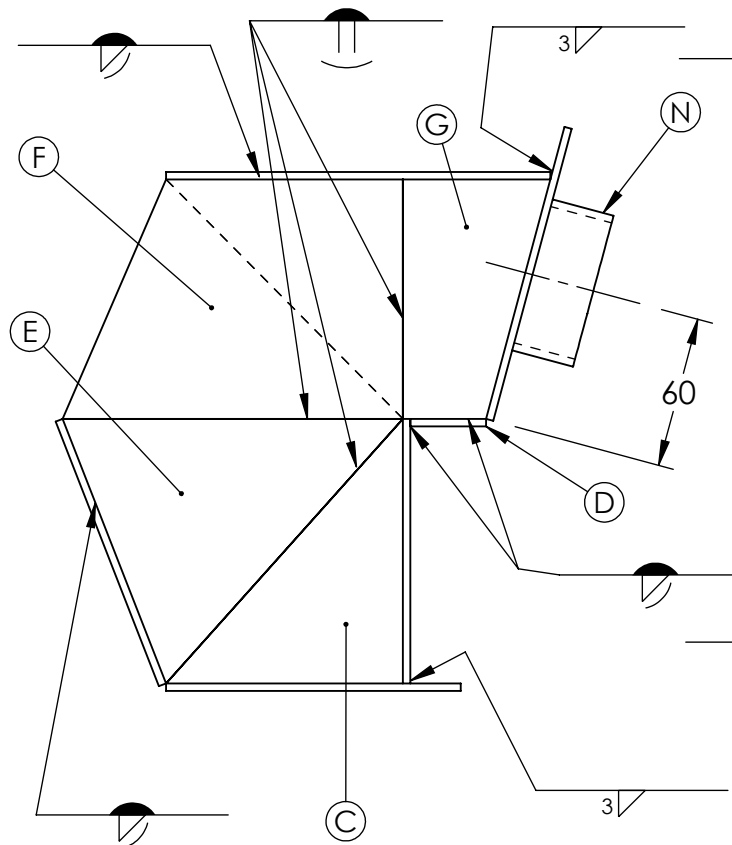
ISOMETRIC VIEW A /
VUE ISOMÉTRIQUE A
SCALE / ÉCHELLE 1:3



ISOMETRIC VIEW B /
VUE ISOMÉTRIQUE B
SCALE / ÉCHELLE 1:3

PROJET

DRAFT



ITEM	QTY	Épaisseur T	LARGEUR W	LONGUEUR L	POIDS TOTAL Total Wt	UNITÉ Wt Units
A	1	3	117	180	0.17	kg
B	1	3	105	134	0.11	kg
C	2	3	94	105	0.16	kg
D	1	3	30	134	0.03	kg
E	2	3	105	135	0.23	kg
F	1	3	95	135	0.10	kg
G	1	3	59	95	0.05	kg
H	1	3	120	180	0.17	kg
J	1	3	67	153	0.08	kg
K	2	3	67	113	0.12	kg
L	1	3	95	135	0.10	kg
M	1	3	95	135	0.10	kg
N	1				0.04	kg
					1.33	kg

ALL DIMENSIONS IN MILLIMETERS/TOUTES LES DIMENSIONS SONT EN MILLIMÈTRES



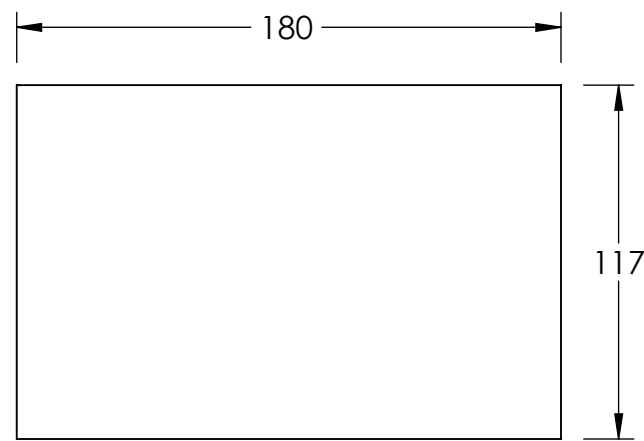
TITLE-TITRE: SCNC 2023 - POST-SECONDARY DAY 2 OCMT 2023 - POST-SECONDAIRE JOUR 2 WORLD AL. ASSEMBLY /ALUMIMIUM DU MONDIAL -ASSEMBLAGE		SHEET # NO. DE PAGE: 1 OF/DE 2		SIZE/TAILLE: B	
DWG. DESSIN NO.: SCC2023-PSP-2b	RÉV.: 1	SCALE ÉCHELLE: 1:3	DESIGN BY: <u>DRAWN BY:</u> DATE:	LIU JINGFENG J. HYDE 2022-12-01	

4

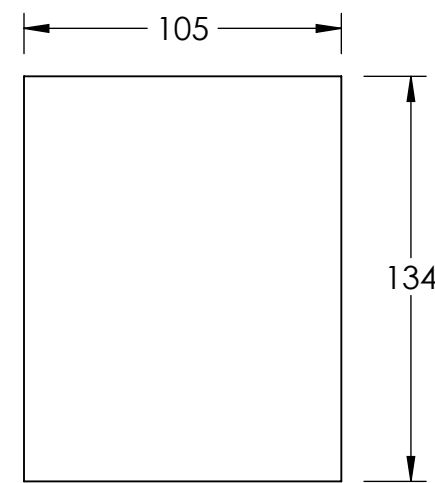
3

2

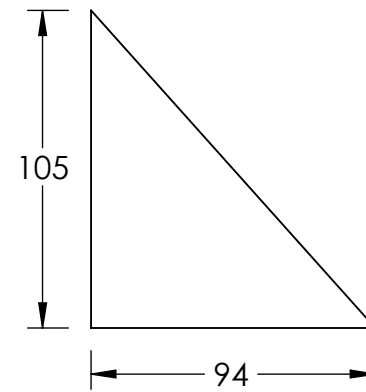
1



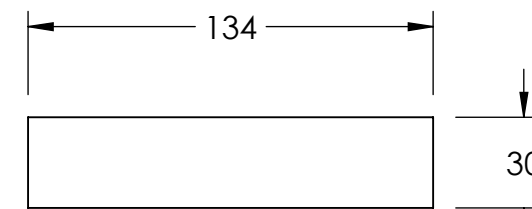
ITEM A



ITEM B

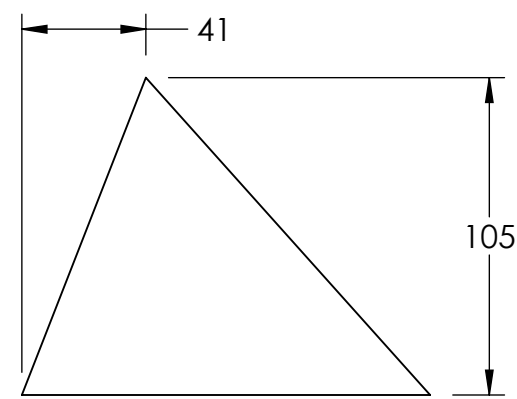


ITEM C

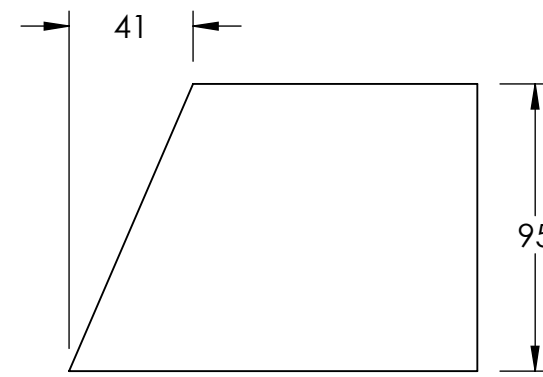


ITEM D

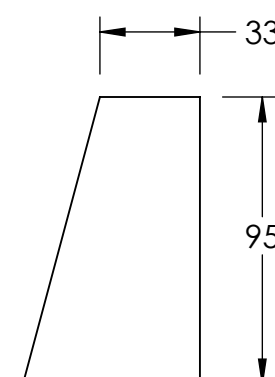
ITEM	QTY	T	W	L	Total Wt	Wt Units
A	1	3	117	180	0.17	kg
B	1	3	105	134	0.11	kg
C	2	3	94	105	0.16	kg
D	1	3	30	134	0.03	kg
E	2	3	105	135	0.23	kg
F	1	3	95	135	0.10	kg
G	1	3	59	95	0.05	kg
H	1	3	120	180	0.17	kg
J	1	3	67	153	0.08	kg
K	2	3	67	113	0.12	kg
L	1	3	95	135	0.10	kg
M	1	3	95	135	0.10	kg
N	1	ALUMINIUM			0.04	kg
					1.33	kg



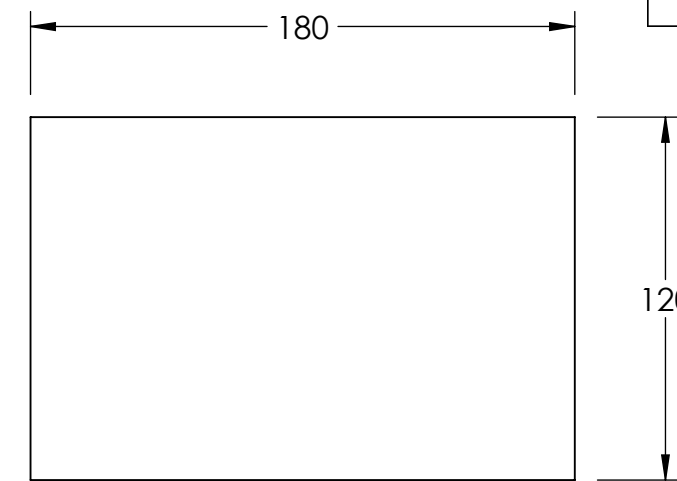
ITEM E



ITEM F

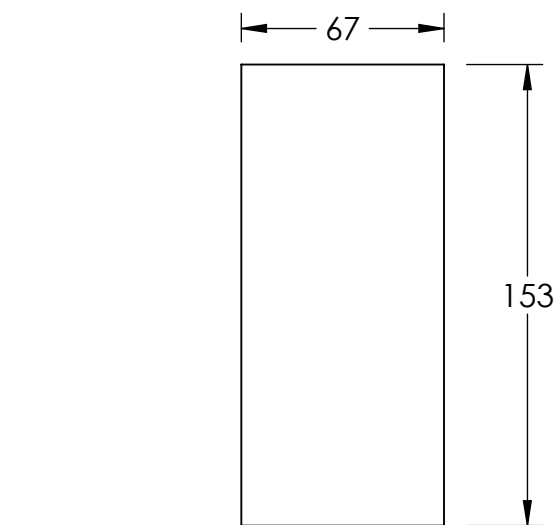


ITEM G

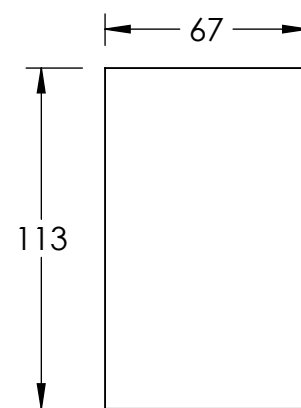


ITEM H

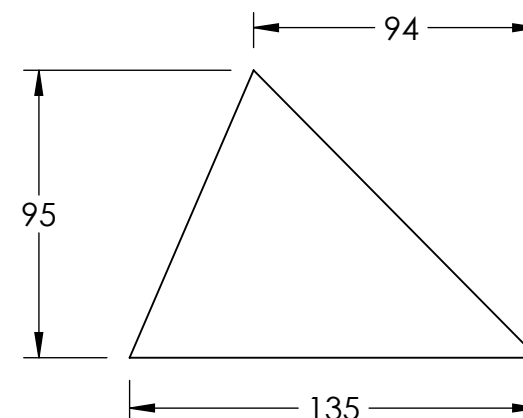
DRAFT



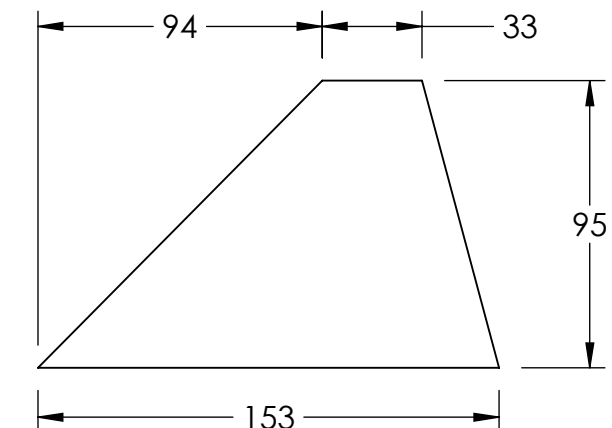
ITEM J



ITEM K



ITEM L



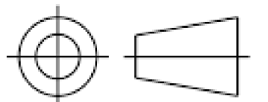
ITEM M

ALL DIMENSIONS IN MILLIMETERS/TOUTES LES DIMENSIONS SONT EN MILLIMÈTRES



WINNIPEG 2023

TITLE-TITRE: SCNC 2023 - POST-SECONDARY DAY 2 OCMT 2023 - POST-SECONDAIRE JOUR 2 WORLD AL.PARTS / ALUMINIUM DU MONDIAL- LES PIÈCES				SHEET # NO. DE PAGE: 2 OF 2	SIZE/TAILLE: B
DWG. DESSIN NO.: SCC2023-PSP-2b	RÉV.: 1	SCALE ÉCHELLE: 1:2.5	DESIGN BY: T. PUNTON	DRAWN BY: J. HYDE	DATE: 2022-12-01



4

3

2

1