

4

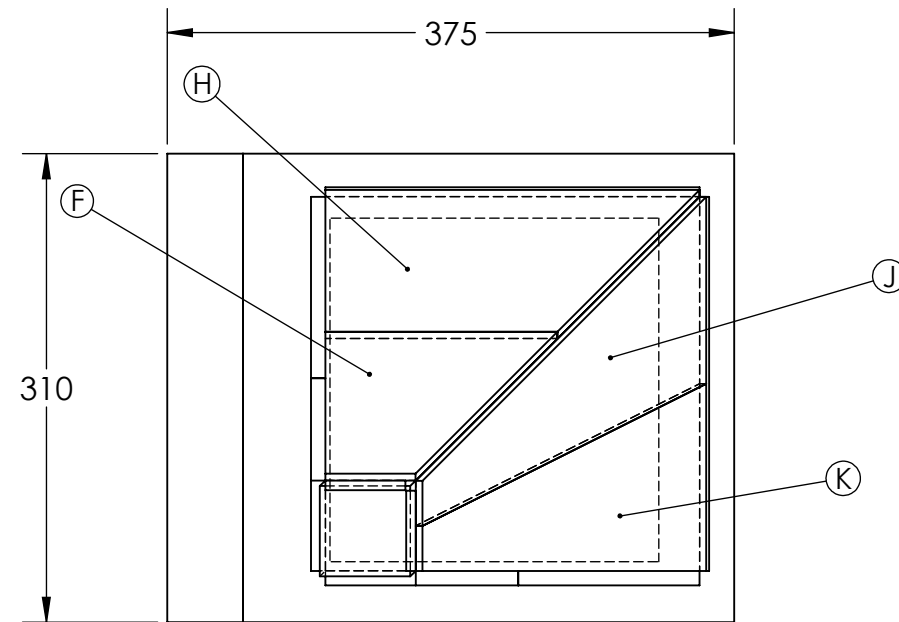
3

2

1

NOTE:
ALL DIMENSIONS IN MILLIMETERS / KILOGRAMS
ALL MATERIAL MILD STEEL
SEE OTHER SHEETS FOR PARTS AND WELDING DETAILS

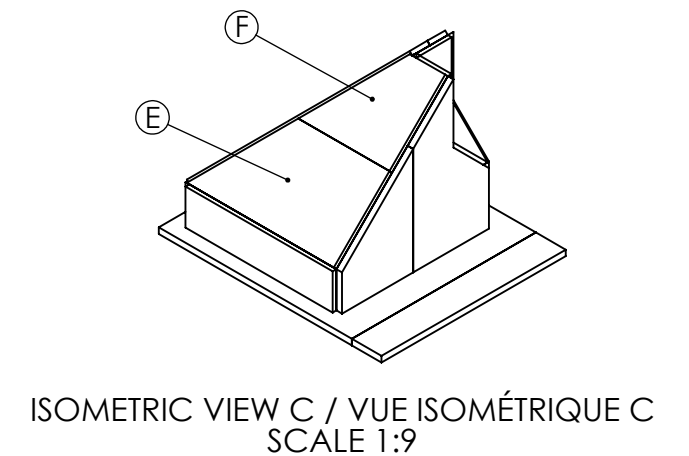
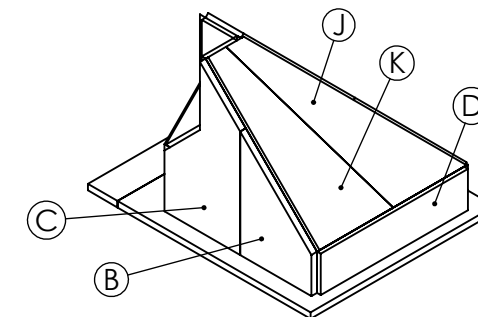
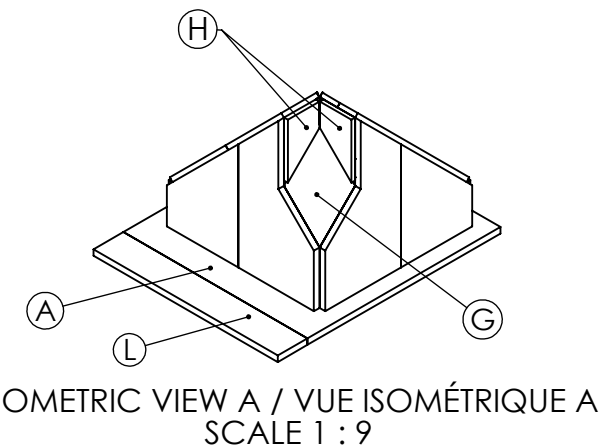
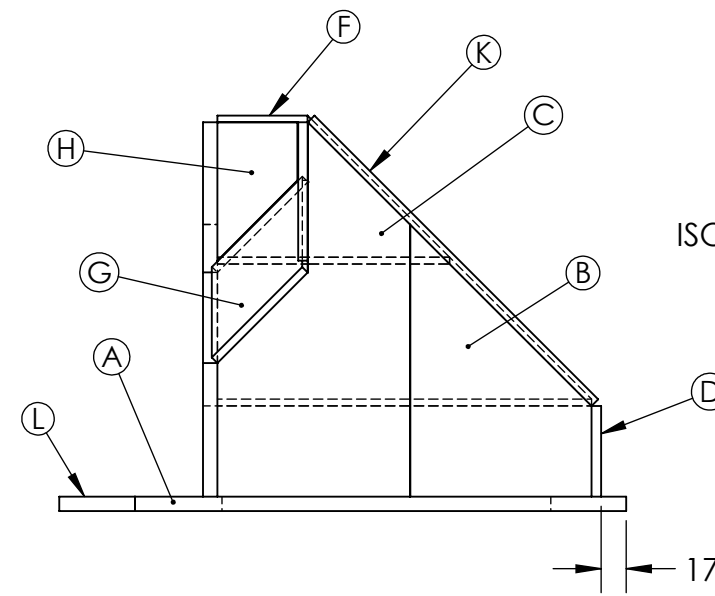
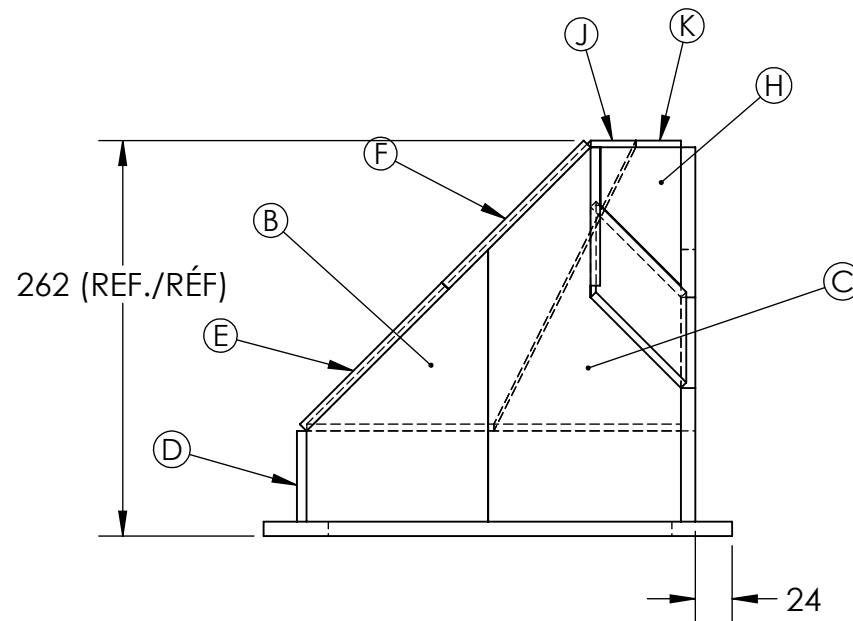
NOTE:
TOUTES LES DIMENSIONS EN MILLIMÈTRES / KILOGRAMMES
TOUS LES MATÉRIAUX EN ACIER DOUX
VOIR LES AUTRES PAGES POUR LES PIÈCES ET LES DÉTAILS DE SOUDURE



PLAN
DRAFT

BILL OF MATERIALS- LISTE DES MATÉRIAUX

ITEM	DESCRIPTION	QTY/QTÉ	KG
A	PL 9.53 X 310 X 375	1	7.5
B	PL 9.53 X 120 X 180	2	SEE PG 3 NOTE / VOIR LA NOTE À LA PAGE 3
C	PL 6.35 X 128 X 248	2	4.7
D	PL 6.35 X 60 X 248	2	1.5
E	PL 6.35 X 133 X 248	1	1.6
F	PL 6.35 X 133 X 154	1	1.0
G	PL 6.35 X 85 X 142	1	0.6
H	PL 6.35 X 53 X 92	2	0.5
J	PL 6.35 X 101 X 342	1	1.7
K	PL 6.35 X 124 X 265	1	1.6
L	PL 9.53 X 50 X 310	1	1.2
TOTAL ESTIMATED WEIGHT / POIDS TOTAL ESTIMÉ:			22



ALL DIMENSIONS IN MILLIMETERS/TOUTES LES DIMENSIONS SONT EN MILLIMÈTRES




SkillsCompétences
Canada
Winnipeg2023

TITLE / TITRE: SCNC 2023 - SECONDARY DAY 1 OCMT 2023 - SECONDAIRE JOUR 1 MINT /TIRELIRE		SHEET # NO. DE PAGE: 1 OF 3	SIZE/TAILLE: B
DWG. DESSIN NO.: SC2023-SP-1	REV.: 1	SCALE ÉCHELLE: 1:5	CONCEPTION/ DESIGN BY: T. PUNTON DESSINÉPAR J. HYDE DRAWN BY: DATE: 2022-11-15

4

3

2

1

4

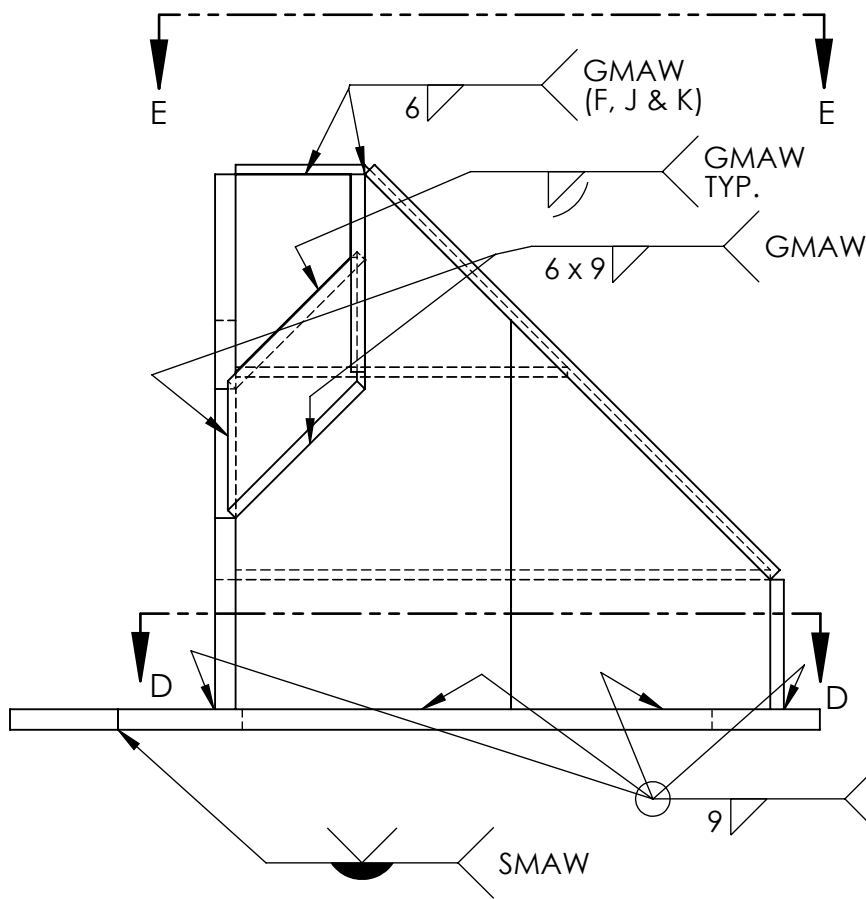
3

2

1

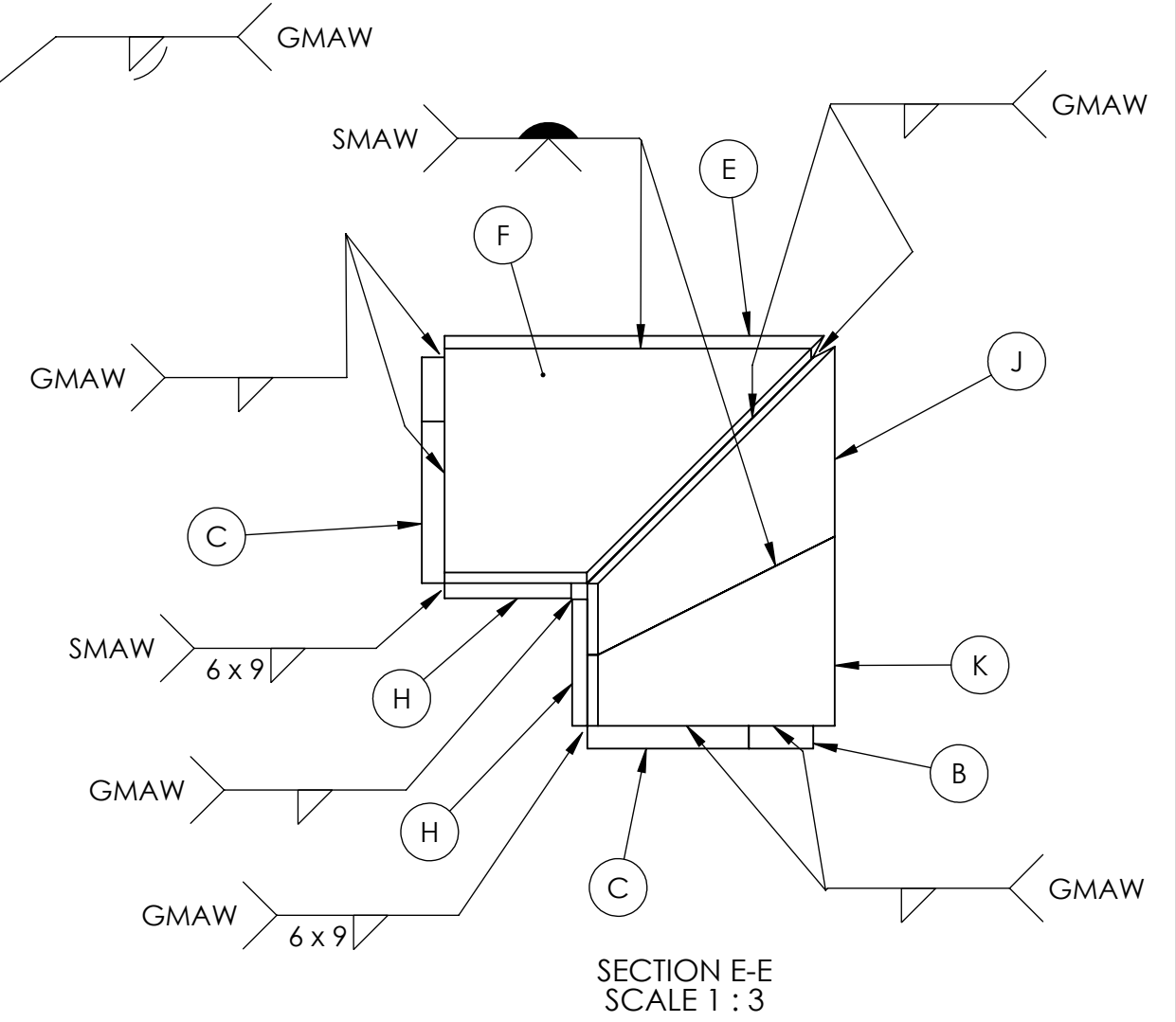
DRAFT

GMAW ROOT
SMAW CAP
RACINE AU GMAW
ET FINITION AU
SMAW



SMAW ROOT
SMAW CAP

SECTION D-D
SCALE
ÉCHELLE 1 :
3.5



NOTE:

- ALL WELDING MUST BE DONE WITH BASE PLATE "A" SITTING FLAT ON TABLE / LA PLAQUE D'ASSISE « A » DOIT ÊTRE À PLAT SUR LA TABLE DURANT TOUTES LES ACTIVITÉS DE SOUDURE
- TACK ENTIRE PROJECT PRIOR TO STARTING WELDS, YOU MUST OBTAIN A SIGN-OFF FROM THE TECHNICAL COMMITTEE AFTER FITTING AND BEFORE WELDING / POINTER TOUS LES COMPOSANTS ENSEMBLE AVANT DE COMMENCER LE SOUDAGE, VOUS DEVEZ OBTENIR L'APPROBATION DU COMITÉ TECHNIQUE APRÈS L'ASSEMBLAGE ET AVANT LE SOUDAGE
- GAP AND LAND FOR PREPARED VEE AND BEVEL GROOVE WELDS --> YOUR CHOICE / ÉCARTEMENT CHANFREIN POUR LES SOUDURES --> À VOTRE DISCRÉTION
- ALL VERTICAL WELDING TO BE DONE IN UPHILL PROGRESSION, UNLESS OTHERWISE NOTED / TOUTES LES SOUDURES VERTICALES DOIVENT ÊTRE EXÉCUTÉES EN MONTANT À MOINS D'INDICATION CONTRAIRE

ALL DIMENSIONS IN MILLIMETERS/TOUTES LES DIMENSIONS SONT EN MILLIMÈTRES



TITLE: SCNC 2023 - SECONDARY DAY 1 OCMT 2023 - SECONDAIRE JOUR 1 MINT / TIRELIRE- WELDS / SOUDURES		SHEET # NO. DE PAGE: 2 OF 3	SIZE/TAILLE: B
DWG. NO.: SC2023-SP-1	REV.: 0	SCALE ÉCHELLE: NTS	DESIGN BY: T. PUNTON DRAWN BY: J. HYDE DATE: 2022-06-05

4

3

2

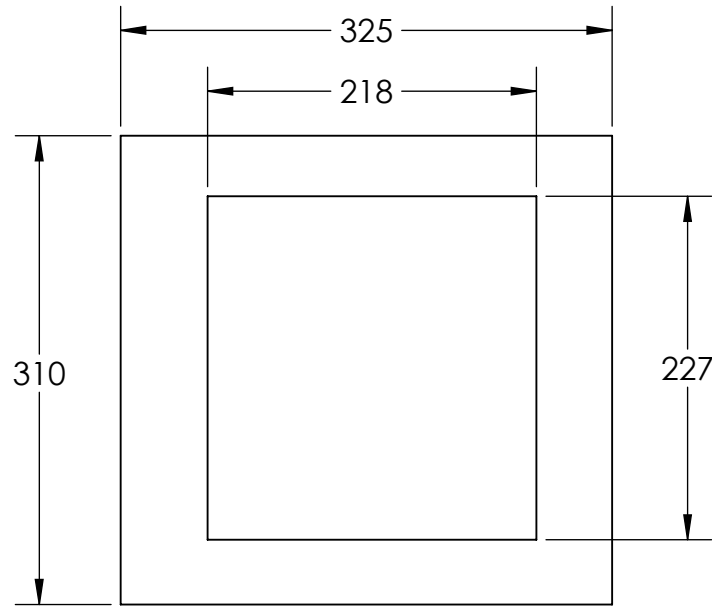
1

4

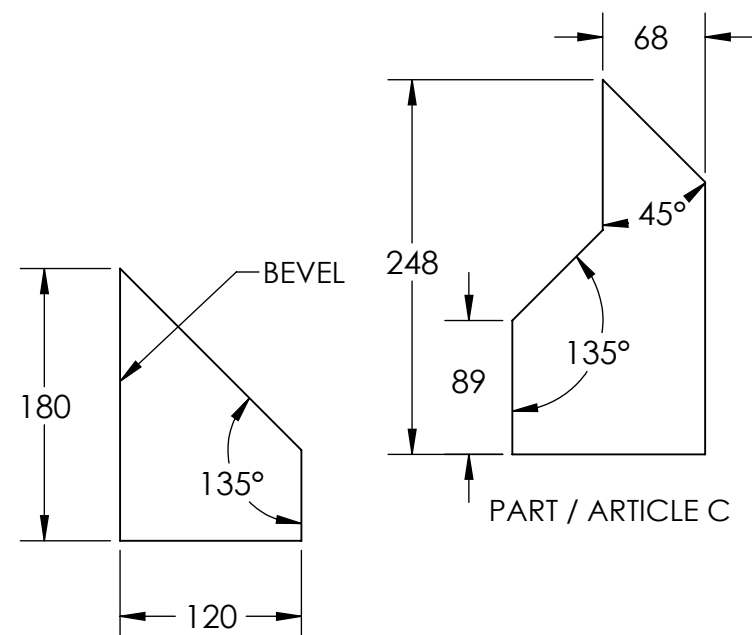
3

2

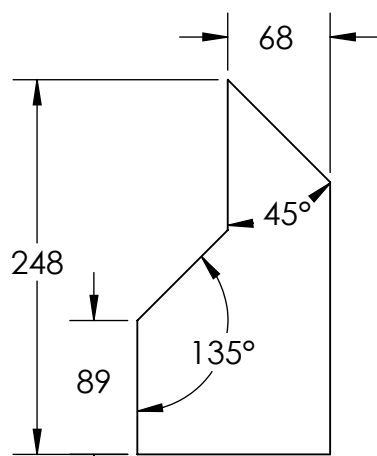
1



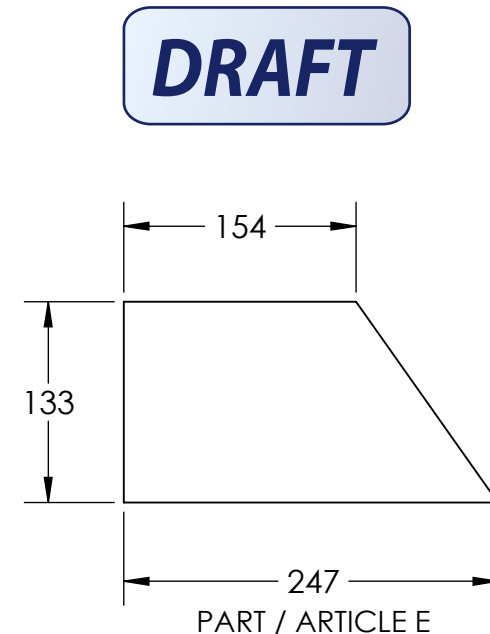
PART / ARTICLE A



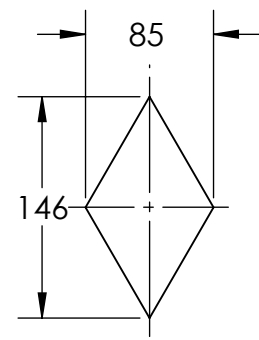
PART / ARTICLE B



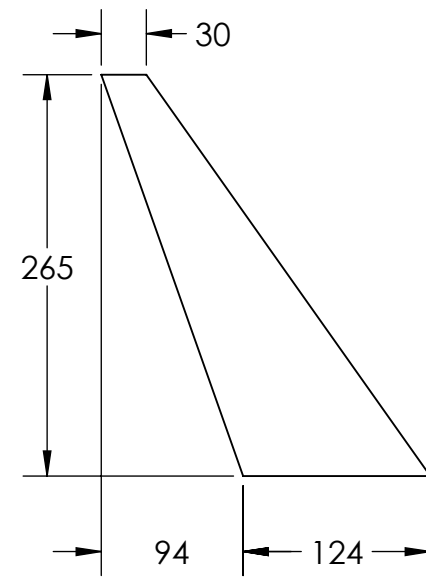
PART / ARTICLE C



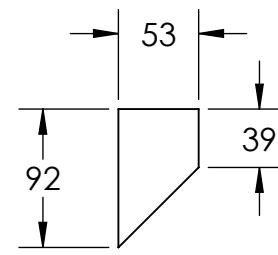
PART / ARTICLE E



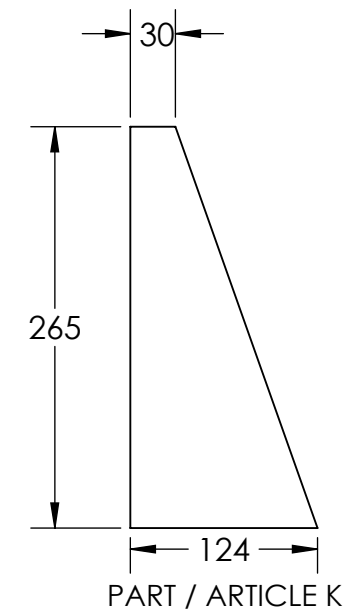
PART / ARTICLE G



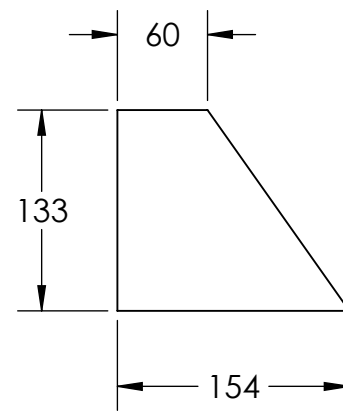
PART / ARTICLE J



PART / ARTICLE H



PART / ARTICLE K



PART / ARTICLE F

DRAFT

BILL OF MATERIALS

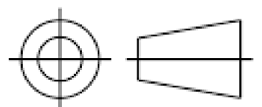
ITEM / ARTICLE	DESCRIPTION	QTY	KG
A	PL 9.53 X 310 X 375	1	7.5
B	PL 6.35 X 120 X 180	2	SEE NOTE / VOIR LA NOTE
C	PL 6.35 X 128 X 248	2	3.2
D	PL 6.35 X 60 X 248	2	1.5
E	PL 6.35 X 133 X 248	1	1.6
F	PL 6.35 X 133 X 154	1	1.0
G	PL 6.35 X 85 X 142	1	0.6
H	PL 6.35 X 53 X 92	2	0.5
J	PL 6.35 X 101 X 342	1	1.7
K	PL 6.35 X 124 X 265	1	1.6
L	PL 9.53 X 50 X 310	1	1.2
TOTAL ESTIMATED WEIGHT / POIDS TOTAL ESTIMÉ:			15.9

NOTE:
 -BEVELS ON ITEMS B AND C WILL BE OPPOSITE SIDES FOR EITHER SIDE OF ASSEMBLY
 -TWO ITEM B CAN BE CUT IN HOLE DROP FROM ITEM A
 -ITEMS WITHOUT A SKETCH ARE SQUARE /RECTANGULAR
 NOTE:
 -LES CHANFREINS DES ÉLÉMENTS B ET C SERONT LES CÔTÉS OPPOSÉS POUR CHAQUE CÔTÉ DE L'ASSEMBLAGE
 -LES DEUX ITEM B PEUVENT ÊTRES COUPÉS DANS LA PARTIE RESTANTE DE L'ARTICLE A
 -LES ÉLÉMENTS SANS CROQUIS SONT CARRÉS / RECTANGULAIRE

ALL DIMENSIONS IN MILLIMETERS/TOUTES LES DIMENSIONS SONT EN MILLIMÈTRES



TITLE: SCNC 2023 - SECONDARY DAY 1 OCMT 2023 - SECONDAIRE JOUR 1 MINT / TIRELIRE - PARTS / LES PIÈCES		SHEET # NO. DE PAGE: 3 OF/DE 3	SIZE/TAILLE: B
DWG. NO.: SCNC2023-SP-1	REV.: 0	SCALE ÉCHELLE: NTS	DESIGN BY: T. PUNTON DRAWN BY: J. HYDE DATE: 2022-06-05



4

3

2

1