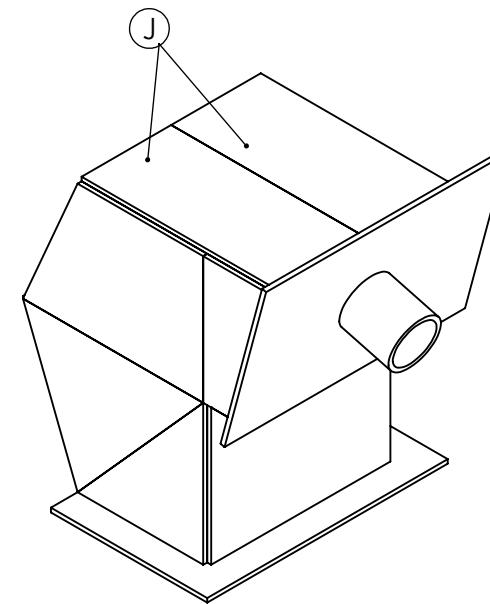
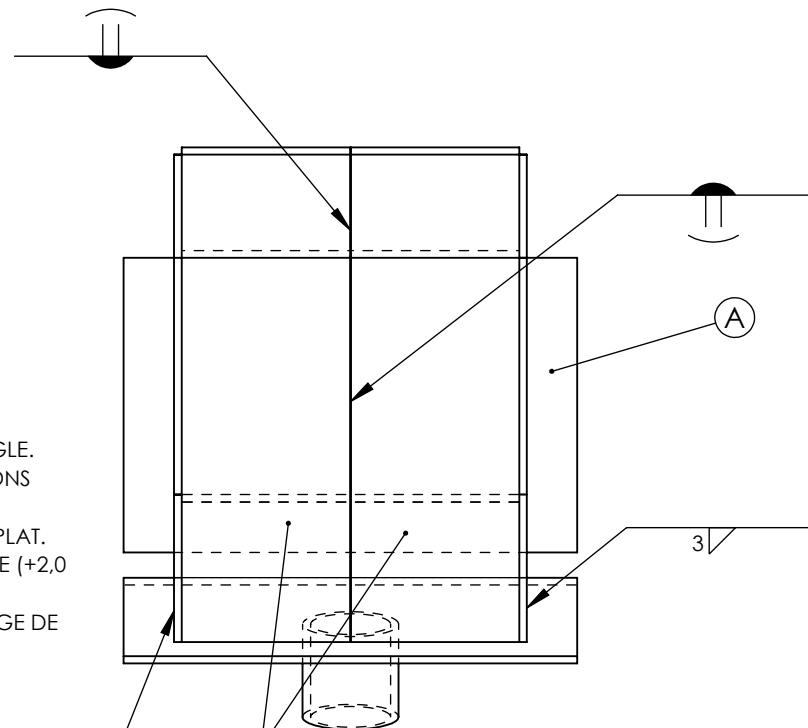


INSTRUCTIONS TO COMPETITORS

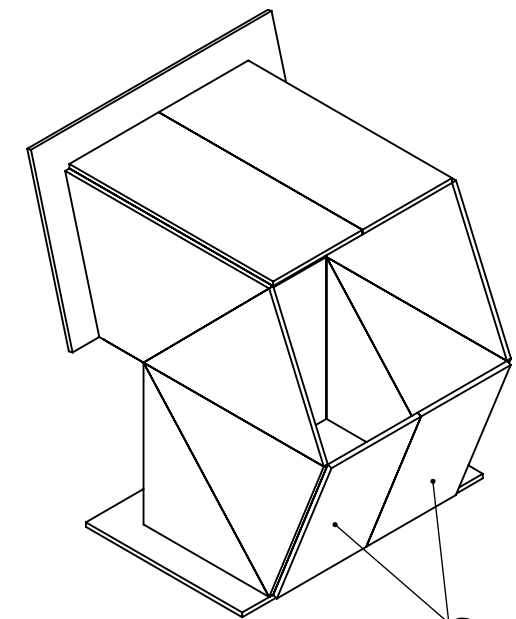
1. WELDING PROCESS: ISO 4063-141 (AWS A3.0 GTAW)
2. WELDING POSITIONS: ALL EXCEPT VERTICAL DOWN.
3. NO GAPS ARE ALLOWED ON THE BUTT & CORNER WELD JOINTS.
4. ALL BUTT & CORNER WELDS SHALL HAVE FULL PENETRATIONS.
5. ALL THE WELDING TO BE CARRIED OUT WITH BASE PLATE "A" IN THE FLAT POSITION.
6. ALL LEG SIZES OF FILLET WELDS: 4.0 mm WITH TOLERANCE (+2.0 mm/-0.0 mm)..
7. ALL WELDS SHALL BE COMPLETED IN ONLY ONE PASS WITH FILLER ROD ADDED.

INSTRUCTIONS AUX CONCURRENTS

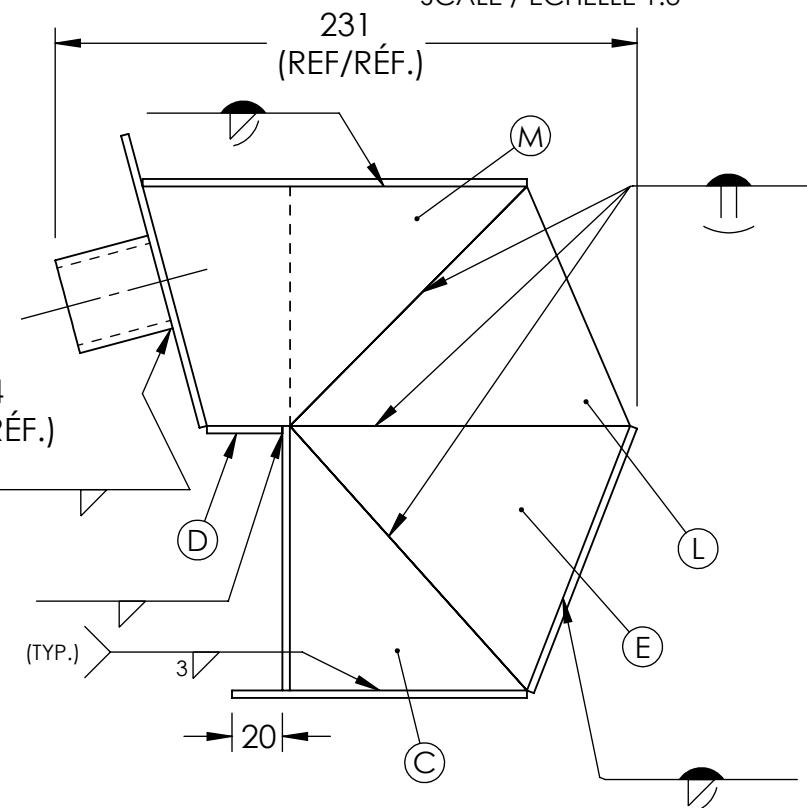
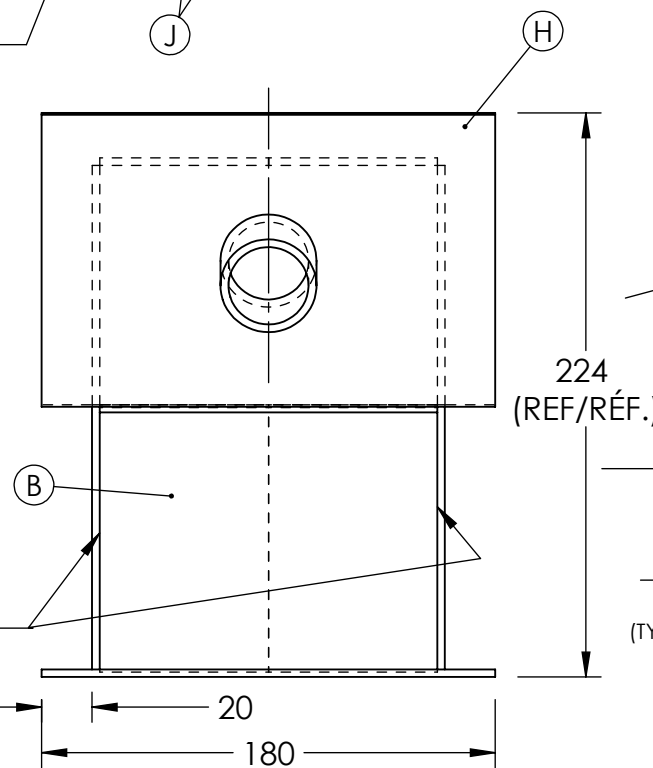
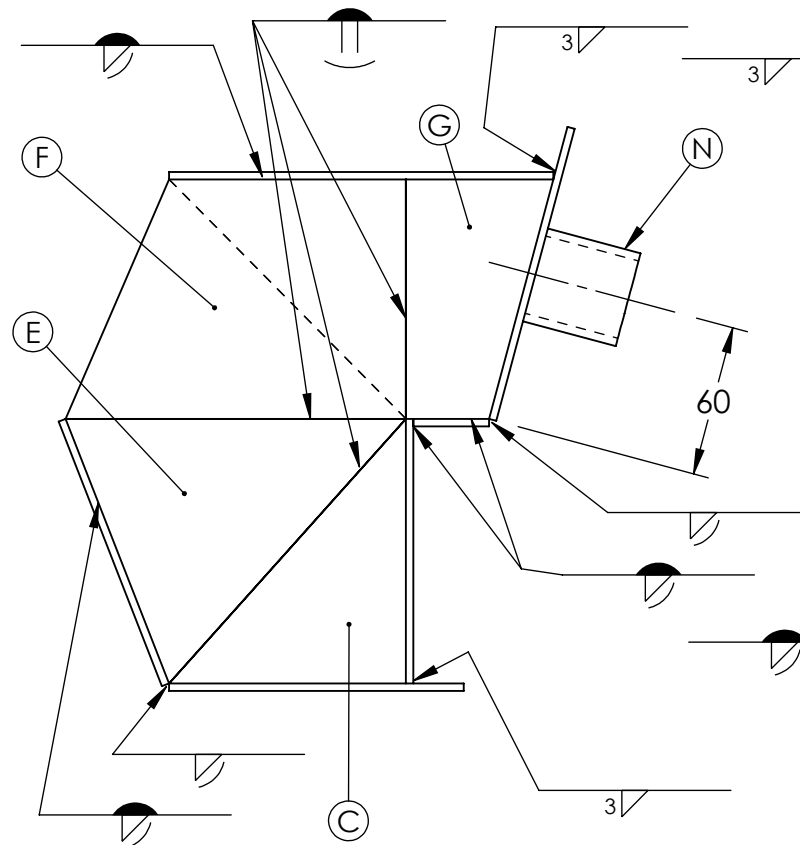
1. PROCÉDÉ DE SOUDAGE : ISO 4063-141 (AWS A3.0 GTAW)
2. POSITIONS DE SOUDAGE : TOUTES SAUF VERTICALES BAS.
3. AUCUN ÉCART N'EST AUTORISÉ SUR LES JOINTS DE SOUDURE BOUT À BOUT ET D'ANGLE.
4. TOUTES LES SOUDURES BOUT À BOUT ET EN ANGLE DOIVENT AVOIR DES PÉNÉTRATIONS COMPLÈTES.
5. TOUTES LES SOUDURES DOIVENT ÊTRE EFFECTUÉES AVEC LA PLAQUE DE BASE "A" À PLAT.
6. TOUTES LES TAILLES DE JAMBES DES SOUDURES D'ANGLE : 4.0 mm AVEC TOLÉRANCE (+2.0 mm/-0.0 mm)..
7. TOUTES LES SOUDURES DOIVENT ÊTRE EFFECTUÉES EN UN SEUL PASSAGE AVEC LA TIGE DE REMPLISSAGE AJOUTÉE.



ISOMETRIC VIEW A /
VUE ISOMÉTRIQUE A
SCALE / ÉCHELLE 1:3



ISOMETRIC VIEW B /
VUE ISOMÉTRIQUE B
SCALE / ÉCHELLE 1:3



ITEM	QTY / QTÉ	T / ÉP.	W / LARGEUR	L / LONGUEUR	WT / POIDS TOTAL (kg)
A	1	3	117	180	0.17
B	1	3	105	134	0.11
C	2	3	94	105	0.16
D	1	3	30	134	0.03
E	2	3	105	135	0.23
F	1	3	95	135	0.10
G	1	3	59	95	0.05
H	1	3	120	180	0.17
J	2	3	67	153	0.16
K	2	3	67	113	0.12
L	1	3	95	135	0.10
M	1	3	95	135	0.10
N	1	HSS / TUBE Ø38x3 x 38			0.04
TOTAL					1.56

ALL DIMENSIONS IN MILLIMETERS/TOUTES LES DIMENSIONS SONT EN MILLIMÈTRES



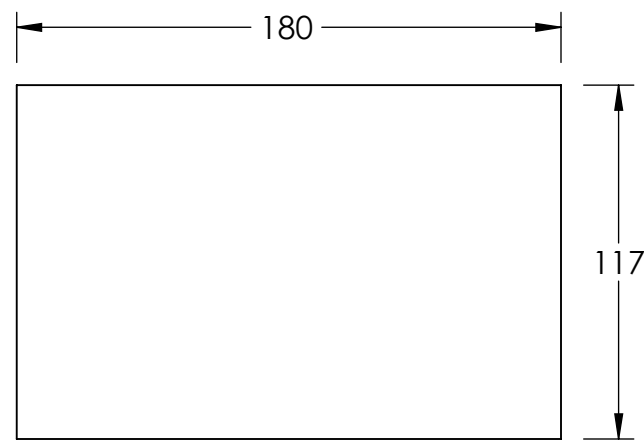
TITLE: SCNC 2024 - POST-SECONDARY DAY 2 OCMT 2024 - POST-SECONDAIRE JOUR 2 WORLD AL./ ALUMINIUM DU MONDE - ASSEMBLY / ASSEMBLAGE			SHEET # NO. DE PAGE: 1 OF 2	SIZE/TAILLE: B
DWG. NO. / DESSIN NO.: SCC2024-PSP-2b	REV.: 3	SCALE ÉCHELLE: 1:3	DESIGN/ CONCEPTION: LIU JINGFENG DRAWN BY / DESSINÉ PAR: J. HYDE DATE: 2023-03-01	

4

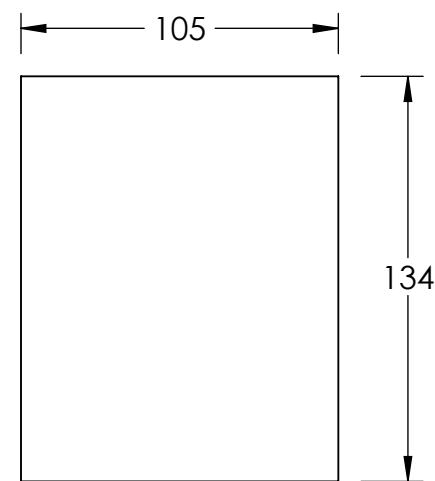
3

2

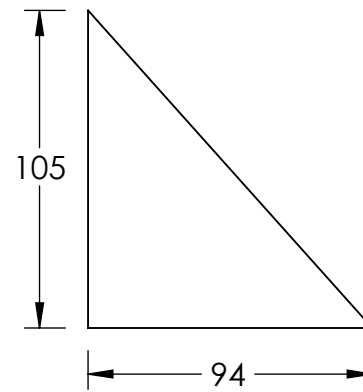
1



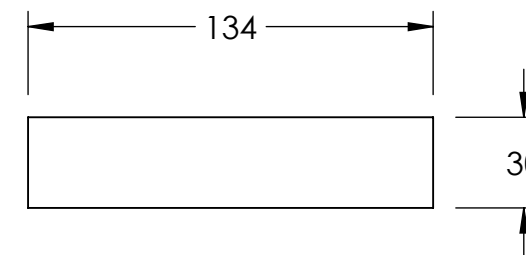
ITEM A



ITEM B

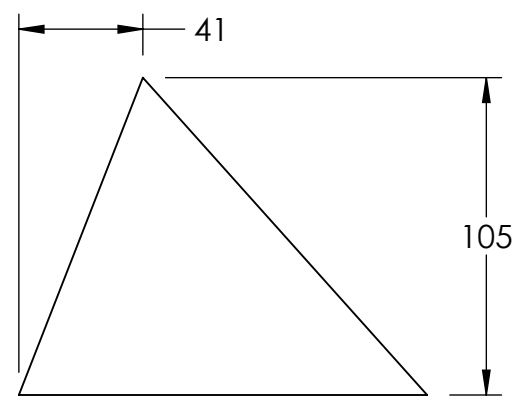


ITEM C

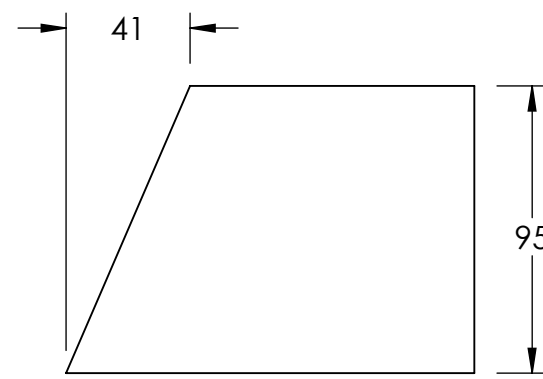


ITEM D

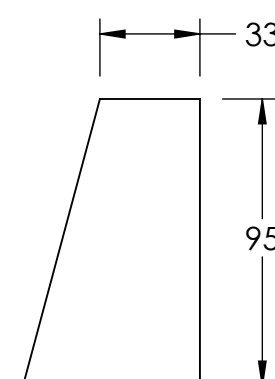
ITEM	QTY / QTÉ	T / ÉP.	W / LARGEUR	L / LONGEUR	WT / POIDS TOTAL (kg)
A	1	3	117	180	0.17
B	1	3	105	134	0.11
C	2	3	94	105	0.16
D	1	3	30	134	0.03
E	2	3	105	135	0.23
F	1	3	95	135	0.10
G	1	3	59	95	0.05
H	1	3	120	180	0.17
J	2	3	67	153	0.16
K	2	3	67	113	0.12
L	1	3	95	135	0.10
M	1	3	95	135	0.10
N	1	HSS / TUBE Ø38x3 x 38			0.04
TOTAL					1.56



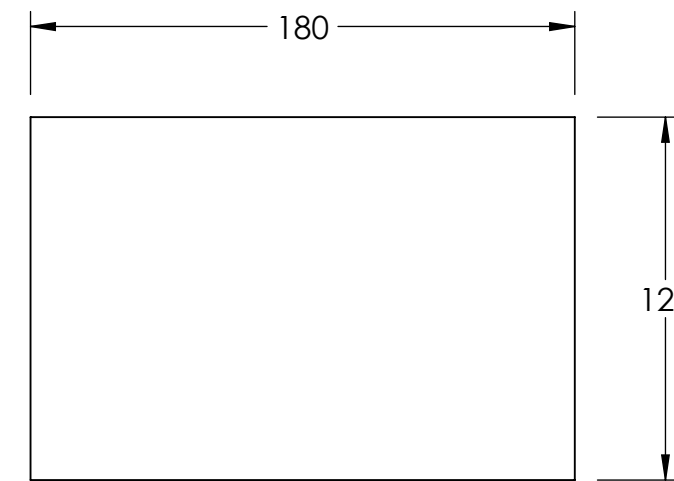
ITEM E



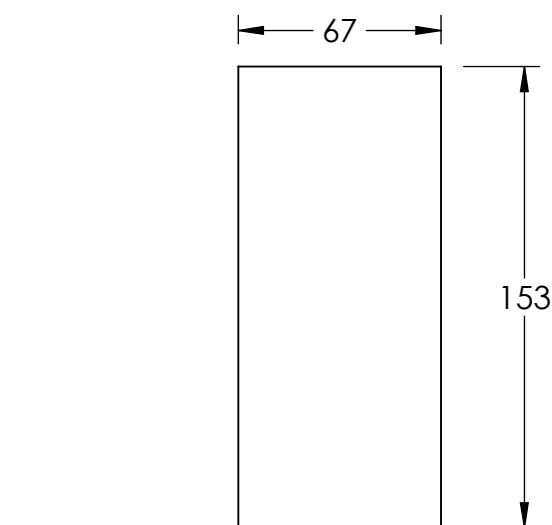
ITEM F



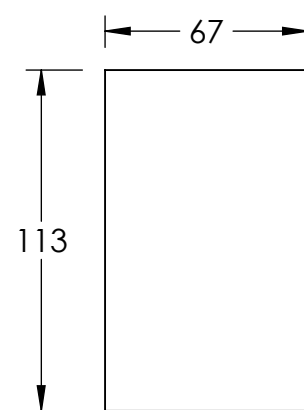
ITEM G



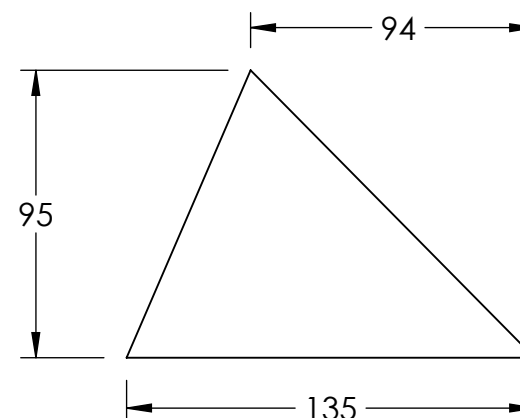
ITEM H



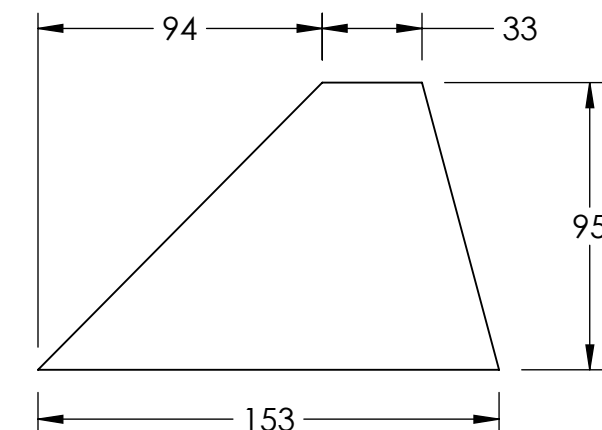
ITEM J



ITEM K



ITEM L

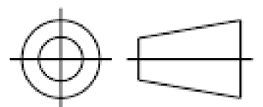


ITEM M

ALL DIMENSIONS IN MILLIMETERS/TOUTES LES DIMENSIONS SONT EN MILLIMÈTRES




SkillsCompétences
Canada
 Québec2024

TITLE: SCNC 2023 - POST-SECONDARY DAY 2 OCMT 2023 - POST-SECONDAIRE JOUR 2 WORLD AL./ ALUMINIUM DU MONDE - PARTS / LES PIÈCES			SHEET # NO. DE PAGE: 2 OF 2	SIZE/TAILLE: B
DWG. NO. / DESSIN NO.: SCC2023-PSP-2b	REV.: 3	SCALE ÉCHELLE: 1:2.5	DESIGN/ CONCEPTION: LIU JINGFENG DRAWN BY / DESSINÉ PAR: J. HYDE DATE: 2023-03-01	

4

3

2

1