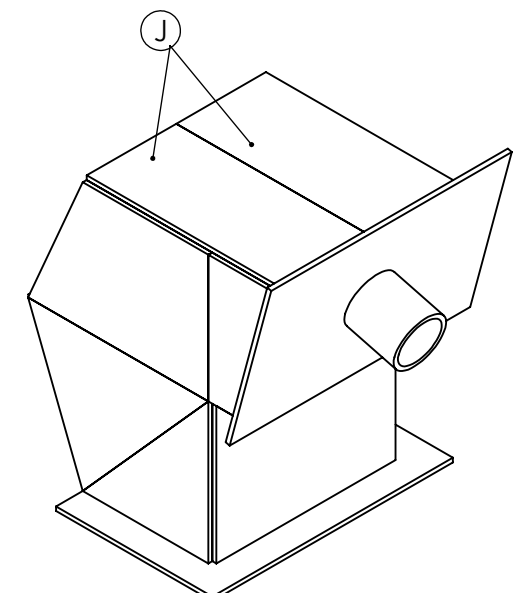
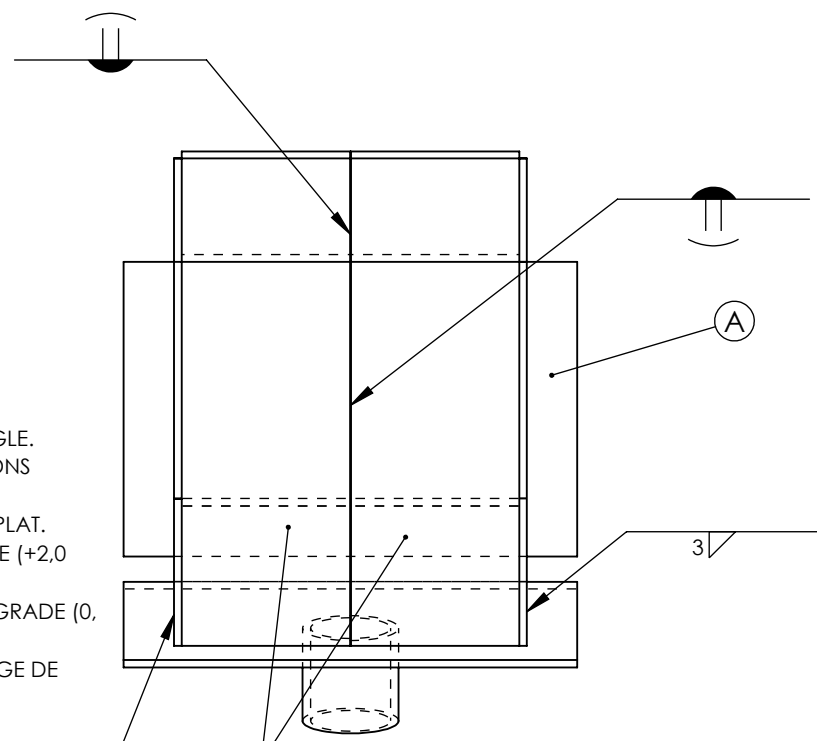


INSTRUCTIONS TO COMPETITORS

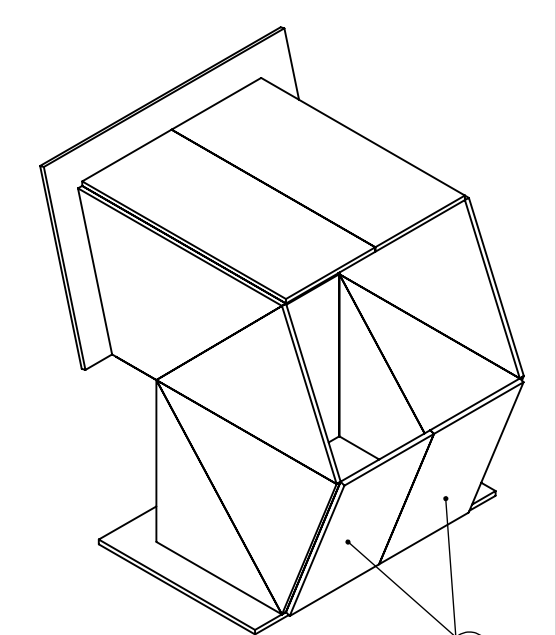
1. WELDING PROCESS: ISO 4063-141 (AWS A3.0 GTAW)
2. WELDING POSITIONS: ALL EXCEPT VERTICAL DOWN.
3. NO GAPS ARE ALLOWED ON THE BUTT & CORNER WELD JOINTS.
4. ALL BUTT & CORNER WELDS SHALL HAVE FULL PENETRATIONS.
5. ALL THE WELDING TO BE CARRIED OUT WITH BASE PLATE "A" IN THE FLAT POSITION.
6. ALL LEG SIZES OF FILLET WELDS: 4.0 mm WITH TOLERANCE (+2.0 mm/-0.0 mm).
7. OUTSIDE CORNER WELD RADII TO BE JUDGEMENT ASSESSED WITH GRADE (0,1,2,3).
8. ALL WELDS SHALL BE COMPLETED IN ONLY ONE PASS WITH FILLER ROD ADDED.

INSTRUCTIONS AUX CONCURRENTS

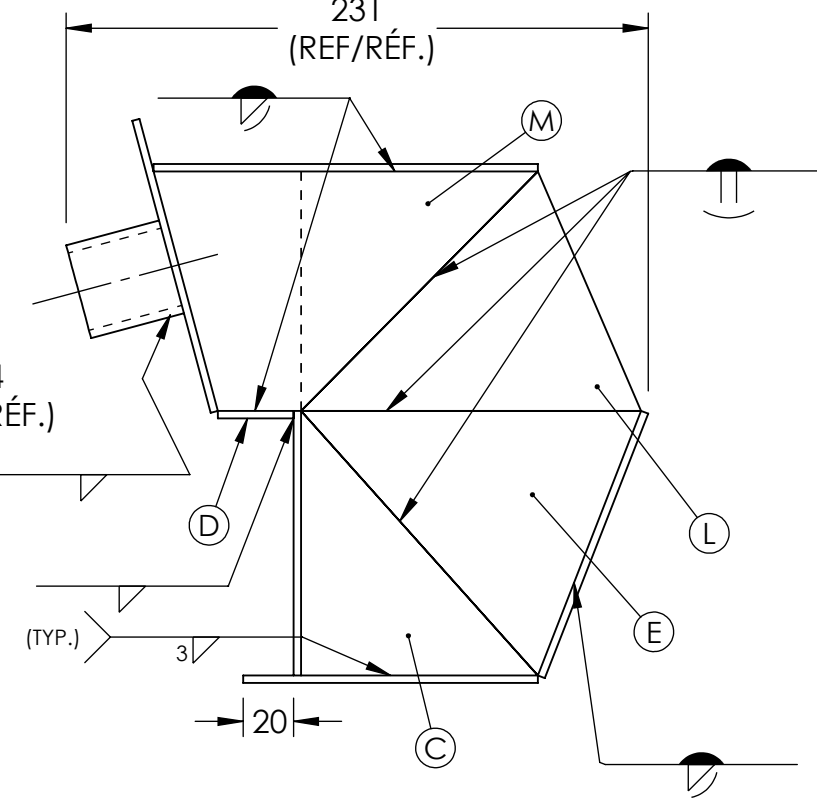
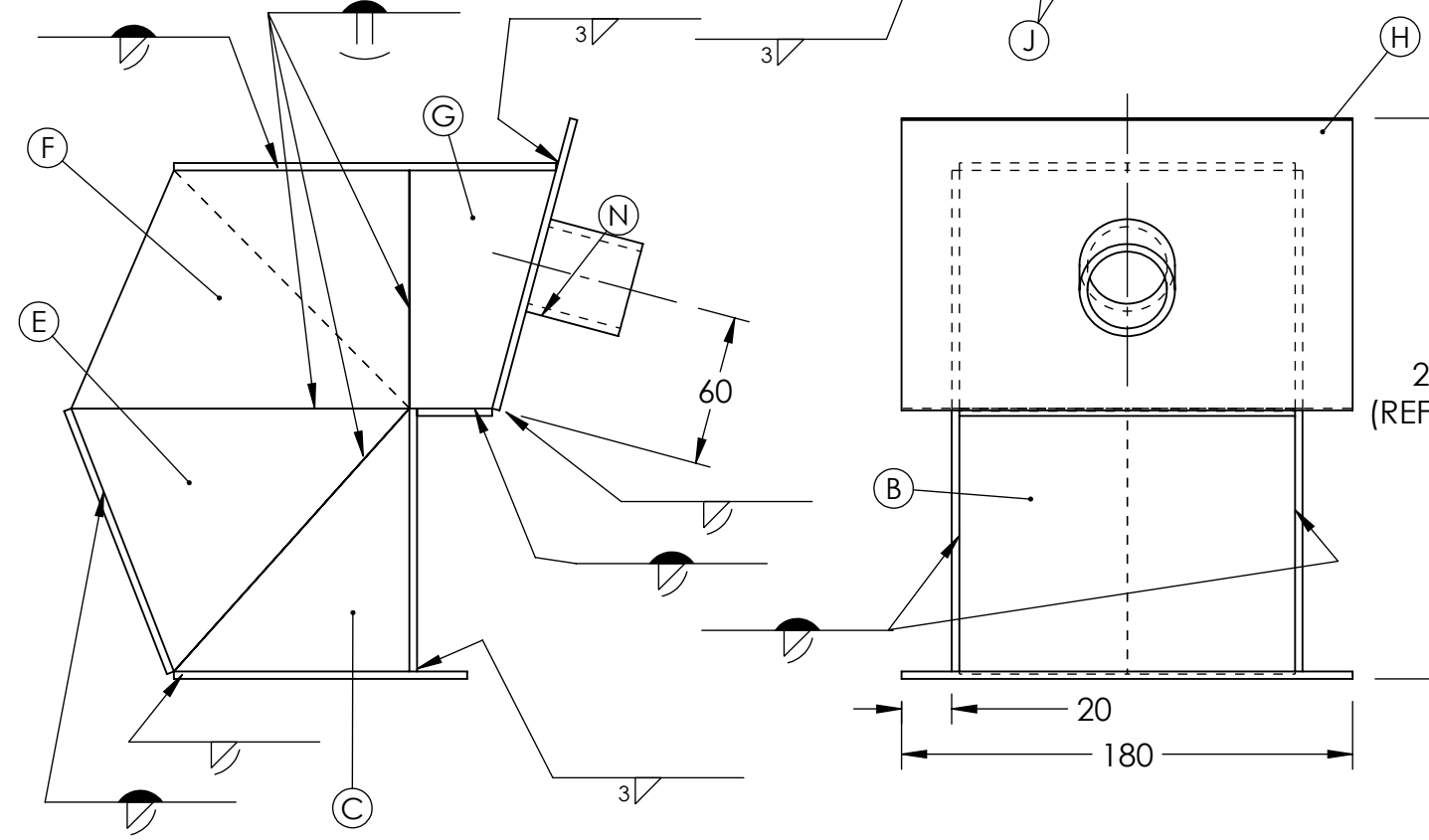
1. PROCÉDÉ DE SOUDAGE : ISO 4063-141 (AWS A3.0 GTAW)
2. POSITIONS DE SOUDAGE : TOUTES SAUF VERTICALES BAS.
3. AUCUN ÉCART N'EST AUTORISÉ SUR LES JOINTS DE SOUDURE BOUT À BOUT ET D'ANGLE.
4. TOUTES LES SOUDURES BOUT À BOUT ET EN ANGLE DOIVENT AVOIR DES PÉNÉTRATIONS COMPLÈTES.
5. TOUTES LES SOUDURES DOIVENT ÊTRE EFFECTUÉES AVEC LA PLAQUE DE BASE "A" À PLAT.
6. TOUTES LES TAILLES DE JAMBES DES SOUDURES D'ANGLE : 4,0 mm AVEC TOLÉRANCE (+2,0 mm/-0,0 mm).
7. RAYONS DE SOUDURE DES COINS EXTÉRIEURS À ÉVALUER AU JUGEMENT AVEC LA GRADE (0, 1,2,3).
8. TOUTES LES SOUDURES DOIVENT ÊTRE EFFECTUÉES EN UN SEUL PASSAGE AVEC LA TIGE DE REMPLISSAGE AJOUTÉE.



ISOMETRIC VIEW A /  
VUE ISOMÉTRIQUE A  
SCALE / ÉCHELLE 1:3



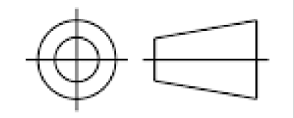
ISOMETRIC VIEW B /  
VUE ISOMÉTRIQUE B  
SCALE / ÉCHELLE 1:3



ITEM	QTY / QTÉ	T / ÉP.	W / LARGEUR	L / LONGEUR	WT / POIDS TOTAL (kg)
A	1	3	117	180	0.17
B	1	3	105	134	0.11
C	2	3	94	105	0.16
D	1	3	30	134	0.03
E	2	3	105	135	0.23
F	1	3	95	135	0.10
G	1	3	59	95	0.05
H	1	3	120	180	0.17
J	2	3	67	153	0.16
K	2	3	67	113	0.12
L	1	3	95	135	0.10
M	1	3	95	135	0.10
N	1	HSS / TUBE Ø38x3 x 38			0.04
TOTAL					1.56

ALL DIMENSIONS IN MILLIMETERS/TOUTES LES DIMENSIONS SONT EN MILLIMÈTRES

<b>TITLE:</b> SCNC 2024 -POST-SECONDARY DAY 2 ALUMINUM OCMT 2024 - POST-SECONDAIRE JOUR 2 ALUMINIUM		<b>SHEET #</b> <b>NO. DE PAGE:</b> 1 OF 2	<b>SIZE/TAILLE:</b> B
<b>DWG. NO.:</b> SCNC24-PS2b	<b>REV.:</b> 0	<b>SCALE</b> <b>ÉCHELLE:</b> 1:3	<b>DRAWN BY:</b> J. HYDE <b>DATE:</b> 2023-10-17

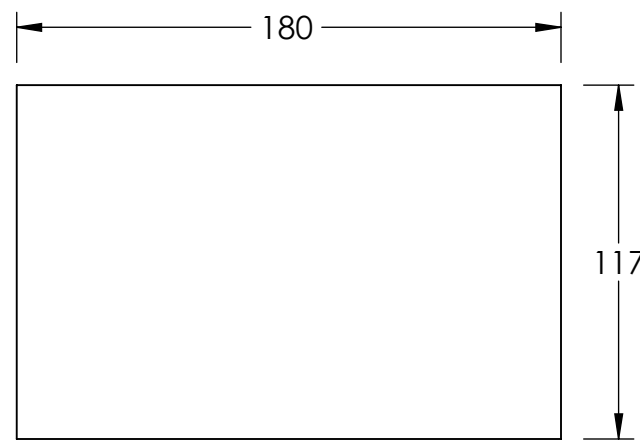


4

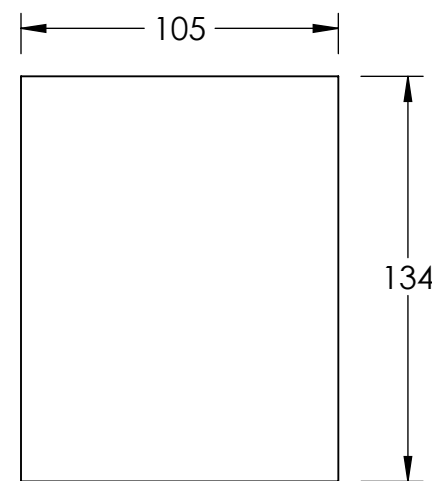
3

2

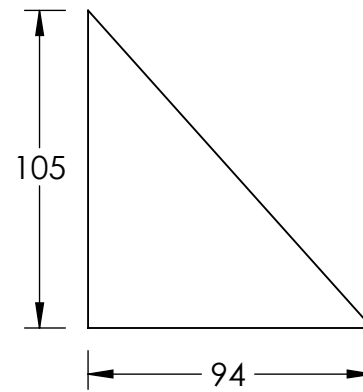
1



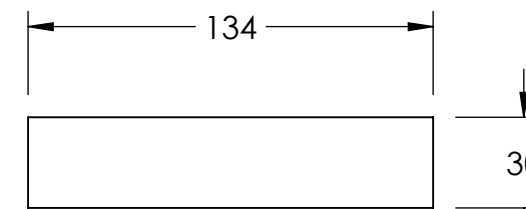
ITEM A



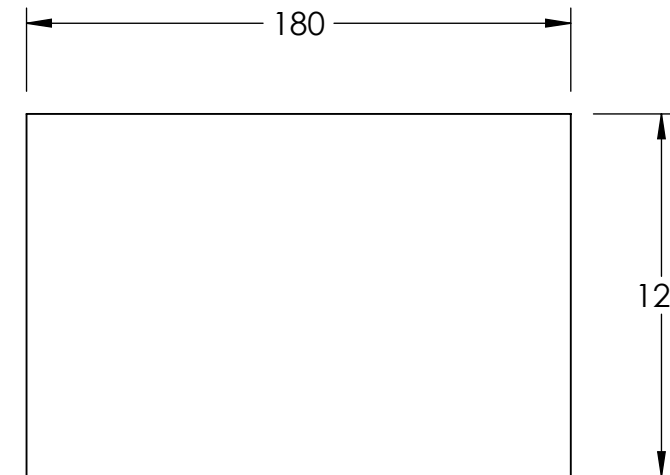
ITEM B



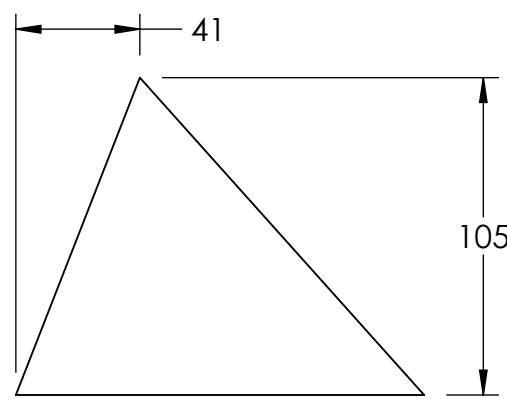
ITEM C



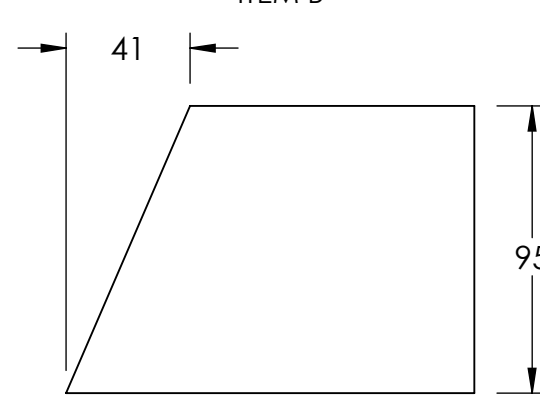
ITEM D



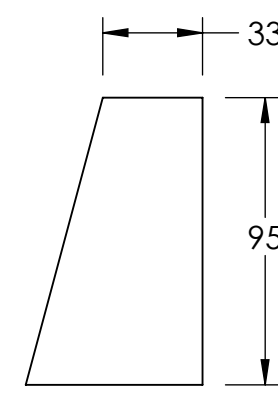
ITEM H



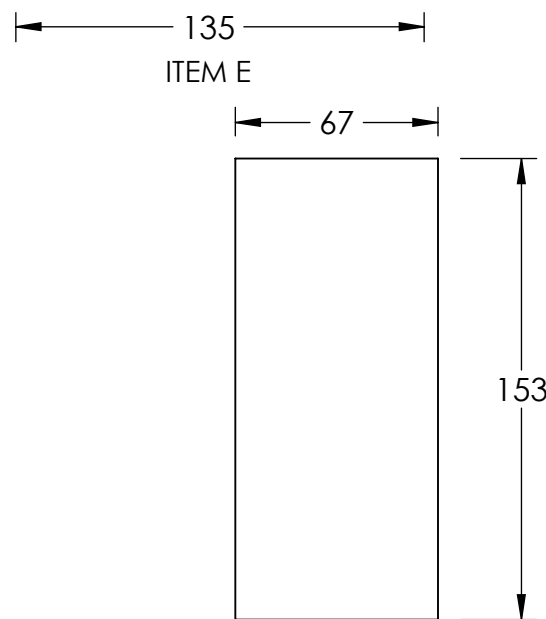
ITEM E



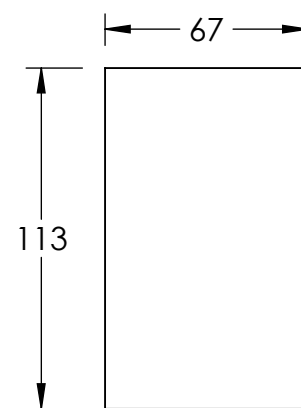
ITEM F



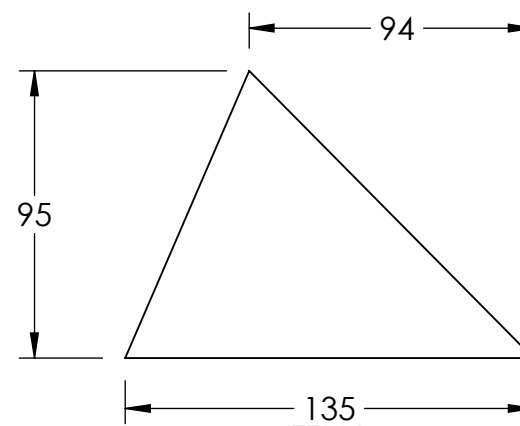
ITEM G



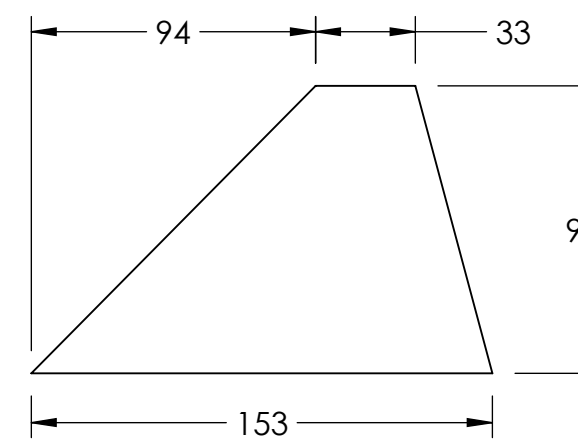
ITEM J



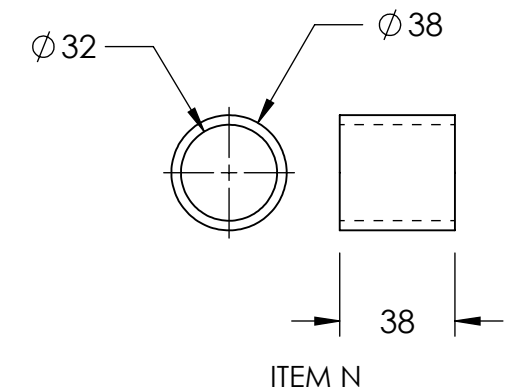
ITEM K



ITEM L



ITEM M



ITEM N

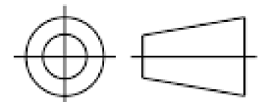
ITEM	QTY / QTÉ	T / ÉP.	W / LARGEUR	L / LONGEUR	WT / POIDS TOTAL (kg)
A	1	3	117	180	0.17
B	1	3	105	134	0.11
C	2	3	94	105	0.16
D	1	3	30	134	0.03
E	2	3	105	135	0.23
F	1	3	95	135	0.10
G	1	3	59	95	0.05
H	1	3	120	180	0.17
J	2	3	67	153	0.16
K	2	3	67	113	0.12
L	1	3	95	135	0.10
M	1	3	95	135	0.10
N	1	HSS / TUBE Ø38ODx3Wx38			0.04
TOTAL					1.56

ALL DIMENSIONS IN MILLIMETERS/TOUTES LES DIMENSIONS SONT EN MILLIMÈTRES



**SkillsCompétences**  
Canada  
Québec2024

<b>TITLE:</b> SCNC 2024 -POST-SECONDARY DAY 2 ALUMINUM OCMT 2024 - POST-SECONDAIRE JOUR 2 ALUMINIUM		<b>SHEET #</b> <b>NO. DE PAGE:</b> 2 OF 2	<b>SIZE/TAILLE:</b> B
<b>DWG. NO.:</b> SCNC24-PS2b	<b>REV.:</b> 0	<b>SCALE</b> <b>ÉCHELLE:</b> 1:2.5	<b>DRAWN BY:</b> J. HYDE <b>DATE:</b> 2023-10-17



4

3

2

1

