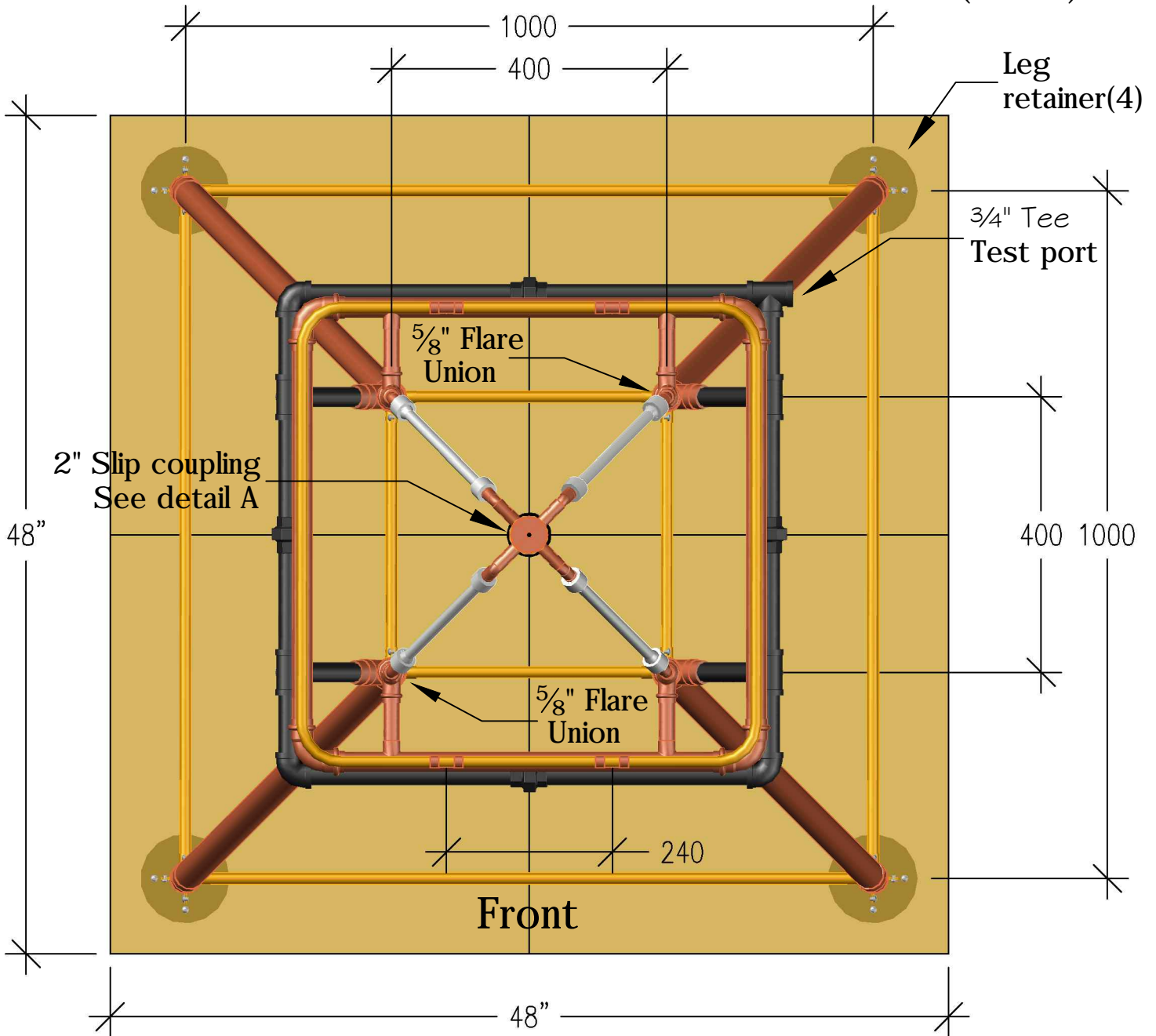


Plan view

18TH SKILLS CANADA NATIONAL COMPETITION EDMONTON (2012)

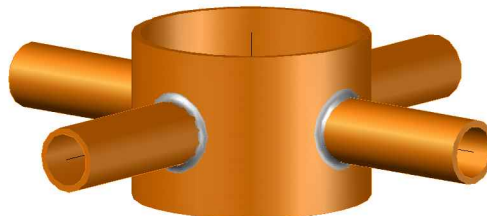


Notes

- Front and back views are identical and have same dimensions.
- Left and right side views are identical and have same dimensions.

Detail A

2" Slip coupling with 4 1/2" pipes brased on.
(Provided by the organization)
This coupling slips on the 2" pipe
to center it. (No 2" soldered joint)



Test project Plumbing (15)

No scale

Drawing by : J. Cormier
March 2012