



TEST PROJECT
PROJET D'ÉPREUVE

WELDING SOUDAGE

SECONDARY
NIVEAU SECONDAIRE

CONTINUOUS LEARNING



FORMATION CONTINUE

DIGITAL



COMPÉTENCES NUMÉRIQUES

DOCUMENT USE



UTILISATION DE DOCUMENTS

NUMERACY



CALCUL

ORAL COMMUNICATION



COMMUNICATION ORALE

READING TEXT



LECTURE

WORKING WITH OTHERS



TRAVAIL D'ÉQUIPE

WRITING



RÉDACTION

THINKING

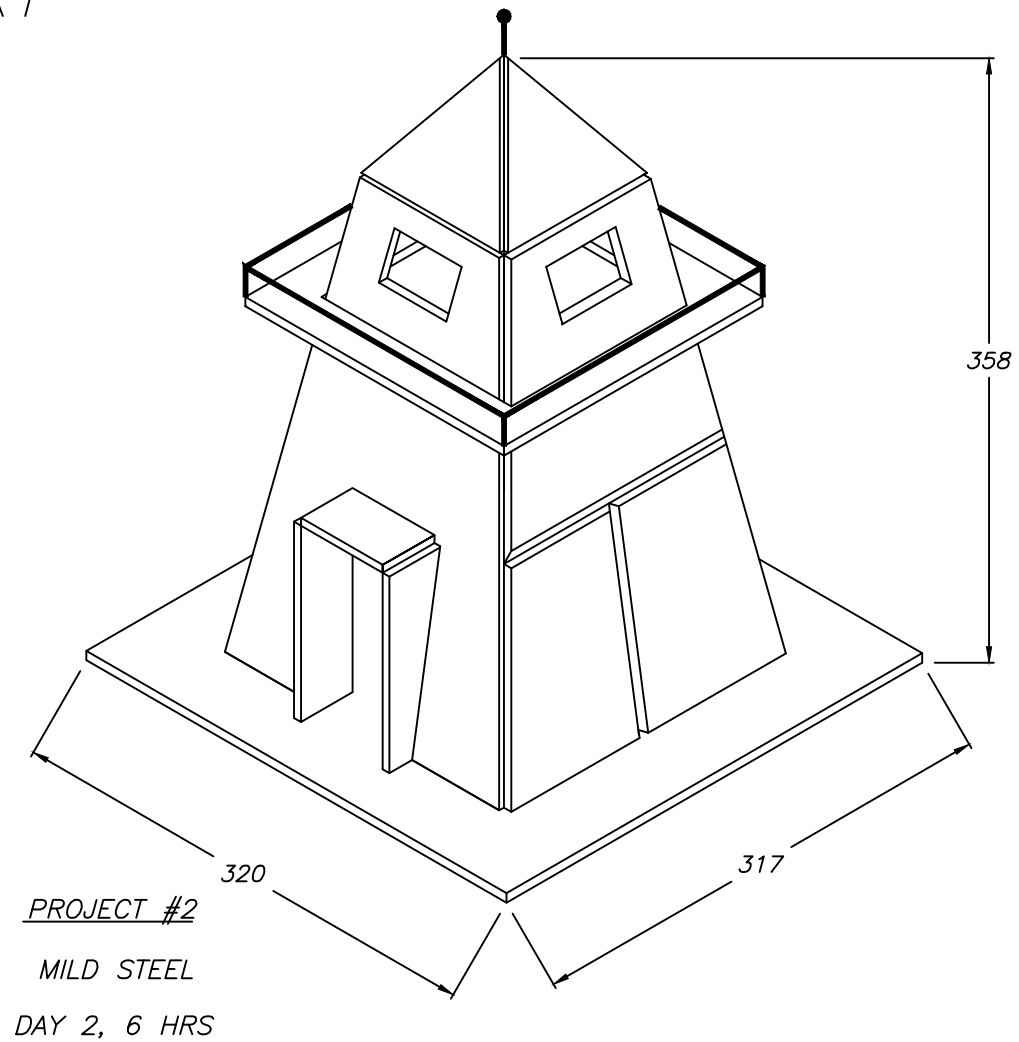
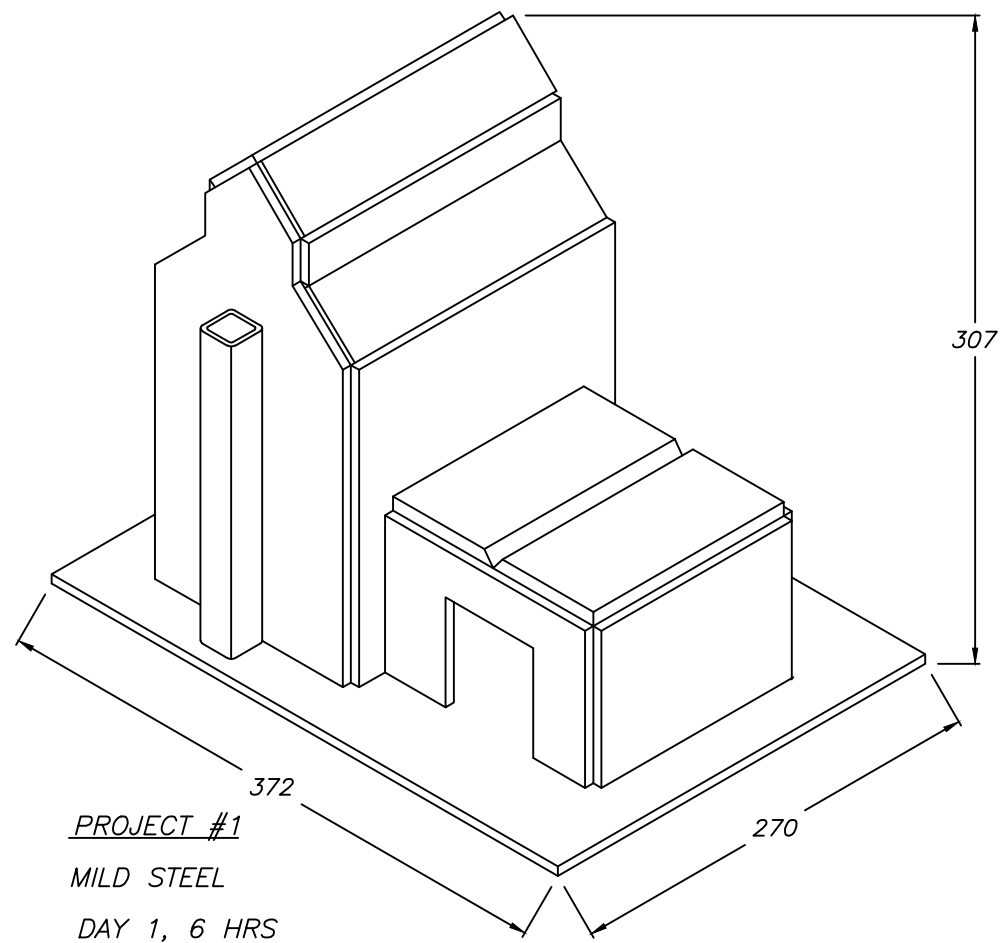


CAPACITÉ DE RAISONNEMENT

CANADIAN SKILLS COMPETITION 2016

WELDING PROJECTS

SECONDARY



THE NATIONAL TECHNICAL COMMITTEE RESERVES THE
RIGHT TO MAKE CHANGES TO THE PROJECTS

ALL DIMENSIONS IN MILLIMETRES

DO NOT SCALE DRAWING



PART NAME: SKILLS CANADA – SECONDARY

DRAWN BY: John Kroisenbrunner
DATE: 20-10-2015

SCALE:
NONE

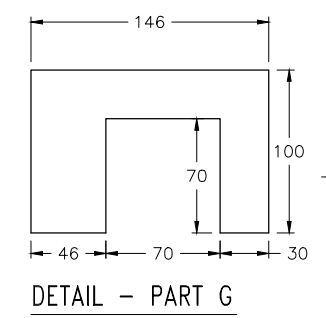
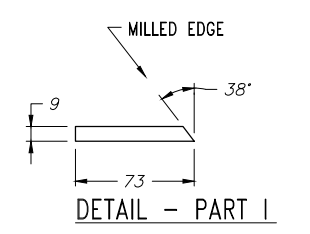
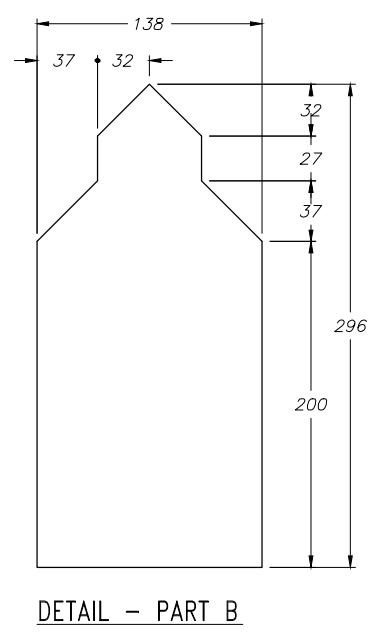
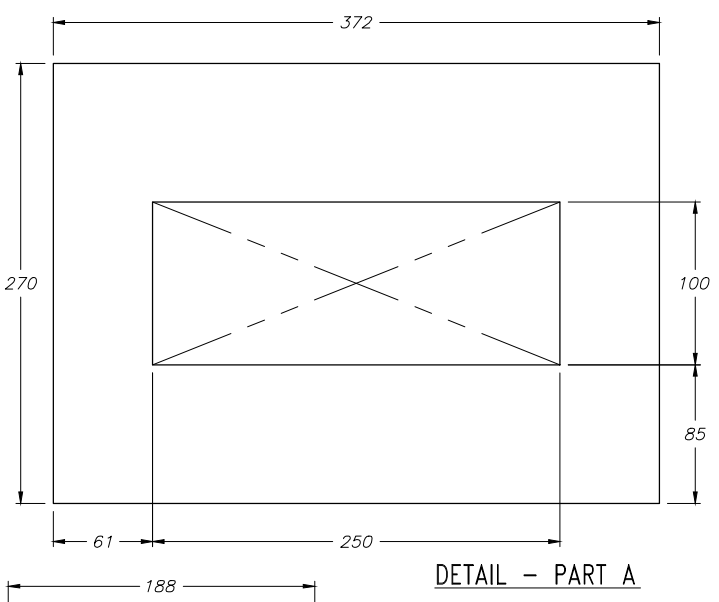
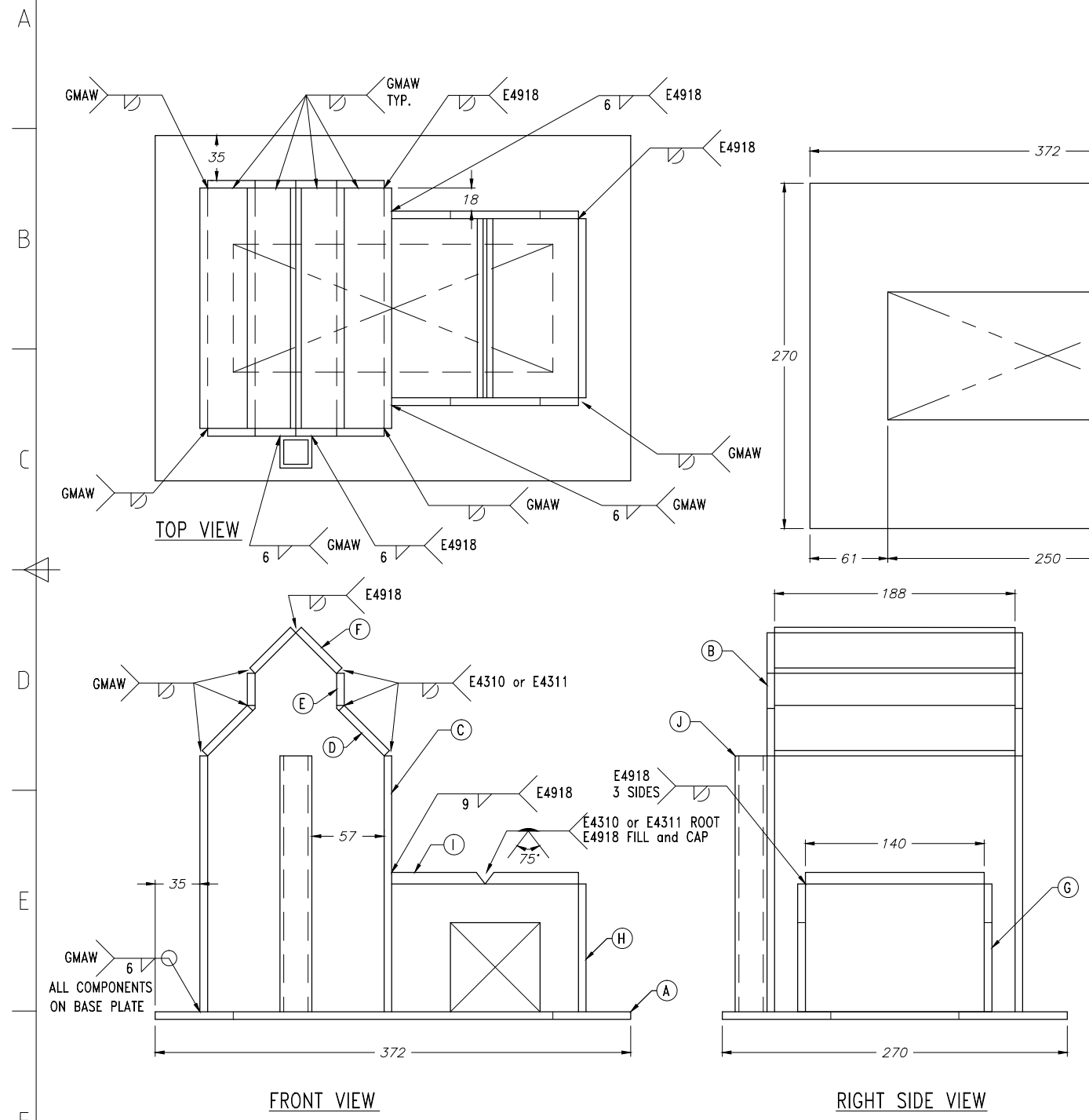
DWG.NO.:
2016 CS-Projects

RevNo	Revision note	Date	Signature	Checked
1	H was 2	Jan. 4, 2013	JK	JK

TIME LIMIT: 6 HOURS

NOTE:

- ALL PARTS MUST BE TACKED IN PLACE BEFORE ANY WELDING COMMENCES
- PROJECT MUST REMAIN FLAT ON ITS BASEPLATE DURING WELDING
- ALL VERTICAL WELDING IS TO BE VERTICAL UP
- ROOT OPENING AND ROOT FACE YOUR CHOICE
- ALL SMAW WELDS E4918 EXCEPT AS NOTED



ALL DIMENSIONS IN MILLIMETRES
ALL MATERIAL MILD STEEL

Item	Quantity	Description	Notes
J	1	HSS 25 X 25 X 3 WALL X 200	
I	2	PLATE 9 x 73 x 140	MILL ONE SIDE EACH
H	1	PLATE 6 x 100 x 140	
G	2	PLATE 6 x 100 x 146	SHAPE
F	2	PLATE 6 x 45 x 188	
E	2	PLATE 6 x 25 x 188	
D	2	PLATE 6 x 50 x 188	
C	2	PLATE 6 x 188 x 200	
B	2	PLATE 6 x 138 x 296	SHAPE
A	1	PLATE 6 x 270 x 372	SHAPE

Designed by Myron Becker	Checked by Robbie Duncan	Drawn by John Kroisenbrunner	Date Oct. 20 2013	Scale 1:4
-----------------------------	-----------------------------	---------------------------------	----------------------	--------------

DO NOT SCALE DRAWING



SKILLS CANADA

SECONDARY PROJECT #1

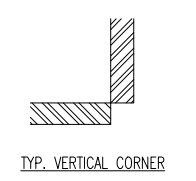
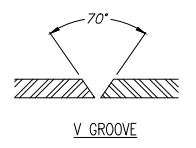
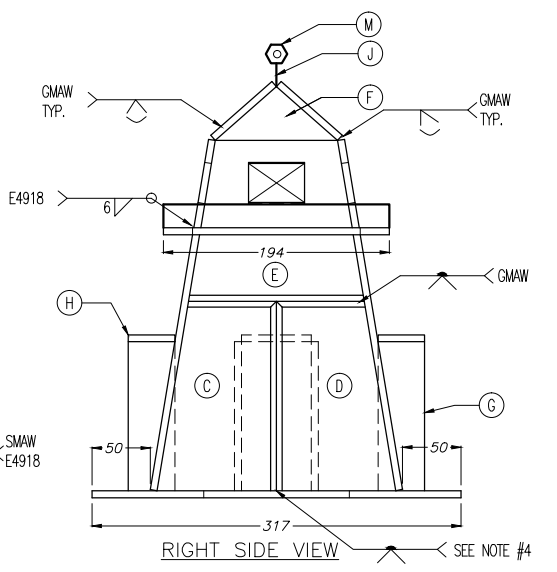
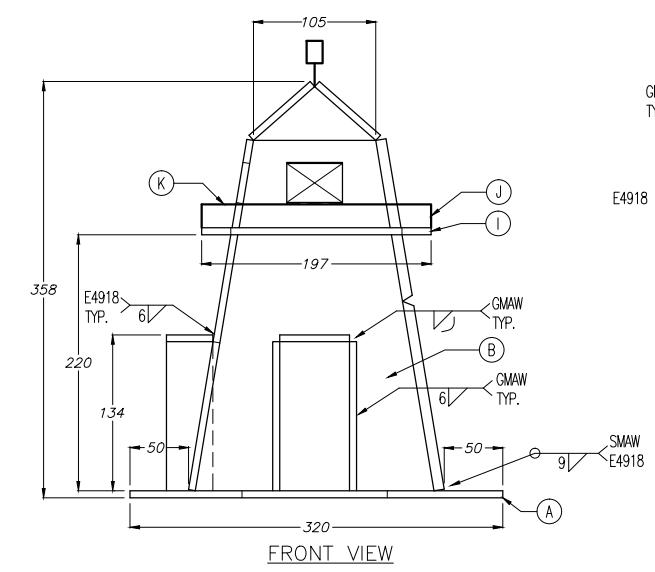
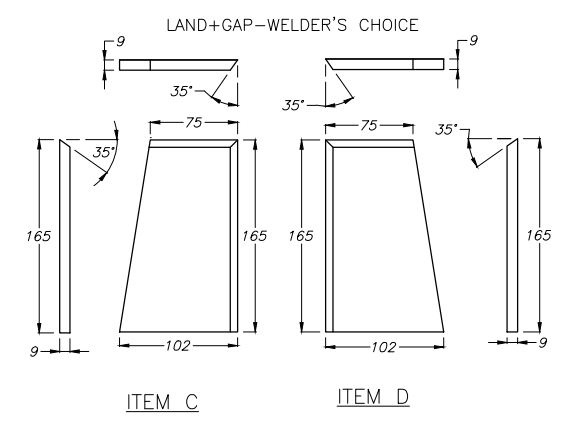
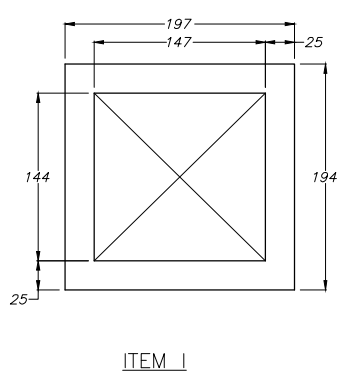
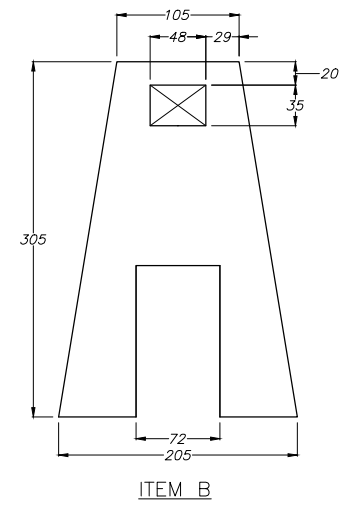
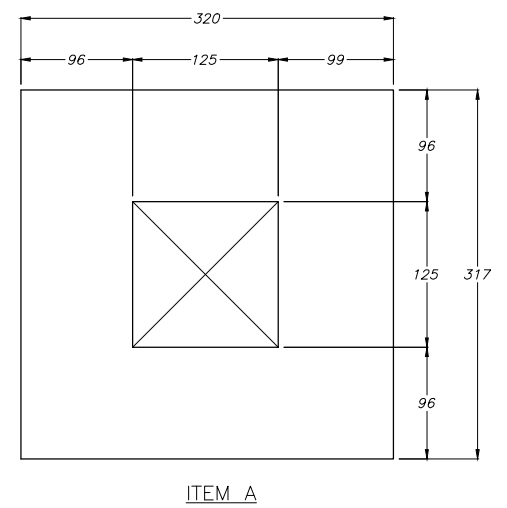
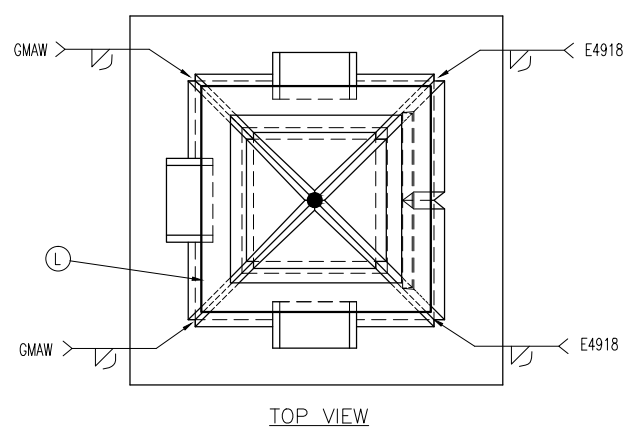
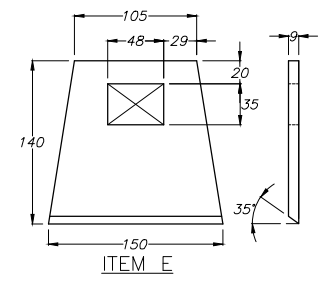
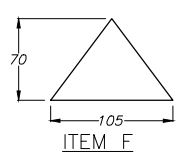
2016 - CS - 1a

Revision 1
Sheet 1/1

TIME LIMIT: 6 HOURS

RevNo	Revision note	Date	Signature	Checked
1	G was 3	Jan. 4, 2013	JK	JK

- NOTES:
- 1) TACK WELD ALL COMPONENTS TOGETHER EXCEPT J, K, L AND M BEFORE WELDING
 - 2) ALL VERTICAL WELDING PROGRESSION VERTICAL UP
 - 3) PROJECT MUST REMAIN FLAT ON ITS BASEPLATE DURING WELDING
 - 4) V-GROOVE, ROOT-E4310/E4311, FILL+CAP-E4918, LAND+GAP-WELDER'S CHOICE
 - 5) ITEMS J, K, L, M ARE TACKED ONLY AFTER ALL WELDING IS COMPLETE



ALL MATERIAL MILD STEEL
ALL DIMENSIONS IN MILLIMETRES

Item	Quantity	Description	Notes
M	1	HEX NUT X 9MM	
L	2	ROD, 3Ø X 188	
K	2	ROD, 3Ø X 191	
J	5	ROD, 3Ø X 20	
I	1	PLATE 6 x 194 x 197	SHAPE
H	3	PLATE 6 x 40 x 60	
G	6	PLATE 6 x 40 x 128	
F	4	PLATE 6 x 70 x 105	SHAPE
E	1	PLATE 9 x 140 x 150	SHAPE, MILLED
D	1	PLATE 9 x 102 x 165	SHAPE, MILLED
C	1	PLATE 9 x 102 x 165	SHAPE, MILLED
B	3	PLATE 6 x 205 x 305	SHAPE
A	1	PLATE 6 x 317 x 320	SHAPE

Designed by	Checked by	Drawn by	Date	Scale
Myron Becker	Robbie Duncan	John Kroisenbrunner	Oct. 20, 2015	1:5

DO NOT SCALE DRAWING



SKILLS CANADA

SECONDARY PROJECT #2

2016-CS-2a

Revision 1
Sheet 1/1