



MAKEUP DESIGN  
ÉPREUVE MAQUILLAGE

# AESTHETICS ESTHÉTIQUE

POST-SECONDARY  
NIVEAU POSTSECONDAIRE

CONTINUOUS LEARNING



FORMATION CONTINUE

DIGITAL



COMPÉTENCES NUMÉRIQUES

DOCUMENT USE



UTILISATION DE DOCUMENTS

NUMERACY



CALCUL

ORAL COMMUNICATION



COMMUNICATION ORALE

READING TEXT



LECTURE

WORKING WITH OTHERS



TRAVAIL D'ÉQUIPE

WRITING



RÉDACTION

THINKING



CAPACITÉ DE RAISONNEMENT



**STEP 1 - Shape and sculpt eyebrows with Sheriff Professional's brow powder and brow brush 20 L- angled**



**Step 2 - Apply primetime eye & lip primer (primer) all over eyelid to the brow bone using 16 Detail concealer brush**



**STEP 3 - Apply 207 Whisper eyeshadow only on the brow bone and inner corner of the eye. 13- eyeshadow brush (base eye-shadow brush)**



Step 4 – Apply 267 Faith eyeshadow in the crease with fluffy crease brush and 335 Pewter eyeshadow on the inner lid



Step 5 - Focusing primary in the inner crease, add 281 Savanna eyeshadow. Once 281 Savanna is well blended, go over with 406 Dirty love. Use small blending brush for more precision in crease.



406 Dirty Love



Step 6 – Apply 207 Whisper eyeshadow colour on the lid and inner eye area. This helps to harmonize all colours together. Then apply jet black gel liner on the lash line with a precision brush.



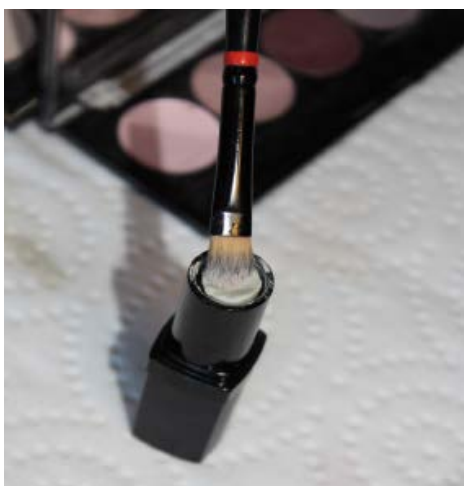
207 Whisper



Eyeshadow should look like this.  
\*\*Remember less is more when using the Sheriff line. Having quality brushes also contributes to a flawless well blended eye. Also, another contributing factor in obtaining a well achieved eyeshadow is to build both eyes as you go.



Step 7 - Remove any fall off the face with a make-up wipe. Apply Camera ready primer all over the face. Use foundation or concealer brush to apply.



Step 8 and 9 - Apply colour corrector if necessary on problematic areas. After you have applied corrector, apply flesh colour concealer to the face (Under the eye or any blemishes). When applying: corrector, concealer, and foundation apply products in a X-motion. This will help prevent streaking. Use concealer brush.



Step 10 - Apply HD Foundation using a flat foundation brush.



Step 11– Apply translucent powder all over the face with powder brush.



Sheriff Powder



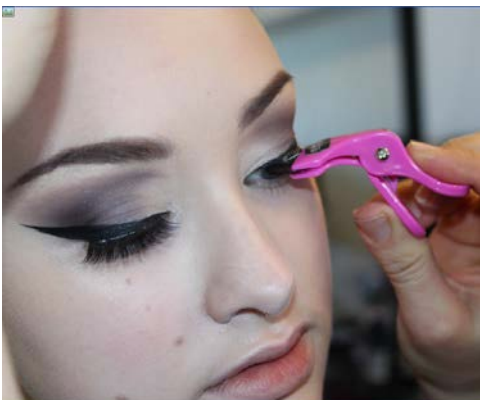
Step 12 - Apply Lash wear black mascara.



Step 13 – Start winging the eye! Use Jet black eyeliner starting from the bottom lash line and extending the line as high as the outer crease area. Only start with the shells and build both eyes as you go.



Fill in the shells.



Step 14 – Apply full band false eyelashes with duo glue. Implements like Sheriff 's lash applicator makes eyelash application easy.



Step 15 – Apply Sheriff Professional black Onyx to below/under the waterline. After go in with a smudging brush and begin to smudge liner out.



Step 16 – After applying black liner and smudging the liner go back under the eye with 281 Savanna Note: Colours will look different on different skin tones.

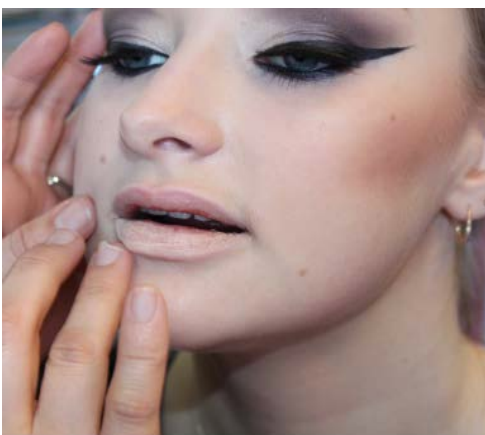


Step 17– Start contouring! Apply contour using Sheriff Professional N95 Contour concealer stick or with contour brush.



Step 18 - Apply Sheriff Professionals Bare skin blush on cheeks using an angled blush brush. \*\* Fun fact - Go over the blush with Sheriff Professional's translucent finishing powder. This will make the blush appear to look more like it's coming from within, rather than it sitting on top of the skin.

Step 19 - Apply Primetime (eye and lip primer) on areas you'd like to highlight and accentuate. Sheriff's primer is 3 in 1 - how great! Use small concealer brush for flawless application. \*Tip – powdering over the face after highlighting will guarantee products are well blended.

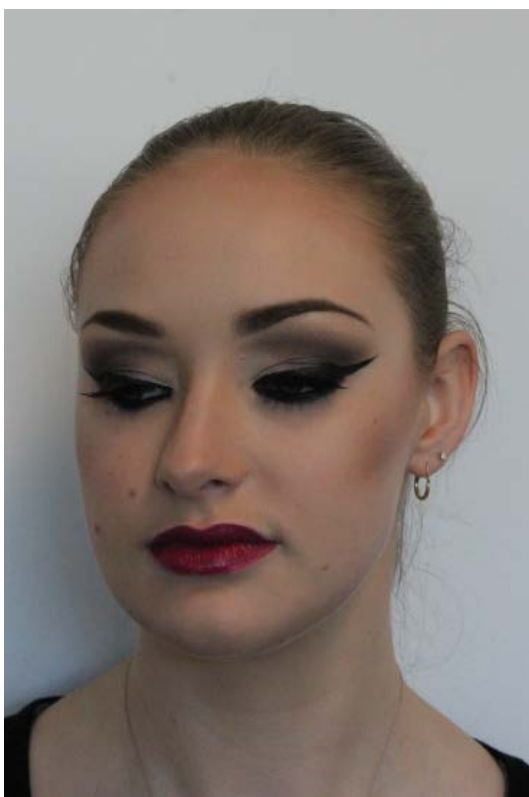
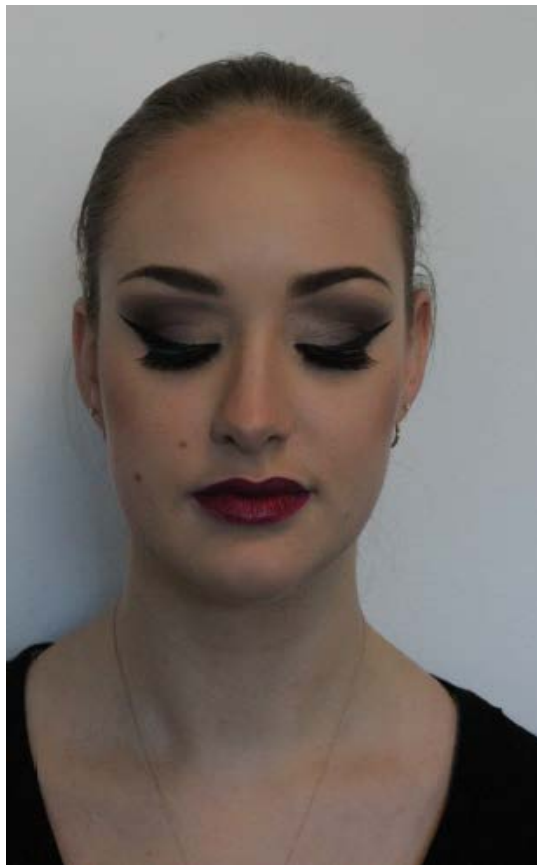
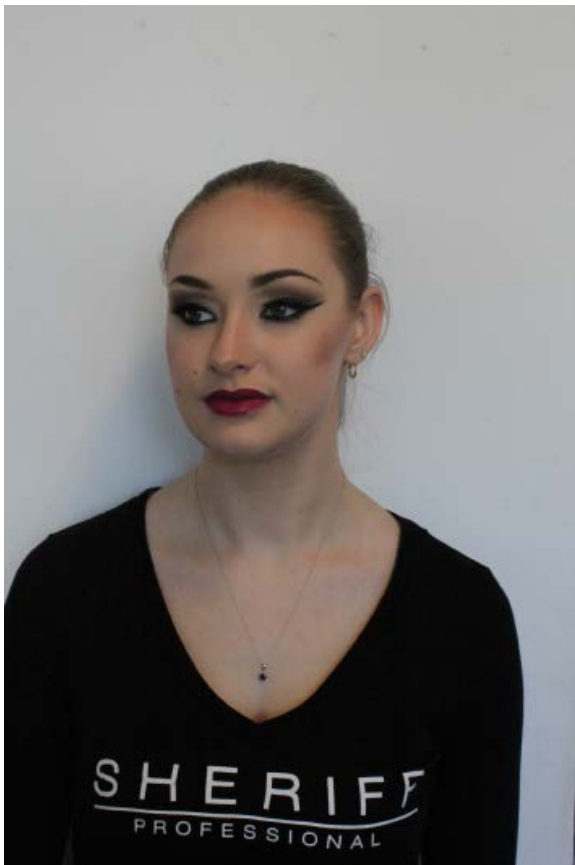


Step 20 – Apply primetime eye and lip primer onto the lips. Line the lips with Raisin lip liner and fill in. Lastly, go over with 527 Diva lipstick.



527 Diva Lipstick





[www.sheriffcosmetics.com](http://www.sheriffcosmetics.com)